

MILL RUN AT PARSIPPANY

Harry and Judy Drive, Morris Plains NJ 07950 (973) 665-6308



Mill Run at ParsIPPany is located in the Morris County Township of Morris Plains, part of the ParsIPPany-Troy Hills School District. The 80 residence community boasts one and two bedroom rental homes that range in size from 750 to 1,320 square feet. The kitchen is complete with a dishwasher, microwave, gas range/oven and a refrigerator. Each apartment home features ceramic flooring in the foyer and kitchen, plush wall-to-wall carpeting through-out the bedrooms and living areas, color-coordinated ceramic tile baths, individually controlled heat and central air. Most residences also offer private balconies. Onsite recreational amenities include a meeting room and state of the art laundry facilities.

www.MillRunNJ.com (973) 665-6308



WE ARE AN EQUAL HOUSING OPPORTUNITY PROVIDER. WE DO NOT DISCRIMINATE ON THE BASIS OF RACE, COLOR, SEX, NATIONAL ORIGIN, RELIGION, HANDICAP OR FAMILIAL STATUS.

WF-MillRun110416



Mill Run at Parsippany

Bedrooms	Plan	Baths	Area	Pricing
1	Plan 1A	1	1000 sq. ft.	\$1610 - \$1660
1	Plan 1B	1	860 sq. ft.	\$1610 - \$1660
1	Plan 2A	1	750 sq. ft.	\$1610 - \$1660
1	Plan 2B	1	850 sq. ft.	\$1660
1	Plan 2C	1	998 sq. ft.	\$1660
1	Plan 1D	1	970 sq. ft.	\$1660
1	Plan 1C	1	1142 sq. ft.	\$1760
2	Plan 1F	2	1214 sq. ft.	\$2025
2	Plan 1E	2	1320 sq. ft.	\$2060
2	Plan 2E	2	1105 sq. ft.	\$2060
2	Plan 2F	2	1090 sq. ft.	\$2060

Rent includes: Water and Sewer. *All prices are subject to change.

Apartment Amenities

- Energy Efficient Boiler
- Plush Wall-to-Wall Carpet
- Walk-In Closet in Select Units
- Energy Star Construction
- Private Patio or Balcony
- Multiple Elevators per Building
- Resident Controlled Central Air & Heat

Community Amenities

- 24-hour Emergency Maintenance
- Meeting Room
- Verizon FIOS Available
- Cable Ready
- Natural Gas
- Laundry Facilities
- Security Lighting

Appliances

- Dishwasher
- Refrigerator/Freezer
- Microwave
- Oven/Range

Visit our website - www.MillRunNJ.com

Rental Office Hours

Monday	Tuesday	Wednesday	Thursday	Friday	Saturday	Sunday
11:00 - 4:30	11:00 - 4:30	11:00 - 4:30	Closed	11:00 - 4:30	11:00 - 4:30	Closed

When you decide to join us, please provide us the following at time of application:

- Two Personal Checks or Money Orders. We do not accept cash:
 1. Non-refundable Application processing Fee payable to GARDEN HOMES. \$50 for 1st Applicant; \$25 for each additional Applicant.
 2. \$200 check payable to 2889 ROUTE 10 LLC. To be applied to your Security Deposit upon approval; or refunded if your application is declined.
- Two Current Pay Stubs
- Valid Photo ID
- Social Security Card

We are an equal opportunity provider. We do not discriminate on the basis of race, color, sex, national origin, religion, handicap or familial status.

2889 Route 10, Morris Plains, NJ 07950
P: (973) 665-6308 F: (973) 845-4127

7/19/2019



www.MillRunNJ.com
MillRun.Rental@GardenCommunities.com

Mill Run at Parsippany - Data Sheet

One Bedroom Floor Plan

Model 1A

with 1 Bath, 1000 sq. ft.



One Bedroom Floor Plan

Model 1D

with 1 Bath, 970 sq. ft.



One Bedroom Floor Plan

Model 1B

with 1 Bath, 860 sq. ft.



Two Bedroom Floor Plan

Model 1E

with 2 Baths, FGFI sq. ft.



One Bedroom Floor Plan

Model 1C

with 1 Bath, 1142 sq. ft.



Two Bedroom Floor Plan

Model 1F

with 2 Baths, 1320 sq. ft.



All dimensions, positions, locations and details are approximate.

All rent prices and community information subject to change.

2110 Gates Court, Morris Plains, NJ 07950

P: 973.665.6308

F: 973.845.4127



www.MillRunNJ.com

MillRun.Rental@GardenCommunities.com

Mill Run at Parsippany - Data Sheet

One Bedroom Floor Plan

Model 2A

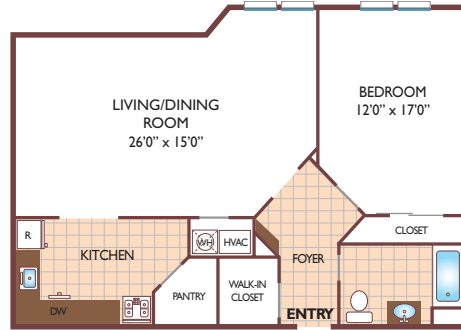
with 1 Bath, 750 sq. ft.



One Bedroom Floor Plan

Model 2Ô

with 1 Bath, 998 sq. ft.



One Bedroom Floor Plan

Model 2B

with 1 Bath, 850 sq. ft.



Two Bedroom Floor Plan

Model 2E

with 2 Baths, 1105 sq. ft.



Two Bedroom Floor Plan

Model 2F

with 2 Baths, 1090 sq. ft.



All dimensions, positions, locations and details are approximate.

All rent prices and community information subject to change.

Mill Run at Parsippany - Data Sheet



All dimensions, positions, locations and details are approximate.

All rent prices and community information subject to change.