

VAIL MANOR

186 Vail Road, Parsippany, NJ 07054 (973) 665-6312



Vail Manor is an age 55+ adult community of 130 rental units in the Morris County Township of Parsippany, N.J. Each residence boasts contemporary kitchens with dishwasher, refrigerator, oven and microwave, carpeting throughout, jet tub and central air conditioning. Apartments are available with either one or two bedrooms and range from 437 to 1,300 square feet of space. Vail Manor is also making upgrades to "Go Green". Vail Manor is conveniently located near public transportation. We offer onsite laundry facilities and 24-hour emergency maintenance.

www.VailManorNJ.com (973) 665-6312



WE ARE AN EQUAL HOUSING OPPORTUNITY PROVIDER. WE DO NOT DISCRIMINATE ON THE BASIS OF RACE, COLOR, SEX, NATIONAL ORIGIN, RELIGION, HANDICAP OR FAMILIAL STATUS.

WF-VailManor110416



Vail Manor -55+ Active Adult Community

| Bedrooms | Plan | Baths | Area | Pricing |
|----------|-------|-------|--------------|-----------------|
| 1 | V1S | 1 | 440 sq. ft. | \$1150 - \$1185 |
| 1 | V1L | 1 | 510 sq. ft. | \$1285 |
| 2 | V2B | 1 | 850 sq. ft. | \$1500 |
| 2 | V2B2b | 2 | 1005 sq. ft. | \$1575 |

*All prices are subject to change.

Apartment Amenities

- Jet Tub
- Plush Wall-to-Wall Carpet
- Resident Controlled Central Air & Heat

Community Amenities

- 24-hour Emergency Maintenance
- Cable Ready
- Laundry Facilities
- Natural Gas
- Public Transit Nearby
- Security Lighting

Appliances

- Dishwasher
- Microwave
- Oven/Range
- Refrigerator/Freezer

Visit our website - www.VailManorNJ.com

Rental Office Hours

| Monday | Tuesday | Wednesday | Thursday | Friday | Saturday | Sunday |
|--------|---------|-----------|----------|--------|----------|--------|
| 11-5 | 11-5 | 11-5 | 11-5 | 11-5 | 11-5 | 11-5 |

When you decide to join us, please provide us the following at time of application:

- Two Personal Checks or Money Orders. We do not accept cash:
 1. Non-refundable Application processing Fee payable to GARDEN HOMES. \$50 for 1st Applicant; \$25 for each additional Applicant.
 2. \$200 check payable to VAIL MANOR DEVELOPERS LLC. To be applied to your Security Deposit upon approval; or refunded if your application is declined.
- Two Current Pay Stubs
- Valid Photo ID
- Social Security Card

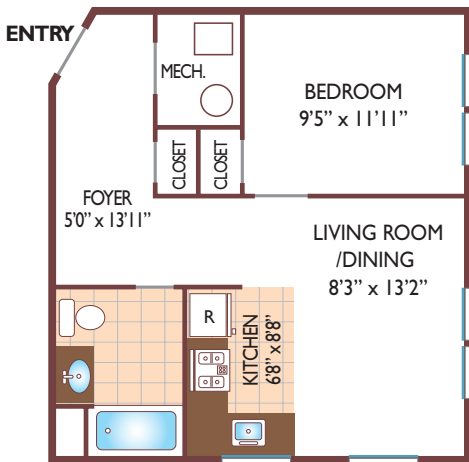
We are an equal opportunity provider. We do not discriminate on the basis of race, color, sex, national origin, religion, handicap or familial status.



Vail Manor

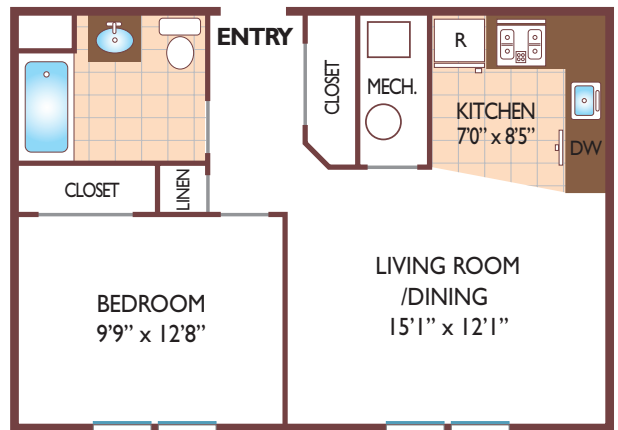
One Bedroom Floor Plan

Standard
with 1 Bath, 440 sq. ft.



One Bedroom Floor Plan

Deluxe
with 1 Bath, 510 sq. ft.



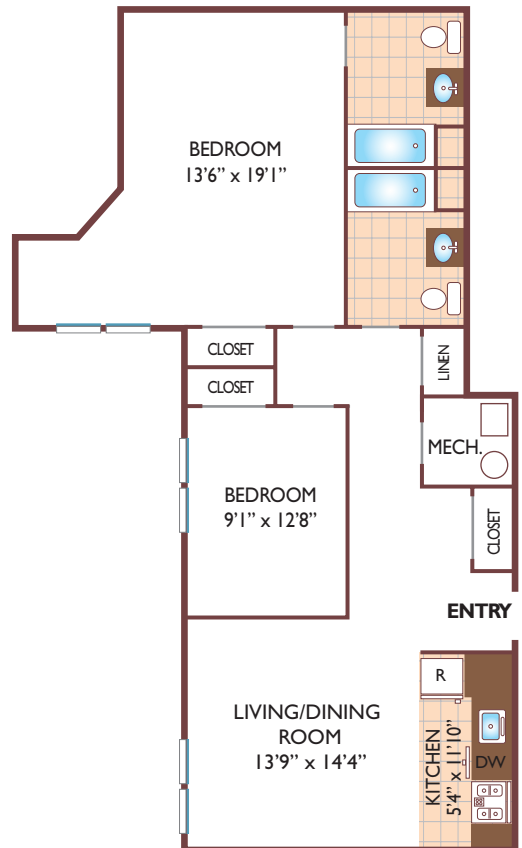
Two Bedroom Floor Plan

Standard
with 1 Bath, 850 sq. ft.



Two Bedroom Floor Plan

Luxury
with 2 Bath, 1005 sq. ft.



All dimensions, positions, locations and details are approximate.

All rent prices and community information subject to change.

