

# FLORAL GARDENS

835 Mountain Avenue, Springfield, NJ 07081 (973) 821-7627



Located in Union County's Springfield Township is Floral Gardens, a collection of just 29 two-bedroom rental units. Each newly renovated residence features eat-in kitchens with dishwashers, refrigerators, ovens, hardwood floors throughout and an air conditioner. These spacious apartments range in size from 1,050 to 1,305 square feet. The community also boasts an onsite laundry facility and 24-hour emergency maintenance.

[www.FloralGardensNJ.com](http://www.FloralGardensNJ.com) (973) 821-7627



WE ARE AN EQUAL HOUSING OPPORTUNITY PROVIDER. WE DO NOT DISCRIMINATE ON THE BASIS OF RACE, COLOR, SEX, NATIONAL ORIGIN, RELIGION, HANDICAP OR FAMILIAL STATUS.

WF-FloralGard032017



# Floral Gardens

Bedrooms	Plan	Baths	Area	Pricing
2	Two Bedroom	1	1050 sq. ft.	\$1875
2	Two Bedroom - Deluxe	1	1305 sq. ft.	\$1975

Rent includes: Heat and Hot Water \*All prices are subject to change.

## Apartment Amenities

- Air Conditioning
- New / Renovated Interiors
- Eat-In Kitchen
- Hardwood Floors

## Community Amenities

- 24-hour Emergency Maintenance
- Natural Gas
- Cable Ready
- Security Lighting
- Laundry Facilities
- Verizon FIOS Available

## Appliances

- Dishwasher
- Refrigerator/Freezer
- Oven/Range
- Range Hood

Visit our website - [www.FloralGardensNJ.com](http://www.FloralGardensNJ.com)

## Rental Office Hours

Monday	Tuesday	Wednesday	Thursday	Friday	Saturday	Sunday
9-4:30	9-4:30	9-4:30	9-4:30	9-4:30	10-4	Closed

When you decide to join us, please provide us the following at time of application:

- Two Personal Checks or Money Orders. We do not accept cash:
  1. Non-refundable Application processing Fee payable to GARDEN HOMES. \$50 for 1st Applicant; \$25 for each additional Applicant.
  2. \$200 check payable to FLORAL APARTMENTS To be applied to your Security Deposit upon approval; or refunded if your application is declined.
- Two Current Pay Stubs
- Valid Photo ID
- Social Security Card

## Serviced By Mountainview Gardens Leasing Office

99 Hillside Avenue  
Springfield, NJ 07081

We are an equal opportunity provider. We do not discriminate on the basis of race, color, sex, national origin, religion, handicap or familial status.

835 Mountain Avenue, Springfield, NJ 07081  
P: (973) 821-7627 F: (973) 261-5144

1/23/2019



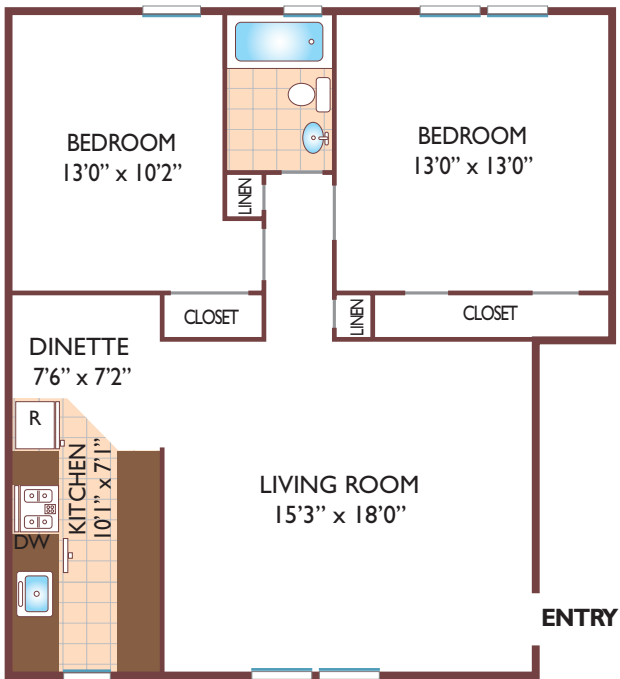
[www.FloralGardensNJ.com](http://www.FloralGardensNJ.com)  
[FloralGardens.Rental@GardenCommunities.com](mailto:FloralGardens.Rental@GardenCommunities.com)

# Floral Gardens

## Two Bedroom Floor Plan

Standard

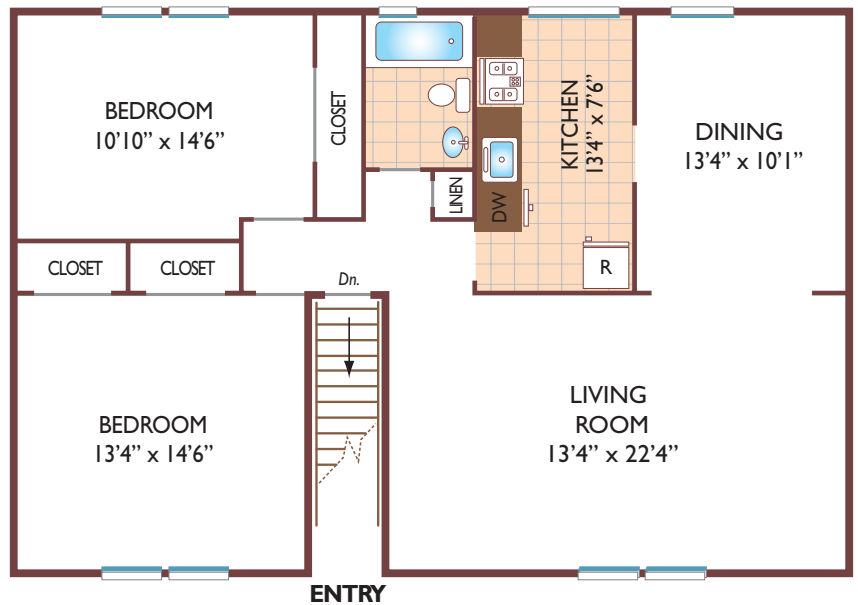
Lower, with 1 Bath, 1050 sq. ft.



## Two Bedroom Floor Plan

Deluxe - with Dining Room

Upper, with 1 Bath, 1305 sq. ft.



All dimensions, positions, locations and details are approximate.

All rent prices and community information subject to change.