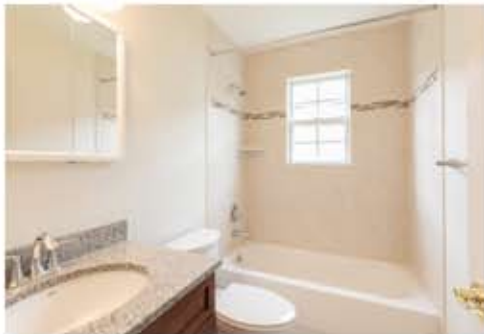


LAMBERTS MILL VILLAGE

333 Spruce Mill Lane, Scotch Plains, NJ 07076 (908) 543-4543



Lamberts Mill Village is a collection of 332 apartment residences rising in the Union County township of Scotch Plains. Units are available with one, two or three bedrooms and range in size from 935 to 1,685 square feet. Each spacious home boasts a number of sought after appointments including kitchens with refrigerators and ovens, carpeting and hardwood flooring, central air, washer and dryer and patio or balcony (per plan). Select apartments are available that feature a new kitchen with Granite counter-tops & ceramic tile flooring, ceramic tile entry, new bathroom, and two tone decorator paint colors. Residents also enjoy the convenience of having an onsite swimming pool.

www.LambertsMillVillageNJ.com (908) 543-4543



WE ARE AN EQUAL HOUSING OPPORTUNITY PROVIDER. WE DO NOT DISCRIMINATE ON THE BASIS OF RACE, COLOR, SEX, NATIONAL ORIGIN, RELIGION, HANDICAP OR FAMILIAL STATUS.

WF-LambertMill062916



Lamberts Mill Village

| Bedrooms | Plan | Baths | Area | Pricing |
|----------|--------------------|-------|--------------------|-----------------|
| 1 | 1 Bedroom | 1 | 935 -1675 sq. ft. | \$1630 - \$1825 |
| 2 | 2 Bedroom Townhome | 1.5 | 1100 -1540 sq. ft. | \$2060 - \$2220 |
| 3 | 3 Bedroom Townhome | 2.5 | 1685 -2250 sq. ft. | \$2155 - \$2370 |

*All prices are subject to change.

Apartment Amenities

- Hardwood Floors
- Private Patio or Balcony
- Resident Controlled Central Air & Heat

Community Amenities

- 24-hour Emergency Maintenance
- Natural Gas
- Swimming Pool
- Verizon FIOS Available
- Cable Ready
- Playground
- Tennis Court
- Easy Access To NYC Transportation
- Security Lighting
- Top Rated Scotch Plains Public School System

Appliances

- Dishwasher
- Refrigerator/Freezer
- Oven/Range
- Washer & Dryer in Apartment
- Range Hood

Visit our website - www.LambertsMillVillageNJ.com

Rental Office Hours

| Monday | Tuesday | Wednesday | Thursday | Friday | Saturday | Sunday |
|--------|---------|-----------|----------|--------|----------|--------|
| 10-5 | Closed | Closed | 10-5 | 10-5 | 10-5 | 10-5 |

When you decide to join us, please provide us the following at time of application:

- Two Personal Checks or Money Orders. We do not accept cash:
 1. Non-refundable Application processing Fee payable to GARDEN HOMES. \$50 for 1st Applicant; \$25 for each additional Applicant.
 2. \$200 check payable to LAMBERTS MILL VILLAGE ASSOCIATES. To be applied to your Security Deposit upon approval; or refunded if your application is declined.
- Two Current Pay Stubs
- Valid Photo ID
- Social Security Card

We are an equal opportunity provider. We do not discriminate on the basis of race, color, sex, national origin, religion, handicap or familial status.



Lamberts Mill Village

One Bedroom Floor Plan

Lower, with 1 Bath, 935 sq. ft.



Two Bedroom Floor Plan

TownHome with 1.5 Baths, 1100 sq. ft.



Three Bedroom Floor Plan

TownHome with 2.5 Baths, 1685 sq. ft.



All dimensions, positions, locations and details are approximate.

All rent prices and community information subject to change.

