

RIVERFRONT AT CRANFORD STATION

105 Chestnut Street, Cranford, NJ 07016 (908) 842-0805



Riverfront at Cranford Station brings a new dimension to luxury residential rental living. Offering spacious one and two bedroom floor plans ranging in 950 -1650 square feet. Riverfront is a commuter-friendly community with the Cranford Station on Raritan Train Line directly across the street. Each spacious apartment home includes assigned parking, a gourmet kitchen with Stainless Steel GE appliances, Granite Countertops, dining room and living room with a Juliet Balcony or Patio. The Master Suite includes extensive walk-in closet, sumptuous bath with double sink, separate shower and large soaking tub (per plan). Our residents also enjoy a state of the art fitness center and clubroom.

www.RiverfrontNJ.com (908) 842-0805



WE ARE AN EQUAL HOUSING OPPORTUNITY PROVIDER. WE DO NOT DISCRIMINATE ON THE BASIS OF RACE, COLOR, SEX, NATIONAL ORIGIN, RELIGION, HANDICAP OR FAMILIAL STATUS.

WF-Riverfront032017



Riverfront At Cranford Station

Bedrooms	Plan	Baths	Area	Pricing
1	1A	1	950 sq. ft.	\$2500
2	2A	2	1380 sq. ft.	\$3010 - \$3230
2	2B	2	1385 sq. ft.	\$3230
2	2C	2	1350 sq. ft.	\$3230
2	2D	2	1650 sq. ft.	\$3700 - \$3830

*All prices are subject to change.

Apartment Amenities

- Eat-In Kitchen
- Living Room with Private Balcony/Patio
- Resident Controlled Central Air & Heat
- Generous Closet Space
- Multiple Elevators per Building
- Hardwood Floors
- New / Renovated Interiors

Community Amenities

- Covered Parking
- Landscaped Amenity Deck
- Easy Access To NYC Transportation
- Playground
- Jogging Path / Walking Trail

Stainless Steel Appliances

- Disposal
- Refrigerator/Freezer
- Microwave
- Range Hood

Visit our website - www.RiverfrontNJ.com

Rental Office Hours

Monday	Tuesday	Wednesday	Thursday	Friday	Saturday	Sunday
10-5	10-5	10-5	10-5	10-5	10-5	Closed

When you decide to join us, please provide us the following at time of application:

- Two Personal Checks or Money Orders. We do not accept cash:
 1. Non-refundable Application processing Fee payable to GARDEN HOMES. \$50 for 1st Applicant; \$25 for each additional Applicant.
 2. \$500 check payable to RIVERFRONT DEVELOPERS, LLC. To be applied to your Security Deposit upon approval; or refunded if your application is declined.
- Two Current Pay Stubs
- Valid Photo ID
- Social Security Card

We are an equal opportunity provider. We do not discriminate on the basis of race, color, sex, national origin, religion, handicap or familial status.

105 Chestnut Street , Cranford, NJ 07016
P: (908) 842-0805 F: (908) 272-3099

2/17/2018



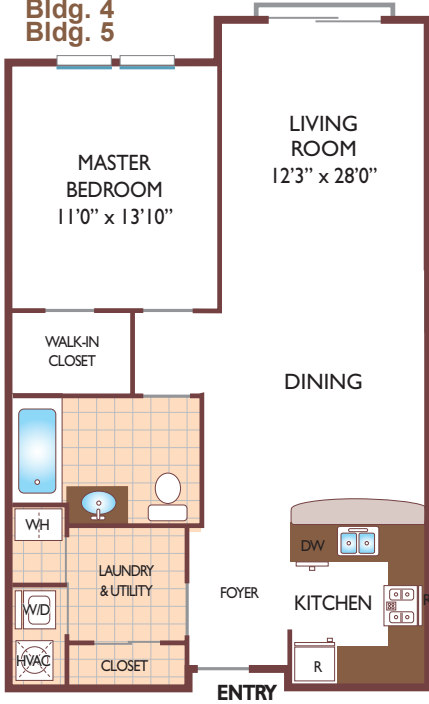
www.RiverfrontNJ.com
Riverfront.Rental@GardenCommunities.com

Riverfront at Cranford Station

One Bedroom Floor Plan

with 1 Bath, 950 sq. ft.

Plan 1A
Bldg. 4
Bldg. 5



Two Bedroom Floor Plan

with 2 Baths, 1380 sq. ft.

Plan 2A
Bldg. 4
Bldg. 5



Two Bedroom Floor Plan

with 2 Bath, 1385 sq. ft.

Plan 2B
Bldg. 4
Bldg. 5



All dimensions, positions, locations and details are approximate.

All rent prices and community information subject to change.



Riverfront at Cranford Station

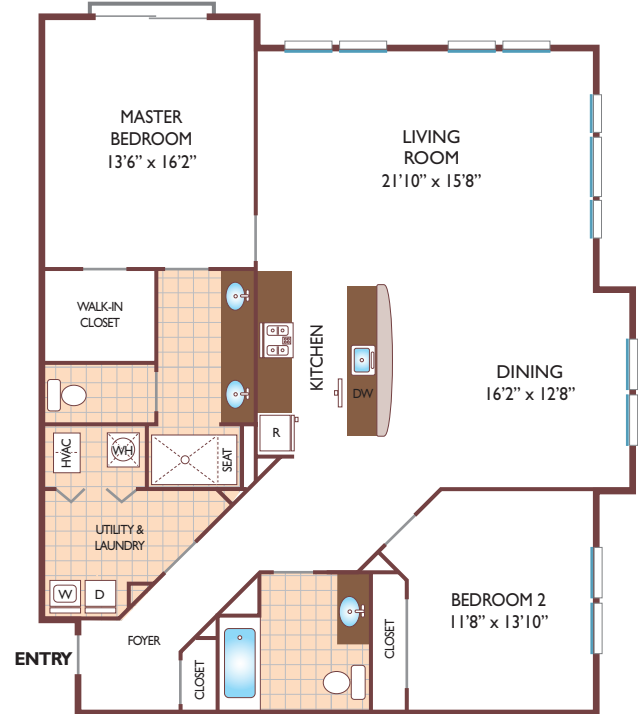
Two Bedroom Floor Plan
with 2 Bath, 1350 sq. ft.

Plan 2C
Bldg. 5



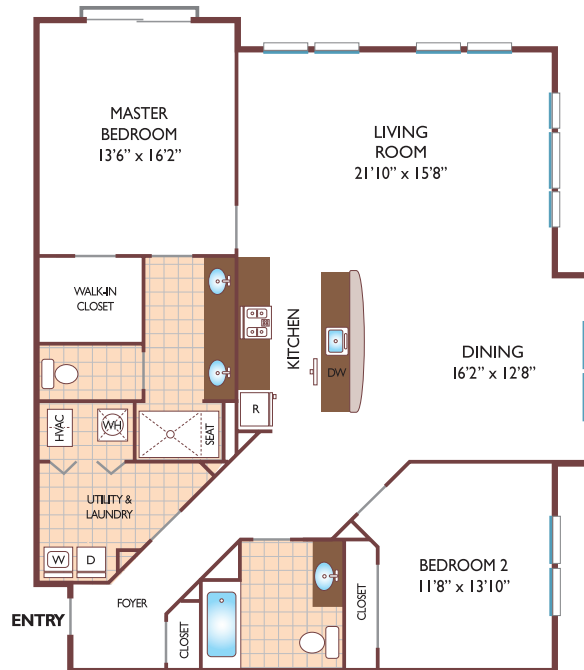
Two Bedroom Floor Plan
with 2 Baths, 1650 sq. ft.

Plan 2D
Bldg. 5



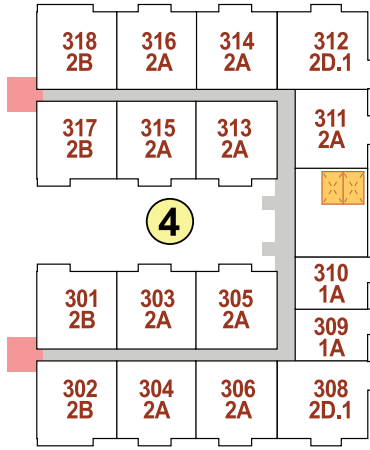
Two Bedroom Floor Plan
with 2 Baths, 1650 sq. ft.

Plan 2D.1
Bldg. 4

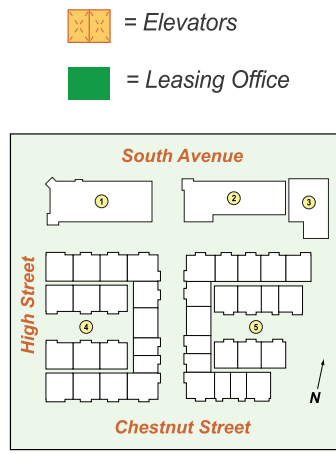


All dimensions, positions, locations and details are approximate.
All rent prices and community information subject to change.

Riverfront at Cranford Station

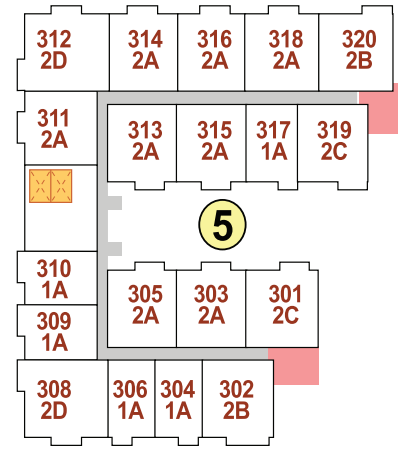


Third Floor

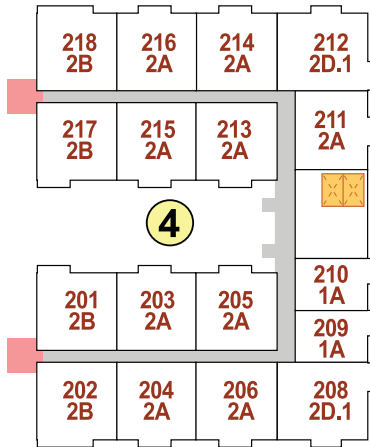


= Elevators

= Leasing Office



Third Floor



Second Floor

Elevator Areas for Bldg. 4

1st Floor -- Resident's Lounge, Trash Disposal, Restroom

2nd Floor -- Fitness Center, Trash Disposal, Restroom

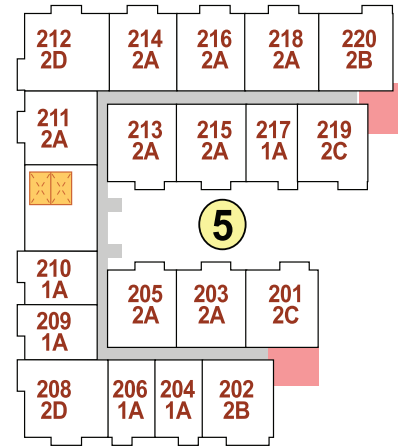
3rd Floor -- Community Room, Trash Disposal, Restroom

Elevator Areas for Bldg. 5

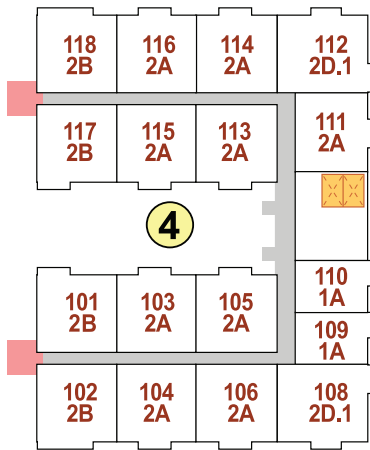
1st Floor -- Resident's Lounge, Leasing Office, Trash Disposal, Restroom

2nd Floor -- Fitness Center, Trash Disposal, Restroom

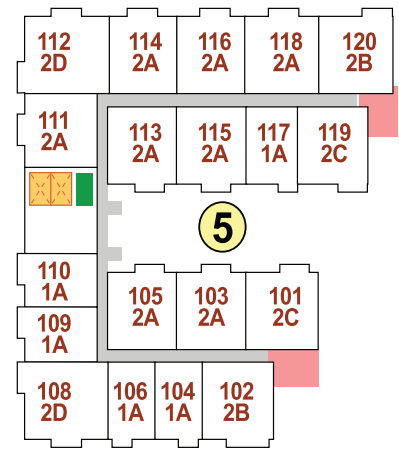
3rd Floor -- Community Room, Trash Disposal, Restroom



Second Floor



First Floor



First Floor

