

SKYLINE RIDGE

100 Wilson Road, Springfield, NJ 07081 (973) 821-7667



Skyline Ridge is a collection of 93 residences perched on a hillside site that overlooks the ever changing Manhattan skyline in the town of Springfield, N.J. The luxury rental community features six housing layouts. Each spacious two bedroom unit includes a gourmet kitchen with GE appliances, Caesar Stone counter tops, living and dining room (per plan), master suite with walk-in closet, sumptuous bath with Jacuzzi tub and separate shower, private balcony and secure indoor parking with keyed storage space. Residents at Skyline Ridge also enjoy recreational amenities and services, including a state-of-the art fitness center, Club Room and the convenience of a 24-hour concierge service.

www.SkylineRidgeNJ.com (973) 821-7667



WE ARE AN EQUAL HOUSING OPPORTUNITY PROVIDER. WE DO NOT DISCRIMINATE ON THE BASIS OF RACE, COLOR, SEX, NATIONAL ORIGIN, RELIGION, HANDICAP OR FAMILIAL STATUS.

WF-Skyline032017



Skyline Ridge

Bedrooms	Plan	Baths	Area	Pricing
2	Plan F	2.5	1440 sq. ft.	\$3050 - \$3350
2	Plan D	2.5	1440 sq. ft.	\$3100 - \$3250
2	Plan A	2.5	1536 sq. ft.	\$3250 - \$3850
2	Plan B	2.5	1799 sq. ft.	\$4325 - \$4750
2	Plan C	2.5	1936 sq. ft.	\$4750 - \$5700
2	Plan E	2.5	1890 sq. ft.	\$5250

*All prices are subject to change.

Apartment Amenities

- Breakfast Bar
- Hardwood Floors
- Multiple Elevators per Building
- Private Patio or Balcony
- Eat-In Kitchen
- Jet Tub
- New / Renovated Interiors
- Walk-In Closet in Select Units
- Garages Available
- Kitchen Island
- Plush Wall-to-Wall Carpet
- Wet Bar

Community Amenities

- 24 -hour Concierge
- Clubhouse
- Security Lighting
- 24-hour Emergency Maintenance
- Jogging Path / Walking Trail
- Verizon FIOS Available
- Cable Ready
- Laundry Facilities

Stainless Steel Appliances

- Cook Top
- Oven/Range
- Water Filter
- Dishwasher
- Range Hood
- Microwave
- Refrigerator/Freezer

Visit our website - www.SkylineRidgeNJ.com

Rental Office Hours

Monday	Tuesday	Wednesday	Thursday	Friday	Saturday	Sunday
9-5	9-5	9-5	9-5	9-5	9-5	9-5

When you decide to join us, please provide us the following at time of application:

- Two Personal Checks or Money Orders. We do not accept cash:
 1. Non-refundable Application processing Fee payable to GARDEN HOMES. \$50 for 1st Applicant; \$25 for each additional Applicant.
 2. \$500 check payable to SKYLINE RIDGE DEVELOPERS LLC. To be applied to your Security Deposit upon approval; or refunded if your application is declined.
- Two Current Pay Stubs
- Valid Photo ID
- Social Security Card

We are an equal opportunity provider. We do not discriminate on the basis of race, color, sex, national origin, religion, handicap or familial status.

100 Wilson Road, Springfield, NJ 07081
P: (973) 821-7667 F: (973) 564-8545

7/19/2018



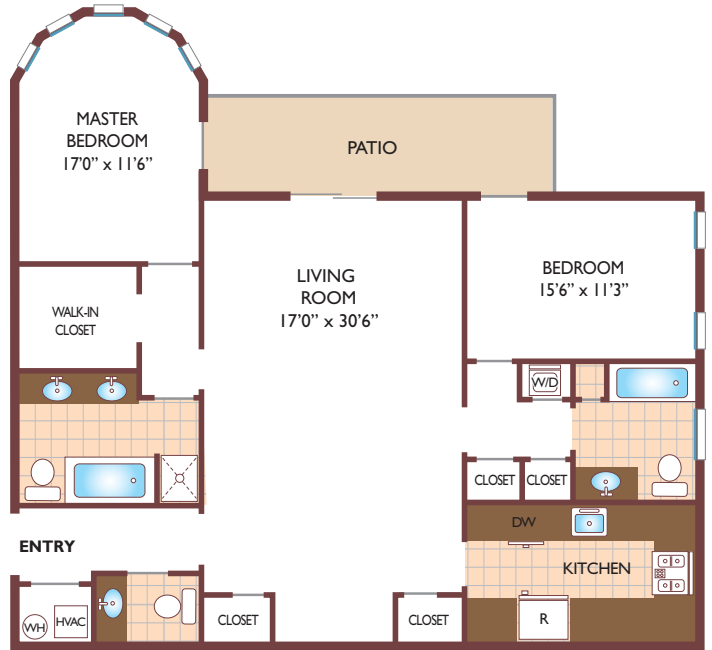
www.SkylineRidgeNJ.com
SkylineRidge.Rental@GardenCommunities.com

Skyline Ridge

Two Bedroom Floor Plan A
with 2 & 1/2 Baths, 1536 sq. ft.



Two Bedroom Floor Plan B
with 2 & 1/2 Baths, 1795 sq. ft.



Two Bedroom Floor Plan C
with 2 & 1/2 Baths, 1925 sq. ft.



All dimensions, positions, locations and details are approximate.
All rent prices and community information subject to change.

