

# BUCKINGHAM TERRACE

280 Clark Street, Hackensack, NJ 07601 (201) 771 - 0785



Welcome to Buckingham Terrace, a pet free community, that is a commuters dream located in Hackensack, New Jersey. In addition to our well-appointed interiors, we are just minutes from New York City. A wide variety of entertainment and shopping can be enjoyed with Garden State Plaza and the Shops at Riverside close by. Buckingham Terrace is conveniently located close to public transportation as well as the Garden State Parkway, New Jersey Turnpike, and Routes 17 and 80. Make your appointment to tour your new home today!

[www.BuckinghamTerraceNJ.com](http://www.BuckinghamTerraceNJ.com) (201) 771 - 0785



WE ARE AN EQUAL HOUSING OPPORTUNITY PROVIDER. WE DO NOT DISCRIMINATE ON THE BASIS OF RACE, COLOR, SEX, NATIONAL ORIGIN, RELIGION, HANDICAP OR FAMILIAL STATUS.

WF-Buckingham052516



# Buckingham Terrace

Bedrooms	Plan	Baths	Area	Pricing
1	Deluxe	1	780 sq. ft.	\$1640
1	Superior	1	1020 sq. ft.	\$1790
2	Luxury	1.5	1250 sq. ft.	\$2065

\*All prices are subject to change.

## Apartment Amenities

- Air Conditioning
- Plush Wall-to-Wall Carpet
- Private Patio or Balcony

## Community Amenities

- 24-hour Emergency Maintenance
- Cable Ready
- Easy Access To NYC Transportation
- Laundry Facilities
- Public Transit Nearby
- Reserved Parking
- Security Lighting
- Verizon FIOS Available

## Appliances

- Dishwasher
- Microwave
- Oven/Range
- Refrigerator/Freezer

Visit our website - [www.BuckinghamTerraceNJ.com](http://www.BuckinghamTerraceNJ.com)

## Rental Office Hours

Monday	Tuesday	Wednesday	Thursday	Friday	Saturday	Sunday
10-3	10-2	10-3	10-3	10-2	10-2	by appt.

When you decide to join us, please provide us the following at time of application:

- Two Personal Checks or Money Orders. We do not accept cash:
  1. Non-refundable Application processing Fee payable to GARDEN HOMES. \$50 for 1st Applicant; \$25 for each additional Applicant.
  2. \$200 check payable to HACKENSACK DEVELOPERS, LLC. To be applied to your Security Deposit upon approval; or refunded if your application is declined.
- Two Current Pay Stubs
- Valid Photo ID
- Social Security Card

### Serviced by Fair Lawn Commons Leasing Office

1 Croucher Lane  
Fairlawn, NJ 07410

We are an equal opportunity provider. We do not discriminate on the basis of race, color, sex, national origin, religion, handicap or familial status.

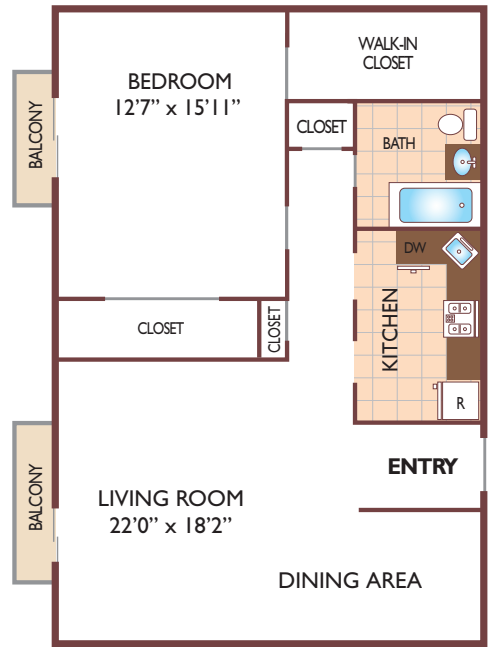


# Buckingham Terrace

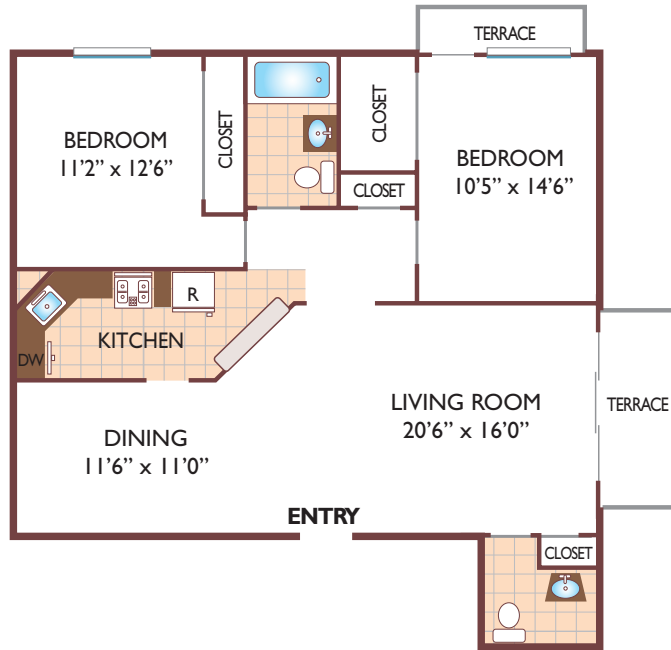
**One Bedroom Floor Plan**  
Deluxe Unit  
with 1 Bath, 760 sq. ft.



**One Bedroom Floor Plan**  
Superior Unit  
with 1 Bath, 1020 sq. ft.



**Two Bedroom Floor Plan**  
Luxury Unit  
with 1 and 1/2 Bath, 1250 sq. ft.



All dimensions, positions, locations and details are approximate.  
All rent prices and community information subject to change.

