

# THE COMMONS

2 Silver Beech Court, Upper Saddle River, NJ (201) 995-6900



This Pet Free community located in the Bergen County town of Upper Saddle River, features 154 two-bedroom residences. Each spacious unit boasts generous closet space, wall-to-wall carpeting, private balcony or patio (per plan), modern kitchen with General Electric space-saver microwave, refrigerator, built-in dishwasher, gas range and washer and dryer, as well as a number of high-end mechanical and technological features. Apartments range in size from 1200 to 2000 square feet. Newly renovated apartments are available with renovated kitchens featuring stainless steel appliances, granite countertops, upgraded fixtures and much more!

[www.TheCommonsAtUSRNJ.com](http://www.TheCommonsAtUSRNJ.com) (201) 995-6900



WE ARE AN EQUAL HOUSING OPPORTUNITY PROVIDER. WE DO NOT DISCRIMINATE ON THE BASIS OF RACE, COLOR, SEX, NATIONAL ORIGIN, RELIGION, HANDICAP OR FAMILIAL STATUS.

WF-TheCommonsUSR051616



# The Commons

Bedrooms	Plan	Baths	Area	Pricing
2	The Gibraltar	2	1200 - 1800 sq. ft.	\$2470 - \$2770
2	The Essex	2	1400 - 2000 sq. ft.	\$2570 - \$2870
2	The Fairfax	2	1400 - 2000 sq. ft.	\$2570 - \$2870

\*All prices are subject to change.

## Apartment Amenities

- Finished Basements (select units)
- New / Renovated Interiors
- Spacious Floor Plans
- Generous Closet Space
- Plush Wall-to-Wall Carpet
- Spacious Walk-In Closet
- Large Dining Area
- Private Patio or Balcony
- Washer & Dryer in Apartment

## Community Amenities

- 24-hour Emergency Maintenance
- Lake / Pond
- Security Lighting
- Cable Ready
- Natural Gas
- Verizon FIOS Available
- Jogging Path / Walking Trail
- Public Transit Nearby

## Stainless Steel Appliances

- Dishwasher
- Refrigerator/Freezer
- Microwave
- Oven/Range

Visit our website - [www.TheCommonsatUSRNJ.com](http://www.TheCommonsatUSRNJ.com)

## Rental Office Hours

Monday	Tuesday	Wednesday	Thursday	Friday	Saturday	Sunday
10-5	10-5	10-5	10-5	10-5	10-5	10-5

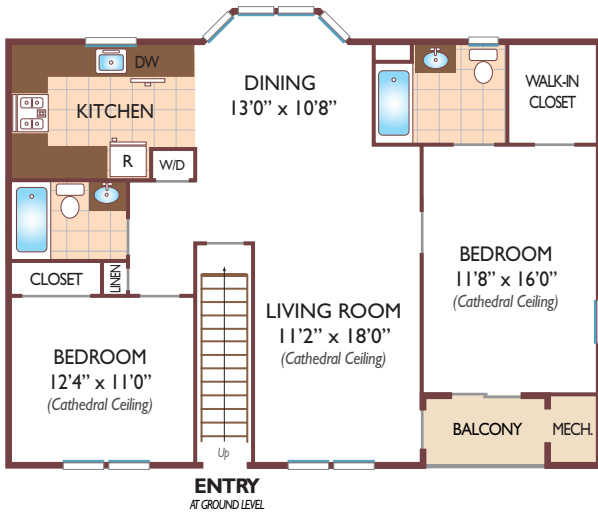
When you decide to join us, please provide us the following at time of application:

- Two Personal Checks or Money Orders. We do not accept cash:
  1. Non-refundable Application processing Fee payable to GARDEN HOMES. \$50 for 1st Applicant; \$25 for each additional Applicant.
  2. \$200 check payable to USR DEVELOPERS, LLC. To be applied to your Security Deposit upon approval; or refunded if your application is declined.
- Two Current Pay Stubs
- Valid Photo ID
- Social Security Card

We are an equal opportunity provider. We do not discriminate on the basis of race, color, sex, national origin, religion, handicap or familial status.



**Two Bedroom Floor Plan**  
The Essex - Second Floor  
with 2 Baths, 1400 sq. ft.



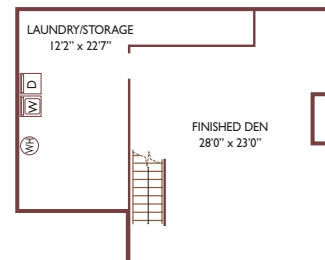
**Two Bedroom Floor Plan**  
The Fairfax - Second Floor  
with 2 Baths, 1400 sq. ft.



**Two Bedroom Floor Plan**  
The Gibraltar - First Floor  
with 2 Baths & Fin.Den, 1800 sq. ft.



First Floor



Basement Plan  
(Shown Reduced)

All dimensions, positions, locations and details are approximate.  
All rent prices and community information subject to change.

