

WOODCREST AT FAIRFIELD

29 Greenbrook Road, Fairfield, NJ 07004 (973) 947-8873



Woodcrest at Fairfield, a 55 + active adult community, in the Essex County Township of Fairfield, N.J. is an exclusive community of just 122 residences featuring a wide variety of interior styles including one and two bedroom layouts. Residences range in size from 880 to 1,425 sq. ft. and include a number of appointments such as a kitchen island, dishwasher, refrigerator, oven, microwave, wall-to-wall carpeting, central air conditioning and balcony. Residents enjoy the resort-inspired lifestyle that stems from the onsite amenities which include a Community Room and fitness center.

www.WoodcrestatFairfieldNJ.com (973) 947-8873



WE ARE AN EQUAL HOUSING OPPORTUNITY PROVIDER. WE DO NOT DISCRIMINATE ON THE BASIS OF RACE, COLOR, SEX, NATIONAL ORIGIN, RELIGION, HANDICAP OR FAMILIAL STATUS.

WF-WoodcrestFairfield120616



Woodcrest At Fairfield

Bedrooms	Plan	Baths	Area	Pricing
1	Birch	1	880 sq. ft.	\$1830
1	Aspen	1	950 sq. ft.	\$1880
2	Elm	2	1240 sq. ft.	\$2275
2	Dogwood	2	1270 sq. ft.	\$2350
2	Cedar	2	1425 sq. ft.	\$2425

*All prices are subject to change.

Apartment Amenities

- Kitchen Island
- Resident Controlled Central Air & Heat
- Plush Wall-to-Wall Carpet
- Underground Assigned Parking
- Private Patio or Balcony
- Washer & Dryer in Apartment

Community Amenities

- 24-hour Emergency Maintenance
- Controlled Access at Building Entry
- Verizon FIOS Available
- Cable Ready
- Public Transit Nearby
- Clubhouse
- Security Lighting

Appliances

- Dishwasher
- Range Hood
- Microwave
- Refrigerator/Freezer
- Oven/Range

Visit our website - www.WoodcrestatFairfieldNJ.com

Rental Office Hours

Monday	Tuesday	Wednesday	Thursday	Friday	Saturday	Sunday
8-4:30	8-4:30	8-4:30	8-4:30	8-4:30	by appt.	by appt.

When you decide to join us, please provide us the following at time of application:

- Two Personal Checks or Money Orders. We do not accept cash:
 1. Non-refundable Application processing Fee payable to GARDEN HOMES. \$50 for 1st Applicant; \$25 for each additional Applicant.
 2. \$200 check payable to FAIRFIELD WOODCREST, LLC. To be applied to your Security Deposit upon approval; or refunded if your application is declined.
- Two Current Pay Stubs
- Valid Photo ID
- Social Security Card

We are an equal opportunity provider. We do not discriminate on the basis of race, color, sex, national origin, religion, handicap or familial status.



Woodcrest at Fairfield

One Bedroom Floor Plan

The Birch
with 1 Bath, 880 sq. ft.



One Bedroom Floor Plan

The Aspen
with 1 Bath, 950 sq. ft.



Two Bedroom Floor Plan

The Elm
with 2 Baths, 1240 sq. ft.



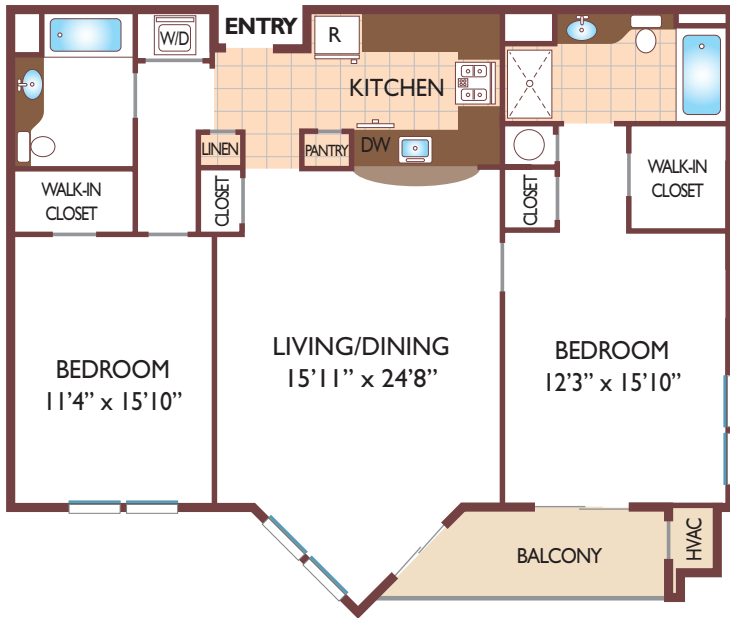
All dimensions, positions, locations and details are approximate.
All rent prices and community information subject to change.



Woodcrest at Fairfield

Two Bedroom Floor Plan

The Dogwood
with 2 Bath, 1270 sq. ft.



Two Bedroom Floor Plan

The Cedar
with 2 Bath, 1425 sq. ft.



All dimensions, positions, locations and details are approximate.

All rent prices and community information subject to change.

