

GREENFIELD GARDENS

50 N. Evergreen Road, Edison, NJ 08837 (732) 898-1299



Greenfield Gardens is an collection of 321 garden-style apartments located in Edison Township in Middlesex County. Greenfield Gardens offers one or two bedrooms ranging in size from 950 to 1150 square feet. Each rental home includes a number of impressive amenities such as upgraded kitchens, hardwood floors, walk-in closets and air conditioning. Onsite amenities include a swimming pool and laundry facility. The community is just a short distance from three area malls; Woodbridge Center Mall, Menlo Park Mall and Middlesex Mall, with easy access to major thoroughfares including the Garden State Parkway, New Jersey Turnpike and Routes 1, 9, 287 and 440 and Metro Park.

www.GreenfieldGardensNJ.com (732) 898-1299



WE ARE AN EQUAL HOUSING OPPORTUNITY PROVIDER. WE DO NOT DISCRIMINATE ON THE BASIS OF RACE, COLOR, SEX, NATIONAL ORIGIN, RELIGION, HANDICAP OR FAMILIAL STATUS.

WF-Greenfield083116



Greenfield Gardens

Bedrooms	Plan	Baths	Area	Pricing
1	One Bedroom	1	920 sq. ft.	\$1280 - \$1305
2	Two Bedroom	1	1150 sq. ft.	\$1575 - \$1600

Rent includes: Heat and Hot Water. YEARLY POOL FEES: Residents -- \$180 / Seniors -- \$78 *All prices are subject to change.

Apartment Amenities

- Air Conditioning
- New / Renovated Interiors
- Eat-In Kitchen
- Walk-In Closet in Select Units
- Hardwood Floors

Community Amenities

- 24-hour Emergency Maintenance
- Laundry Facilities
- Security Lighting
- Cable Ready
- Natural Gas
- Swimming Pool
- Easy Access To NYC Transportation
- Public Transit Nearby

Appliances

- Cook Top
- Wall Oven
- Range Hood
- Refrigerator/Freezer

Visit our website - www.GreenfieldGardensNJ.com

Rental Office Hours

Monday	Tuesday	Wednesday	Thursday	Friday	Saturday	Sunday
10-4	10-4	10-4	10-4	10-4	10-4	Closed

When you decide to join us, please provide us the following at time of application:

- Cash or Money Orders.
 1. Non-refundable Application processing Fee payable to GARDEN HOMES. \$50 for 1st Applicant; \$50 for each additional Applicant. \$100 for Co-Signer
 2. \$200 check payable to GREENFIELD GARDENS. To be applied to your Security Deposit upon approval; or refunded if your application is declined.
- Two Current Pay Stubs
- Valid Photo ID
- Social Security Card

All leases are for one year. Sorry, No Pets, No Babecues, No Waterbeds.

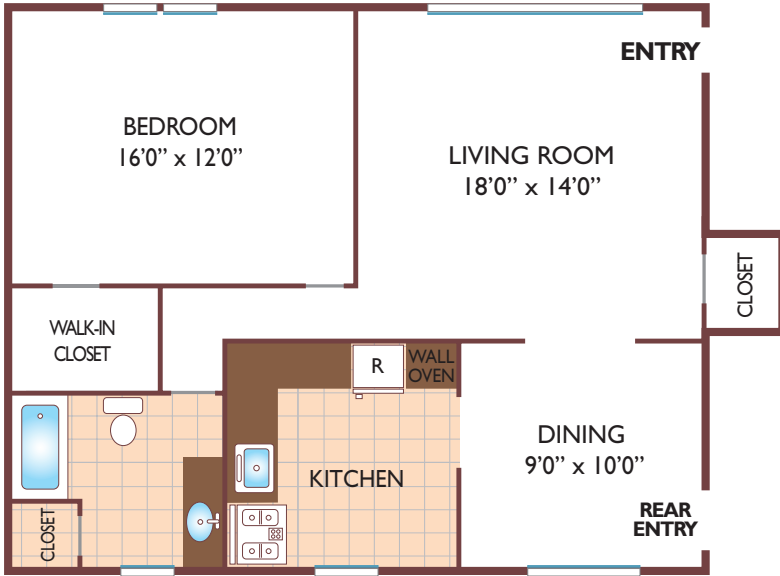
We are an equal opportunity provider. We do not discriminate on the basis of race, color, sex, national origin, religion, handicap or familial status.



Greenfield Gardens

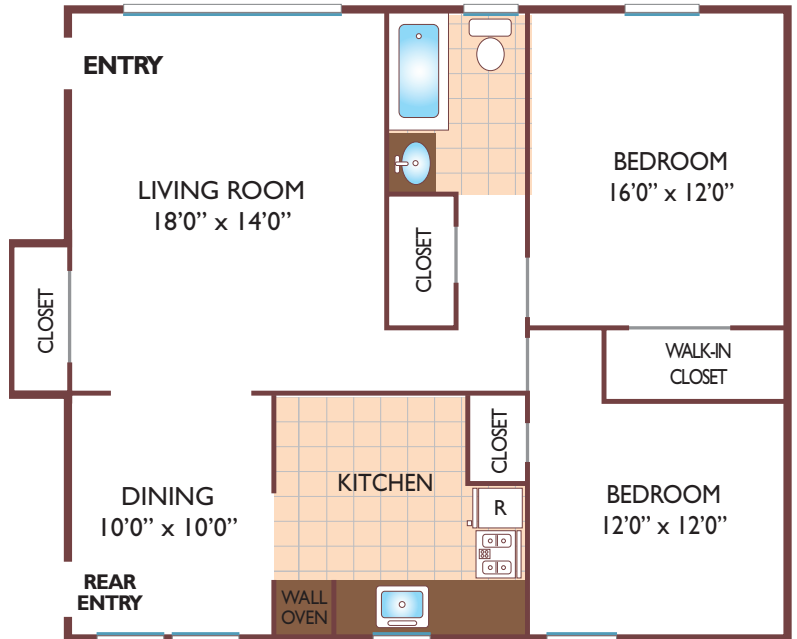
One Bedroom Floor Plan

Ground Level Unit,
with 1 Bath, 920 sq. ft.



Two Bedroom Floor Plan

Ground Level Unit,
with 1 Bath, 1150 sq. ft.



All dimensions, positions, locations and details are approximate.

All rent prices and community information subject to change.