

# ASPEN GREEN AT SIMSBURY

## LEASING OFFICE

860.724.2790  
AspenGreenCT.com

20 Hopmeadow Street  
Simsbury, CT 06089



# ASPEN GREEN AT SIMSBURY

## SPACIOUS HOMES | UPSCALE AMENITIES | CONVENIENT LOCATION

Nestled in the picturesque hills west of Hartford, Aspen Green at Simsbury offers tranquility and convenience. Our community features rental townhomes and apartments ranging from 840 to 2,025 square feet, equipped with modern comforts such as stainless-steel appliances, breakfast bars, quartz countertops, and in-suite washer and dryers. Enjoy spacious closets, private balconies or patios, and attached garages for townhome residents. Community amenities include a clubhouse, fitness center, pool, tennis court, and easy access to the Simsbury bike lane system. Near top-rated schools and other conveniences, Aspen Green at Simsbury is perfect for families and singles alike. Discover your new home today!

Aspen Green at Simsbury offers a stunning selection of spacious one-, two-, and three-bedroom rental residences. Find the perfect floor plan to fit your lifestyle.



All renderings, amenities, existing or future views and photos depicted or otherwise described herein are proposed and conceptual only, and are based upon preliminary development plans, which are subject to withdrawal, revisions, and other changes, without notice. Please inquire within for more details.

6.19.24

# Aspen Green at Simsbury

Bedrooms	Name	Baths	Area	Pricing
1	The Birch	1	840 sq. ft.	\$2,475
1	The Cedar	1	957 sq. ft.	\$2,525
2	The Dogwood	2	1,197 sq. ft.	\$2,925
2	The Cypress	2	1,160 sq. ft.	\$2,825
2	The Elm	2	1,218 sq. ft.	\$3,025
3	The Sycamore	2.5	2,069 sq. ft.	\$4,700
3	The Redwood	2.5	1,986 sq. ft.	\$4,500
3	The Maple	2.5	1,828 sq. ft.	\$4,450
3	The Chestnut	2.5	2,166 sq. ft.	\$4,475
3	The Oak	2.5	1,916 sq. ft.	\$4,550
3	The Spruce	2.5	2,034 sq. ft.	\$4,700

\*All prices are subject to change.

## Apartment Amenities

- 1, 2, & 3 Bedroom Floorplans
- Carpeted Bedrooms
- Generous Closet Space
- Quartz Kitchen Countertops
- Spacious Floor Plans
- Attached Garage (Townhomes Only)
- Custom Kitchen Cabinets
- Individual Intercom System
- Resident Controlled Central Air & Heat
- Breakfast Bar
- GE Stainless Steel Appliances
- Private Patio or Balcony
- Soft Closing Kitchen Cabinet/Drawers

## Community Amenities

- 24-hour Emergency Maintenance
- Clubhouse
- Elevator Access (Select Buildings)
- Jogging Path/Walking Trail
- Tennis Court
- Cable Ready
- Controlled Access at Building Entry
- Fire Pits
- Private Entry via Patio (Select Apartments)
- Carports Available
- Electric Vehicle Charging Stations
- Fitness Center
- Swimming Pool

## Appliances

- Dishwasher
- Refrigerator/Freezer
- Microwave
- Washer & Dryer in Apartment
- Oven/Range

**Visit our Website - [www.AspenGreenCT.com](http://www.AspenGreenCT.com)**

## Rental Office Hours

Monday 10 - 6	Tuesday 10 - 6	Wednesday 10 - 6	Thursday 10 - 6	Friday 10 - 6	Saturday 10 - 4	Sunday CLOSED
------------------	-------------------	---------------------	--------------------	------------------	--------------------	------------------

When you decide to rent with Garden Communities, the following items will be required when you submit your application:

- An online deposit of \$500 in order to reserve an apartment. This amount will be applied to your first month's rent upon approval and ONLY refunded if your application is declined.
- A valid photo ID and social security card.

We are an equal opportunity provider. We do not discriminate on the basis of race, color, sex, national origin, religion, handicap or familial status.

# Aspen Green at Simsbury

**The Birch**  
**One Bedroom Floor Plan**  
 with 1 Bath, 840 sq. ft.



**The Cedar**  
**One Bedroom Floor Plan**  
 with 1 Bath, 960 sq. ft.



**The Cypress**  
**Two Bedroom Floor Plan**  
 with 2 Baths, 1160 sq. ft.



All dimensions, positions, locations and details are approximate.  
 All rent prices and community information subject to change.

# Aspen Green at Simsbury

**The Dogwood**  
**Two Bedroom Floor Plan**  
 with 2 Baths, 1200 sq. ft.



**The Elm**  
**Two Bedroom Floor Plan**  
 with 2 Baths, 1220 sq. ft.



**The Maple**  
**Three Bedroom Floor Plan - Town Home**  
 with 2.5 Baths, 1830 sq. ft.



All dimensions, positions, locations and details are approximate.  
 All rent prices and community information subject to change.



# Aspen Green at Simsbury

**The Oak**  
**Three Bedroom Floor Plan**  
**Town Home**  
 with 2.5 Baths, 1920 sq. ft.



**The Redwood**  
**Three Bedroom Floor Plan**  
**Town Home**  
 with 2.5 Baths, 1980 sq. ft.



**The Spruce**  
**Three Bedroom Floor Plan**  
**Town Home**  
 with Garage and 2.5 Baths, 2034 sq. ft.



All dimensions, positions, locations and details are approximate.  
 All rent prices and community information subject to change.



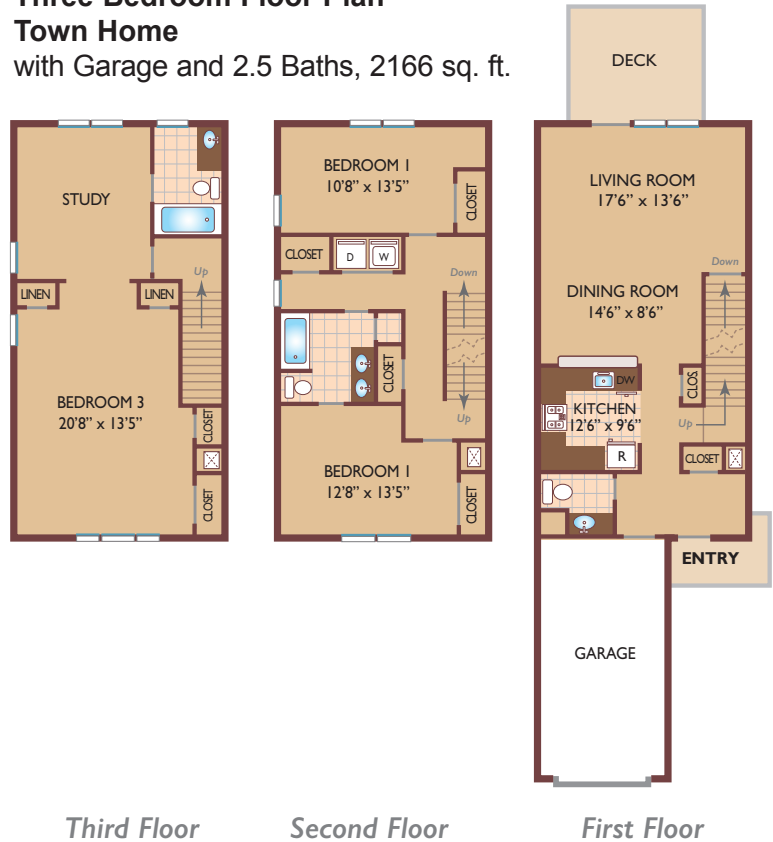


# Aspen Green at Simsbury

## The Sycamore Three Bedroom Floor Plan Town Home with 2.5 Baths, 2070 sq. ft.



## The Chestnut Three Bedroom Floor Plan Town Home with Garage and 2.5 Baths, 2166 sq. ft.



All dimensions, positions, locations and details are approximate.  
All rent prices and community information subject to change.

