



## THE RESIDENCES AT MAIN

### LEASING OFFICE

475.253.8852

TheResidencesAtMain.com

5085 Main Street  
Trumbull, CT 06611



# THE RESIDENCES AT MAIN

## SPACIOUS HOMES | RESORT-STYLE AMENITIES | CONVENIENT LOCATION

The Residences at Main is a new gated community of luxurious rental residences designed to offer pedestrian connectivity to the restaurants, shops and services at the nearby Trumbull Mall. Situated on Trumbull's historic Main Street, The Residences at Main feature spaciouly designed and beautifully appointed one- and two-bedroom apartment homes. Residents benefit from a relaxed recreational lifestyle, with amenities that include an outdoor heated pool with sundeck, residents' lounge, state-of-the-art fitness center, dog park, resident parking, and EV charging stations.

**The Residences at Main offers a stunning selection of spacious one- and two-bedroom rental residences. Find the perfect floor plan to fit your lifestyle.**



3.7.24

All renderings, amenities, existing or future views and photos depicted or otherwise described herein are proposed and conceptual only, and are based upon preliminary development plans, which are subject to withdrawal, revisions, and other changes, without notice. Please inquire within for more details.



# The Residences at Main

Bedrooms	Name	Baths	Area	Pricing
1	A-02	1	726 sq. ft.	\$2,470 - \$2,545
1	A-03	1	900 sq. ft.	\$2,700 - \$2,775
1	A-01	1	740 sq. ft.	\$2,750 - \$2,825
1	A-04	1	837 sq. ft.	\$2,650
2	B-02	2	1,005 sq. ft.	\$2,725 - \$2,800
2	B-01	2	1,116 sq. ft.	\$2,975 - \$3,150
2	B-07	2	1,167 sq. ft.	\$3,075 - \$3,250
2	B-06	2	1,231 sq. ft.	\$3,125 - \$3,250
2	B-04	1	1,154 sq. ft.	\$3,175 - \$3,250
2	B-08	2	1,179 sq. ft.	\$3,225 - \$3,300
2	B-03	2	1,153 sq. ft.	\$3,225 - \$3,350
2	B-05	2	1,153 sq. ft.	\$3,025 - \$3,050

\*All prices are subject to change.

## Apartment Amenities

- Cable Ready
- Eat-In Kitchen
- Large Dining Area
- Quartz Kitchen Countertops
- Soft Closing Kitchen Cabinet/Drawers

- Ceramic Tile Kitchen and Bathrooms
- Garage Parking (select homes)
- Oversized Closets
- Resident Controlled Central Air & Heat
- Spacious Floor Plans

- Custom Kitchen Cabinets
- Generous Closet Space
- Private Patio or Balcony
- Smoke Free

## Community Amenities

- 24-hour Emergency Maintenance
- Controlled Access at Building Entry
- Electric Vehicle Charging Stations
- Garage Parking in Select Homes
- Swimming Pool

- Accessible Jogging/Walking/Bike Trail
- Dog Park
- Elevator
- Latch Smart Door Locks

- Cable Ready
- Easy Access to the Trumbull Mall
- Fitness Center
- Storage Rooms and Cages Available

## Appliances

- Dishwasher
- Refrigerator

- Gas Oven/Range
- Washer & Dryer in Apartment

- Microwave

**Visit our Website - [www.TheResidencesAtMain.com](http://www.TheResidencesAtMain.com)**

## Rental Office Hours

Monday  
10-6

Tuesday  
10-6

Wednesday  
10-6

Thursday  
10-6

Friday  
10-6

Saturday  
10-5

Sunday  
10-5

When you decide to rent with Garden Communities, the following items will be required when you submit your application:

- An online deposit of \$500 in order to reserve an apartment. This amount will be applied to your first month's rent upon approval and ONLY refunded if your application is declined.
- A valid photo ID and social security card.

We are an equal opportunity provider. We do not discriminate on the basis of race, color, sex, national origin, religion, handicap or familial status.





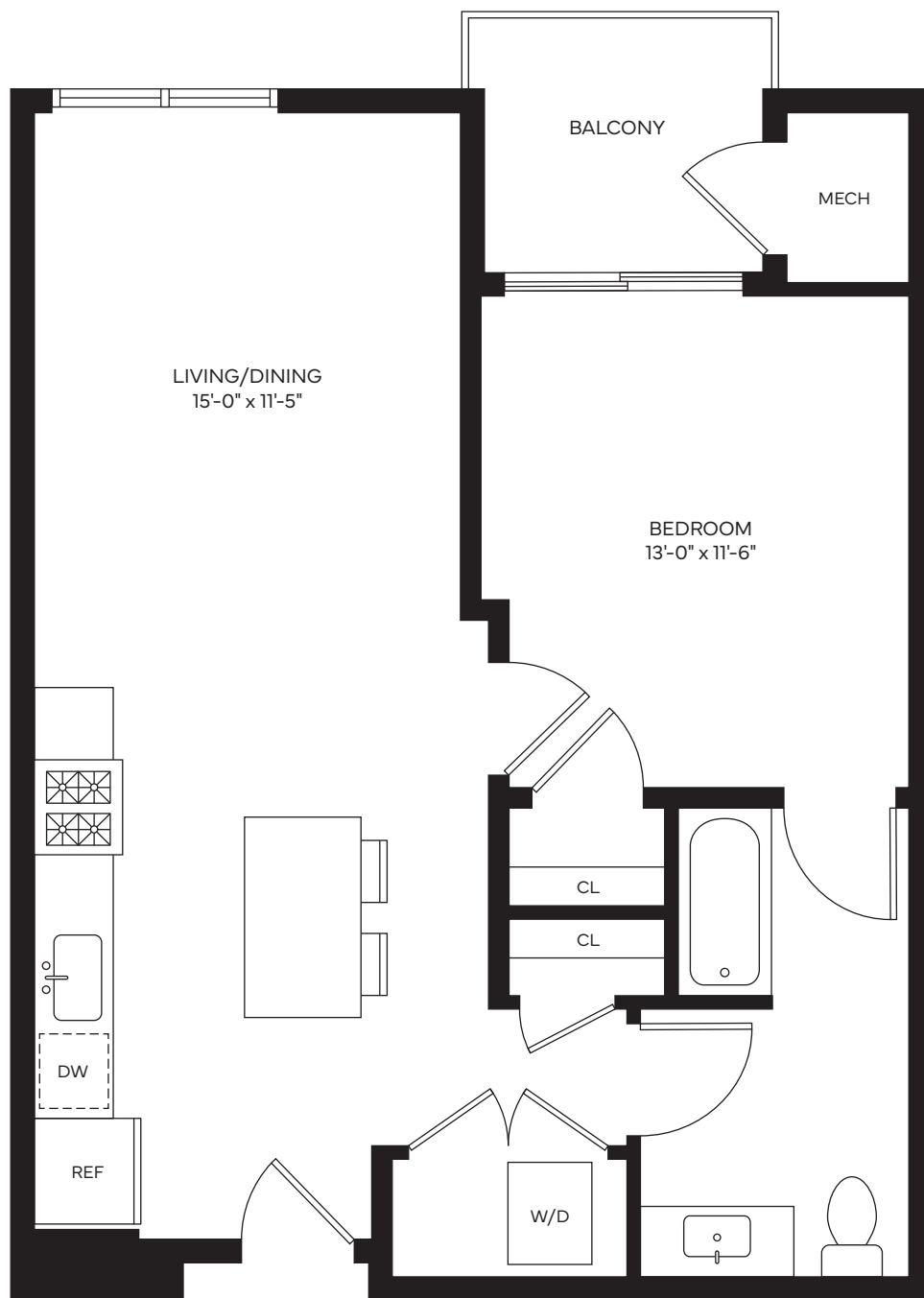
THE RESIDENCES AT MAIN  
TRUMBULL | CONNECTICUT

## RESIDENCE A-01

1 Bedroom | 1 Bath

With Balcony

740-785 SF

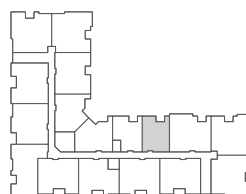


475.252.9717

[TheResidencesatMain.com](http://TheResidencesatMain.com)



All dimensions, positions, locations and details are approximate.



Garden  
Communities

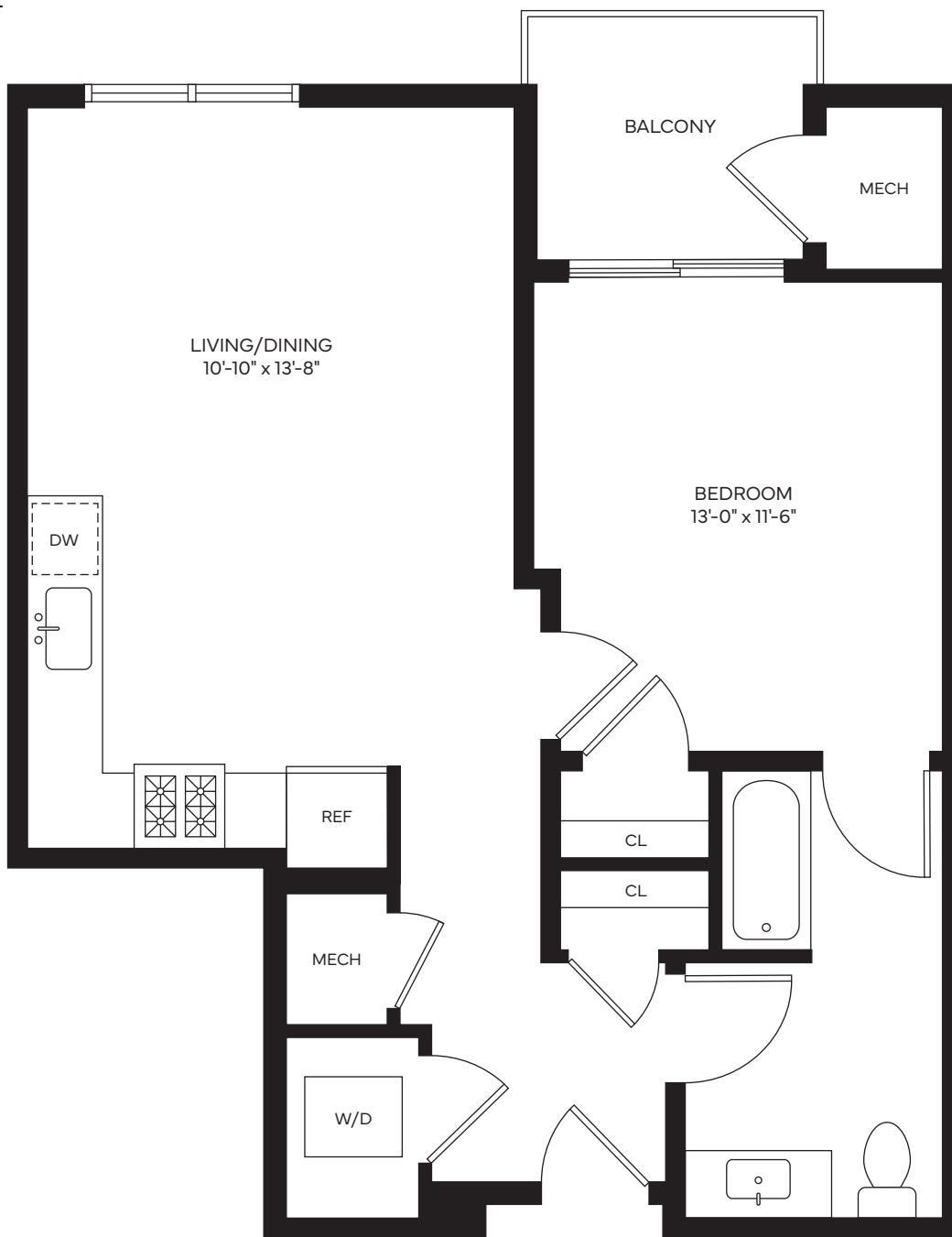


## RESIDENCE A-02

1 Bedroom | 1 Bath

With Balcony

726-736 SF



475.252.9717

[TheResidencesatMain.com](http://TheResidencesatMain.com)



All dimensions, positions, locations and details are approximate.



Garden  
Communities

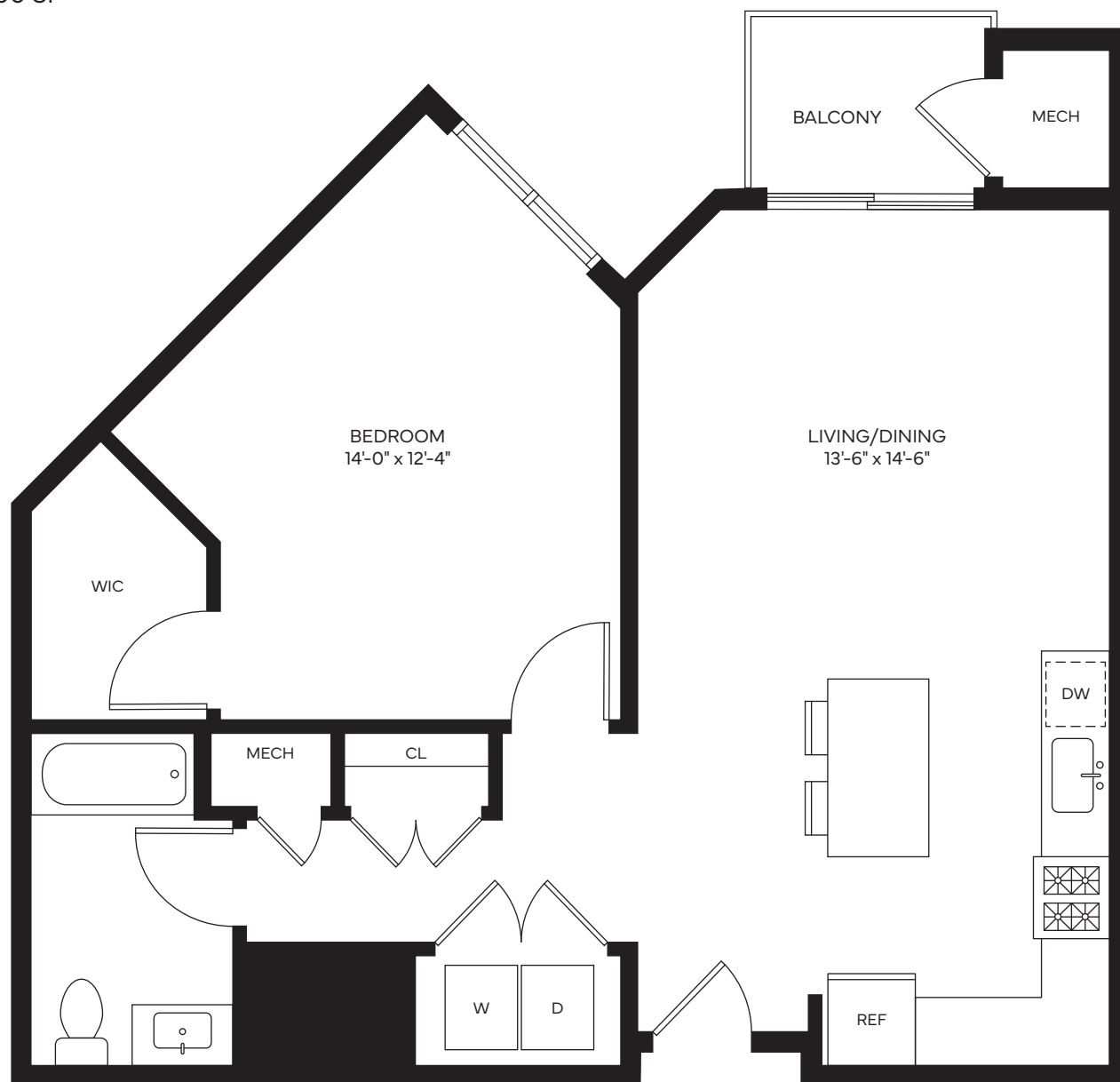


### RESIDENCE A-03

1 Bedroom | 1 Bath

With Balcony

900 SF

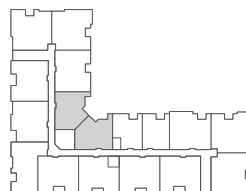


475.252.9717

[TheResidencesatMain.com](http://TheResidencesatMain.com)



All dimensions, positions, locations and details are approximate.



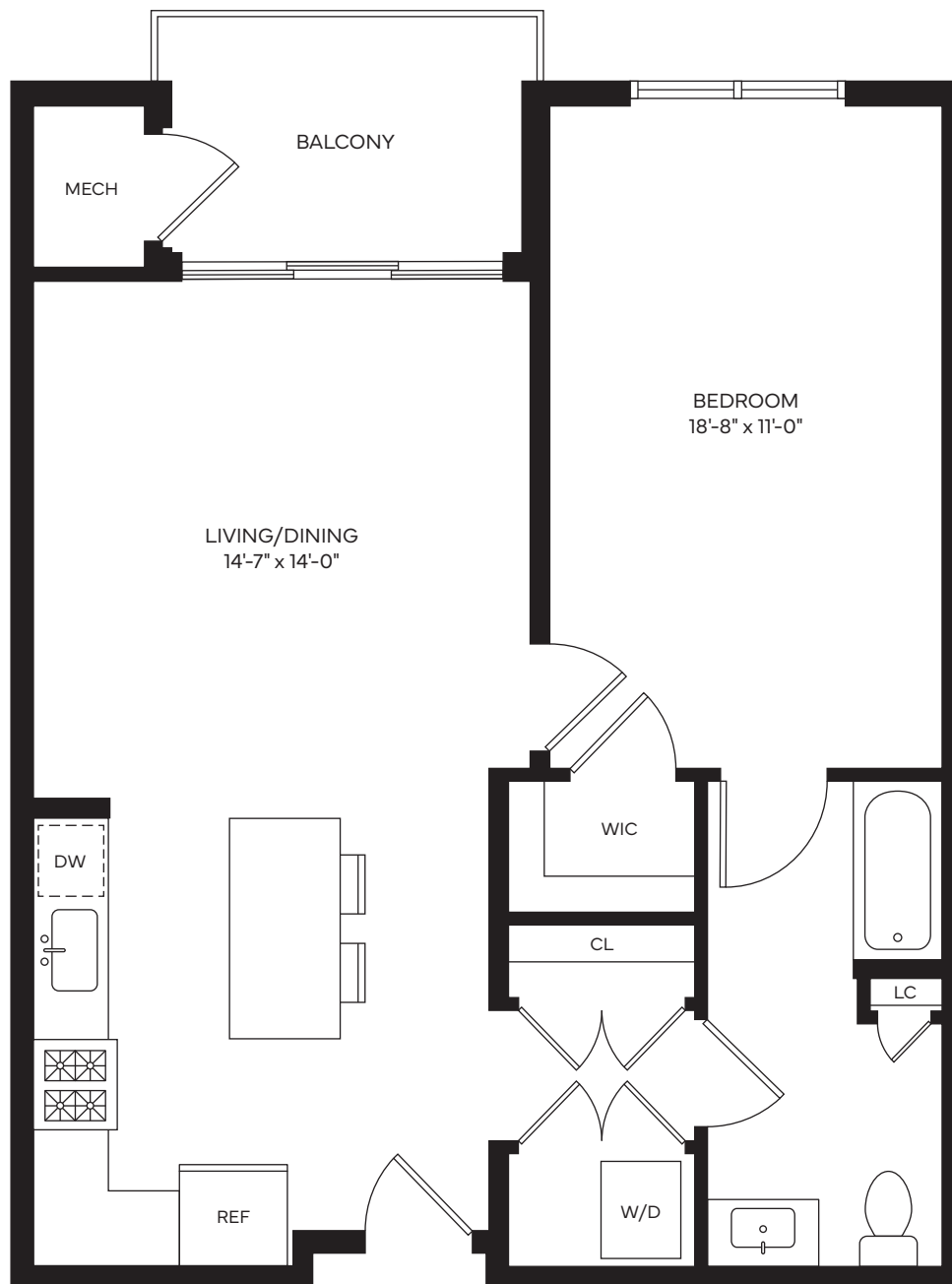


## RESIDENCE A-04

1 Bedroom | 1 Bath

With Balcony

837 SF



475.252.9717

[TheResidencesatMain.com](http://TheResidencesatMain.com)



All dimensions, positions, locations and details are approximate.



Garden  
Communities

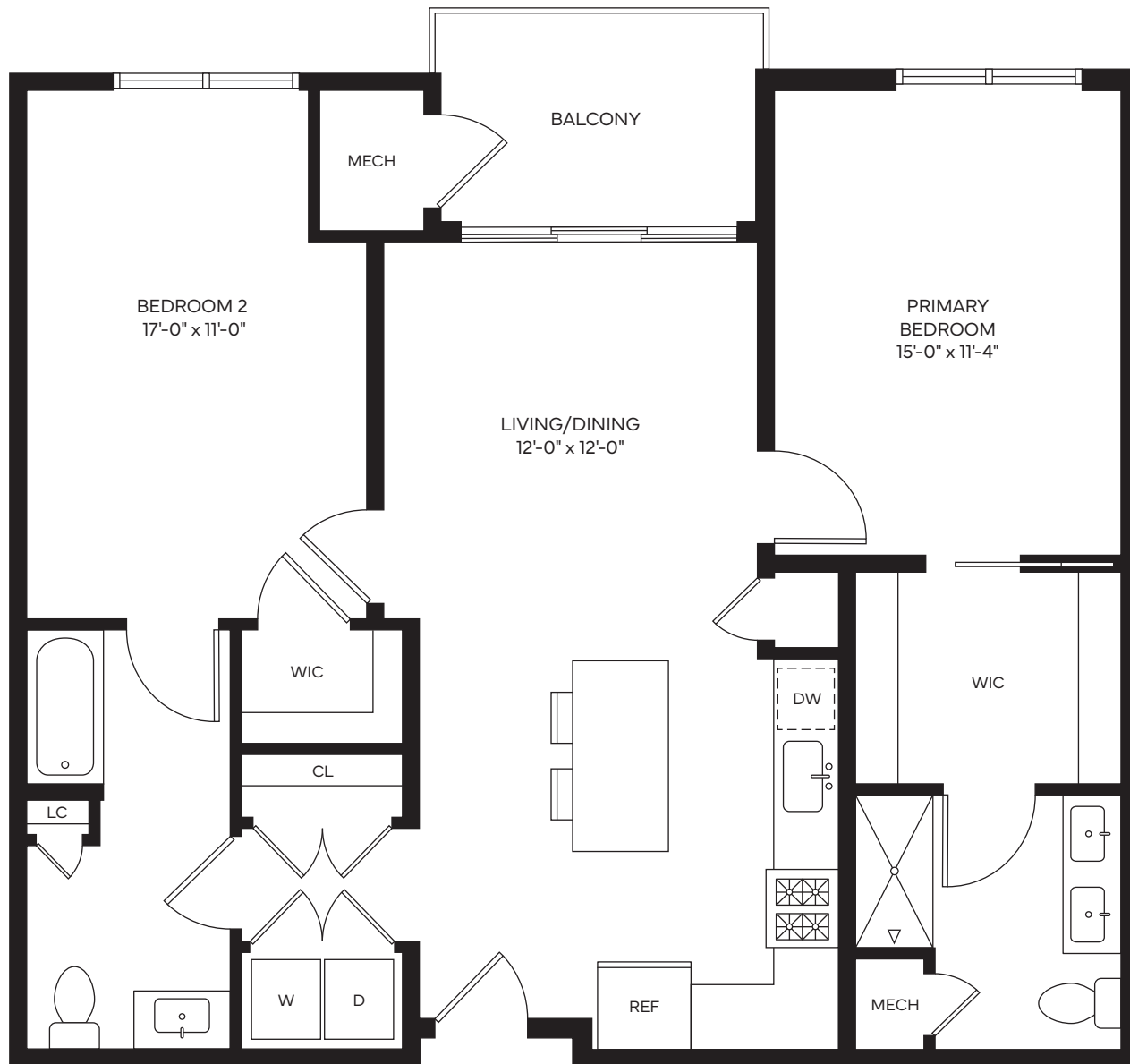


### RESIDENCE B-01

2 Bedroom | 2 Baths

With Balcony

1116 -1170 SF

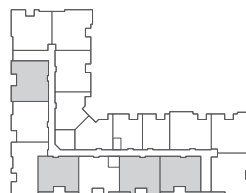


475.252.9717

[TheResidencesatMain.com](http://TheResidencesatMain.com)



All dimensions, positions, locations and details are approximate.



Garden  
Communities

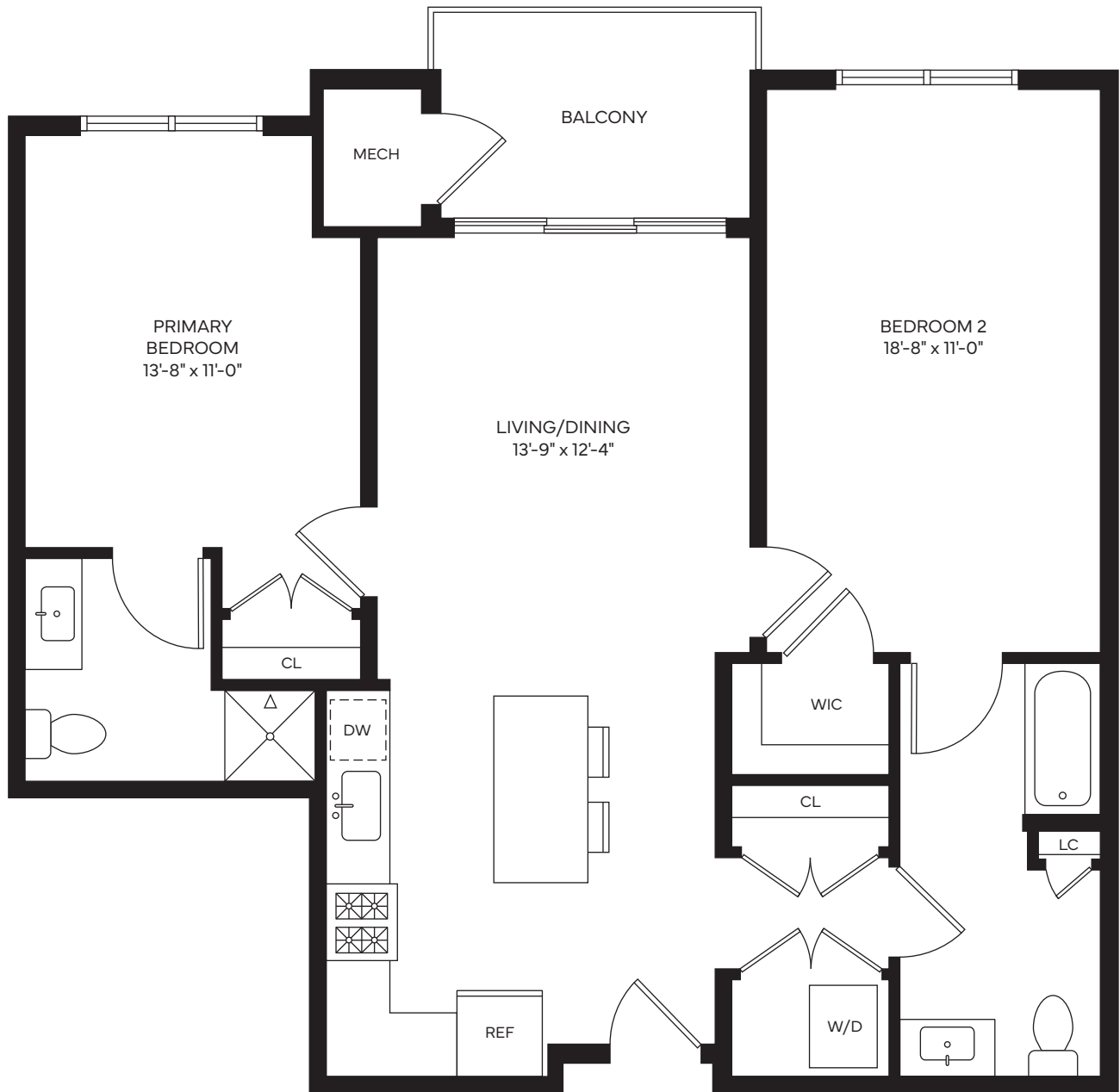


## RESIDENCE B-02

2 Bedroom | 2 Baths

With Balcony

1005-1058 SF



475.252.9717

[TheResidencesatMain.com](http://TheResidencesatMain.com)



All dimensions, positions, locations and details are approximate.



Garden  
Communities



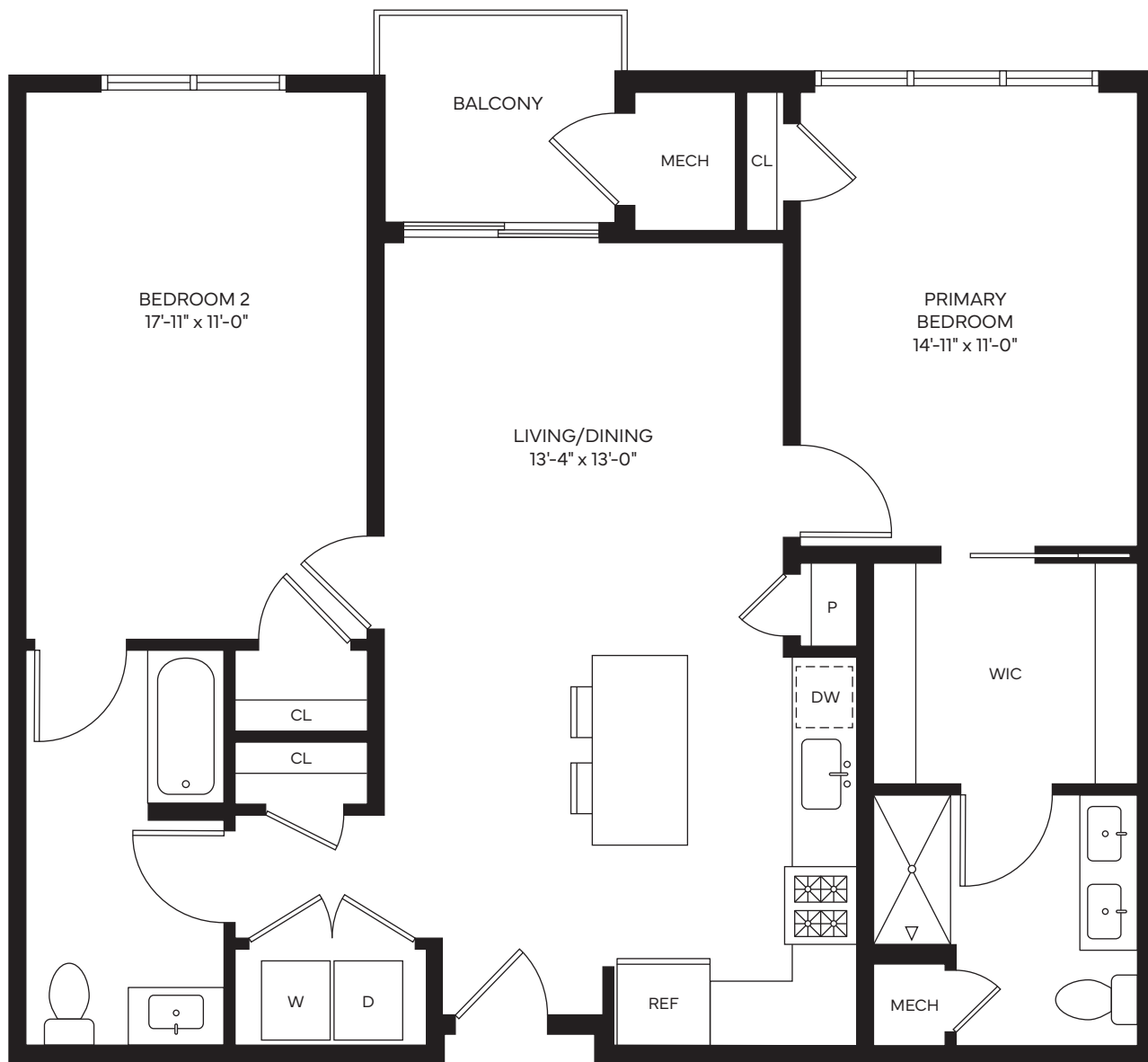


### RESIDENCE B-03

2 Bedroom | 2 Baths

With Balcony

1153-1251 SF



475.252.9717

[TheResidencesatMain.com](http://TheResidencesatMain.com)



All dimensions, positions, locations and details are approximate.



Garden  
Communities

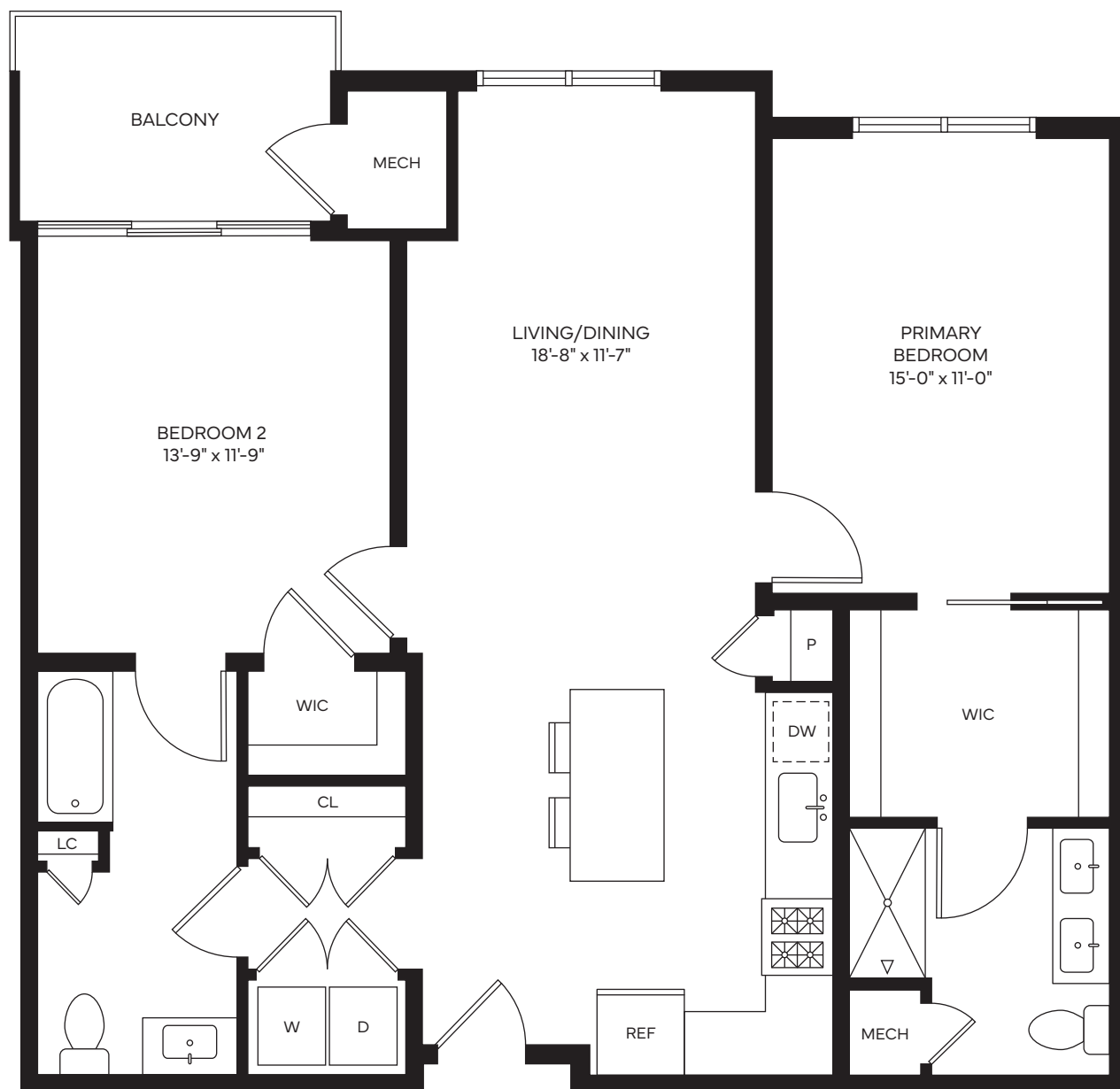


### RESIDENCE B-04

2 Bedroom | 2 Baths

With Balcony

1154 SF

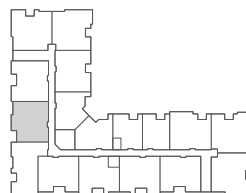


475.252.9717

[TheResidencesatMain.com](http://TheResidencesatMain.com)



All dimensions, positions, locations and details are approximate.



Garden  
Communities

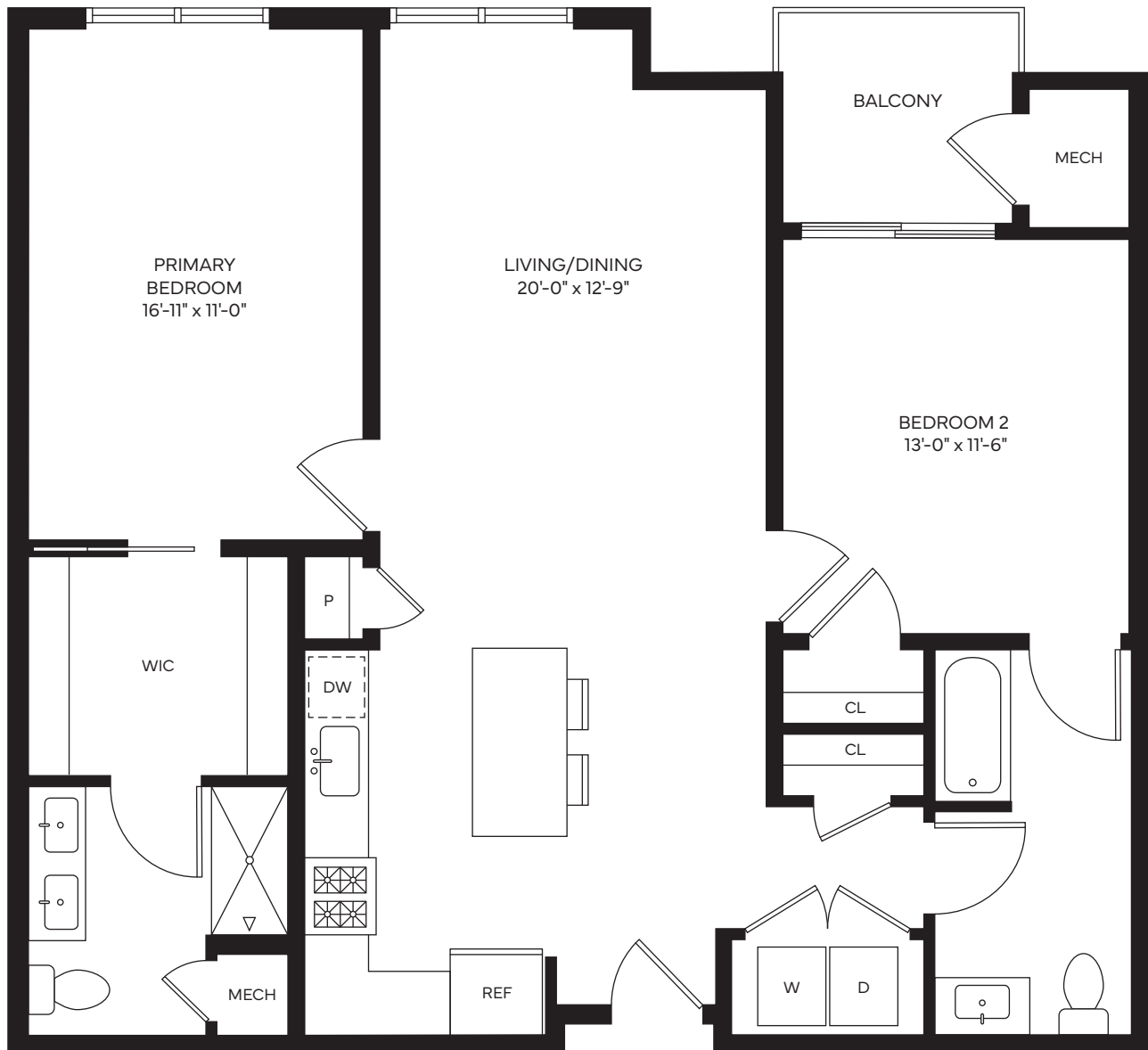


## RESIDENCE B-05

2 Bedroom | 2 Baths

With Balcony

1153-1195 SF

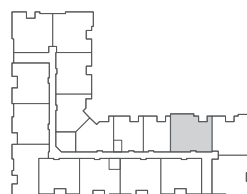


475.252.9717

[TheResidencesatMain.com](http://TheResidencesatMain.com)



All dimensions, positions, locations and details are approximate.



Garden  
Communities



## RESIDENCE B-06

Corner 2 Bedroom | 2 Baths

With Balcony

1231 SF

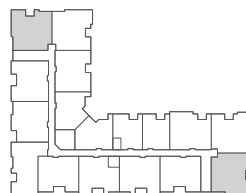


475.252.9717

[TheResidencesatMain.com](http://TheResidencesatMain.com)



All dimensions, positions, locations and details are approximate.



Garden  
Communities

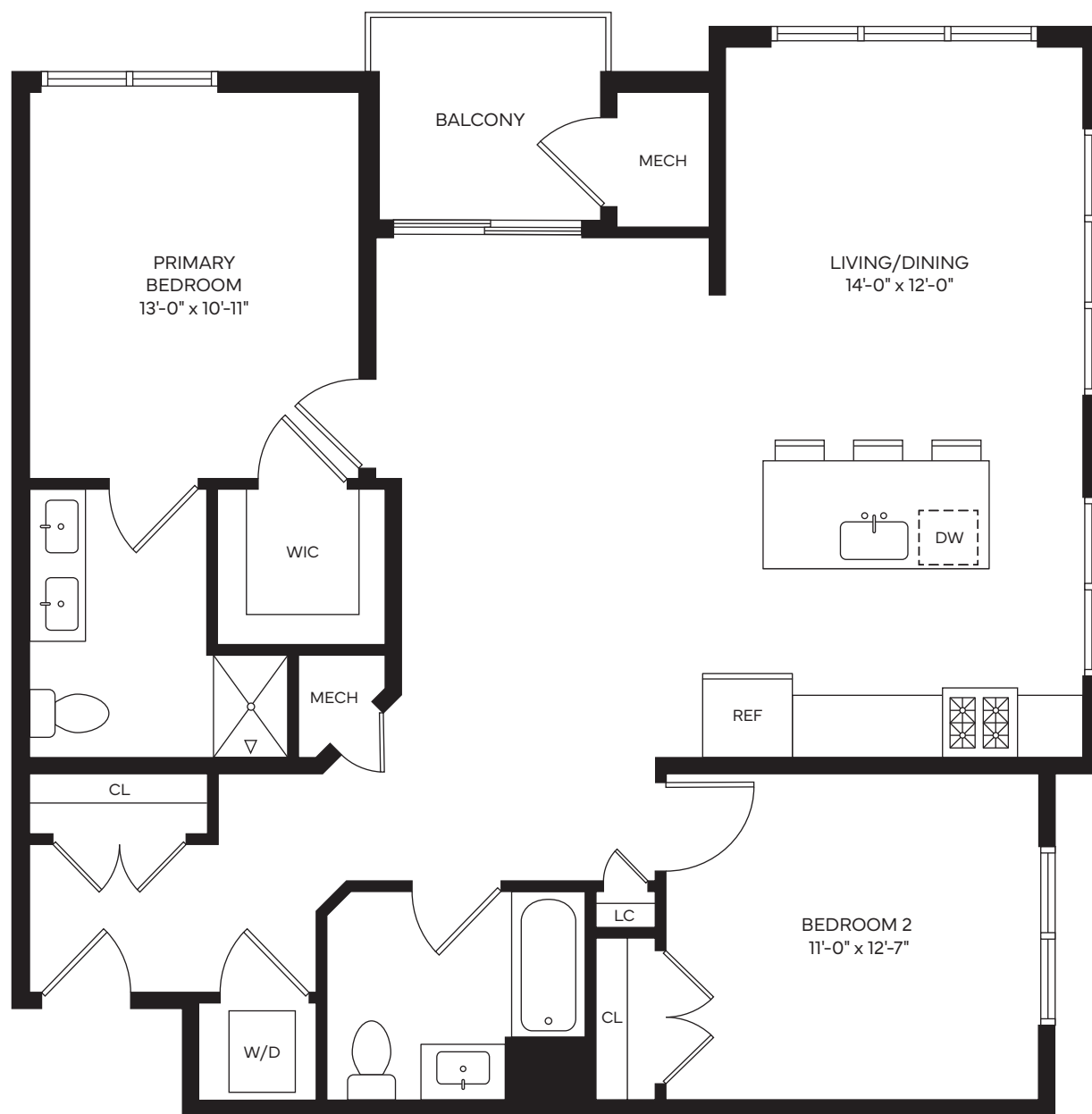


## RESIDENCE B-07

Corner 2 Bedroom | 2 Baths

With Balcony

1167-1246 SF

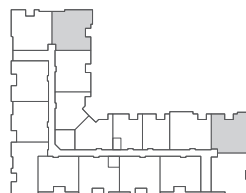


475.252.9717

[TheResidencesatMain.com](http://TheResidencesatMain.com)



All dimensions, positions, locations and details are approximate.



Garden  
Communities

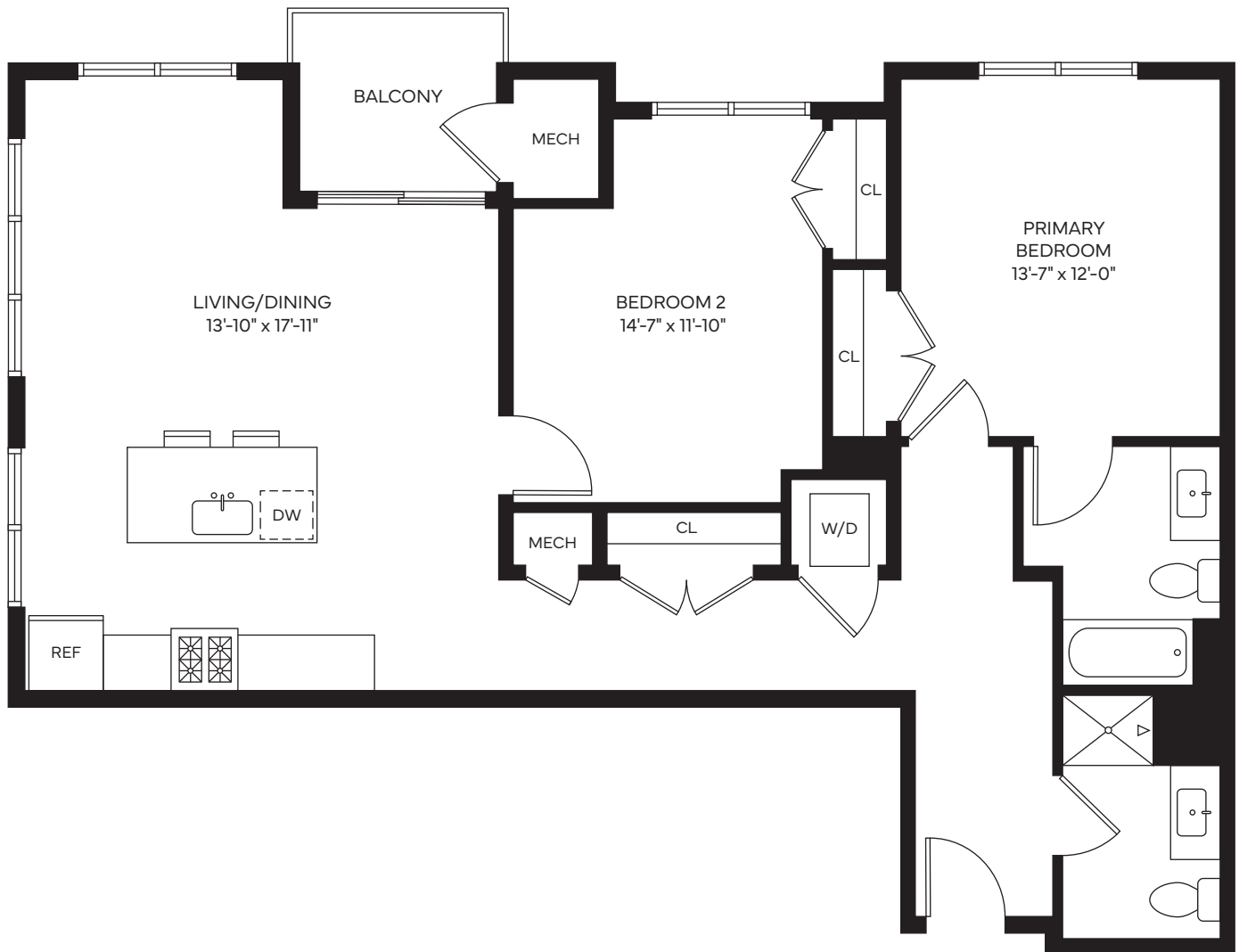


## RESIDENCE B-08

Corner 2 Bedroom | 2 Baths

With Balcony

1179 SF



475.252.9717

[TheResidencesatMain.com](http://TheResidencesatMain.com)



All dimensions, positions, locations and details are approximate.

