

WOODLAND GREEN

LEASING OFFICE

860.824.6168

WoodlandGreenInBloomfieldCT.com

199 Privilege Road
Bloomfield, CT 06002



WOODLAND GREEN

SPACIOUS HOMES | UPSCALE AMENITIES | CONVENIENT LOCATION

Discover luxury living at Woodland Green in Bloomfield, CT. Nestled in a tranquil wooded setting, this Garden Communities CT rental community offers spacious 2- and 3 -bedroom townhomes that blend comfort with style. Just 10 minutes from downtown Hartford, Woodland Green provides a peaceful retreat with easy access to shopping, dining, and top-rated schools in Hartford County. Commuters enjoy proximity to Bradley Airport, Springfield, and major highways. Inside, homes feature stainless steel appliances, private patios or balconies, and attached garages. Community amenities include a pool, fitness center, dog park, and electric vehicle charging stations. Live where nature meets luxury and convenience - welcome home.

Woodland Green offers a stunning selection of spacious two- and three-bedroom rental townhome residences. Find the perfect floor plan to fit your lifestyle.



All renderings, amenities, existing or future views and photos depicted or otherwise described herein are proposed and conceptual only, and are based upon preliminary development plans, which are subject to withdrawal, revisions, and other changes, without notice. Please inquire within for more details.

12.4.24

Woodland Green in Bloomfield

Bedrooms	Name	Baths	Area	Pricing
2	2 Bedroom Townhome_ Plan C	2.5	2,161 sq. ft.	\$3,675
3	3 Bedroom Townhome_ Plan D	2.5	1,866 sq. ft.	\$3,375 - \$3,525
3	3 Bedroom Townhome_ Plan A	2.5	2,174 sq. ft.	\$3,800
3	3 Bedroom Townhome_ Plan B	2.5	2,003 sq. ft.	\$3,575

*All prices are subject to change.

Apartment Amenities

- Breakfast Bar
- Custom Kitchen Cabinets
- Oversized Closets
- Quartz Kitchen Countertops
- Spacious Floor Plans
- Carpeted Bedrooms
- Generous Closet Space
- Private Attached Garage
- Resident Controlled Central Air & Heat
- Washer & Dryer in Apartment
- Ceramic Tile Kitchen and Bathrooms
- Kitchen Island
- Private Patio or Balcony
- Soft Closing Kitchen Cabinet/Drawers

Community Amenities

- 24-hour Emergency Maintenance
- Dog Park
- Gazebo
- Swimming Pool
- Cable Ready
- Electric Vehicle Charging Stations
- On-Site Management
- Tennis Court
- Clubhouse
- Fitness Center
- Playground

Appliances

- Convection Oven
- Dishwasher
- Stainless Steel Appliances
- Microwave
- Washer & Dryer in Apartment
- Refrigerator/Freezer

Visit our Website - www.WoodlandGreeninBloomfieldCT.com

Rental Office Hours

Monday 9-5	Tuesday 9-5	Wednesday 9-5	Thursday 9-5	Friday 9-5	Saturday 10-5	Sunday Closed
---------------	----------------	------------------	-----------------	---------------	------------------	------------------

When you decide to rent with Garden Communities, the following items will be required when you submit your application:

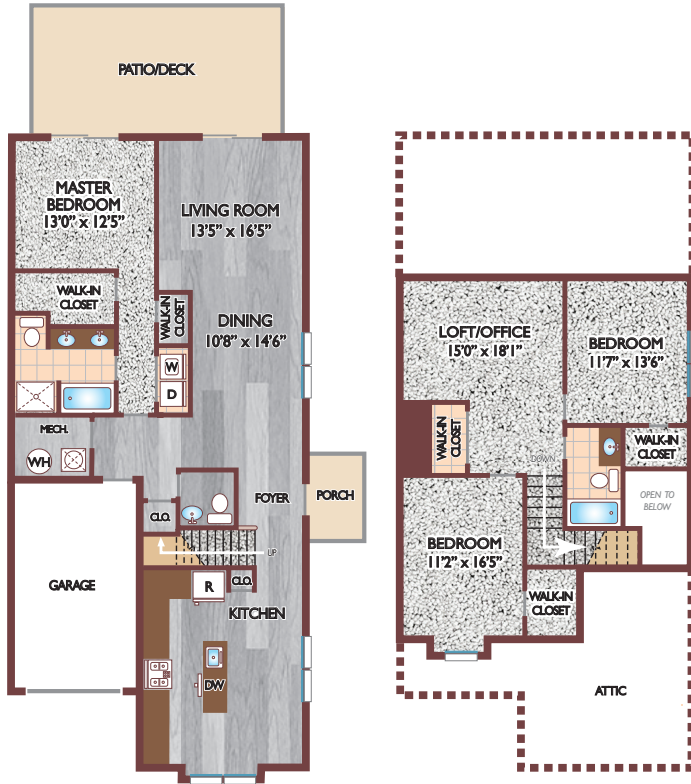
- An online deposit of \$500 in order to reserve an apartment. This amount will be applied to your first month's rent upon approval and ONLY refunded if your application is declined.
- A valid photo ID and social security card.

We are an equal opportunity provider. We do not discriminate on the basis of race, color, sex, national origin, religion, handicap or familial status.

Woodland Green Apartments

Three Bedroom Floor Plan
with 2.5 Bath, 2174 sq. ft.

Unit A



Three Bedroom Floor Plan
with 2.5 Bath, 2003 sq. ft.

Unit B



All dimensions, positions, locations and details are approximate.
All rent prices and community information subject to change.

Woodland Green Apartments

Three Bedroom Floor Plan
with 2.5 Bath, 2023 sq. ft.

Unit B-1



Two Bedroom Floor Plan
with 2.5 Bath, 2161 sq. ft.

Unit C



All dimensions, positions, locations and details are approximate.
All rent prices and community information subject to change.

Woodland Green Apartments

Three Bedroom Floor Plan
with 2.5 Bath, 1866 sq. ft.

Unit D



All dimensions, positions, locations and details are approximate.
All rent prices and community information subject to change.

83 Privilege Road, Bloomfield, CT 06002
P: 860.362.0911



www.WoodlandGreeninBloomfieldCT.com
WoodlandGreen.Rental@GardenCommunities.com

All dimensions, positions, locations and details are approximate.