

BIRCHWOOD PARK

LEASING OFFICE

908.224.4289
BirchwoodParkNJ.com

215 Birchwood Avenue
Cranford, NJ 07016



BIRCHWOOD PARK

SPACIOUS HOMES | UPSCALE AMENITIES | CONVENIENT LOCATION

Discover the perfect blend of luxury and convenience at Birchwood Park in Cranford, NJ. Set on 15 acres of serene parkland, this exceptional community offers stunning views and an unbeatable location near Cranford's top-rated downtown and the Raritan Valley Line. Spacious 1- and 2-bedroom residences feature upscale finishes like quartz countertops, stainless steel appliances, oversized showers with double vanities, walk-in closets, and private balconies. Enjoy modern comforts including in-home laundry and central air. Elevate your lifestyle with community amenities including an expansive clubhouse with fireplace, state-of-the-art fitness center, game room, TV lounge, and scenic walking trails.

Birchwood Park offers a stunning selection of spacious one- and two-bedroom rental residences. Find the perfect floor plan to fit your lifestyle.



6.4.25

All renderings, amenities, existing or future views and photos depicted or otherwise described herein are proposed and conceptual only, and are based upon preliminary development plans, which are subject to withdrawal, revisions, and other changes, without notice. Please inquire within for more details.

Birchwood Park

| Bedrooms | Name | Baths | Area | Pricing |
|----------|------|-------|---------------|-------------------|
| 1 | 1B | 2 | 1,410 sq. ft. | \$3,640 |
| 1 | 1A | 1 | 915 sq. ft. | \$2,800 - \$2,850 |
| 2 | 2A | 2 | 1,360 sq. ft. | \$3,770 - \$3,870 |
| 2 | 2C | 2 | 1,192 sq. ft. | \$3,520 - \$4,380 |
| 2 | 2B | 2 | 1,775 sq. ft. | \$4,580 |

*All prices are subject to change.

Apartment Amenities

- Carpeted Bedrooms
- Living Room with Private Balcony/Patio
- Resident Controlled Central Air & Heat
- Wood Plank Flooring
- Eat-In Kitchen
- Primary Suite with Double Sink
- Smart Latch Access System
- Generous Closet Space
- Quartz Kitchen Countertops
- Voluminous 9' High Ceilings

Community Amenities

- 24-Hour Emergency Maintenance
- Common Lounge
- Free Covered Parking
- Jogging Path/Walking Trail
- Picnic/Barbecue Area
- Verizon FIOS Available
- Cable Ready
- Elevator
- Friendly, Quiet Neighborhood
- No Amenity Fees
- Public Transportation
- Clubhouse
- Fitness Center
- Guided Fitness Classes
- Package Room
- Smoke-Free Community

Appliances

- Dishwasher
- Refrigerator/Freezer
- Microwave
- Oven/Range

Visit our Website - www.BirchwoodParkNJ.com

Rental Office Hours

| | | | | | | |
|---------------------|----------------------|------------------------|-----------------------|---------------------|------------------|------------------|
| Monday 8:30-4:30 | Tuesday 8:30-4:30 | Wednesday 8:30-4:30 | Thursday 8:30-4:30 | Friday 8:30-4:30 | Saturday 10-4 | Sunday Closed |
|---------------------|----------------------|------------------------|-----------------------|---------------------|------------------|------------------|

When you decide to rent with Garden Communities, the following items will be required when you submit your application:

- Non-refundable online application processing Fee. \$85 per applicant
- An online deposit of \$500 in order to reserve an apartment. This amount will be applied to your first month's rent upon approval and ONLY refunded if your application is declined.
- A valid photo ID and social security card.

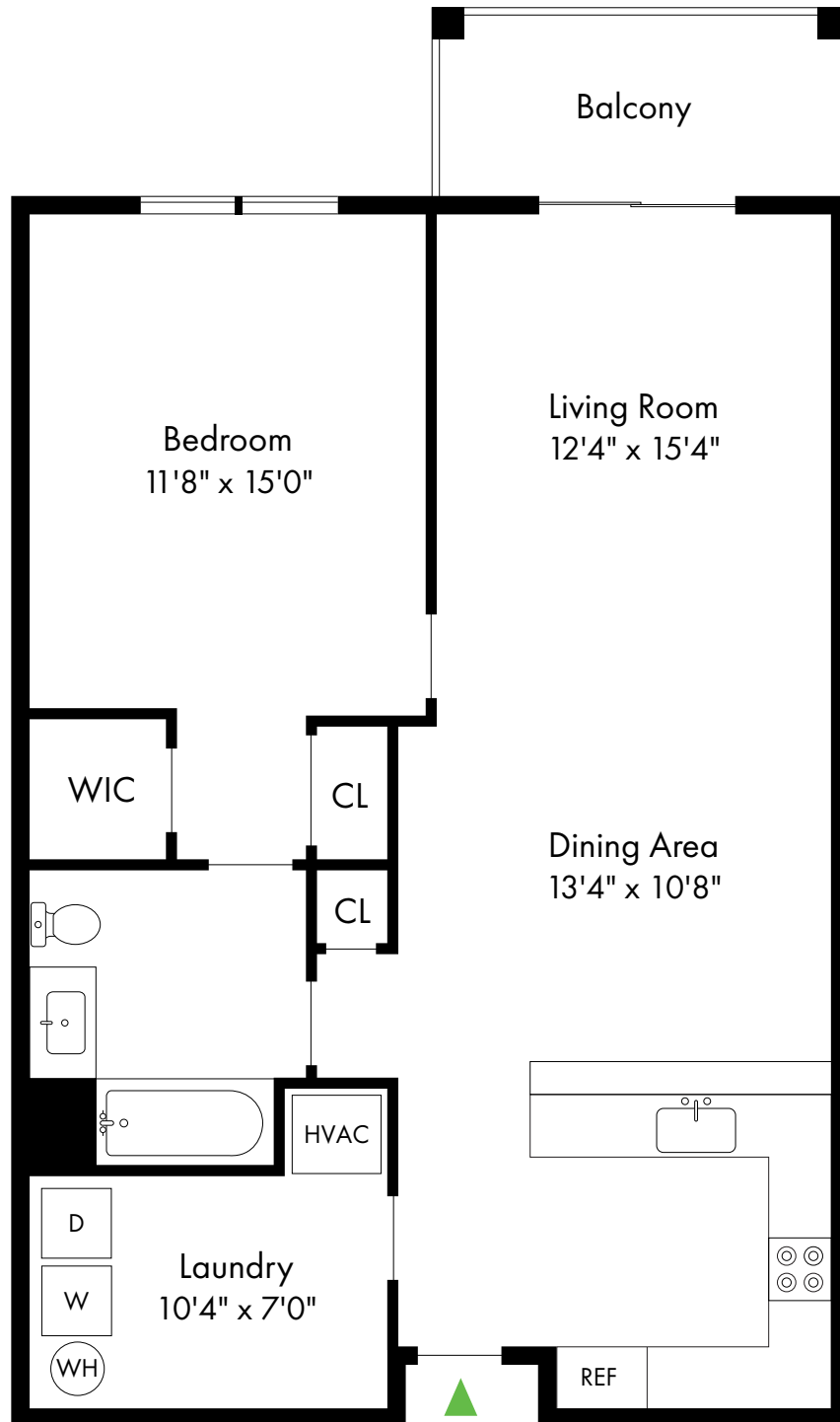
We are an equal opportunity provider. We do not discriminate on the basis of race, color, sex, national origin, religion, handicap or familial status.

Birchwood Park

1A

Cranford, NJ

1 Bed, 1 Bath | 915 - 956 SF



908.336.4567

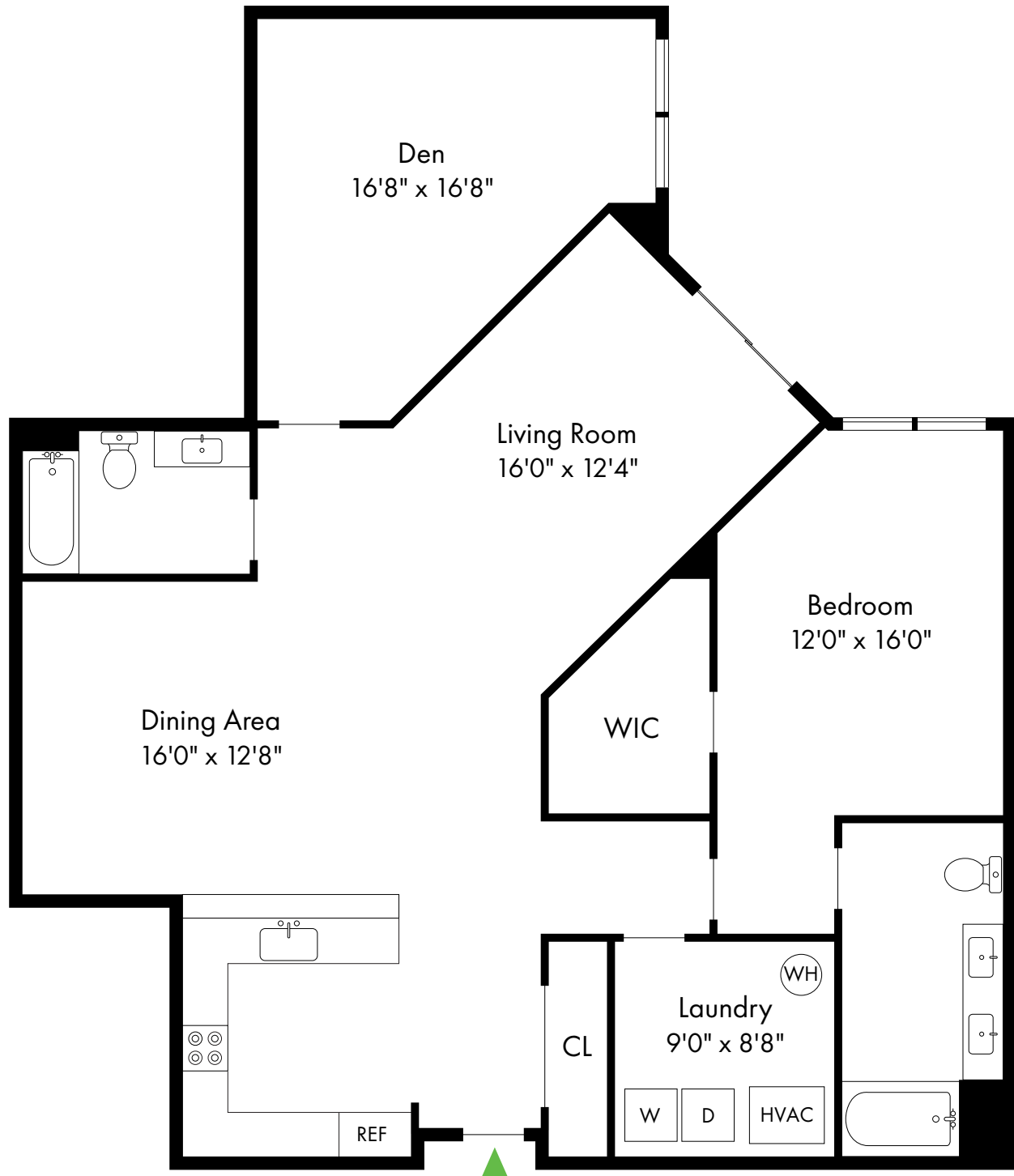
www.BirchwoodParkNJ.com

Birchwood Park

1B

Cranford, NJ

1 Bed, 2 Bath with Den | 1,545 SF

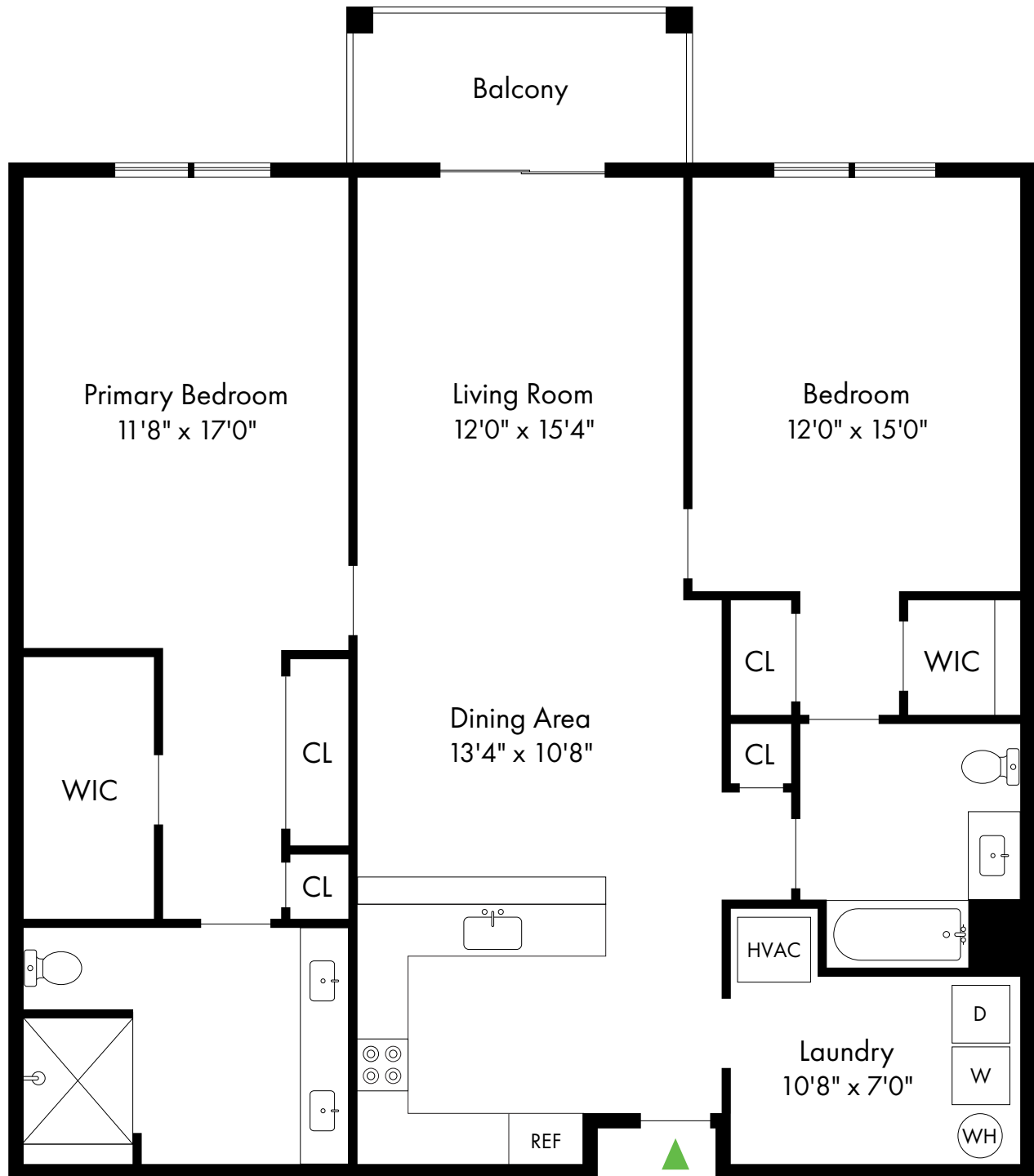


Birchwood Park

2A

Cranford, NJ

2 Bed, 2 Bath | 1,360 - 1,395 SF

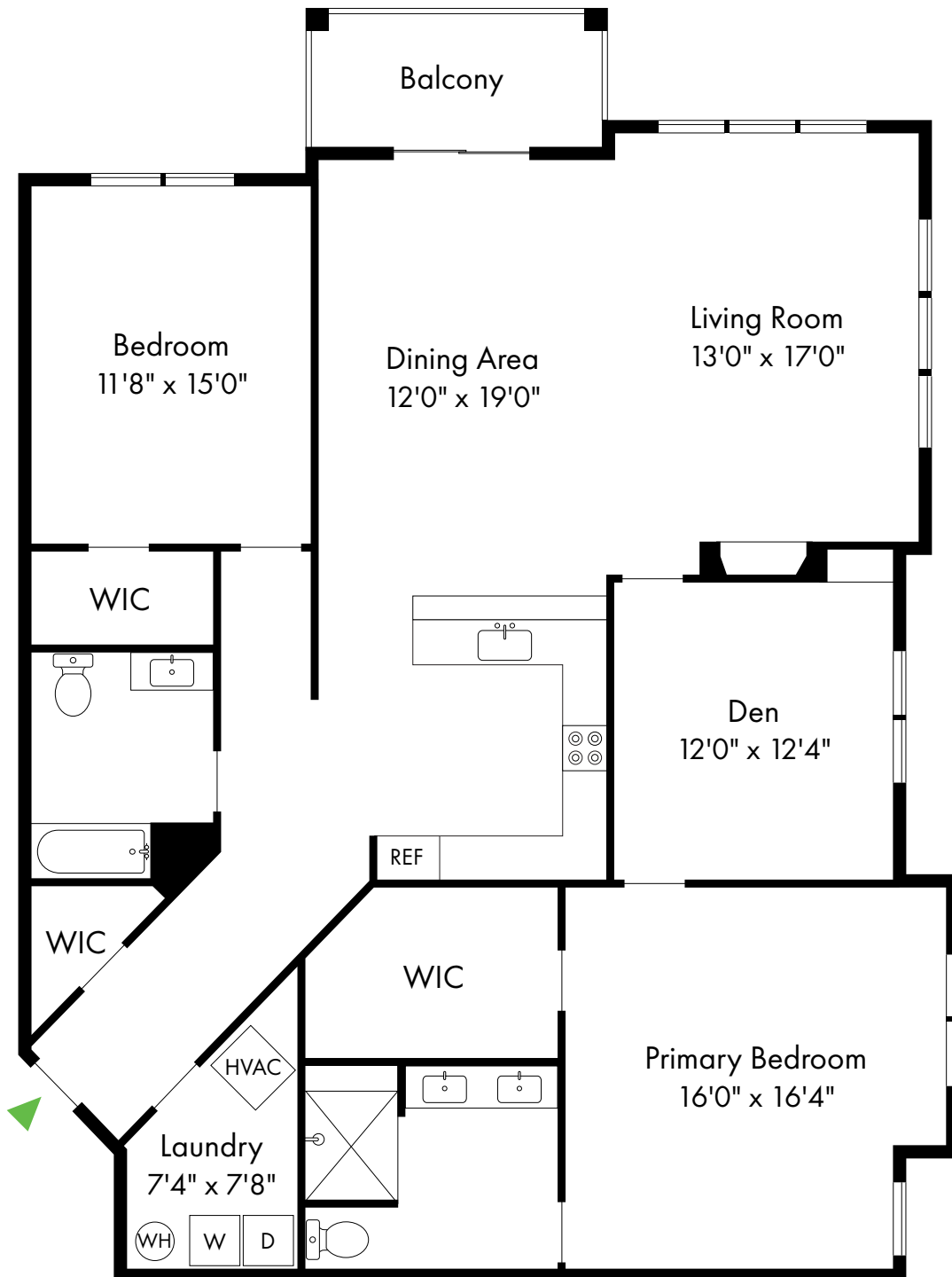


Birchwood Park

2B

Cranford, NJ

2 Bed, 2 Bath with Den | 1,775 - 1,802 SF



908.336.4567

www.BirchwoodParkNJ.com

Birchwood Park

2C

Cranford, NJ

2 Bed, 2 Bath | 1,477 - 1,771 SF

