

# BROOKFIELD GARDENS

34 Western Avenue #11, Ewing NJ 08618 (609) 796-2036



Brookfield Gardens is a collection of 192 garden style apartments, located in the Mercer County Township of Ewing, N.J. Each newly renovated unit features kitchens with refrigerators and gas range, hardwood flooring throughout, and air conditioning. Residences range from 775 to 1,040 square feet of living space and are available with one, two or three bedrooms. In addition to the convenience of 24-hour emergency maintenance, and ample parking, residents of Brookfield Gardens enjoy the ideal location just minutes from a number of major highways, including Routes 29, 195, 295 and the New Jersey Turnpike.

[www.BrookfieldGardensNJ.com](http://www.BrookfieldGardensNJ.com) (609) 796-2036



WE ARE AN EQUAL HOUSING OPPORTUNITY PROVIDER. WE DO NOT DISCRIMINATE ON THE BASIS OF RACE, COLOR, SEX, NATIONAL ORIGIN, RELIGION, HANDICAP OR FAMILIAL STATUS.

WF-Brookfield071317



# Brookfield Gardens

Bedrooms	Name	Baths	Area	Pricing
1	1 bedroom	1	775 sq. ft.	\$1,600
2	2 Bedroom	1	890 sq. ft.	\$1,900
3	Townhome	1.5	775 sq. ft.	\$2,335

\*All prices are subject to change.

## Apartment Amenities

- Air Conditioning
- Spacious Floor Plans

## Community Amenities

- 24-Hour Emergency Maintenance
- Cable Ready
- Friendly, Quiet Neighborhood
- Natural Gas
- Public Transit Nearby
- Security Lighting
- Verizon FIOS Available

## Appliances

- Oven/Range
- Range Hood
- Refrigerator/Freezer

**Visit our Website - [www.BrookfieldGardensNJ.com](http://www.BrookfieldGardensNJ.com)**

## Rental Office Hours

Monday 8-4	Tuesday 8-4	Wednesday 8-4	Thursday 8-4	Friday 8-4	Saturday By appt.	Sunday Closed
---------------	----------------	------------------	-----------------	---------------	----------------------	------------------

When you decide to rent with Garden Communities, the following items will be required when you submit your application:

- Non-refundable online application processing Fee. \$75 per applicant
- An online deposit of \$200 in order to reserve an apartment. This amount will be applied to your first month's rent upon approval and ONLY refunded if your application is declined.
- A valid photo ID, social security card and two current pay stubs.

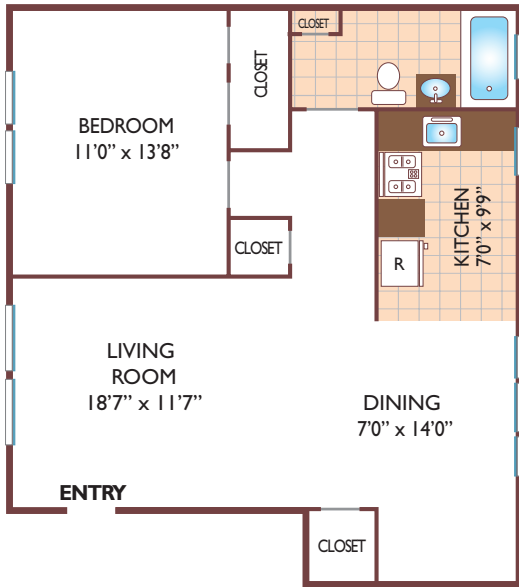
We are an equal opportunity provider. We do not discriminate on the basis of race, color, sex, national origin, religion, handicap or familial status.



# Brookfield Gardens

## One Bedroom Floor Plan

Lower, with 1 Bath, 775 sq. ft.



## Two Bedroom Floor Plan

Lower, with 1 Bath, 890 sq. ft.



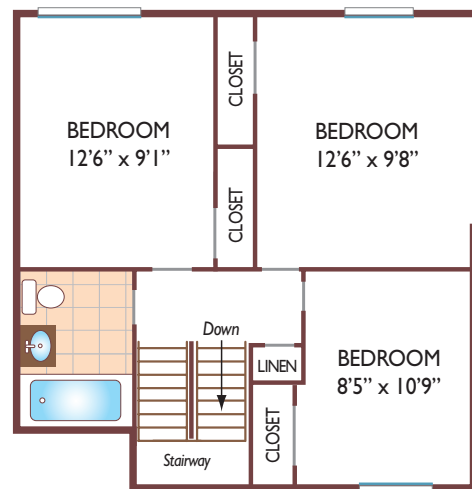
## Three Bedroom Floor Plan

TownHome

with 1 & 1/2 Bath, 1050 sq. ft.



FIRST FLOOR PLAN



SECOND FLOOR PLAN

All dimensions, positions, locations and details are approximate.

All rent prices and community information subject to change.