

# CAMBRIDGE MANOR

539 North Broad Street, Elizabeth, NJ 07208 (908) 998-2929



The Union County city of Elizabeth is home to Cambridge Manor, an intimate collection of 125 residences. The newly renovated residences at Cambridge Manor feature studio, one and two bedroom apartments ranging in size from 500 to 925 square feet of living space. Interiors boast a number of sought after appointments, including eat-in kitchens with refrigerators, gas range, carpeting and hardwood flooring, air conditioning and walk-in closets. Residents enjoy living close to the popular Greenbelt Park and with a number of walking paths. An onsite laundry facility and 24-hour maintenance are added conveniences.

[www.CambridgeManorNJ.com](http://www.CambridgeManorNJ.com) (908) 998-2929



WE ARE AN EQUAL HOUSING OPPORTUNITY PROVIDER. WE DO NOT DISCRIMINATE ON THE BASIS OF RACE, COLOR, SEX, NATIONAL ORIGIN, RELIGION, HANDICAP OR FAMILIAL STATUS.

WF-Makor103019



# Cambridge Manor

Bedrooms	Name	Baths	Area	Pricing
0	Studio	1	500 sq. ft.	\$1,520
1	One Bedroom	1	540-615 sq. ft.	\$1,850 - \$2,000
2	Two Bedroom	1	925 sq. ft.	\$2,175

\*All prices are subject to change.

## Apartment Amenities

- Air Conditioning
- Eat-In Kitchen
- Plush Wall-To-Wall Carpet

## Community Amenities

- 24-Hour Emergency Maintenance
- Laundry Facilities
- Security Lighting

## Appliances

- Cook Top
- Oven/Range
- Range Hood
- Refrigerator/Freezer
- Wall Oven

Visit our Website - [www.CambridgeManorNJ.com](http://www.CambridgeManorNJ.com)

## Rental Office Hours

Monday 9-4	Tuesday 9-4	Wednesday 9-4	Thursday 9-4	Friday 9-4	Saturday closed	Sunday closed
---------------	----------------	------------------	-----------------	---------------	--------------------	------------------

When you decide to rent with Garden Communities, the following items will be required when you submit your application:

- Non-refundable online application processing Fee. \$75 per applicant
- An online deposit of \$200 in order to reserve an apartment. This amount will be applied to your first month's rent upon approval and ONLY refunded if your application is declined.
- A valid photo ID, social security card and two current pay stubs.

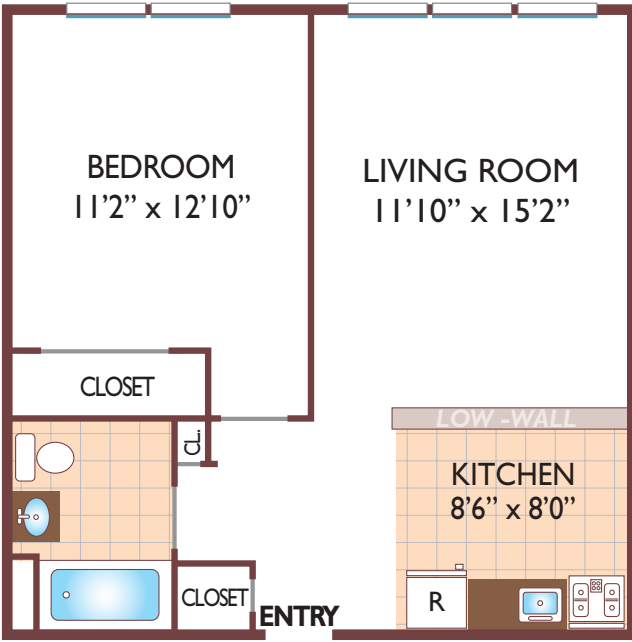
We are an equal opportunity provider. We do not discriminate on the basis of race, color, sex, national origin, religion, handicap or familial status.



# Cambridge Manor

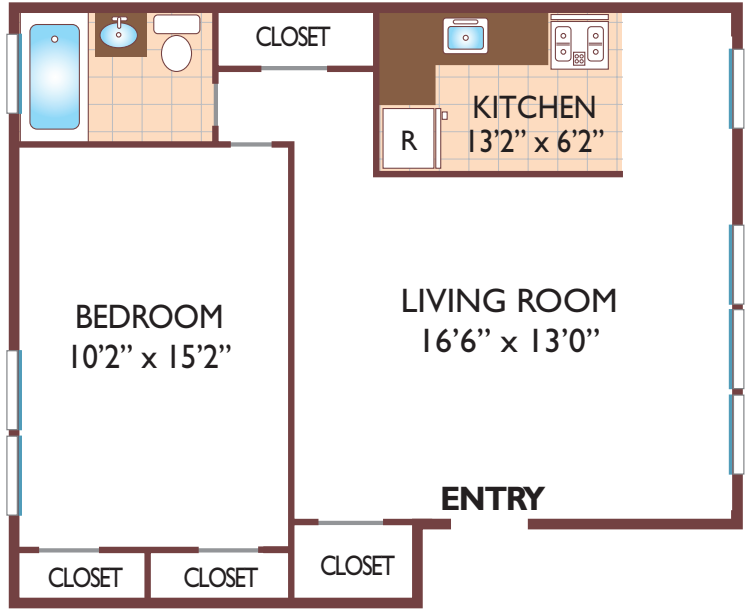
**One Bedroom Floor Plan**  
with 1 Bath, 560 sq. ft.

**CCP & Harwood**



**One Bedroom Floor Plan**  
Deluxe Unit  
with 1 Bath, 615 sq. ft.

**Makor**



**Two Bedroom Floor Plan**  
Deluxe Unit  
with 1 Bath, 925 sq. ft.

**CCP & Harwood**



All dimensions, positions, locations and details are approximate.  
All rent prices and community information subject to change.

