

COUNTRY CLUB VILLAGE

LEASING OFFICE

908.543.4511
CountryClubVillageNJ.com

320 Country Club Lane
Scotch Plains, NJ 07076



COUNTRY CLUB VILLAGE

SPACIOUS HOMES | CONVENIENT LOCATION

Welcome to Country Club Village, a premier rental community in Scotch Plains, Union County, NJ. Our 318 meticulously appointed townhomes and apartments offer the perfect blend of comfort and convenience, with spacious one- and two-bedroom residences ranging from 910 to 1,315 square feet. Each home features an eat-in kitchen, private patio or balcony, and resident-controlled central air and heat. Enjoy our smoke-free, pet-friendly environment in a quiet, park-like setting. Amenities include onsite laundry, ample parking, a basketball court, and 24-hour emergency maintenance. With easy access to the Garden State Parkway, public transportation, and top-rated schools with bus pick-up, Country Club Village provides an ideal, convenient suburban lifestyle.

Country Club Village offers a stunning selection of spacious one- and two-bedroom rental residences. Find the perfect floor plan to fit your lifestyle.



8.6.24

All renderings, amenities, existing or future views and photos depicted or otherwise described herein are proposed and conceptual only, and are based upon preliminary development plans, which are subject to withdrawal, revisions, and other changes, without notice. Please inquire within for more details.



Country Club Village

Bedrooms	Name	Baths	Area	Pricing
1	One Bedroom	1	910 sq. ft.	\$2,099 - \$2,249
2	Two Bedroom Townhome	1.5	1,315 sq. ft.	\$2,880 - \$3,055

*All prices are subject to change.

Apartment Amenities

- Eat-In Kitchen
- Private Patio or Balcony
- Resident Controlled Central Air & Heat

Community Amenities

- 24-Hour Emergency Maintenance
- Easy Access To NYC Transportation
- Security Lighting
- Verizon FIOS Available
- Basketball Court(s)
- Laundry Facilities
- Smoke-Free Community
- XFINITY Available
- Cable Ready
- Natural Gas
- Top Rated Scotch Plains Public School System

Appliances

- Dishwasher
- Oven/Range
- Range Hood
- Refrigerator/Freezer
- Washer/Dryer in Select Townhomes

Visit our Website - www.CountryClubVillageNJ.com

Rental Office Hours

Monday 10-5	Tuesday 10-5	Wednesday 10-5	Thursday 10-5	Friday 10-5	Saturday 10-5	Sunday 10-5
----------------	-----------------	-------------------	------------------	----------------	------------------	----------------

When you decide to rent with Garden Communities, the following items will be required when you submit your application:

- Non-refundable online application processing Fee. \$85 per applicant
- An online deposit of \$200 in order to reserve an apartment. This amount will be applied to your first month's rent upon approval and ONLY refunded if your application is declined.
- A valid photo ID and social security card.

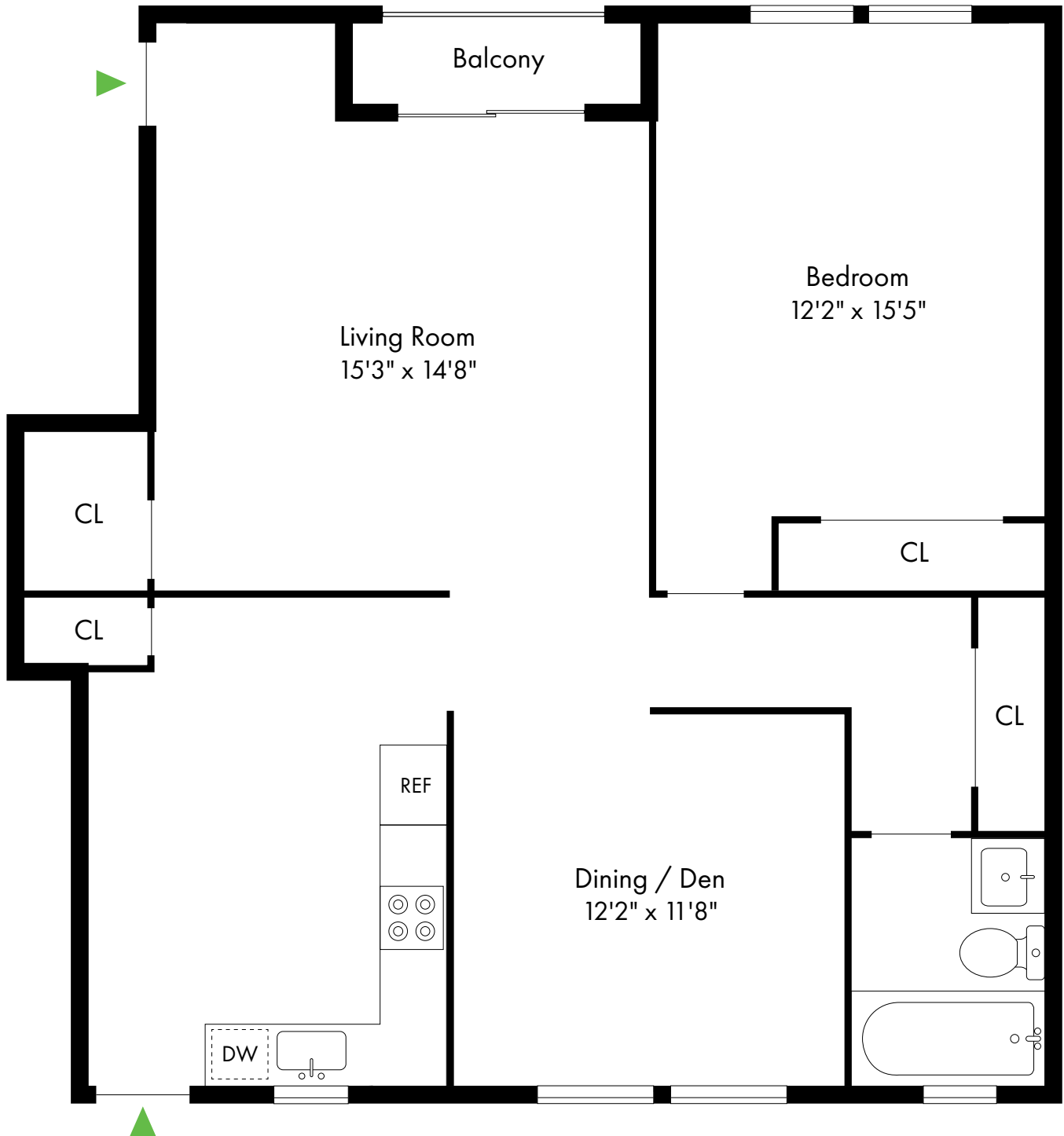
We are an equal opportunity provider. We do not discriminate on the basis of race, color, sex, national origin, religion, handicap or familial status.

Country Club Village

Scotch Plains, NJ

One Bedroom

1 Bed, 1 Bath | 910 SF



908.233.6393

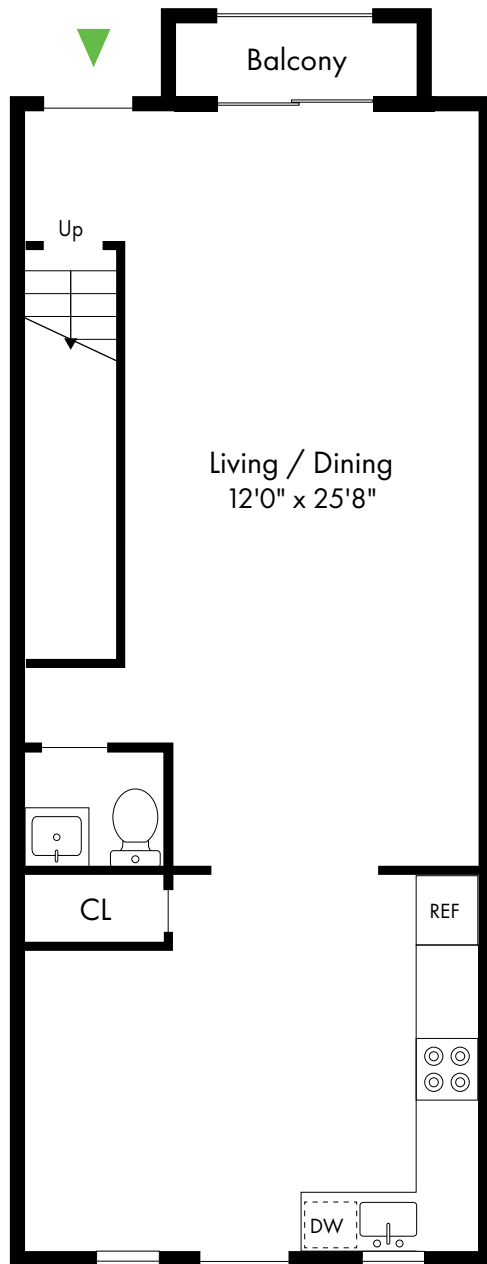
www.CountryClubVillageNJ.com

Country Club Village

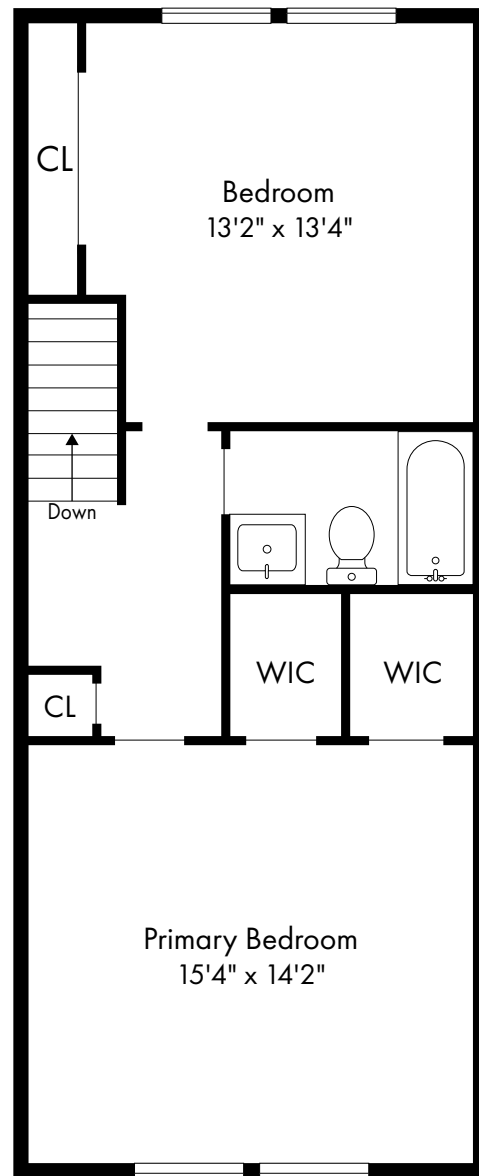
Scotch Plains, NJ

Two Bedroom Townhome

2 Bed, 1.5 Bath | 1,315 SF



First Floor



Second Floor