

COUNTRY CLUB VILLAGE

320 Country Club Lane, Scotch Plains, NJ 07076 (908) 543 - 4511



Country Club Village is situated in the quaint Union County town of Scotch Plains. The community's well-appointed homes offer spacious interiors with either one or two bedrooms and range in size from 910 to 1315 square feet. Each unit also boasts central air-conditioning, refrigerator, dishwasher, and balcony or patio (per plan). Country Club Village's residents enjoy the convenience of onsite laundry facilities, 24-hour emergency maintenance, ample parking and easy access to the Garden State Parkway and public transportation. Those with school-age children will benefit from the area's top-rated school system which offers bus pick-up at the complex.

www.CountryClubVillageNJ.com (908) 543 - 4511



WE ARE AN EQUAL HOUSING OPPORTUNITY PROVIDER. WE DO NOT DISCRIMINATE ON THE BASIS OF RACE, COLOR, SEX, NATIONAL ORIGIN, RELIGION, HANDICAP OR FAMILIAL STATUS.

WF-CountryClub052716



Country Club Village North

Bedrooms	Name	Baths	Area	Pricing
1	One Bedroom	1	960 sq. ft.	\$2,179 - \$2,329
1	One Bedroom with Basement	1	960 sq. ft.	\$2,354 - \$2,504

*All prices are subject to change.

Apartment Amenities

- Eat-In Kitchen
- Washer/Dryer in Every Home
- Private Patio or Balcony
- Resident Controlled Central Air & Heat

Community Amenities

- 24-Hour Emergency Maintenance
- Easy Access To NYC Transportation
- Smoke-Free Community
- Basketball Court(s)
- Natural Gas
- Top Rated Scotch Plains Public School System
- Cable Ready
- Security Lighting
- Verizon FIOS Available

Appliances

- Oven/Range
- Washer & Dryer in Apartment
- Range Hood
- Refrigerator/Freezer

Visit our Website - www.CountryClubVillageNorthNJ.com

Rental Office Hours

Monday 10-5	Tuesday 10-5	Wednesday 10-5	Thursday 10-5	Friday 10-5	Saturday 10-5	Sunday 10-5
----------------	-----------------	-------------------	------------------	----------------	------------------	----------------

When you decide to rent with Garden Communities, the following items will be required when you submit your application:

- Non-refundable online application processing Fee. \$85 per applicant
- An online deposit of \$200 in order to reserve an apartment. This amount will be applied to your first month's rent upon approval and ONLY refunded if your application is declined.
- A valid photo ID and social security card.

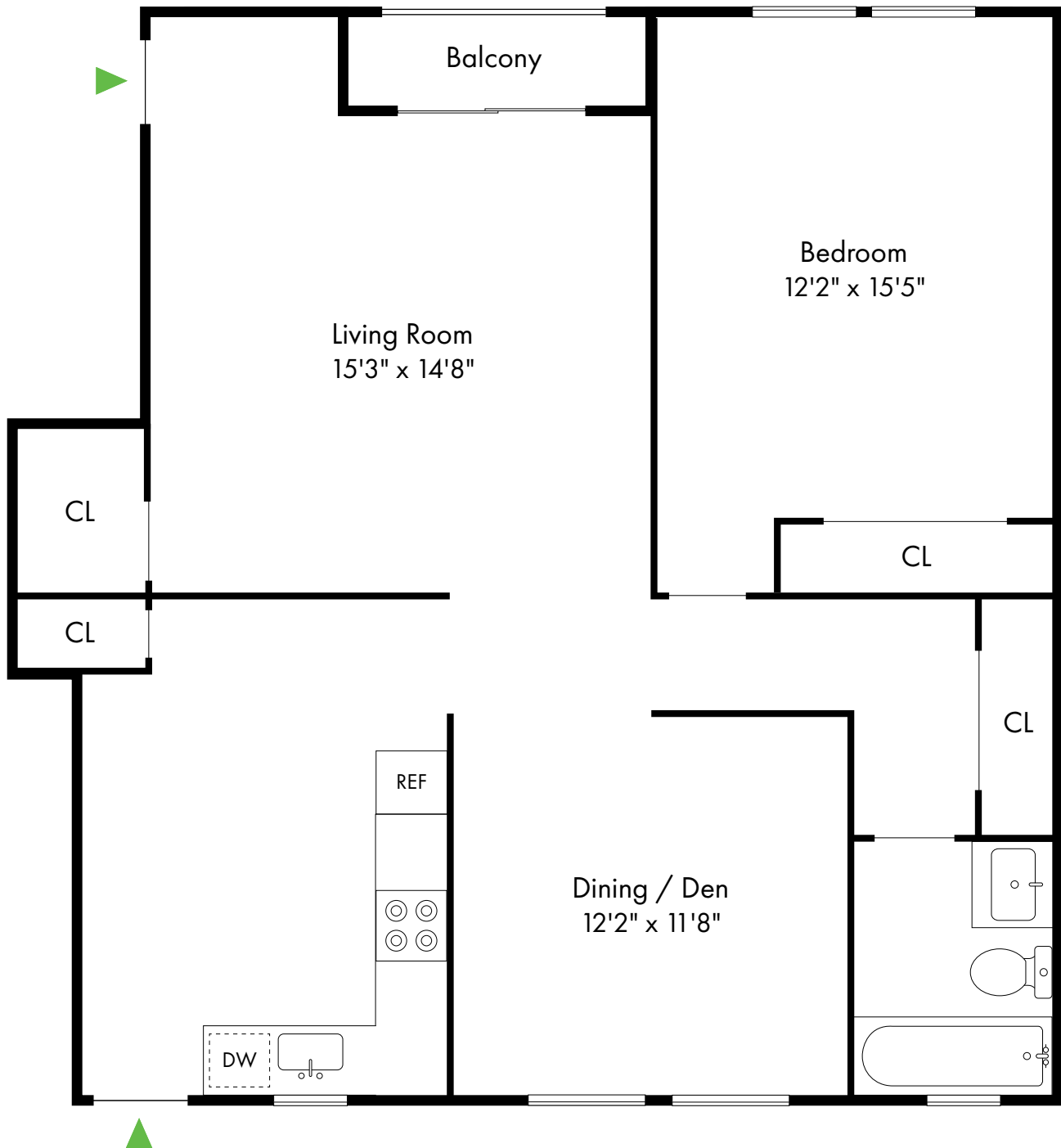
We are an equal opportunity provider. We do not discriminate on the basis of race, color, sex, national origin, religion, handicap or familial status.

Country Club Village North

Scotch Plains, NJ

One Bedroom

1 Bed, 1 Bath | 960 SF



908.233.6393

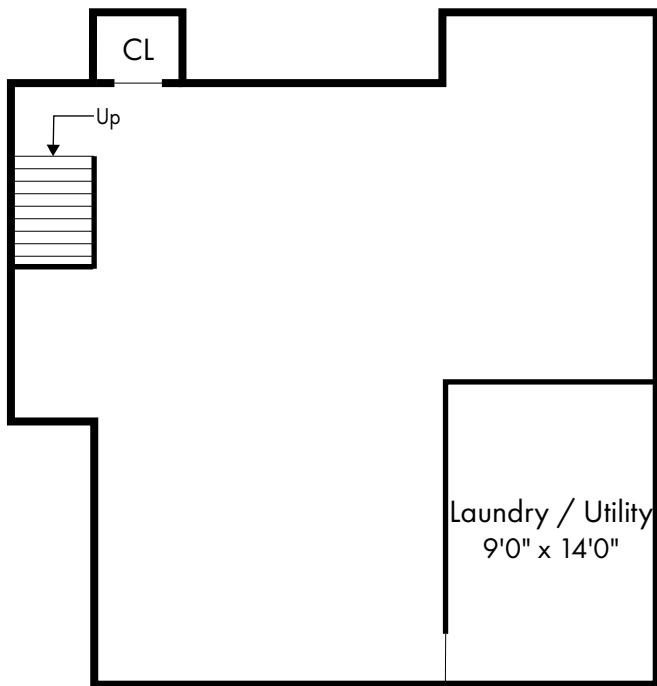
www.CountryClubVillageNorthNJ.com

Country Club Village North

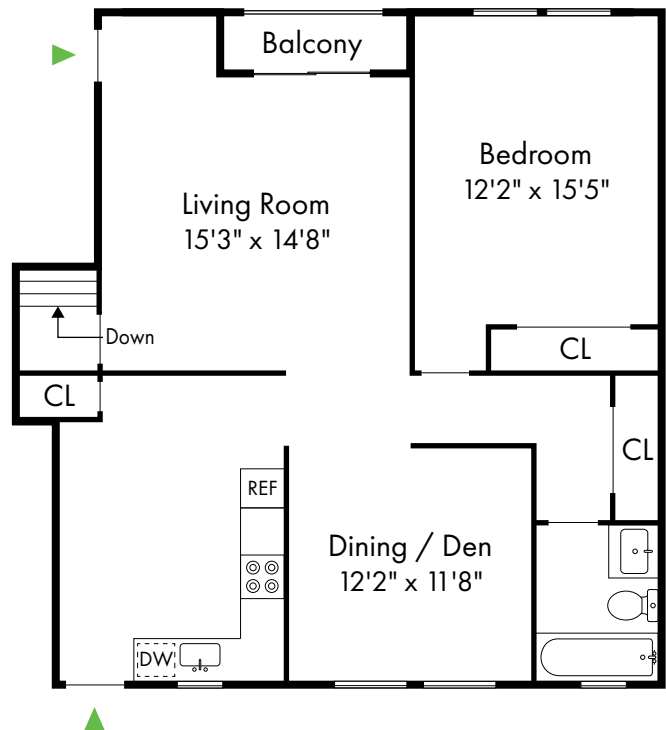
Scotch Plains, NJ

One Bedroom With Basement

1 Bed, 1 Bath | 960 SF



Basement



First Floor