

# CROWN COURT

## LEASING OFFICE

908.280.1974  
CrownCourtNJ.com

1 Monarch Circle  
Basking Ridge, NJ 07920



# CROWN COURT

## SPACIOUS HOMES | CONVENIENT LOCATION

Whether you choose between a one- or two-bedroom apartment, a townhome with a private driveway and garage, or a newly constructed apartment in Crown Court Phase II, all our layouts are designed to meet the needs of modern living. Our residences offer ample room for a den, home office, or children's playroom. Upgraded fixtures and luxurious finishes include stone countertops in an eat-in kitchen, ample closet space, in-suite washer and dryer, and central air conditioning and heating. Select residences feature a fireplace, stainless steel appliances, finished basements, and/or walk-in closets. Plus, our community is pet-friendly, so your furry friends are welcome to join you in your new home!

**Crown Court offers a stunning selection of spacious one- and two-bedroom rental residences. Find the perfect floor plan to fit your lifestyle.**



All renderings, amenities, existing or future views and photos depicted or otherwise described herein are proposed and conceptual only, and are based upon preliminary development plans, which are subject to withdrawal, revisions, and other changes, without notice. Please inquire within for more details.

2.9.24

# Crown Court

Bedrooms	Name	Baths	Area	Pricing
1	One Bedroom w/Basement	1.5	900 sq. ft.	\$2,455
1	1A - Phase II	1	1,045 sq. ft.	\$2,499
1	1B - Phase II	1	1,152 sq. ft.	\$2,674
2	Two Bedroom	2	1,535-1,675 sq. ft.	\$2,855 - \$2,950
2	2D - Phase II	2	1,257 sq. ft.	\$3,150
2	2C - Phase II	2	1,424 sq. ft.	\$3,220
2	Townhome with Den	2.5	1,750 sq. ft.	\$4,225
2	2B - Phase II	2	1,492 sq. ft.	\$3,250

\*All prices are subject to change.

## Apartment Amenities

- Carpeted Bedrooms (select apartments)
- Finished Basements (select models)
- Quartz countertops in select apartments
- Stainless Steel Appliances (Select Apartments)
- Washer and Dryer in Apartment (Select Apartments)
- Central Air Conditioning and Heating
- Fireplace (select models)
- Renovated Apartments
- Stone Countertops
- Eat-In Kitchen
- Luxury Vinyl Tile (LVT) (select apartments)
- Reserved Parking in Select Buildings
- Townhomes with Garage Parking

## Community Amenities

- 24-Hour Emergency Maintenance
- Gazebo
- Playground
- Cable Ready
- Optimum Available
- Smoke-Free Community
- Footpath/Nature Trail
- Park-Like Setting
- Verizon FIOS Available

## Appliances

- Dishwasher
- Refrigerator/Freezer
- Oven/Range
- Washer & Dryer in Apartment
- Range Hood

**Visit our Website - [www.CrownCourtNJ.com](http://www.CrownCourtNJ.com)**

## Rental Office Hours

Monday 8 - 5	Tuesday 8 - 5	Wednesday 8 - 5	Thursday 8 - 5	Friday 8 - 5	Saturday 10 - 4	Sunday 10-4
-----------------	------------------	--------------------	-------------------	-----------------	--------------------	----------------

When you decide to rent with Garden Communities, the following items will be required when you submit your application:

- Non-refundable online application processing Fee. \$85 per applicant
- An online deposit of \$500 in order to reserve an apartment. This amount will be applied to your first month's rent upon approval and ONLY refunded if your application is declined.
- A valid photo ID and social security card

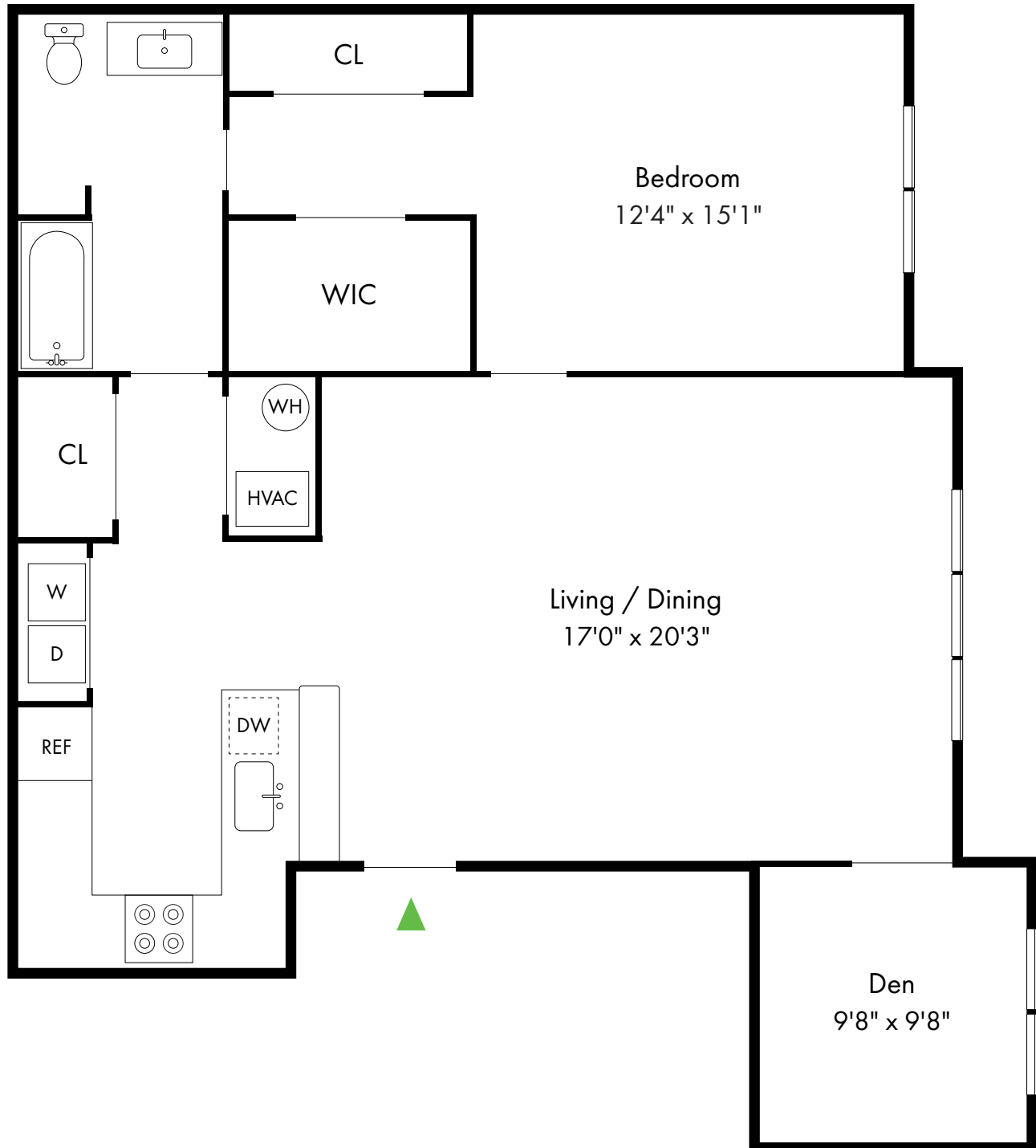
We are an equal opportunity provider. We do not discriminate on the basis of race, color, sex, national origin, religion, handicap or familial status.

# Crown Court

1B - Phase II

Basking Ridge, NJ

1 Bed, 1 Bath with Den | 1,151 SF



# Crown Court

1A - Phase II

Basking Ridge, NJ

1 Bed, 1 Bath | 1,045 SF



# Crown Court

Basking Ridge, NJ

2B - Phase II

2 Bed, 2 Bath | 1,492 SF

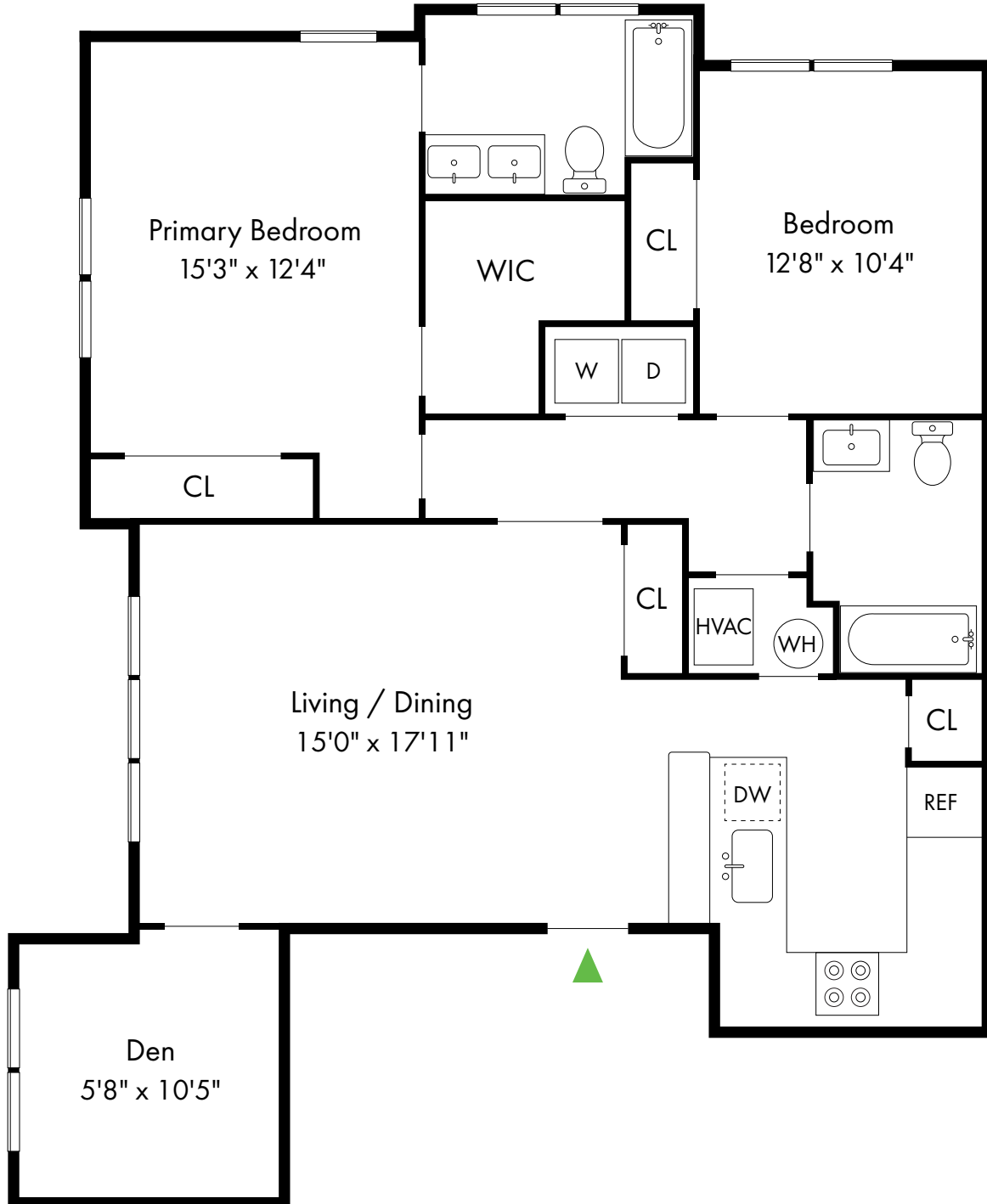


# Crown Court

2D - Phase II

Basking Ridge, NJ

2 Bed, 2 Bath with Den | 1,275 SF

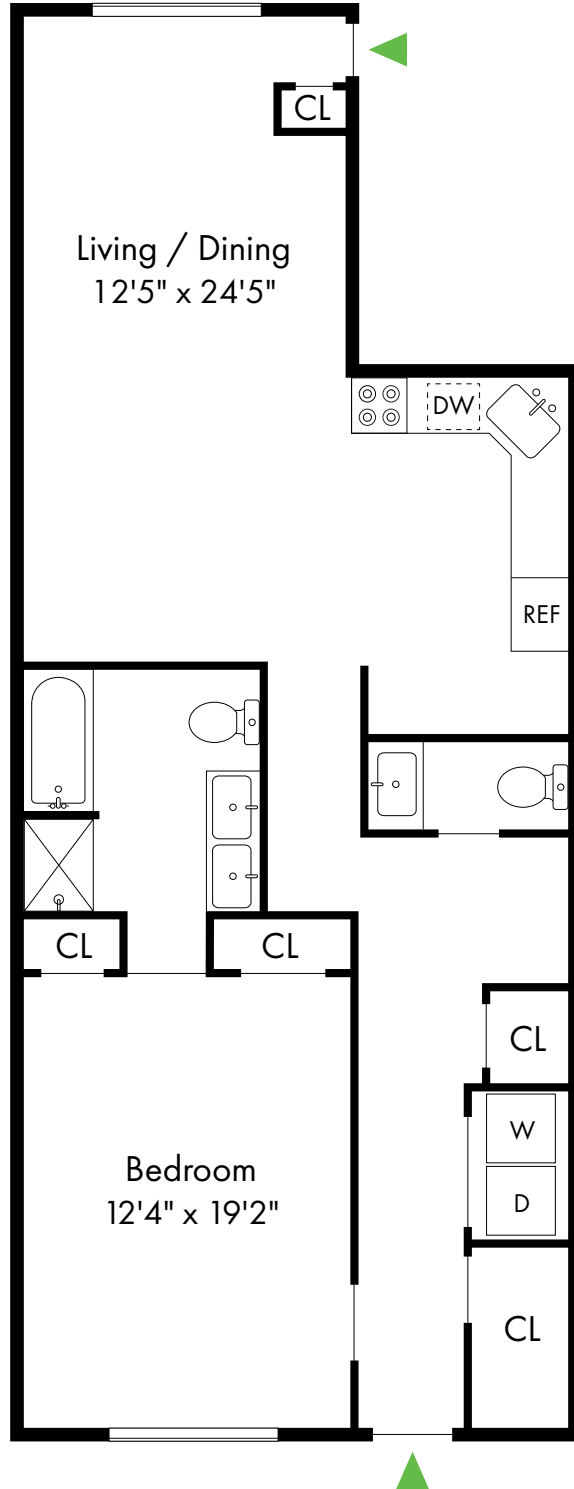


# Crown Court

Basking Ridge, NJ

One Bedroom with Basement

1 Bed, 1.5 Bath | 900 SF



908.213.5343

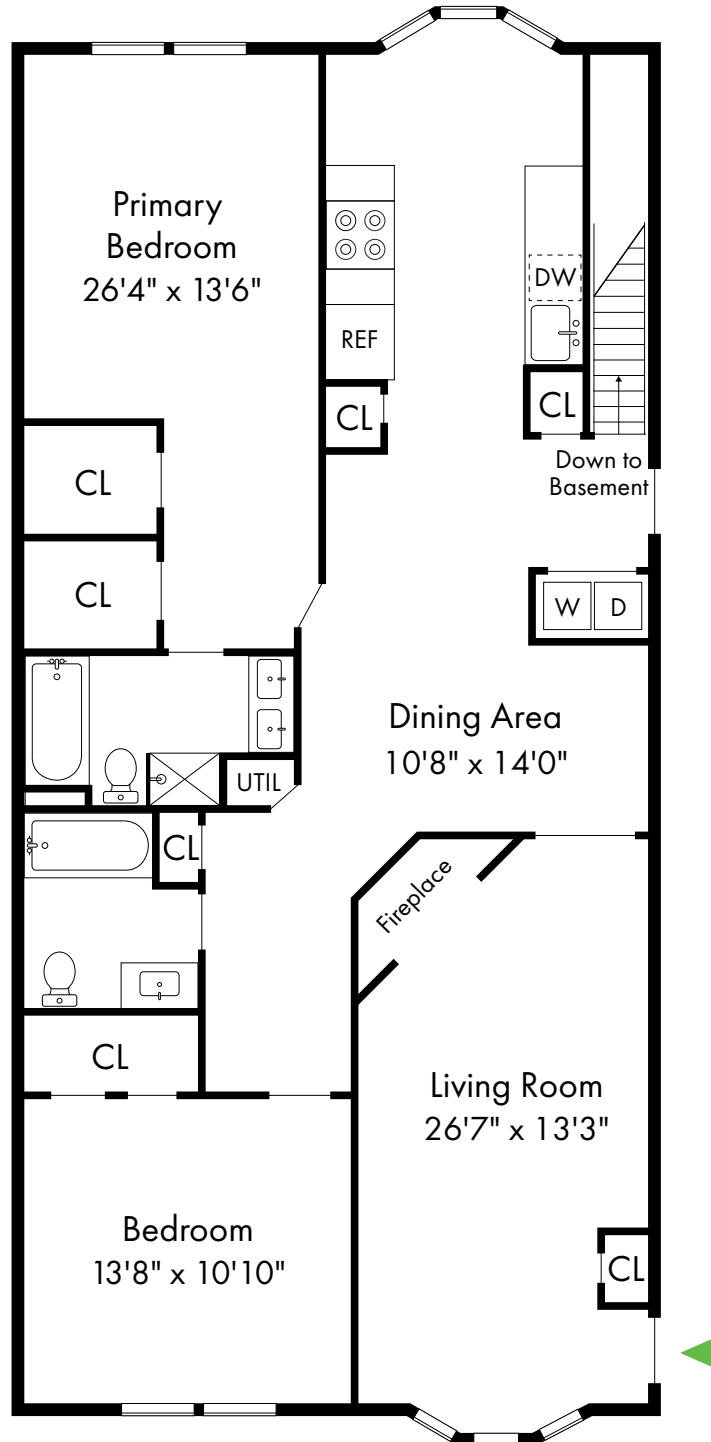
[www.CrownCourtNJ.com](http://www.CrownCourtNJ.com)

# Crown Court

Two Bedroom

Basking Ridge, NJ

2 Bed, 2 Bath | 1,535 - 1,675 SF



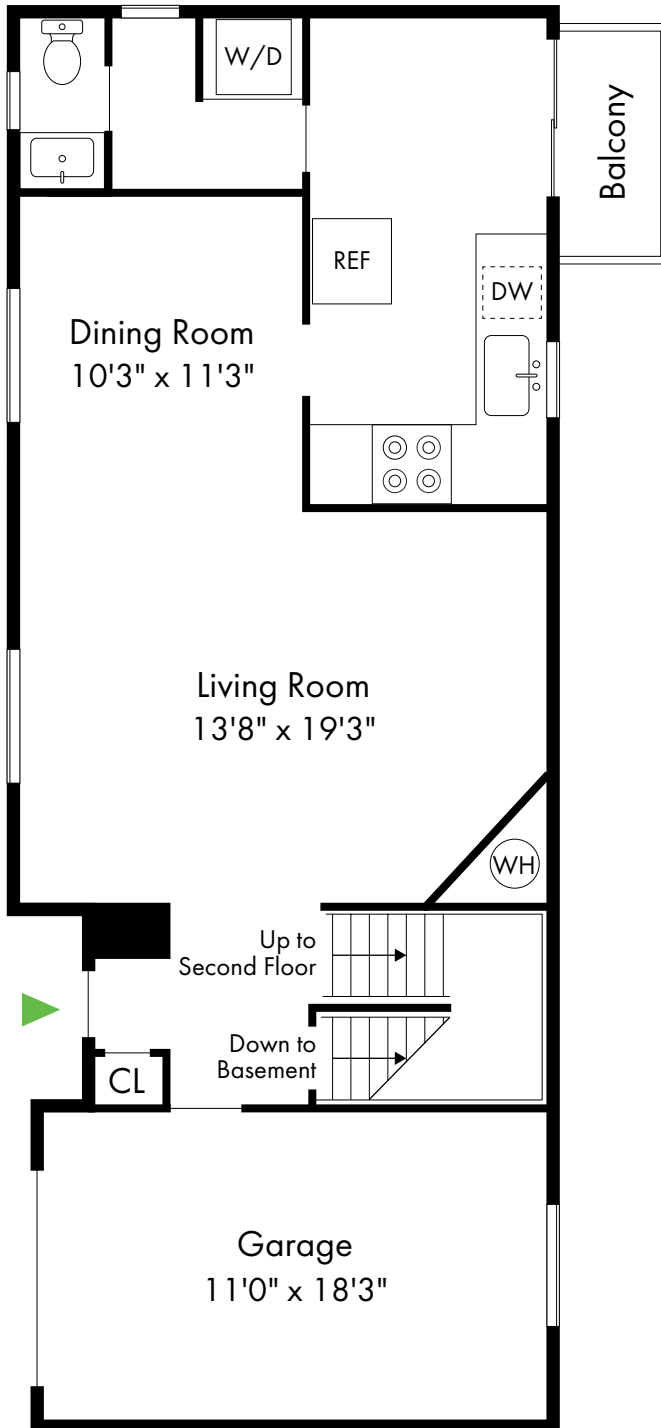


# Crown Court

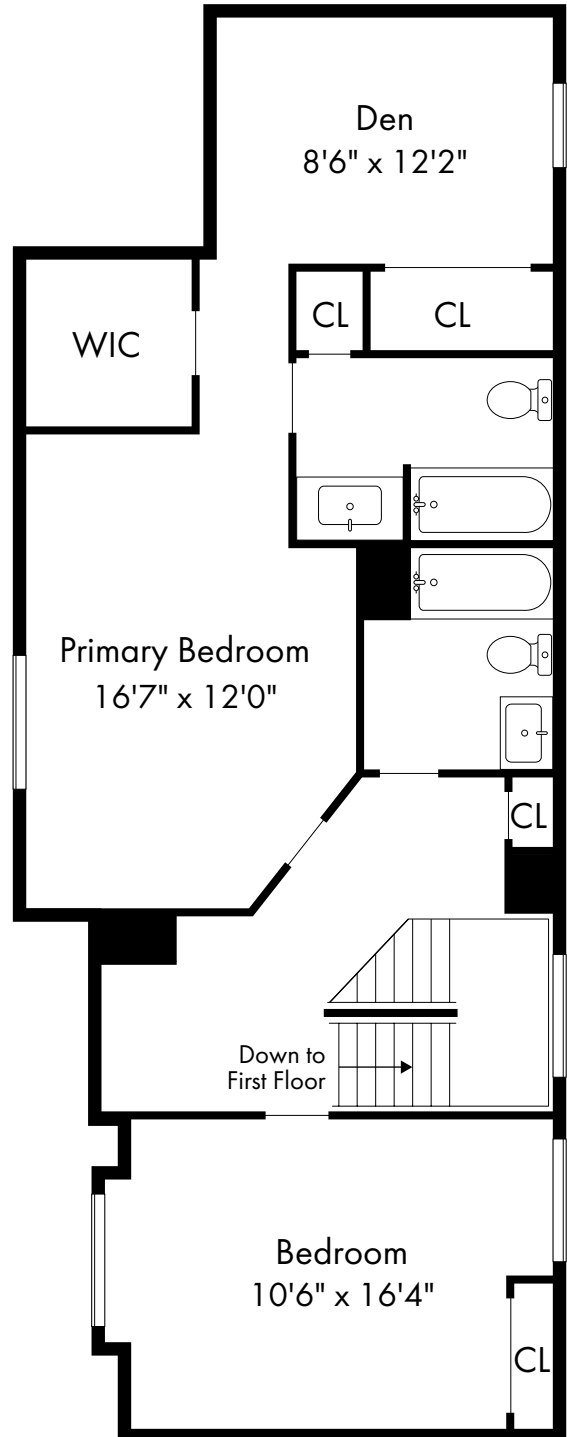
Basking Ridge, NJ

Townhome with Den

2 Bed, 2.5 Bath | 1,750 SF



First Floor



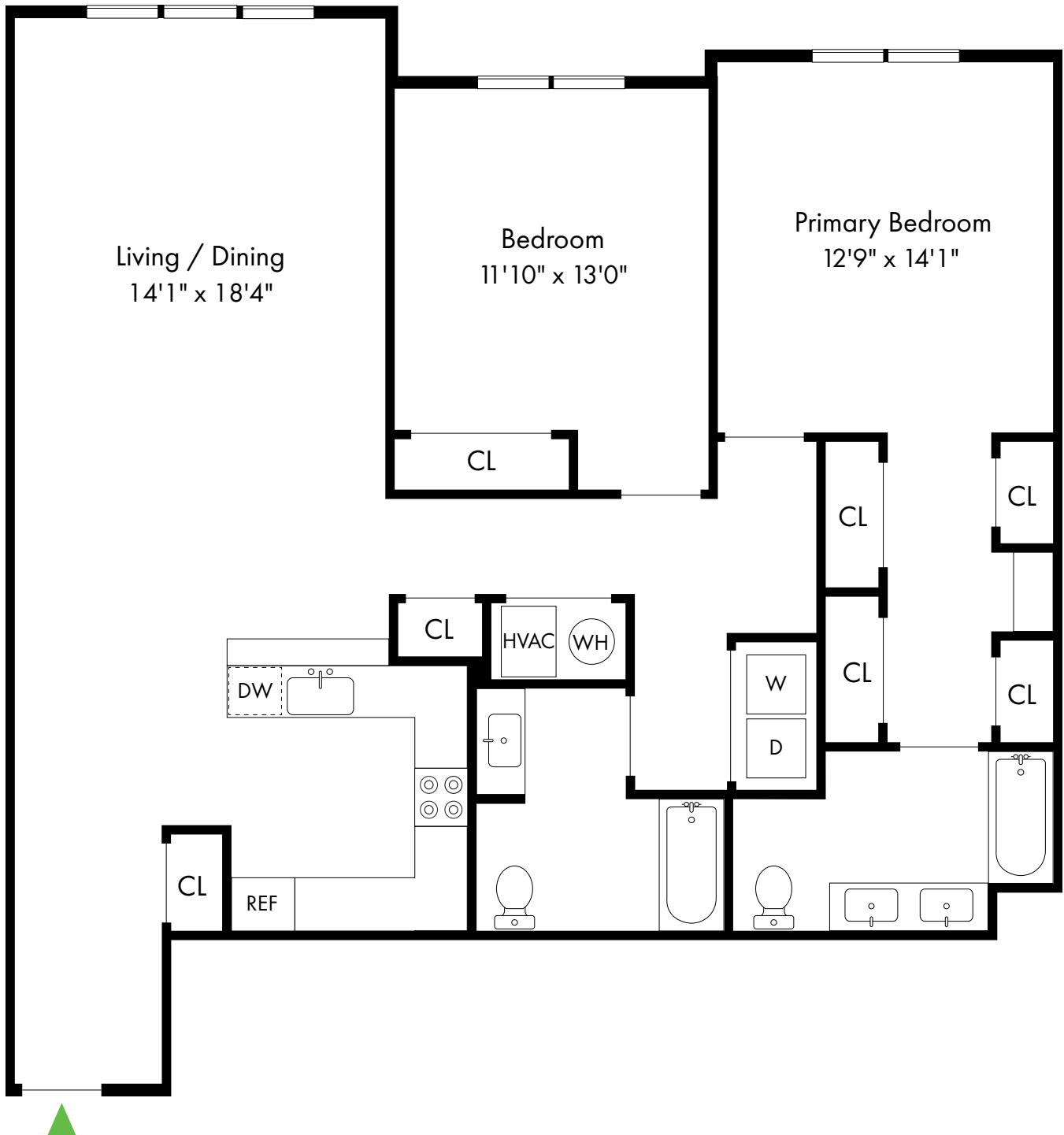
Second Floor

# Crown Court

2C - Phase II

Basking Ridge, NJ

2 Bed, 2 Bath | 1,424 SF



908.213.5343

[www.CrownCourtNJ.com](http://www.CrownCourtNJ.com)