

CYPRESS GARDENS

LEASING OFFICE

908.336.1300
CypressGardensNJ.com

1165 Route 22 West #173
North Plainfield, NJ 07060



CYPRESS GARDENS

SPACIOUS HOMES | CONVENIENT LOCATION

Welcome to Cypress Gardens, a garden-style apartment community boasting 214 rental residences in North Plainfield, NJ. Offering spacious layouts from 850 to 1,075 square feet, each apartment features hardwood floors, refrigerators and ovens, and versatile space ideal for a home office or play area. Cypress Gardens provides everything you need, including a refreshing swimming pool, on-site laundry, garages, and 24-hour emergency maintenance. With convenient access to public transportation, it's a great fit for commuters. Pet-friendly and designed for comfort and convenience, Cypress Gardens has the ideal home waiting for you.

Cypress Gardens offers a stunning selection of spacious one- and two-bedroom rental residences. Find the perfect floor plan to fit your lifestyle.



All renderings, amenities, existing or future views and photos depicted or otherwise described herein are proposed and conceptual only, and are based upon preliminary development plans, which are subject to withdrawal, revisions, and other changes, without notice. Please inquire within for more details.

1.23.25

Cypress Gardens

Bedrooms	Name	Baths	Area	Pricing
1	One Bedroom	1	850 sq. ft.	\$1,925 - \$1,975
2	Two Bedroom	1	1,075 sq. ft.	\$2,485 - \$2,535

*All prices are subject to change.

Apartment Amenities

- Air Conditioning
- Garages Available

Community Amenities

- 24-Hour Emergency Maintenance
- Natural Gas
- Security Lighting
- Cable Ready
- Pet-Friendly
- Swimming Pool
- Laundry Facilities
- Public Transit Nearby

Appliances

- Oven/Range
- Range Hood
- Refrigerator/Freezer

Visit our Website - www.CypressGardensNJ.com

Rental Office Hours

Monday 9-5	Tuesday 9-5	Wednesday 9-5	Thursday 9-5	Friday 9-5	Saturday 10-5	Sunday 9 - 3
---------------	----------------	------------------	-----------------	---------------	------------------	-----------------

When you decide to rent with Garden Communities, the following items will be required when you submit your application:

- Non-refundable online application processing Fee. \$75 per applicant
- An online deposit of \$200 in order to reserve an apartment. This amount will be applied to your first month's rent upon approval and ONLY refunded if your application is declined.
- A valid photo ID, social security card and two current pay stubs.

We are an equal opportunity provider. We do not discriminate on the basis of race, color, sex, national origin, religion, handicap or familial status.



Cypress Gardens

One Bedroom Floor Plan

Ground Level

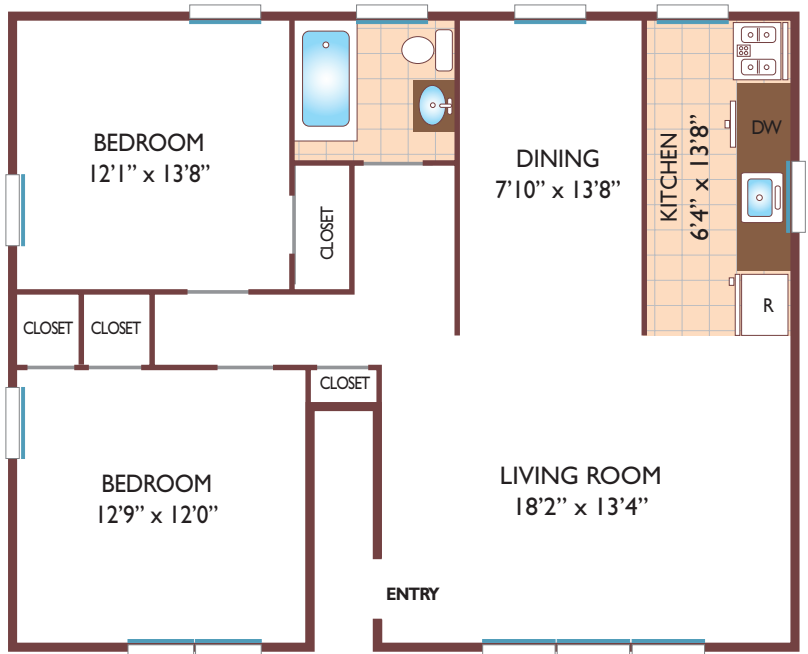
with 1 Bath, 850 sq. ft.



Two Bedroom Floor Plan

Ground Level

with 1 Bath, 1075 sq. ft.



All dimensions, positions, locations and details are approximate.

All rent prices and community information subject to change.

