

EVERGREEN MEADOWS

208 White Birch Road, Edison, NJ 08837 (732) 898-1474



Evergreen Meadows is a charming garden apartment complex rising in the Middlesex County Township of Edison. The community boasts 336 one or two bedroom units that range in size from 870 to 1,260 square feet of living space. Each residence features an eat-in kitchen with dishwasher, oven, air conditioner, walk-in closets and patio or balcony. Emergency 24-hour maintenance is available as an added convenience.

www.EvergreenMeadowsNJ.com (732) 898-1474



WE ARE AN EQUAL HOUSING OPPORTUNITY PROVIDER. WE DO NOT DISCRIMINATE ON THE BASIS OF RACE, COLOR, SEX, NATIONAL ORIGIN, RELIGION, HANDICAP OR FAMILIAL STATUS.

WF-Evergreen103019



Evergreen Meadows

Bedrooms	Name	Baths	Area	Pricing
1	D-1	1	760-870 sq. ft.	\$1,990 - \$2,040
1	B	1	870 sq. ft.	\$2,060
1	C-1	1	935 sq. ft.	\$2,070
1	One Bedroom Den TownHome	1.5	1,260 sq. ft.	\$2,255 - \$2,405
2	Two Bedroom Den TownHome	1.5	1,185 sq. ft.	\$3,130
2	D-2	1	1,195 sq. ft.	\$2,940
2	C-2	1.5	1,260 sq. ft.	\$2,915 - \$2,965

*All prices are subject to change.

Apartment Amenities

- Air Conditioning
- Eat-In Kitchen
- Private Patio or Balcony

Community Amenities

- 24-Hour Emergency Maintenance
- Cable Ready
- Easy Access To NYC Transportation
- Electric Vehicle Charging Stations
- Laundry Facilities
- Public Transportation
- Security Lighting

Appliances

- Dishwasher
- Oven/Range
- Range Hood
- Refrigerator/Freezer
- Washer/Dryer in Select Townhomes

Visit our Website - www.EvergreenMeadowsNJ.com

Rental Office Hours

Monday 8-4	Tuesday 8-4	Wednesday 8-4	Thursday 8-4	Friday 8-4	Saturday 10-4	Sunday 10-4
---------------	----------------	------------------	-----------------	---------------	------------------	----------------

When you decide to rent with Garden Communities, the following items will be required when you submit your application:

- Non-refundable online application processing Fee. \$85 per applicant
- An online deposit of \$500 in order to reserve an apartment. This amount will be applied to your first month's rent upon approval and ONLY refunded if your application is declined.
- A valid photo ID, social security card and two current pay stubs.

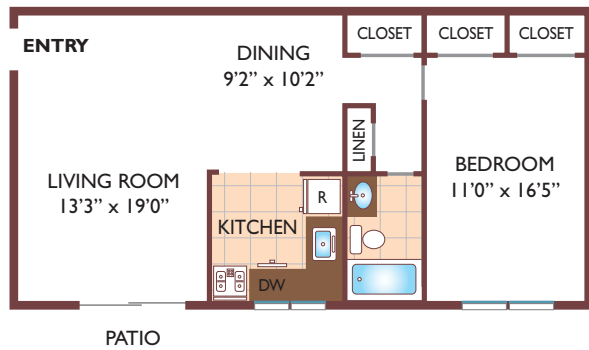
We are an equal opportunity provider. We do not discriminate on the basis of race, color, sex, national origin, religion, handicap or familial status.

Evergreen Meadows

One Bedroom Floor Plan

Unit D-1

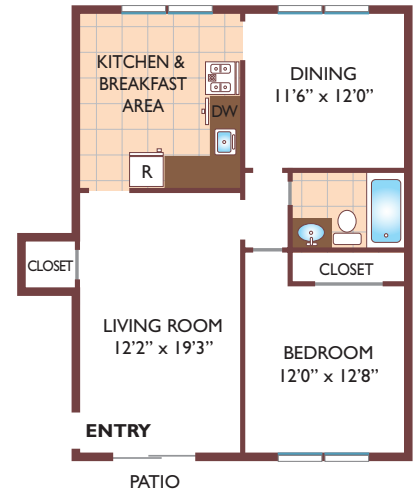
with 1 Bath, 760 sq. ft.



One Bedroom Floor Plan

Unit B

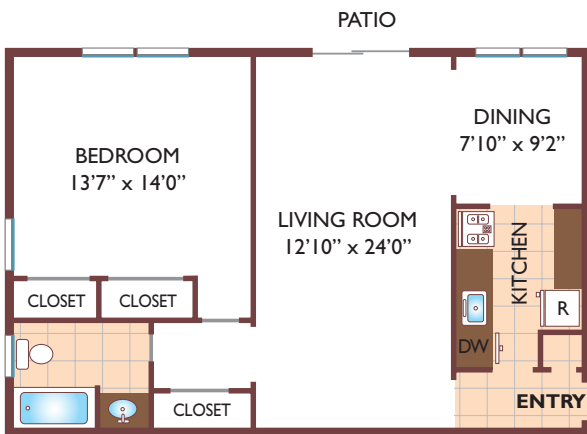
with 1 Bath, 870 sq. ft.



One Bedroom Floor Plan

Unit C-1

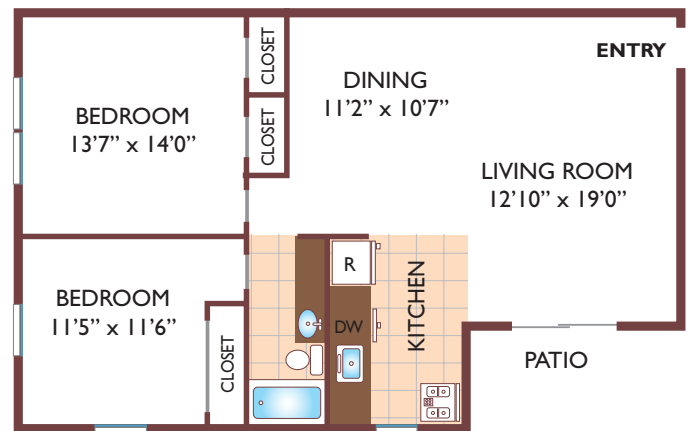
with 1 Bath, 935 sq. ft.



Two Bedroom Floor Plan

Unit D-2

with 1 Bath, 1195 sq. ft.



All dimensions, positions, locations and details are approximate.

All rent prices and community information subject to change.

Evergreen Meadows

Two Bedroom Floor Plan

Unit C-2

with 1 Bath, 1260 sq. ft.



One Bedroom Floor Plan

Townhome with Den

with 1.5 Baths, 1260 sq. ft.



Two Bedroom Floor Plan

Townhome with Den

with Den & 1.5 Baths, 1185 sq. ft.



All dimensions, positions, locations and details are approximate.

All rent prices and community information subject to change.