

FOREST PARK VILLAGE

LEASING OFFICE

908.320.8116
ForestParkVillageNJ.com

519 Park Avenue
Scotch Plains, NJ 07076



FOREST PARK VILLAGE

SPACIOUS HOMES | CONVENIENT LOCATION

Discover Forest Park Village, an intimate apartment community in Scotch Plains, NJ. Our 35 spacious 1- and 2-bedroom residences, ranging from 830 to 1,765 square feet, are perfect for home offices or play areas. Enjoy eat-in kitchens, private patios or balconies, resident-controlled central air and heat, and in-suite washers and dryers. Select apartments feature newly renovated interiors. Our pet-friendly, smoke-free community offers easy access to NYC transportation and Scotch Plains' top-rated schools. With 24-hour emergency maintenance, you can live worry-free. Welcome to Forest Park Village—where comfort meets convenience.

Forest Park Village offers a stunning selection of spacious one- and two-bedroom rental residences. Find the perfect floor plan to fit your lifestyle.



All renderings, amenities, existing or future views and photos depicted or otherwise described herein are proposed and conceptual only, and are based upon preliminary development plans, which are subject to withdrawal, revisions, and other changes, without notice. Please inquire within for more details.

5.7.25

Forest Park Village

Bedrooms	Name	Baths	Area	Pricing
1	1 Bedroom	1	830 sq. ft.	\$2,525 - \$2,675
2	Townhome	2.5	1,765 sq. ft.	\$3,240

*All prices are subject to change.

Apartment Amenities

- Eat-In Kitchen
- Resident Controlled Central Air & Heat
- Newly Renovated Interiors (select apartments)
- Private Patio or Balcony

Community Amenities

- 24-Hour Emergency Maintenance
- Natural Gas
- Top Rated Scotch Plains Public School System
- Cable Ready
- Security Lighting
- Easy Access To NYC Transportation
- Smoke-Free Community

Appliances

- Dishwasher
- Refrigerator/Freezer
- Oven/Range
- Range Hood

Visit our Website - www.ForestParkVillageNJ.com

Rental Office Hours

Monday 10-5	Tuesday 10-5	Wednesday 10-5	Thursday 10-5	Friday 10-5	Saturday 10-5	Sunday 10-5
----------------	-----------------	-------------------	------------------	----------------	------------------	----------------

When you decide to rent with Garden Communities, the following items will be required when you submit your application:

- Non-refundable online application processing Fee. \$50 per applicant
- An online deposit of \$200 in order to reserve an apartment. This amount will be applied to your first month's rent upon approval and ONLY refunded if your application is declined.
- A valid photo ID, social security card and two current pay stubs.

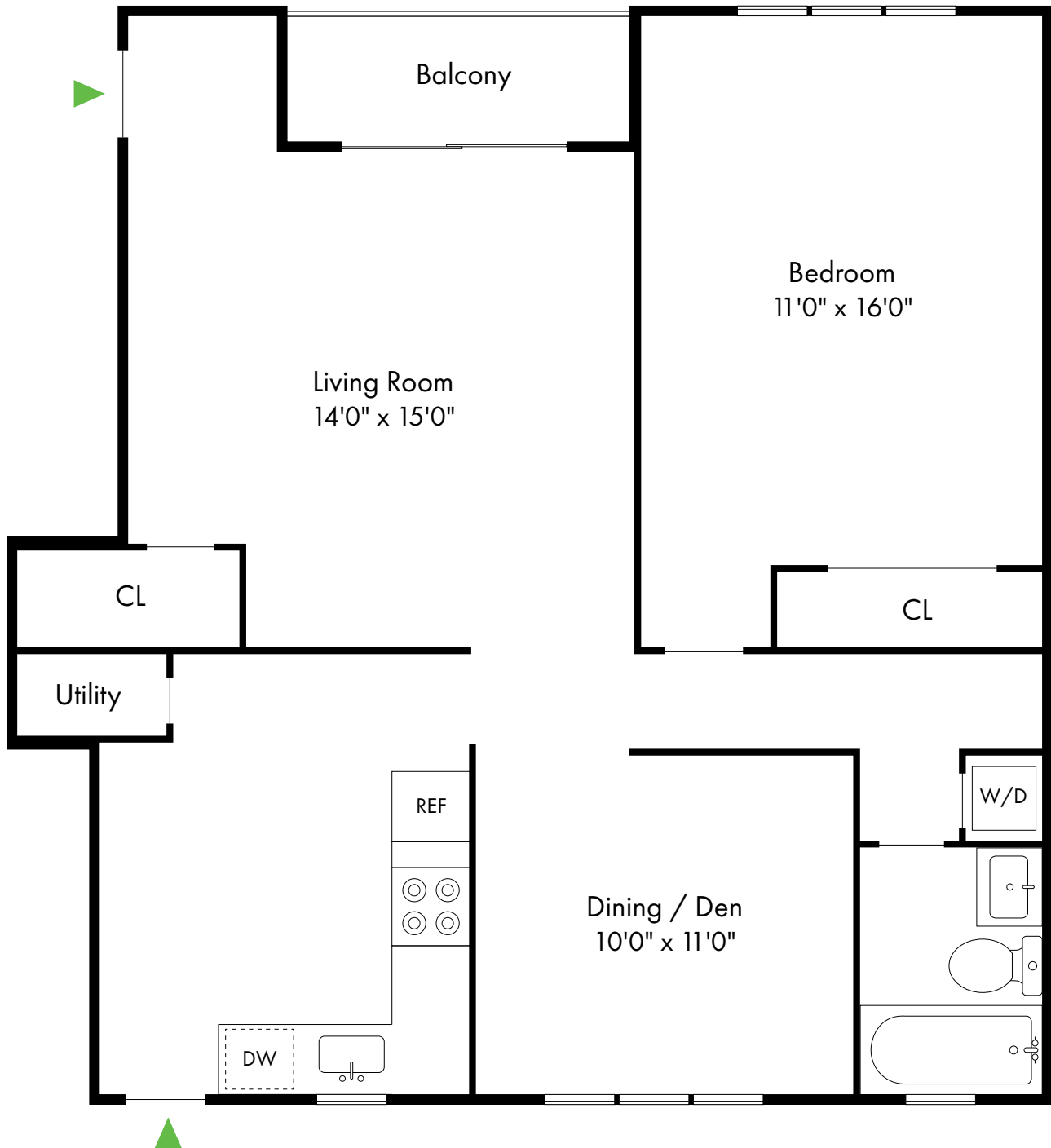
We are an equal opportunity provider. We do not discriminate on the basis of race, color, sex, national origin, religion, handicap or familial status.

Forest Park Village

Scotch Plains, NJ

One Bedroom

1 Bed, 1 Bath | 830 SF

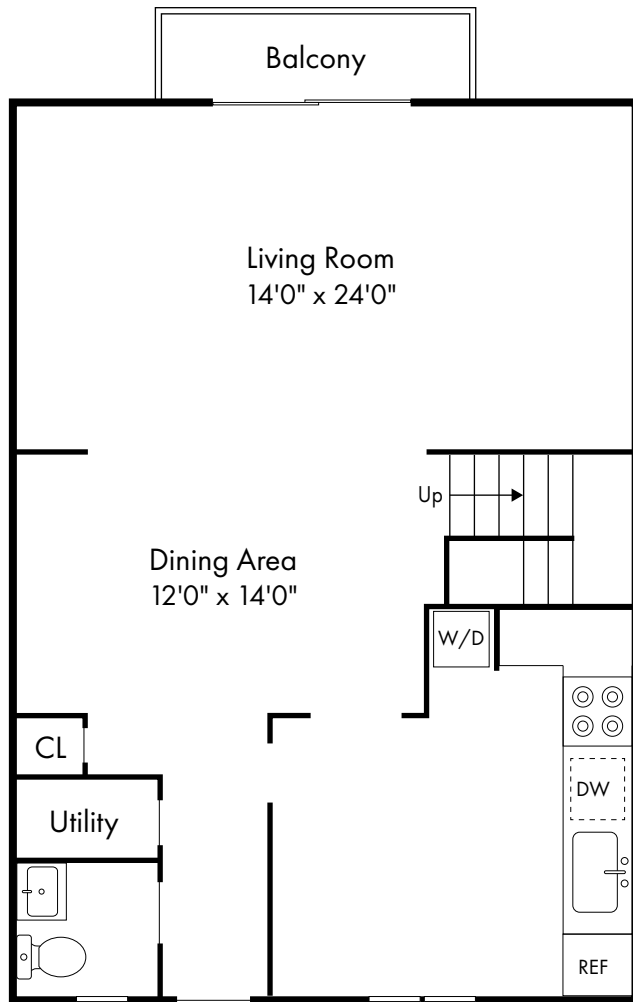


Forest Park Village

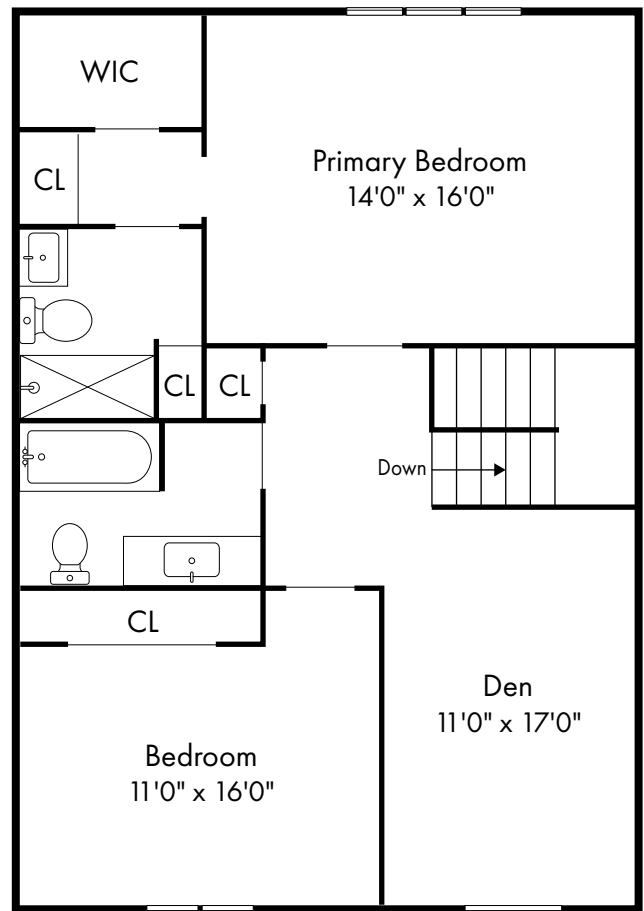
Townhome

Scotch Plains, NJ

2 Bed, 2.5 Bath | 1,765 SF



First Floor



Second Floor