

# GREEN MEADOWS AT PLEASANT PLAINS

1091 WEST WHITTY ROAD, TOMS RIVER, NJ 08755 (732) 487-3765



Located in Toms River, New Jersey is the brand-new apartment community of Green Meadows. From Quartz countertops, stainless steel appliances and soft close cabinets, to a lounge/kitchenette, large master bathroom and a personal washer and dryer, Green Meadows residents enjoy all the comforts of a new luxury community. Community amenities including a Gym, Pool, Clubhouse, and Playground provide residents with leisure and convenience. Conveniently located in Toms River, New Jersey, Green Meadows offers residents easy access to the Jersey shore, city life, shopping and more. Sitting right near the Garden State Parkway, Green Meadows residents are only 35 minutes from Princeton, 45 minutes from Atlantic City, and 60 minutes from Philadelphia. Local shopping, dining and shore attractions help make Green Meadows the perfect place to call home.

[www.GreenMeadowsNJ.com](http://www.GreenMeadowsNJ.com) (732) 487-3765



WE ARE AN EQUAL HOUSING OPPORTUNITY PROVIDER. WE DO NOT DISCRIMINATE ON THE BASIS OF RACE, COLOR, SEX, NATIONAL ORIGIN, RELIGION, HANDICAP OR FAMILIAL STATUS.

WF-GreenMeadows3312023



Garden  
Communities

# Green Meadows at Pleasant Plains

Bedrooms	Name	Baths	Area	Pricing
1	Layout D	1.5	738 sq. ft.	\$2,200
2	Layout E.1	2	1,185 sq. ft.	\$2,500
2	Layout E	2	1,309 sq. ft.	\$2,575
2	Two Bedroom Townhome with Den	2.5	2,332 sq. ft.	\$3,475
3	Three Bedroom Townhome	2.5	2,332 sq. ft.	\$3,550
3	Three Bedroom Townhome (End)	2.5	2,176 sq. ft.	\$3,625

\*All prices are subject to change.

## Apartment Amenities

- Basements
- Ceiling Fan(s)
- Generous Closet Space
- Oversized Closets
- Soft Closing Kitchen Cabinet/Drawers
- Windows with EZ Clean Access and Screens
- Breakfast Area
- Fireplace (select models)
- Individual Intercom System
- Private Balcony or Patio (select apartments)
- Spacious Floor Plans
- Carpeted Bedrooms
- GE Stainless Steel Appliances
- Large Dining Area
- Quartz Kitchen Countertops
- Tiled Bathrooms

## Community Amenities

- 24-Hour Emergency Maintenance
- Common Lounge
- Fitness Center
- Playground
- Cable Ready
- Controlled Access
- Jogging Path/Walking Trail
- Smoke-Free Community
- Clubhouse
- Elevator
- On-Site Management
- Swimming Pool

## Appliances

- Dishwasher
- Oven/Range
- Washer & Dryer in Apartment
- French Door Refrigerator/Freezer
- Range Hood
- Microwave
- Refrigerator and Freezer with Ice Maker

**Visit our Website - [www.GreenMeadowsNJ.com](http://www.GreenMeadowsNJ.com)**

## Rental Office Hours

Monday 9-5	Tuesday 9-5	Wednesday 9-5	Thursday 9-5	Friday 9-5	Saturday 10-4	Sunday Closed
---------------	----------------	------------------	-----------------	---------------	------------------	------------------

When you decide to rent with Garden Communities, the following items will be required when you submit your application:

- Non-refundable online application processing Fee. \$85 per applicant
- An online deposit of \$500 in order to reserve an apartment. This amount will be applied to your first month's rent upon approval and ONLY refunded if your application is declined.
- A valid photo ID, social security card and two current pay stubs.

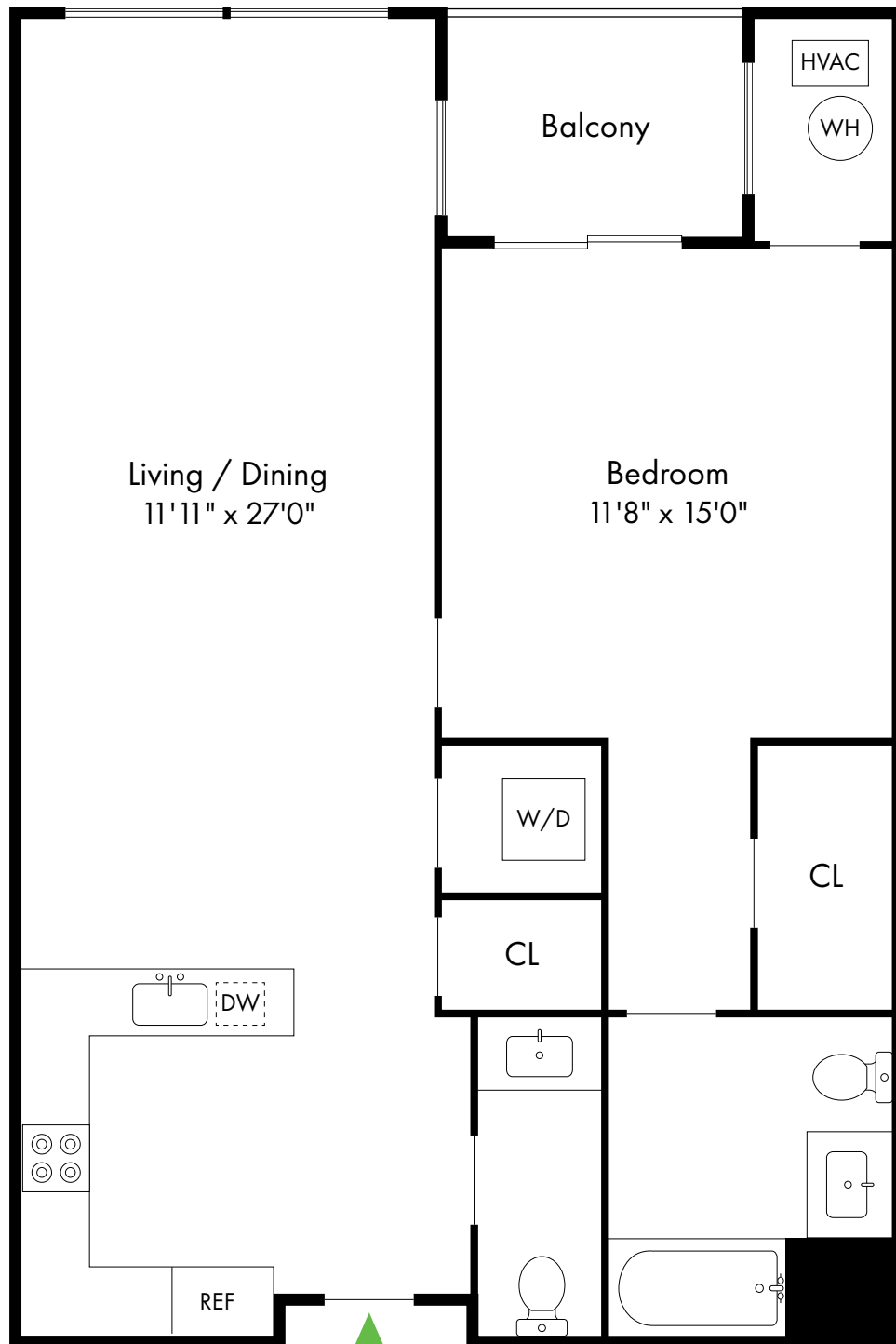
We are an equal opportunity provider. We do not discriminate on the basis of race, color, sex, national origin, religion, handicap or familial status.

# Green Meadows at Pleasant Plains

Layout D

Toms River, NJ

1 Bed, 1.5 Bath | 738 - 890 SF



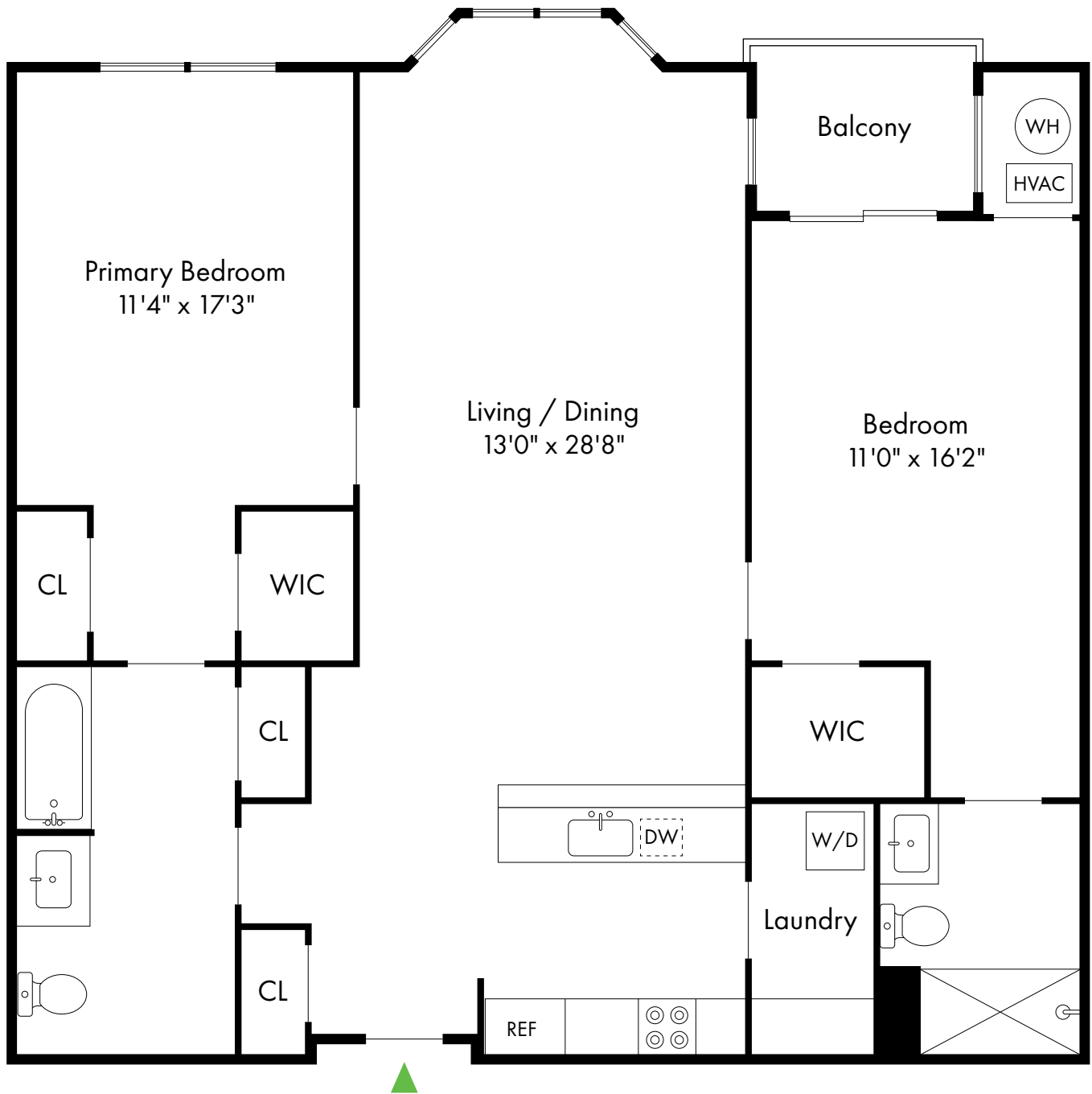
732.691.4910

# Green Meadows at Pleasant Plains

Layout E

Toms River, NJ

2 Bed, 2 Bath | 1,309 - 1,383 SF



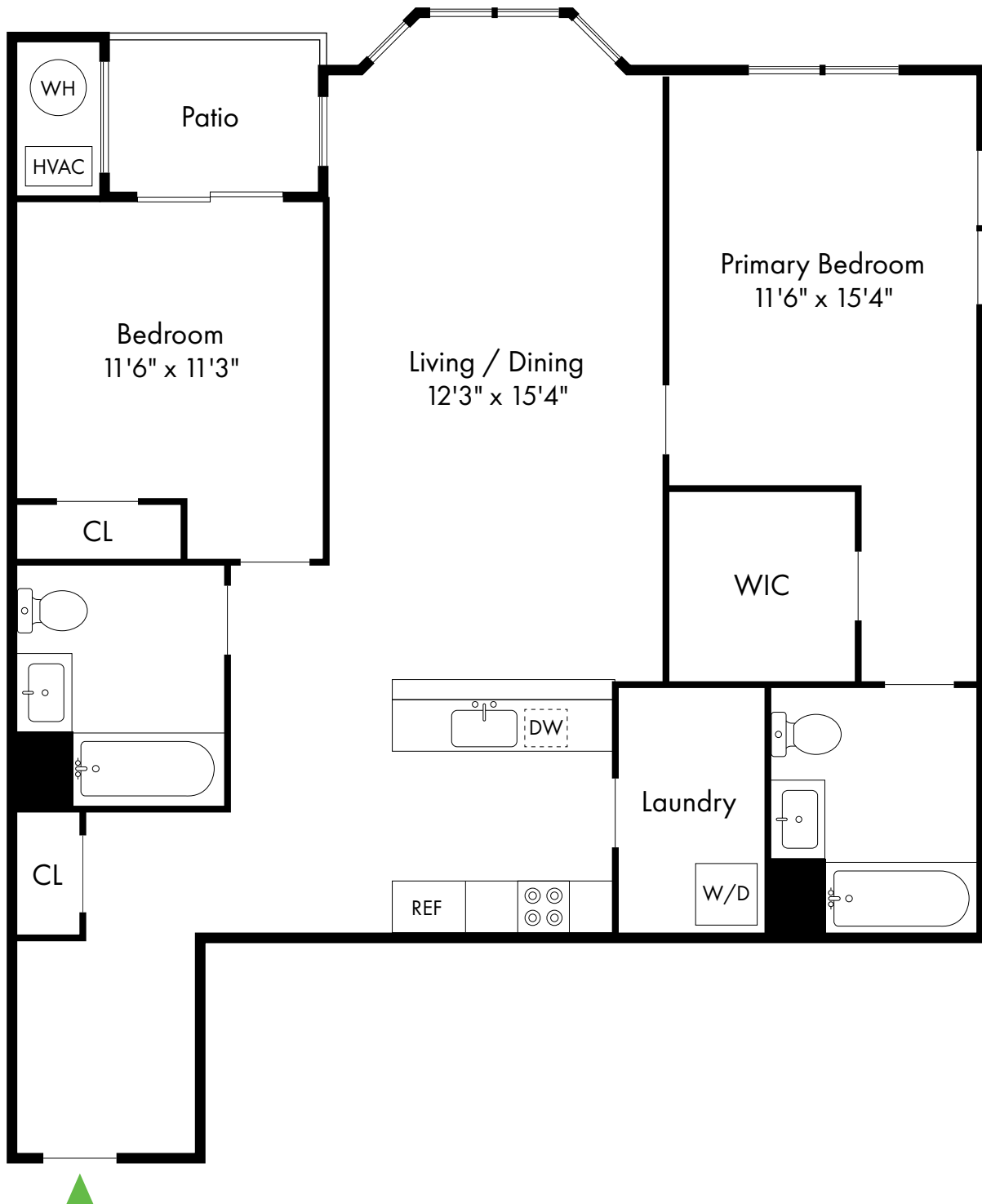
732.691.4910

# Green Meadows at Pleasant Plains

Layout E.1

Toms River, NJ

2 Bed, 2 Bath | 1,185 - 1,205 SF



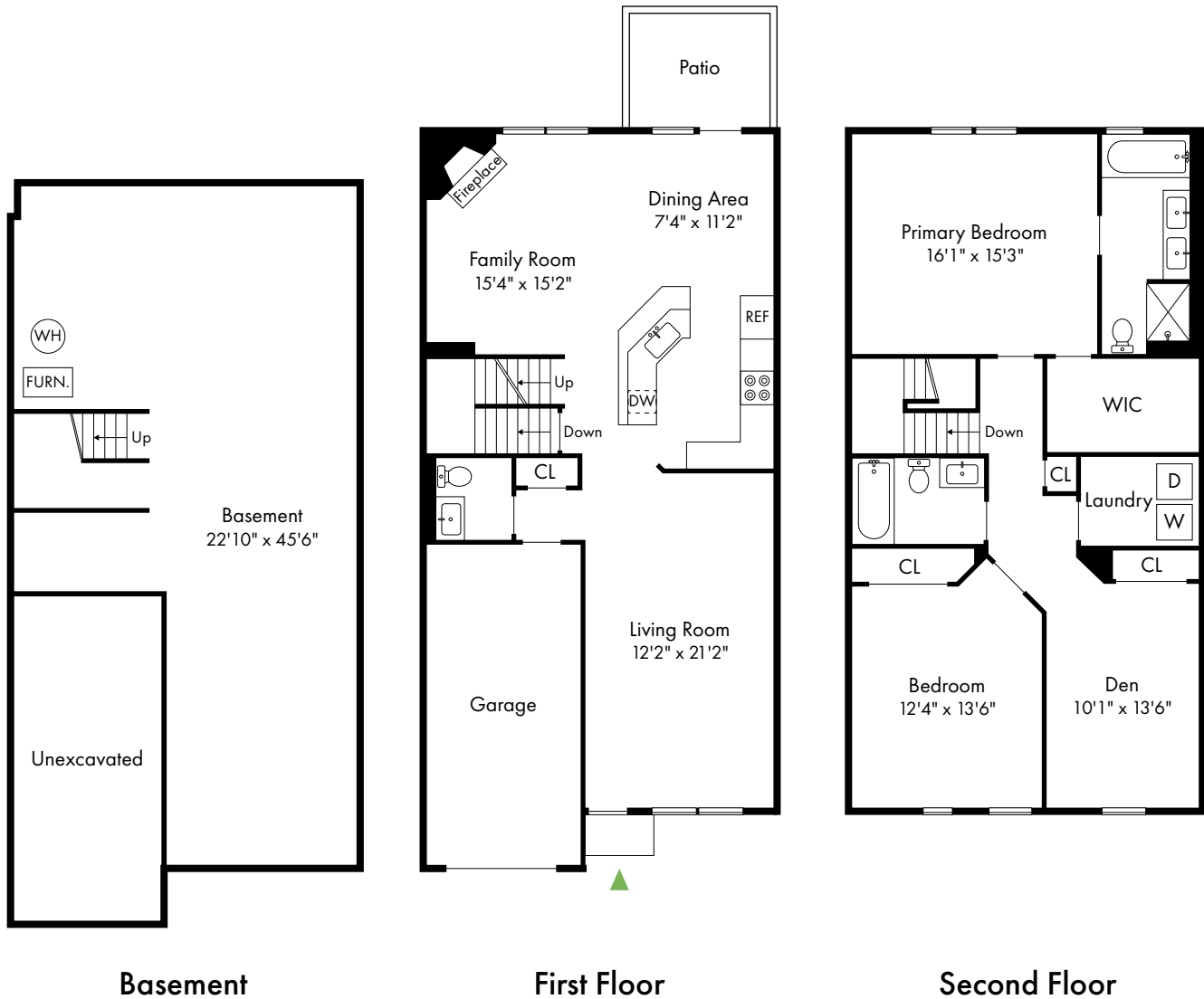
732.691.4910

# Green Meadows at Pleasant Plains

Toms River, NJ

Two Bedroom  
Townhome with Den

2 Bed, 2.5 Bath | 2,332 SF

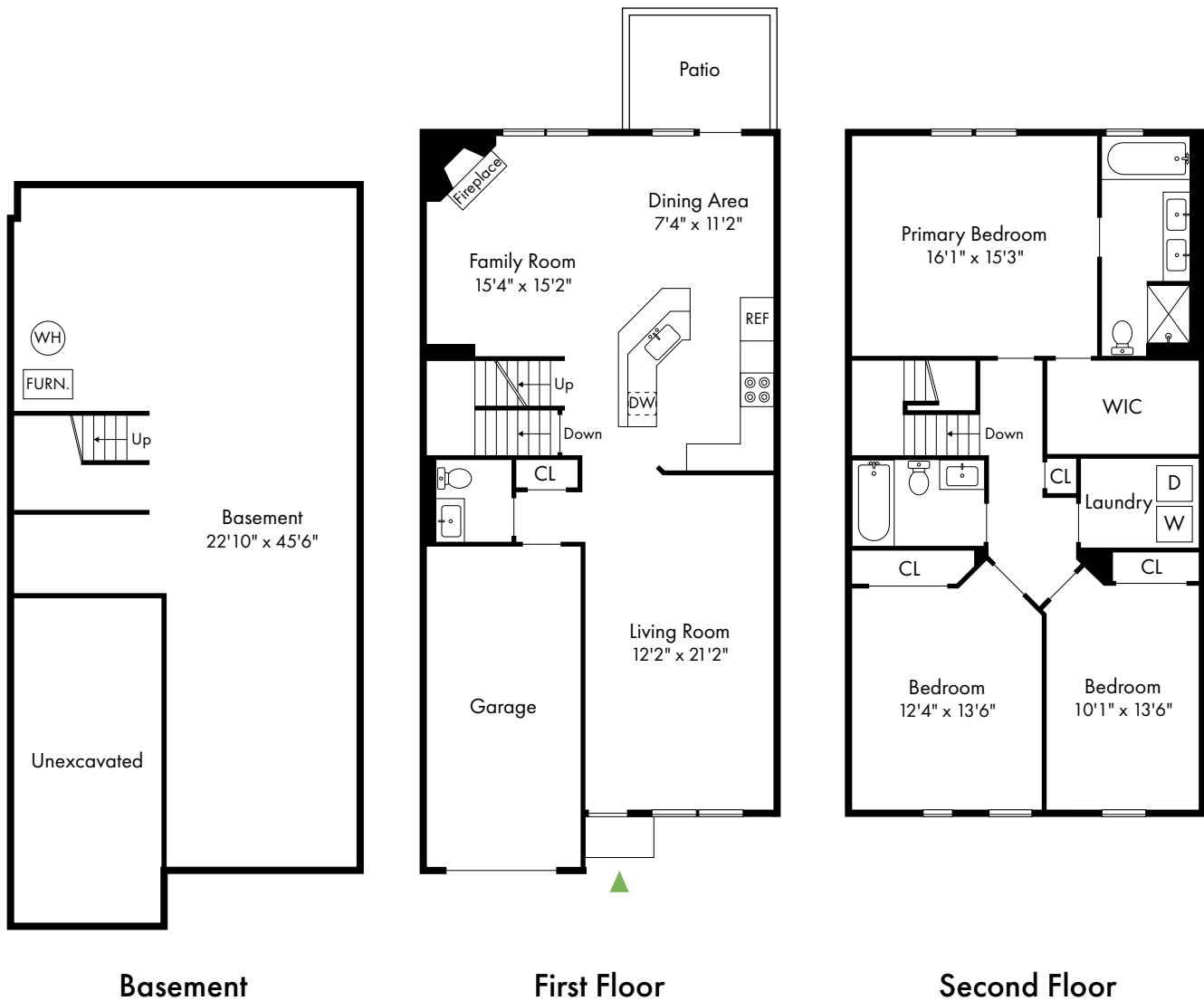


# Green Meadows at Pleasant Plains

Toms River, NJ

Three Bedroom Townhome

3 Bed, 2.5 Bath | 2,332 SF



# Green Meadows at Pleasant Plains

Toms River, NJ

Three Bedroom  
Townhome (End)

2 Bed, 2.5 Bath | 2,176 SF

