

GREENFIELD GARDENS

50 N. Evergreen Road, Edison, NJ 08837 (732) 898-1299



Greenfield Gardens is an collection of 321 garden-style apartments located in Edison Township in Middlesex County. Greenfield Gardens offers one or two bedrooms ranging in size from 950 to 1150 square feet. Each rental home includes a number of impressive amenities such as upgraded kitchens, hardwood floors, walk-in closets and air conditioning. Onsite amenities include a swimming pool and laundry facility. The community is just a short distance from three area malls; Woodbridge Center Mall, Menlo Park Mall and Middlesex Mall, with easy access to major thoroughfares including the Garden State Parkway, New Jersey Turnpike and Routes 1, 9, 287 and 440 and Metro Park.

www.GreenfieldGardensNJ.com (732) 898-1299



WE ARE AN EQUAL HOUSING OPPORTUNITY PROVIDER. WE DO NOT DISCRIMINATE ON THE BASIS OF RACE, COLOR, SEX, NATIONAL ORIGIN, RELIGION, HANDICAP OR FAMILIAL STATUS.

WF-Greenfield083116



Greenfield Gardens

Bedrooms	Name	Baths	Area	Pricing
1	One Bedroom	1	920-980 sq. ft.	\$1,795 - \$1,820
2	Two Bedroom	1	1,150 sq. ft.	\$2,240 - \$2,265

*All prices are subject to change.

Apartment Amenities

- Air Conditioning
- Eat-In Kitchen

Community Amenities

- 24-Hour Emergency Maintenance
- Cable Ready
- Easy Access To NYC Transportation
- Laundry Facilities
- Natural Gas
- Public Transit Nearby
- Swimming Pool

Appliances

- Cook Top
- Range Hood
- Refrigerator/Freezer
- Wall Oven

Visit our Website - www.GreenfieldGardensNJ.com

Rental Office Hours

Monday 9-2	Tuesday 10-4	Wednesday 10-4	Thursday 10-4	Friday 10-4	Saturday 10-4	Sunday Closed
---------------	-----------------	-------------------	------------------	----------------	------------------	------------------

When you decide to rent with Garden Communities, the following items will be required when you submit your application:

- Non-refundable online application processing Fee. \$75 per applicant
- An online deposit of \$500 in order to reserve an apartment. This amount will be applied to your first month's rent upon approval and ONLY refunded if your application is declined.
- A valid photo ID, social security card and two current pay stubs.

We are an equal opportunity provider. We do not discriminate on the basis of race, color, sex, national origin, religion, handicap or familial status.

Greenfield Gardens

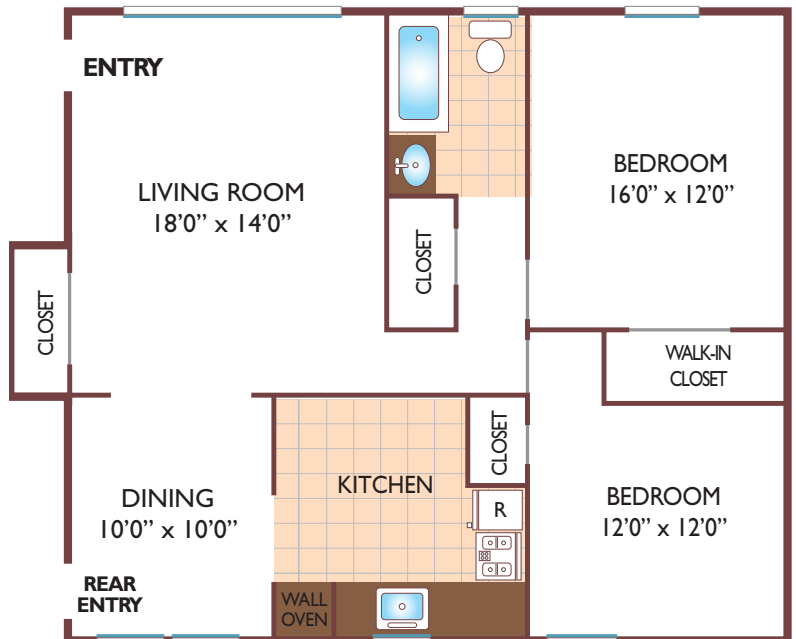
One Bedroom Floor Plan

Ground Level Unit,
with 1 Bath, 920 sq. ft.



Two Bedroom Floor Plan

Ground Level Unit,
with 1 Bath, 1150 sq. ft.



All dimensions, positions, locations and details are approximate.

All rent prices and community information subject to change.