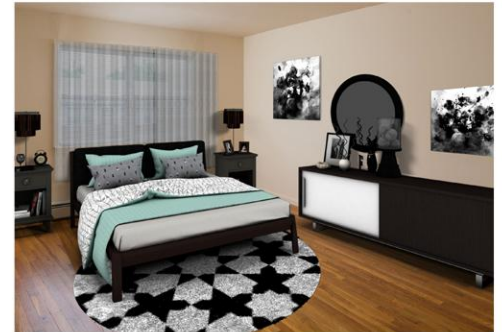


LAKEVIEW GARDENS

200 Vail Road, Parsippany, NJ 07054 (973) 665-6552



Lakeview Gardens is located off Route 46 in Parsippany, offering our residents an affordable, comfortable place to live. Our community consists of 214 one and two bedroom apartments ranging in size from 885 sq. ft. to 1105 sq. ft. Lakeview Gardens is conveniently located near all major highways and is a 45 minute commute to New York City. All residences offer a fully equipped kitchen, hardwood floors, an air conditioner unit, ample parking on-site and are cable ready, as well as an on-site swimming pool and 24 Hour Emergency Maintenance.

www.LakeviewGardensNJ.com (973) 665-6552



WE ARE AN EQUAL HOUSING OPPORTUNITY PROVIDER. WE DO NOT DISCRIMINATE ON THE BASIS OF RACE, COLOR, SEX, NATIONAL ORIGIN, RELIGION, HANDICAP OR FAMILIAL STATUS.

WF-LakeviewGardens05042020



Lakeview Gardens

Bedrooms	Name	Baths	Area	Pricing
1	One Bedroom	1	885 sq. ft.	\$1,975 - \$2,005
2	Two Bedroom	1	1,105 sq. ft.	\$2,645

*All prices are subject to change.

Apartment Amenities

- Air Conditioning
- Generous Closet Space
- Large Dining Area

Community Amenities

- 24-Hour Emergency Maintenance
- Cable Ready
- Laundry Facilities
- Natural Gas
- Pet-Friendly
- Public Transit Nearby
- Security Lighting
- Swimming Pool

Appliances

- Dishwasher
- Oven/Range
- Range Hood
- Refrigerator/Freezer

Visit our Website - www.LakeviewGardensNJ.com

Rental Office Hours

Monday 8:30-4	Tuesday 8:30-4	Wednesday 8:30-4	Thursday 8:30-4	Friday 8:30-4	Saturday Closed	Sunday Closed
------------------	-------------------	---------------------	--------------------	------------------	--------------------	------------------

When you decide to rent with Garden Communities, the following items will be required when you submit your application:

- Non-refundable online application processing Fee. \$85 per applicant
- An online deposit of \$500 in order to reserve an apartment. This amount will be applied to your first month's rent upon approval and ONLY refunded if your application is declined.
- A valid photo ID, social security card and two current pay stubs.

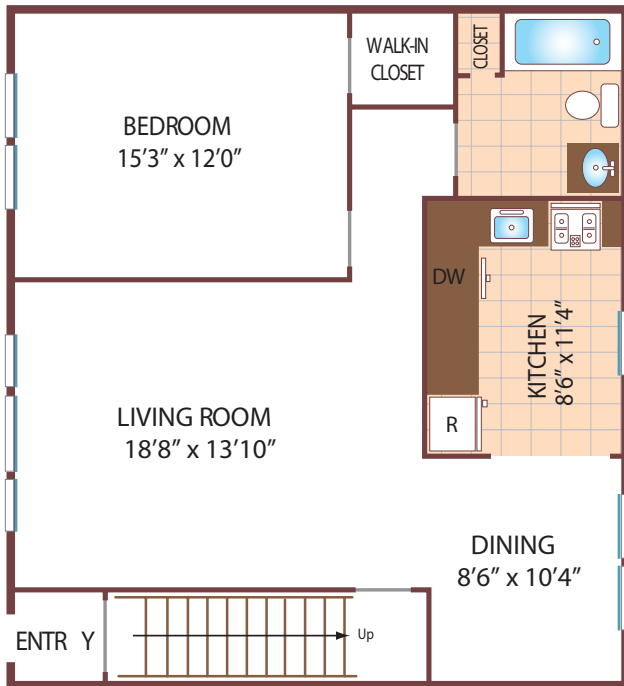
We are an equal opportunity provider. We do not discriminate on the basis of race, color, sex, national origin, religion, handicap or familial status.



Lakeview Gardens

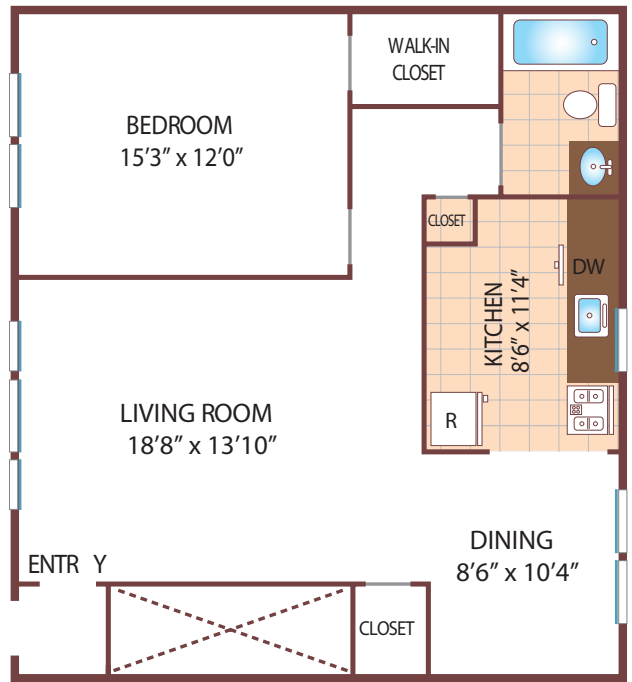
One Bedroom Floor Plan

Upper Level Unit - Type L
with 1 Bath, 885 sq. ft.



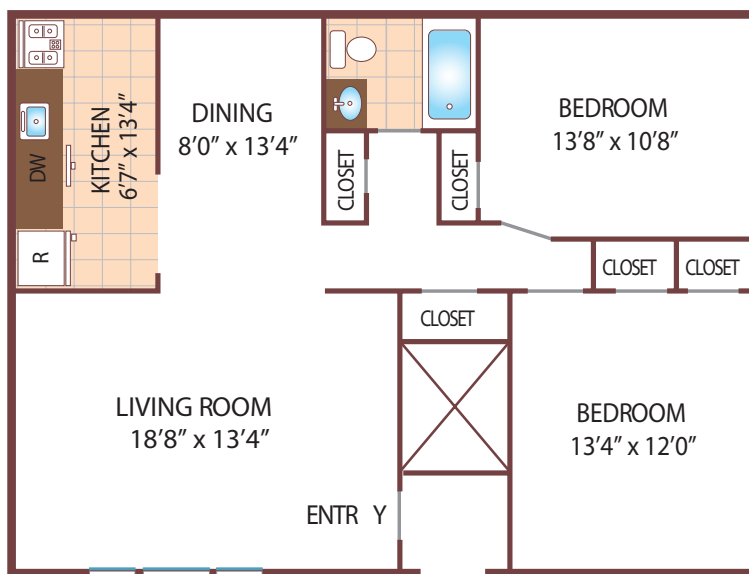
One Bedroom Floor Plan

Ground Level Unit - Type I
with 1 Bath, 885 sq. ft.



Two Bedroom Floor Plan

Ground Level Unit
with 1 Bath, 1105 sq. ft.



All dimensions, positions, locations and details are approximate.
All rent prices and community information subject to change.

