

LONDON TERRACE

LEASING OFFICE

732.860.5420
LondonTerraceNJ.com

713 Downing Street
Old Bridge, NJ 08859



LONDON TERRACE

SPACIOUS HOMES | CONVENIENT LOCATION

Welcome to London Terrace, an exceptional rental community in Old Bridge Township, NJ. Featuring 962 spacious 1- and 2-bedroom residences ranging from 735 to 1885 square feet, our apartments offer air conditioning, eat-in kitchens, private patios or balconies, and elegant hardwood flooring. Our spacious layouts provide ideal spaces for home offices or play areas. Community amenities include 24-hour emergency maintenance, basketball and tennis courts, a swimming pool, playground, picnic/barbecue area, ample free parking, and available garages. Located moments from public transportation and major highways (Routes 9, 34, 35, and the Garden State Parkway), London Terrace ensures easy commuting.

London Terrace offers a stunning selection of spacious one- and two-bedroom rental residences. Find the perfect floor plan to fit your lifestyle.



All renderings, amenities, existing or future views and photos depicted or otherwise described herein are proposed and conceptual only, and are based upon preliminary development plans, which are subject to withdrawal, revisions, and other changes, without notice. Please inquire within for more details.

8.6.24

London Terrace

Bedrooms	Name	Baths	Area	Pricing
1	One Bedroom	1	735 sq. ft.	\$1,850
1	One Bedroom Luxury	1	855 sq. ft.	\$1,890
1	One Bedroom with Rec Room	1	1,250 sq. ft.	\$2,000
1	One Bedroom w/Basement	1.5	1,250 sq. ft.	\$2,050
1	One Bedroom Luxury with Rec Room	1	1,460 sq. ft.	\$2,080 - \$2,095
2	Two Bedroom/1 Bath	1	1,080-1,105 sq. ft.	\$2,455
2	Two Bedroom/1.5 Baths	1.5	1,105 sq. ft.	\$2,495 - \$2,540
2	Two Bedroom Luxury/1 Bath	1	1,105 sq. ft.	\$2,515
2	Two Bedroom Luxury/1.5 Baths	1.5	1,075 sq. ft.	\$2,605
2	Two Bedroom/1.5 Baths with Rec Room	1.5	1,830-1,885 sq. ft.	\$2,680
2	Two Bedroom Luxury/1.5 Baths with Rec Room	1.5	1,830 sq. ft.	\$2,710
2	Two Bedroom/1 Bath with Rec Room	1	1,840-1,885 sq. ft.	\$2,600 - \$2,680

*All prices are subject to change.

Apartment Amenities

- Air Conditioning
- Eat-In Kitchen
- Patio

Community Amenities

- 24-Hour Emergency Maintenance
- Laundry Facilities
- Playground
- Tennis Court(s)
- Basketball Court(s)
- Natural Gas
- Security Lighting
- Verizon FIOS Available
- Cable Ready
- Picnic/Barbecue Area
- Swimming Pool
- Walking Distance to NYC Transportation

Appliances

- Dishwasher
- Refrigerator/Freezer
- Oven/Range
- Range Hood

Visit our Website - www.LondonTerraceNJ.com

Rental Office Hours

Monday 8:30-4:30	Tuesday 8:30-7:00	Wednesday 8:30-4:30	Thursday 8:30-4:30	Friday 8:30-4:00	Saturday 8:00-2:00	Sunday Closed
---------------------	----------------------	------------------------	-----------------------	---------------------	-----------------------	------------------

When you decide to rent with Garden Communities, the following items will be required when you submit your application:

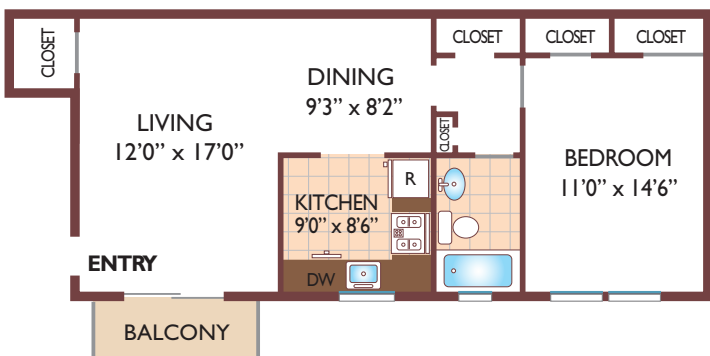
- Non-refundable online application processing Fee. \$85 per applicant
- An online deposit of \$200 in order to reserve an apartment. This amount will be applied to your first month's rent upon approval and ONLY refunded if your application is declined.
- A valid photo ID, social security card and two current pay stubs.

We are an equal opportunity provider. We do not discriminate on the basis of race, color, sex, national origin, religion, handicap or familial status.

London Terrace

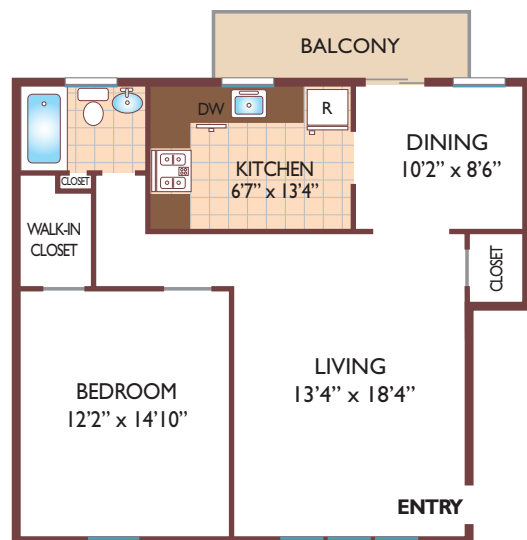
One Bedroom Floor Plan

Ground Level Unit
with 1 Bath, 735 sq. ft.



One Bedroom Floor Plan

Luxury - Ground Level Unit
with 1 Bath, 855 sq. ft.



Two Bedroom Floor Plan

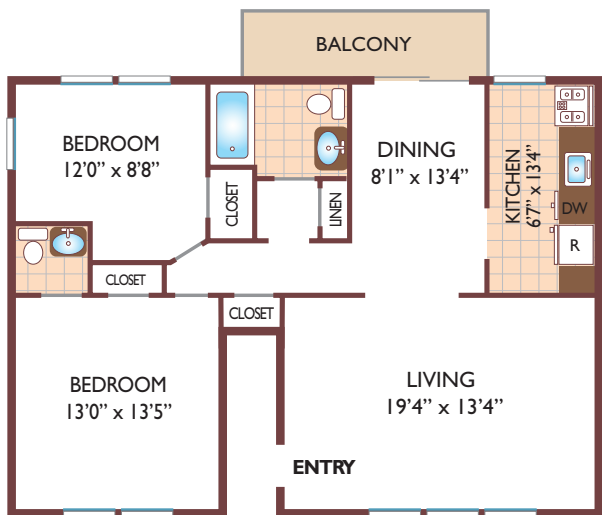
Luxury - Ground Level Unit
with 1 Bath, 1105 sq. ft.



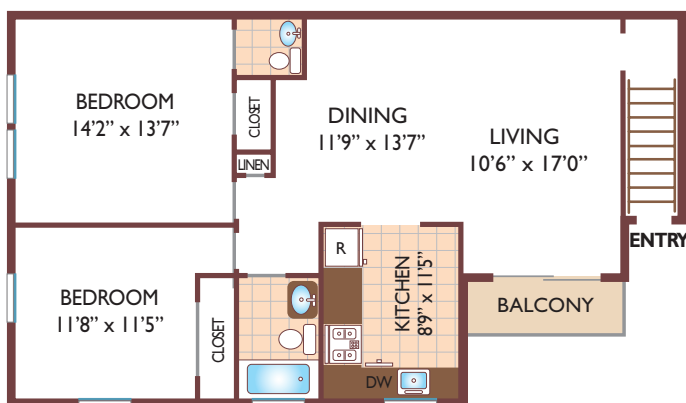
All dimensions, positions, locations and details are approximate.
All rent prices and community information subject to change.



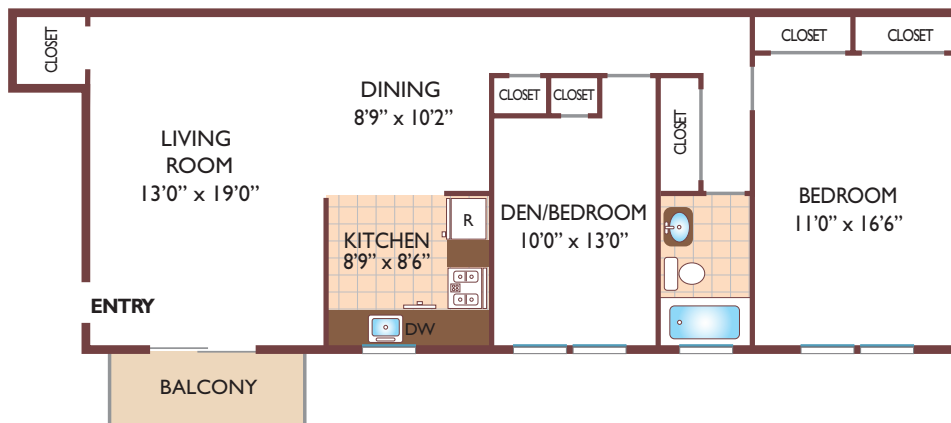
Two Bedroom Floor Plan
Luxury - Ground Level Unit
with 1½ Baths, 1075 sq. ft.



Two Bedroom Floor Plan
Upper Level Unit
with 1½ Baths, 1105 sq. ft.



Two Bedroom Floor Plan
Ground Level Unit
with 1 Bath, 1080 sq. ft.



BALCONY

CLOSET CLOSET CLOSET CLOSET

LIVING ROOM 13'0" x 19'0"

DINING 8'9" x 10'2"

KITCHEN 8'9" x 8'6"

DEN/BEDROOM 10'0" x 13'0"

BEDROOM 11'0" x 16'6"

ENTRY

BATH

BALCONY

CLOSET CLOSET CLOSET CLOSET

DEN/BEDROOM 10'8" x 13'0"

KITCHEN 6'10" x 9'6"

DINING 13'0" x 9'6"

All dimensions, positions, locations and details are approximate.

All rent prices and community information subject to change.



