

MOUNTAIN WAY ESTATES

LEASING OFFICE

973.847.2014
MountainWayEstatesNJ.com

648 Old Dover Road
Parsippany, NJ 07950



MOUNTAIN WAY ESTATES

SPACIOUS HOMES | UPSCALE AMENITIES | CONVENIENT LOCATION

Experience luxury living at Mountain Way Estates in Parsippany, NJ. Our newly constructed 2- and 3-bedroom rental townhomes and 2-bedroom apartments offer spacious floor plans and upscale features. Nestled in Morris County's scenic mountains, enjoy easy commuting with access to NJ transit and major highways just 30 miles from New York. Indulge in chef-inspired kitchens with granite countertops and modern appliances, hardwood flooring, and in-suite washer and dryers. With 24-hour maintenance, and a pet-friendly, smoke-free community, enjoy peace of mind and convenience. Take advantage of easy access to nearby parks, Lake Hopatcong, restaurants, shops, and more.

Mountain Way Estates offers a stunning selection of spacious two-, three-, and four-bedroom rental residences. Find the perfect floor plan to fit your lifestyle.



All renderings, amenities, existing or future views and photos depicted or otherwise described herein are proposed and conceptual only, and are based upon preliminary development plans, which are subject to withdrawal, revisions, and other changes, without notice. Please inquire within for more details.



Mountain Way Estates

Bedrooms	Name	Baths	Area	Pricing
2	Willow	1	1,003 sq. ft.	\$2,675
2	Tulip	2.5	1,848 sq. ft.	\$3,700 - \$3,900
2	Tulip with Great Room	2.5	1,960 sq. ft.	\$4,050
3	Oak with Great Room	2.5	2,080 sq. ft.	\$4,150
3	Oak	2.5	1,808 sq. ft.	\$3,750 - \$3,950
3	Sycamore	2.5	1,978 sq. ft.	\$3,950 - \$4,075
3	Sycamore with Great Room	2.5	2,252 sq. ft.	\$3,975
4	Birchwood - End Unit	3.5	3,872 sq. ft.	\$6,300
4	Magnolia - Interior Unit	3.5	3,494 sq. ft.	\$6,300

*All prices are subject to change.

Apartment Amenities

- 2.5 Bathrooms
- Deck
- Granite Kitchen Countertops
- Resident Controlled Central Air & Heat
- Basements
- Front Porch
- Hardwood Flooring
- Stainless Steel Appliances
- Carpeted Bedrooms
- Garage Parking (Townhomes Only)
- Private Patio or Balcony
- Washer/Dryer in Every Home

Community Amenities

- 24-Hour Emergency Maintenance
- Natural Gas
- Verizon FIOS Available
- Assigned Parking
- Pet-Friendly
- Cable Ready
- Smoke-Free Community

Appliances

- Dishwasher
- Gas Range
- Refrigerator/Freezer
- Microwave
- Washer & Dryer in Apartment

Visit our Website - www.MountainWayEstatesNJ.com

Rental Office Hours

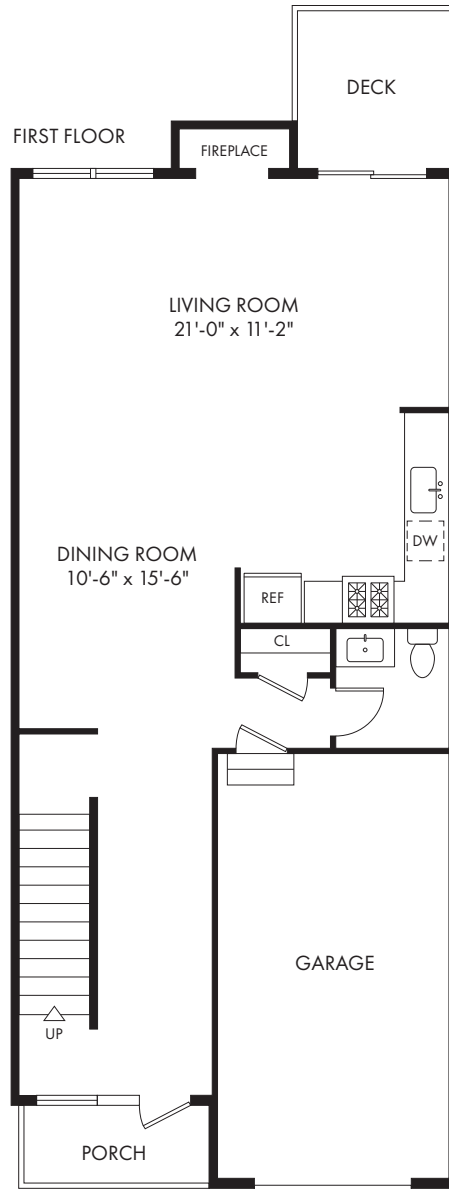
Monday By Appt	Tuesday By Appt	Wednesday By Appt	Thursday By Appt	Friday By Appt	Saturday By Appt	Sunday By Appt
-------------------	--------------------	----------------------	---------------------	-------------------	---------------------	-------------------

When you decide to rent with Garden Communities, the following items will be required when you submit your application:

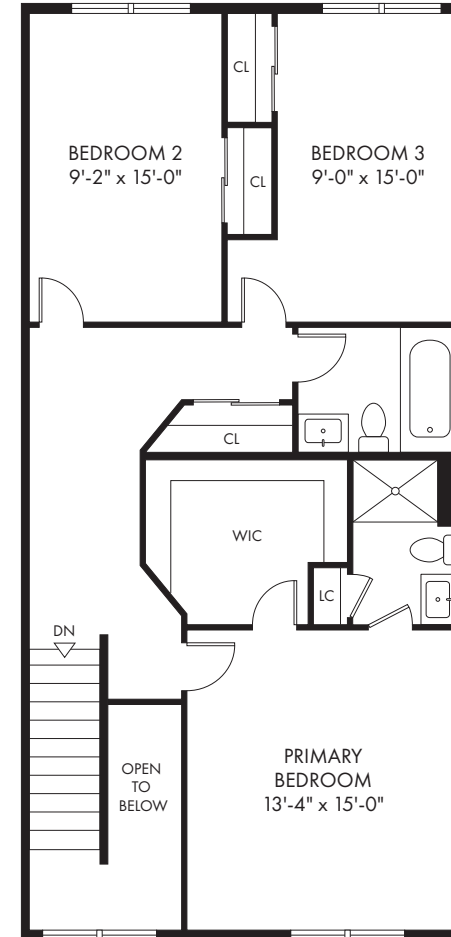
- Non-refundable online application processing Fee. \$85 per applicant
- An online deposit of \$500 in order to reserve an apartment. This amount will be applied to your first month's rent upon approval and ONLY refunded if your application is declined.
- A valid photo ID, social security card and two current pay stubs.

We are an equal opportunity provider. We do not discriminate on the basis of race, color, sex, national origin, religion, handicap or familial status.

3 BEDROOM | 2 BATHS | POWDER ROOM
1808 SF



SECOND FLOOR



973.936.8500

MountainWayEstatesNJ.com

3 BEDROOM | 2 BATHS | POWDER ROOM
2080 SF

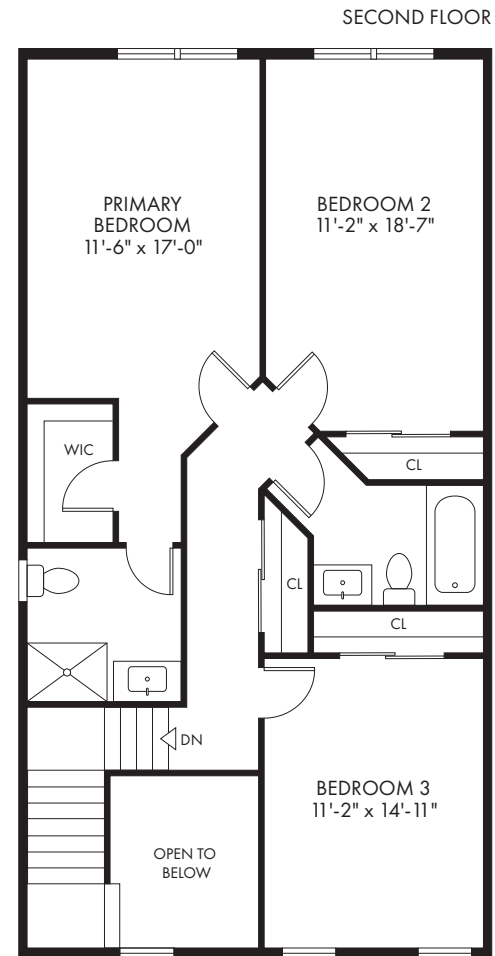
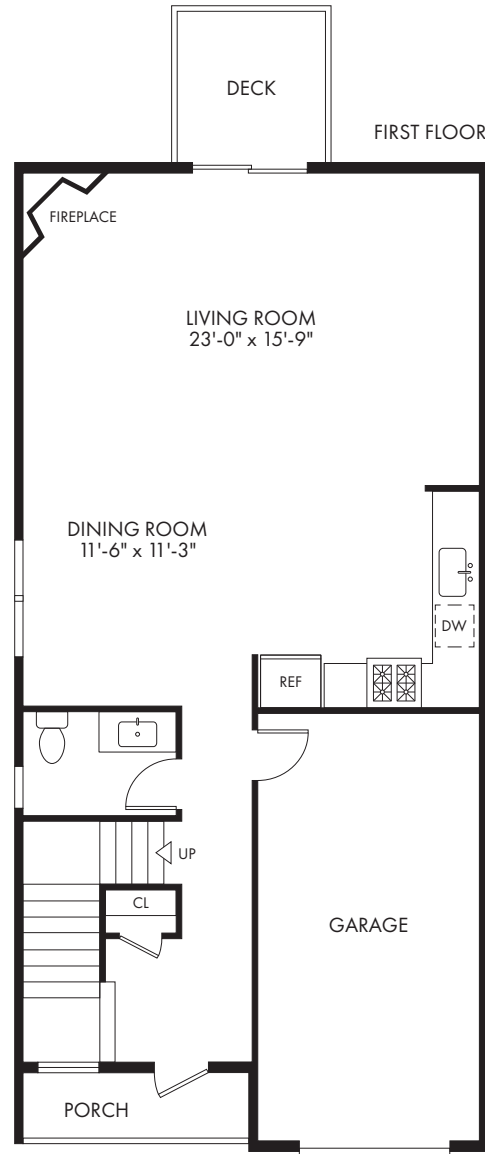


973.936.8500

MountainWayEstatesNJ.com

 All dimensions, positions, locations and details are approximate.

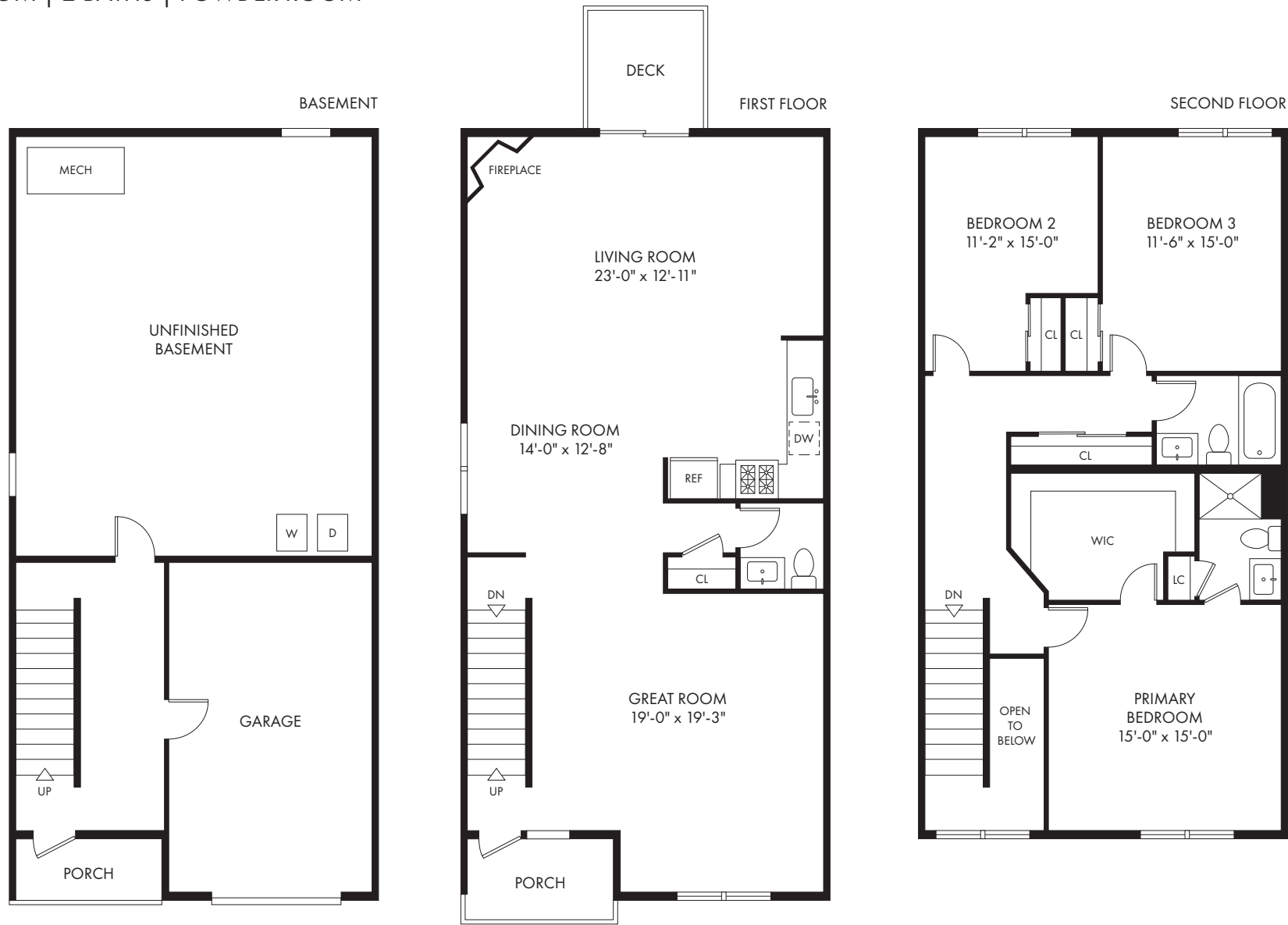
3 BEDROOM | 2 BATHS | POWDER ROOM
1978 SF



973.936.8500


MountainWayEstatesNJ.com

3 BEDROOM | 2 BATHS | POWDER ROOM
2252 SF

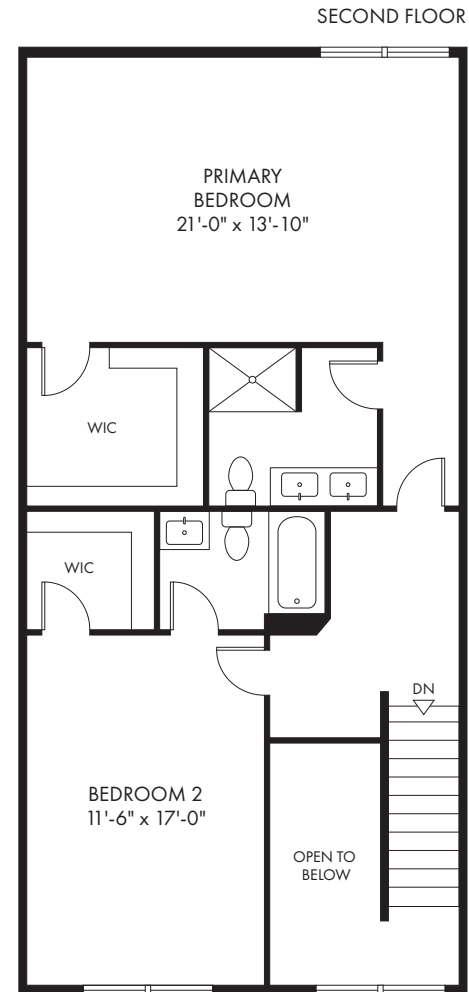
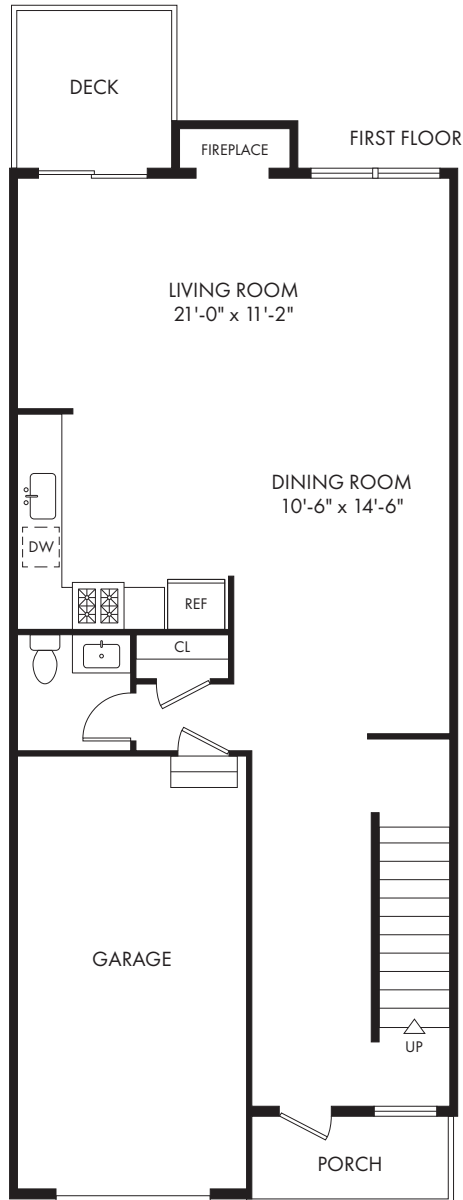


973.936.8500

MountainWayEstatesNJ.com

 All dimensions, positions, locations and details are approximate.

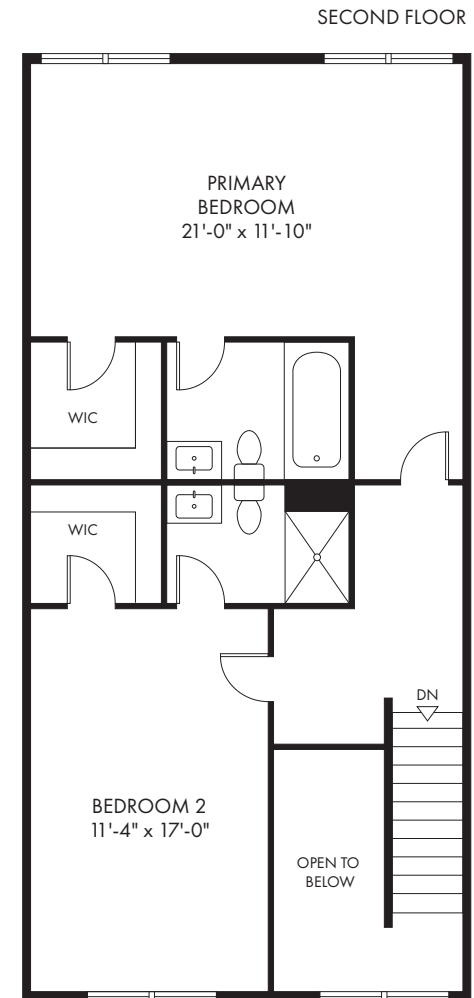
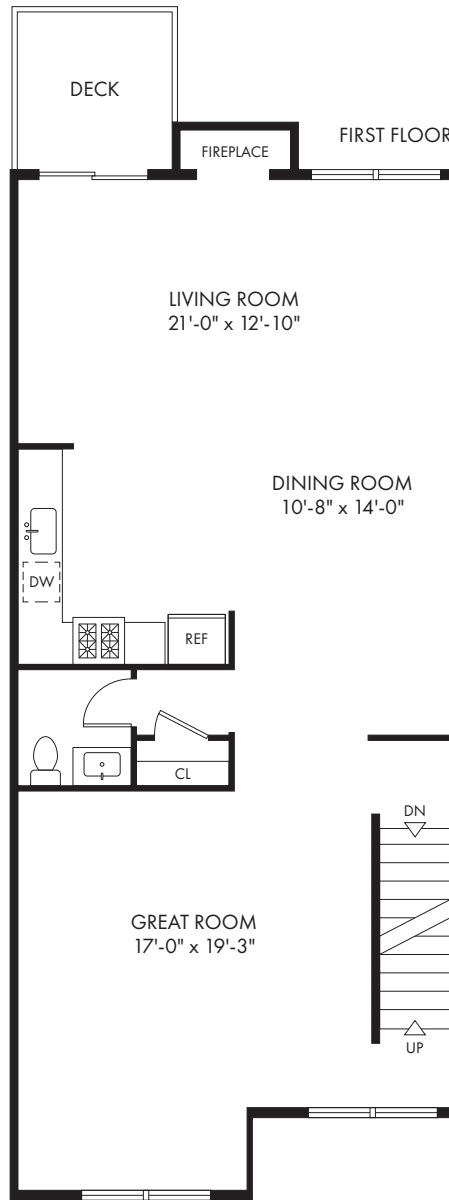
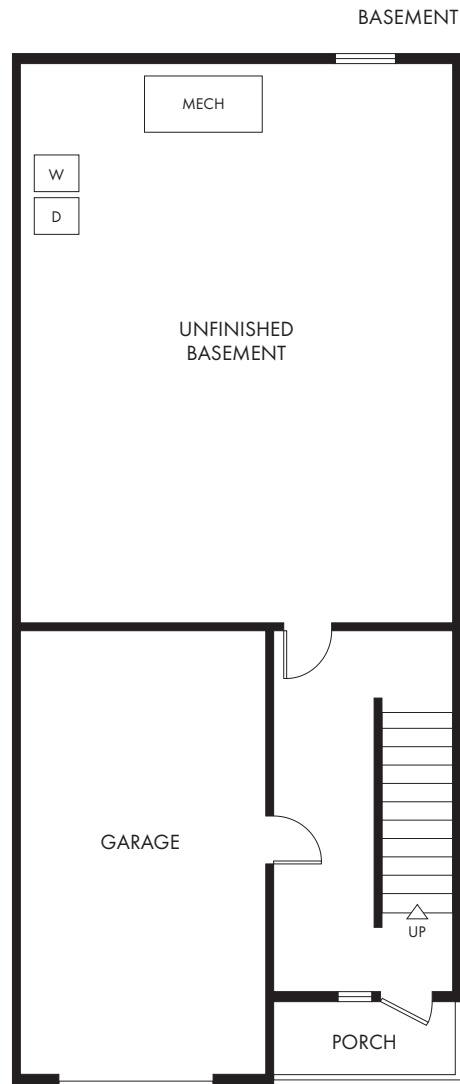
2 BEDROOM | 2 BATHS | POWDER ROOM
1848 SF



973.936.8500

MountainWayEstatesNJ.com

2 BEDROOM | 2 BATHS | POWDER ROOM
1960 SF



973.936.8500

MountainWayEstatesNJ.com



All dimensions, positions, locations and details are approximate.

CORNER 4 BEDROOM | 3 BATHS | POWDER ROOM



973.936.8500

MountainWayEstatesNJ.com

 All dimensions, positions, locations and details are approximate.

4 BEDROOM | 3 BATHS | POWDER ROOM



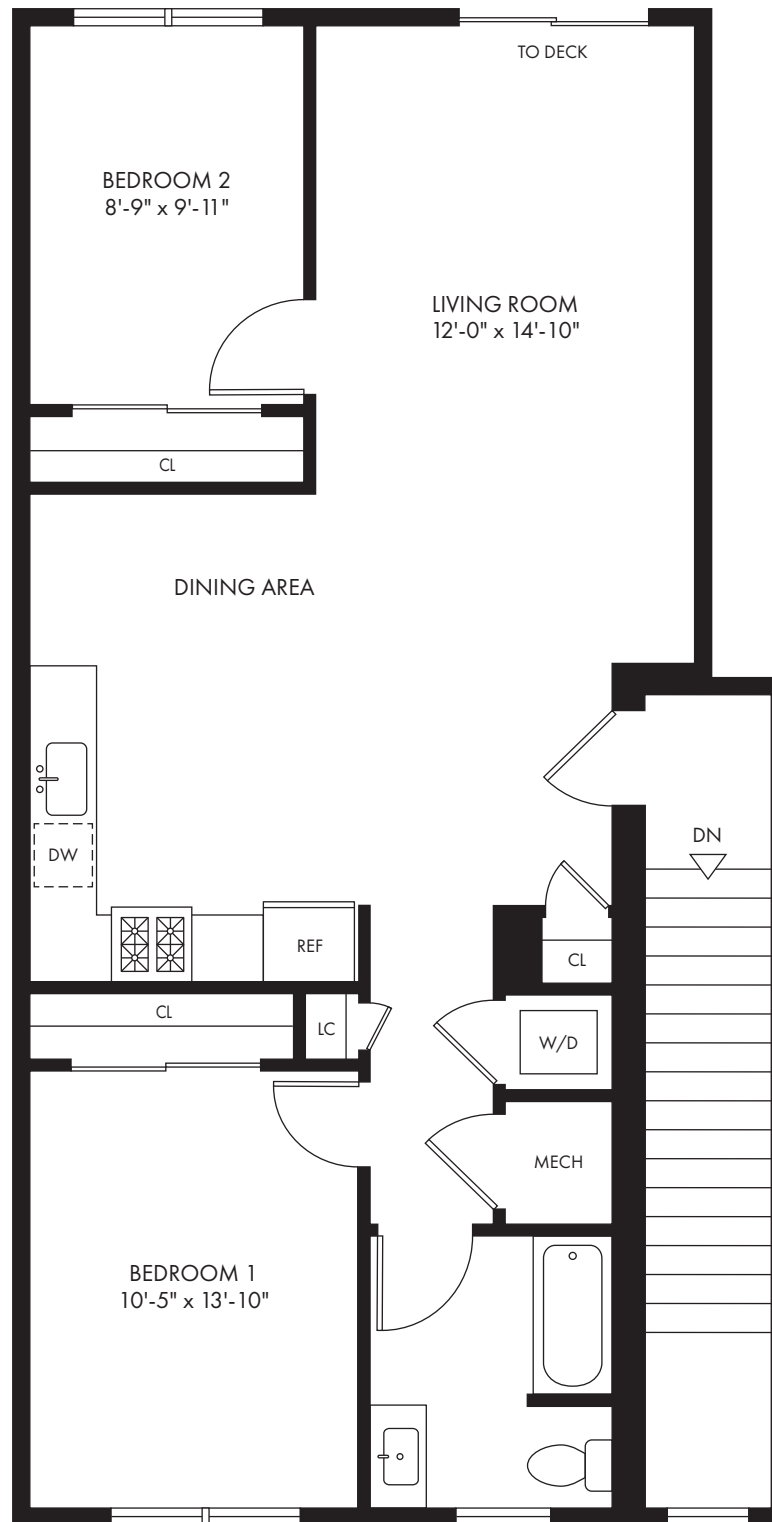
973.936.8500

MountainWayEstatesNJ.com



All dimensions, positions, locations and details are approximate.

2 BEDROOM | 1 BATH



973.936.8500

MountainWayEstatesNJ.com