

OAKES POND AT BLOOMFIELD

LEASING OFFICE

973.988.5173
OakesPondBloomfield.com

440 Memorial Parkway
Bloomfield, NJ 07003



OAKES POND AT BLOOMFIELD

SPACIOUS HOMES. RESORT-STYLE AMENITIES. CONVENIENT LOCATION.

Located just moments from the Garden State Parkway, Oakes Pond at Bloomfield is a community of luxurious one- and two-bedroom apartments ranging in size from 900 to 1630 square feet. These spacious homes feature granite counters, breakfast bars, stainless steel appliances, soaking tubs, oversized showers with double vanity and custom walk-in closets as well as resident-controlled central air and heat, in-home washer and dryer, and a large private balcony. Residents also enjoy resort-style amenities including a community clubhouse with fireside lounge, a state-of-the-art fitness center, game room, TV lounge and a heated outdoor swimming pool with sundeck.

Oakes Pond at Bloomfield offers a stunning selection of spacious one- and two-bedroom rental residences. Find the perfect floor plan to fit your lifestyle.



All renderings, amenities, existing or future views and photos depicted or otherwise described herein are proposed and conceptual only, and are based upon preliminary development plans, which are subject to withdrawal, revisions, and other changes, without notice. Please inquire within for more details.

9.20.23

Oakes Pond at Bloomfield

Bedrooms	Name	Baths	Area	Pricing
1	1A.2	1	900 sq. ft.	\$2,925
1	1D.2	1	1,270 sq. ft.	\$3,075
1	1B.2	1.5	900 sq. ft.	\$2,955
2	2A.2	2	1,340 sq. ft.	\$3,545
2	2E.2	2	1,525 sq. ft.	\$3,895 - \$3,995
2	2D.1	2	1,630-1,697 sq. ft.	\$3,995

*All prices are subject to change.

Apartment Amenities

- Granite Kitchen Countertops
- Resident Controlled Central Air & Heat
- Plush Wall-To-Wall Carpet
- Spacious Walk-In Closet
- Private Patio or Balcony
- Voluminous 9' High Ceilings

Community Amenities

- 24-Hour Emergency Maintenance
- Controlled Access at Building Entry
- Natural Gas
- Cable Ready
- Easy Access To NYC Transportation
- Smoke-Free Community
- Community Room
- Fitness Center
- Swimming Pool

Appliances

- Dishwasher
- Refrigerator/Freezer
- Microwave
- Oven/Range

Visit our Website - www.OakesPondBloomfield.com

Rental Office Hours

Monday 9-4:30	Tuesday 9-4:30	Wednesday 9-6	Thursday 9-4:30	Friday 9-4:30	Saturday 10-4	Sunday Closed
------------------	-------------------	------------------	--------------------	------------------	------------------	------------------

When you decide to rent with Garden Communities, the following items will be required when you submit your application:

- Non-refundable online application processing Fee. \$85 per applicant
- An online deposit of \$500 in order to reserve an apartment. This amount will be applied to your first month's rent upon approval and ONLY refunded if your application is declined.
- A valid photo ID and social security card.

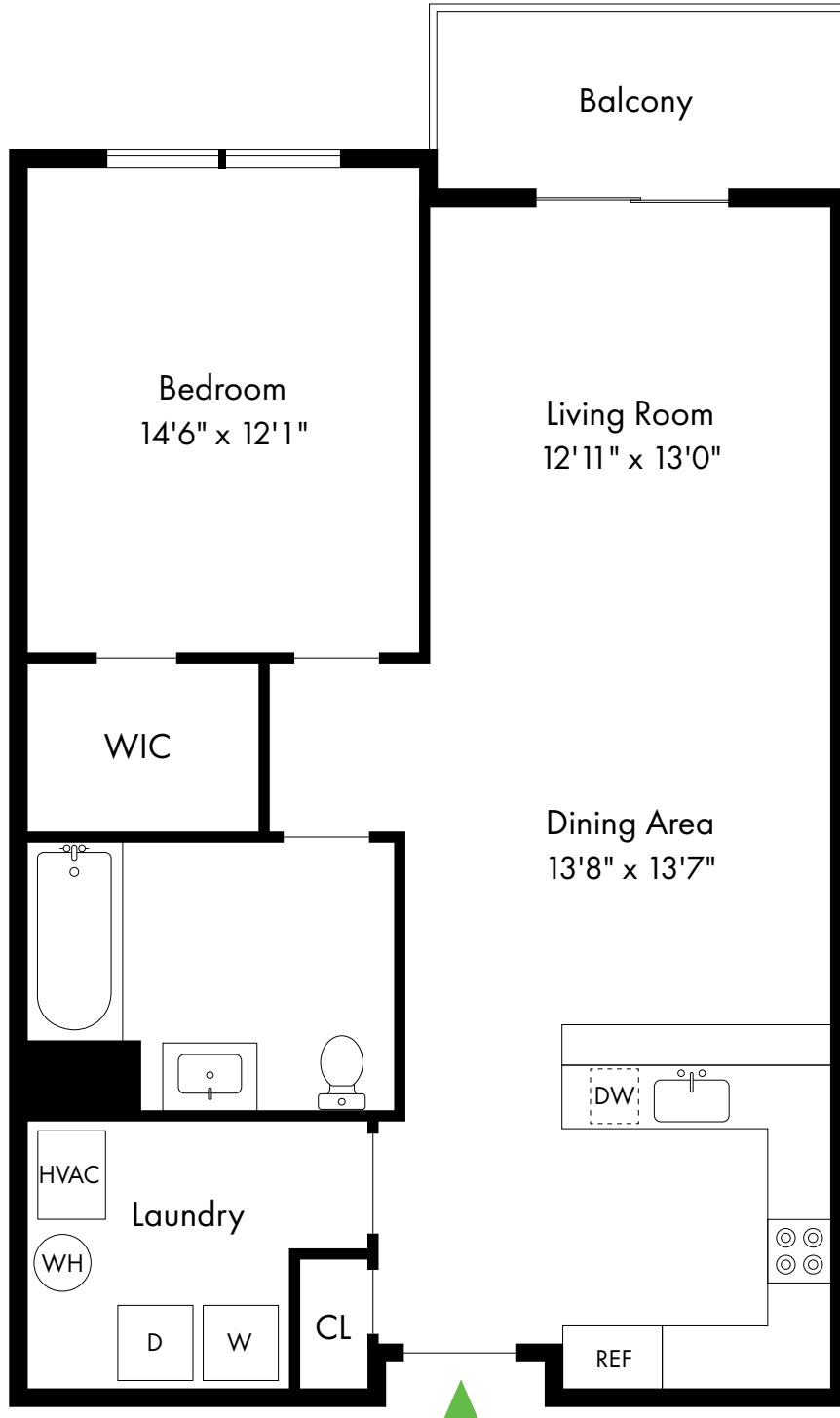
We are an equal opportunity provider. We do not discriminate on the basis of race, color, sex, national origin, religion, handicap or familial status.

Oakes Pond at Bloomfield

1A.2

Bloomfield, NJ

1 Bed, 1 Bath | 900 SF



973.748.1717

www.OakesPondBloomfield.com

Oakes Pond at Bloomfield

1D.2

Bloomfield, NJ

1 Bed, 1 Bath with Den | 1,270 SF

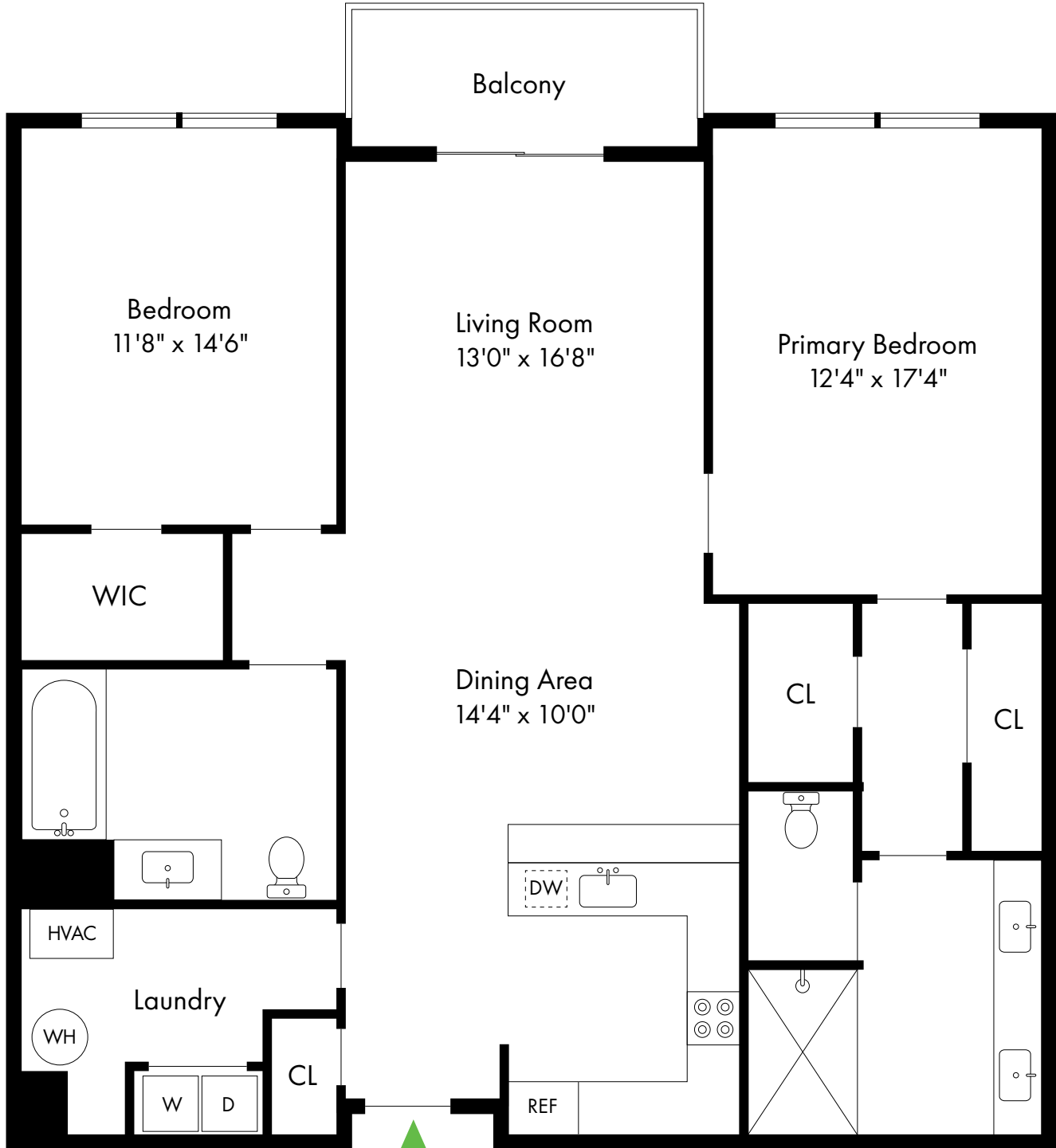


Oakes Pond at Bloomfield

2A.2

Bloomfield, NJ

2 Bed, 2 Bath | 1,340 SF



973.748.1717

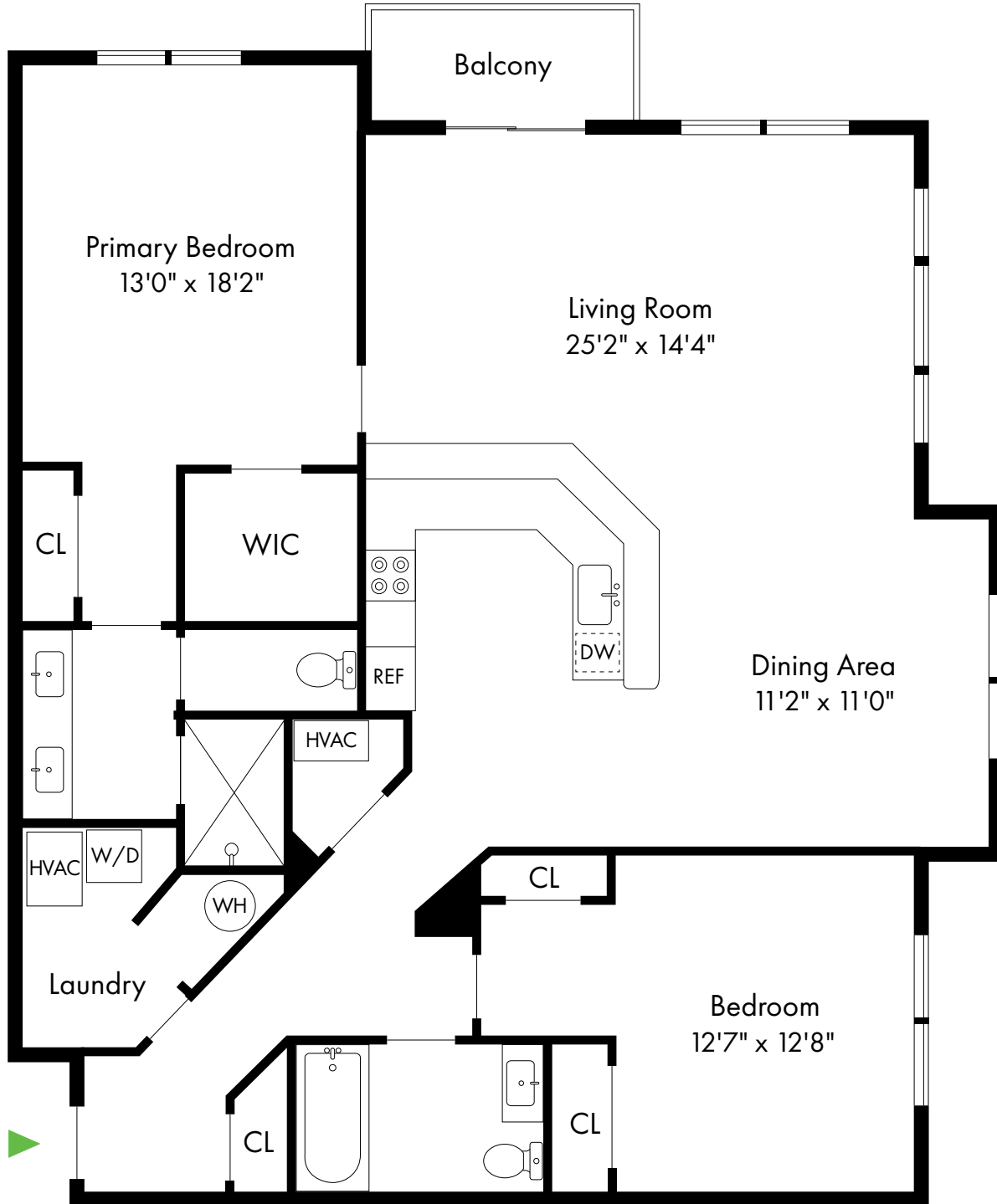
www.OakesPondBloomfield.com

Oakes Pond at Bloomfield

2D.1

Bloomfield, NJ

2 Bed, 2 Bath | 1,630 - 1,697 SF



973.748.1717

www.OakesPondBloomfield.com

Oakes Pond at Bloomfield

2E.2

Bloomfield, NJ

2 Bed, 2 Bath | 1,525 SF

