

ORCHID PARK

LEASING OFFICE

908.916.3395
OrchidParkNJ.com

1325 Terrill Road
Scotch Plains, NJ 07076



ORCHID PARK

SPACIOUS HOMES | RESORT-STYLE AMENITIES | CONVENIENT LOCATION

Discover Orchid Park, a new rental community in the charming town of Scotch Plains, NJ. Choose from a variety of modern apartment layouts, all featuring a balcony, and some offering a separate study or den area. For those seeking a townhouse lifestyle, our townhomes offer two bedrooms, multi-level living, decks, a generous bonus room, and a one-car garage with additional storage space. Orchid Park is thoughtfully designed to create a vibrant community atmosphere. Enjoy resort-style amenities such as a sparkling pool, a cozy fire pit area, a BBQ spot for outdoor gatherings, and a pavilion and playground located near the community clubhouse. Experience the epitome of luxurious living at Orchid Park, where modern amenities and a thriving community come together to create an exceptional residential experience.

Orchid Park offers a stunning selection of spacious one- and two-bedroom rental residences.
Find the perfect floor plan to fit your lifestyle.



All renderings, amenities, existing or future views and photos depicted or otherwise described herein are proposed and conceptual only, and are based upon preliminary development plans, which are subject to withdrawal, revisions, and other changes, without notice. Please inquire within for more details.

5.16.24

Orchid Park

Bedrooms	Name	Baths	Area	Pricing
1	One Bedroom with Office	1	895-912 sq. ft.	\$2,695 - \$2,705
1	One Bedroom	1	802-852 sq. ft.	\$2,495 - \$2,555
1	One Bedroom Corner	1	798-1,012 sq. ft.	\$2,595 - \$2,645
1	One Bedroom Den with Powder Room	1.5	997-1,000 sq. ft.	\$2,795
2	Two Bedroom Corner	2	1,144-1,263 sq. ft.	\$3,320 - \$3,465
2	Two Bedroom	2	1,201-1,204 sq. ft.	\$3,395 - \$3,455
2	Two Bedroom Den	2	1,287-1,307 sq. ft.	\$3,545 - \$3,615
2	Two Bedroom Corner Den	2	1,413-1,539 sq. ft.	\$3,945 - \$3,960
2	Two Bedroom Corner Deluxe	2	1,736 sq. ft.	\$4,145 - \$4,205
2	Townhome with Bonus Room	2.5	1,941 sq. ft.	\$4,795
2	Brownstone with Bonus Room	2.5	1,941 sq. ft.	\$4,895
2	Townhome_End with Bonus Room	2.5	1,980 sq. ft.	\$5,095
2	Brownstone End with Bonus Room	2.5	1,980 sq. ft.	\$5,195

*All prices are subject to change.

Apartment Amenities

- Eat-In Kitchen
- Generous Closet Space
- Island Kitchens
- Quartz Kitchen Countertops
- Spacious Floor Plans
- Voluminous 9' High Ceilings
- Extra Storage Space Available
- Individual, energy efficient water heater
- LED Lighting
- Ring Home Security Doorbells (Townhomes)
- Spacious Walk-In Closet
- Garages Available
- Individually Controlled Central Air & Heat
- Private Patio or Balcony
- Smoke-Free
- Stainless Steel Designer Appliances

Community Amenities

- 24-Hour Emergency Maintenance
- Controlled Access at Building Entry
- Library
- Playground
- Yoga Room
- Clubhouse
- Covered Parking
- Pet-Friendly
- Smoke-Free Community
- Common Lounge
- Elevators
- Picnic/Barbecue Area
- Swimming Pool

Appliances

- Dishwasher
- Gas Oven
- In-Suite Washers and Dryers
- Microwave
- Oven
- Refrigerator/Freezer

Visit our Website - www.OrchidParkNJ.com

Rental Office Hours

Monday 10 - 6	Tuesday 10 - 6	Wednesday 10 - 6	Thursday 10 - 6	Friday 10 - 6	Saturday 10 - 5	Sunday 10 - 5
------------------	-------------------	---------------------	--------------------	------------------	--------------------	------------------

When you decide to rent with Garden Communities, the following items will be required when you submit your application:

- Non-refundable online application processing Fee. \$75 per applicant
- An online deposit of \$500 in order to reserve an apartment. This amount will be applied to your first month's rent upon approval and ONLY refunded if your application is declined.
- A valid photo ID, social security card and two current pay stubs.

We are an equal opportunity provider. We do not discriminate on the basis of race, color, sex, national origin, religion, handicap or familial status.

1 BEDROOM CORNER

APPROX. 1000 SQ. FT.

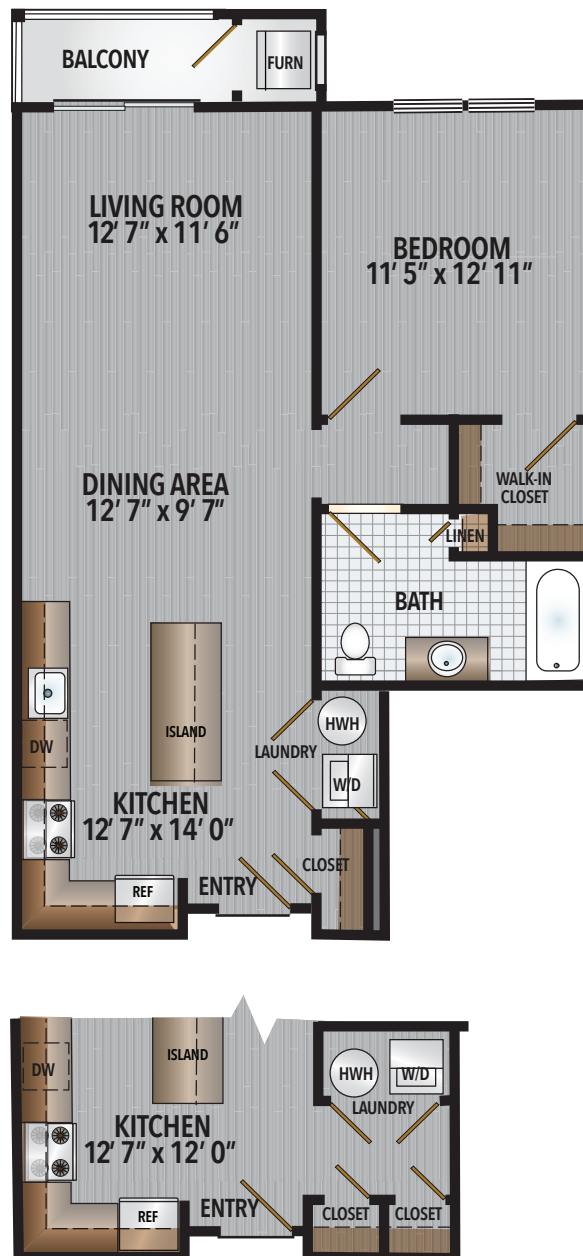


2 BEDROOM CORNER DELUXE WITH DEN
APPROX. 1750 SQ. FT.



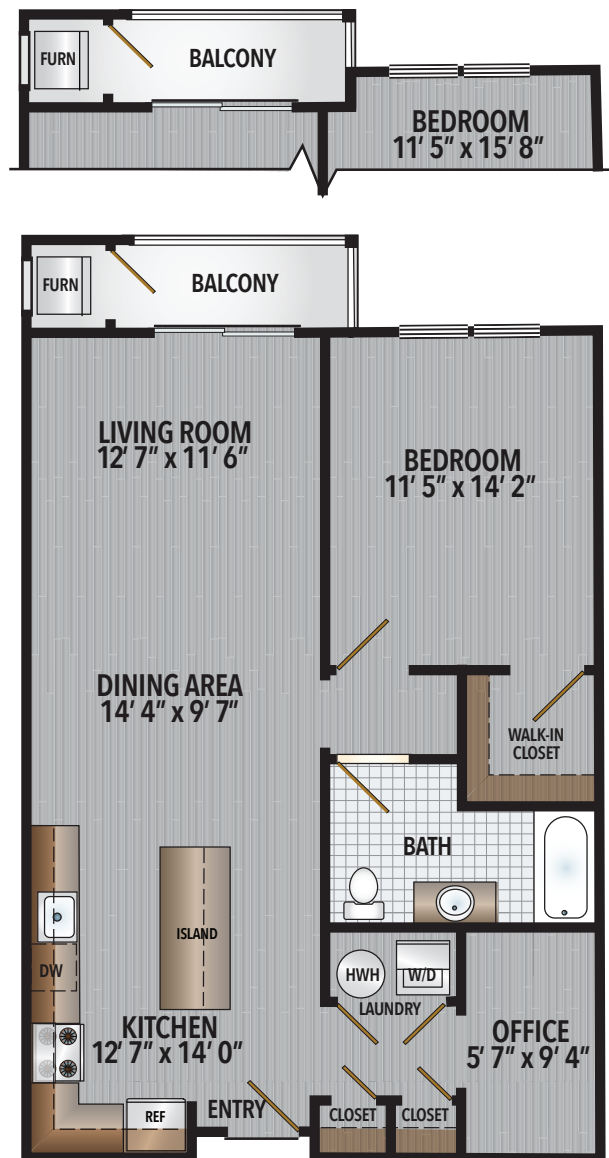
1 BEDROOM

APPROX. 800-840 SQ. FT.



1 BEDROOM WITH OFFICE

APPROX. 900 SQ. FT.



2 BEDROOM CORNER WITH DEN

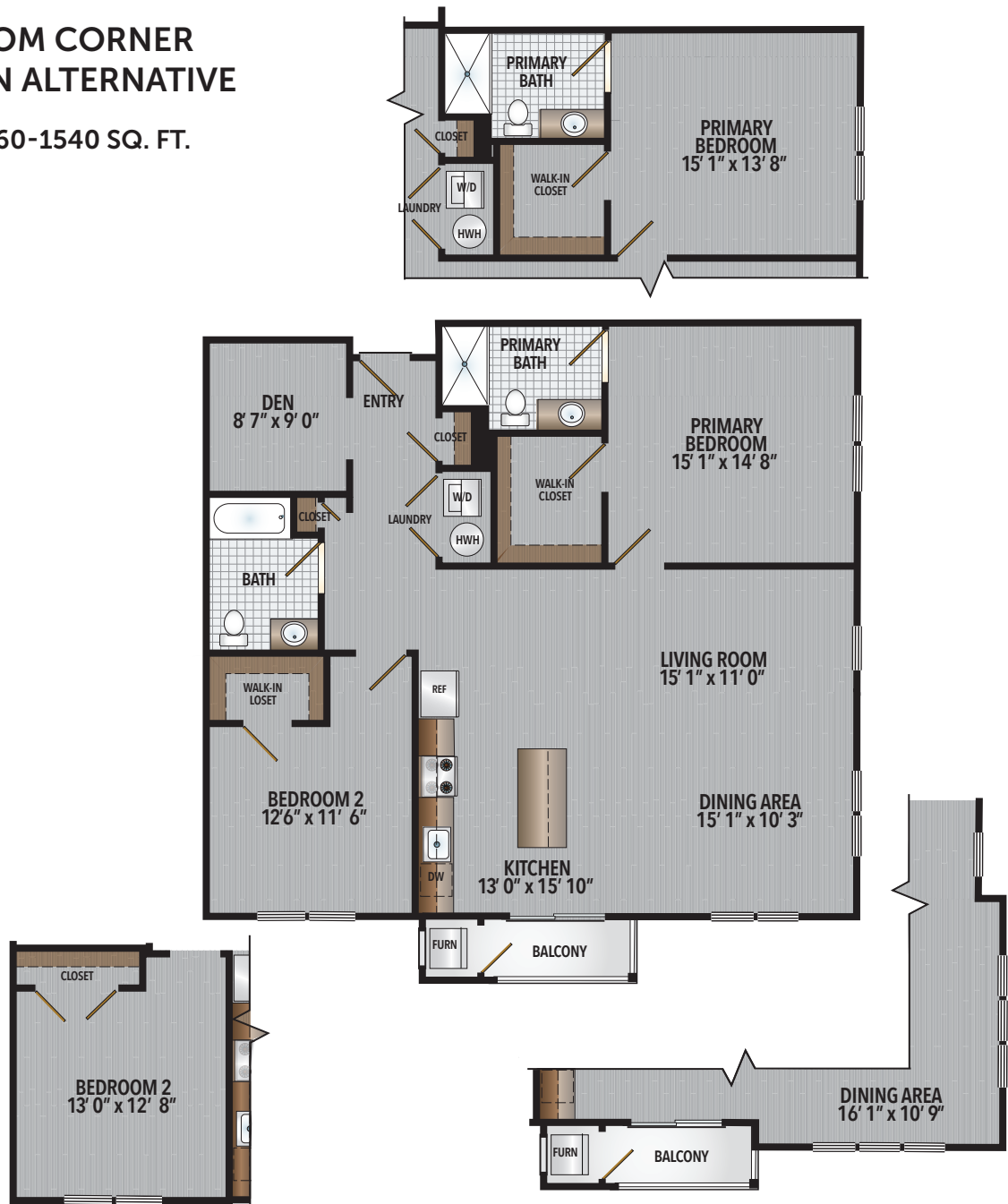
APPROX. 1440-1475 SQ. FT.



*Extended Living Room Available on Upper Levels

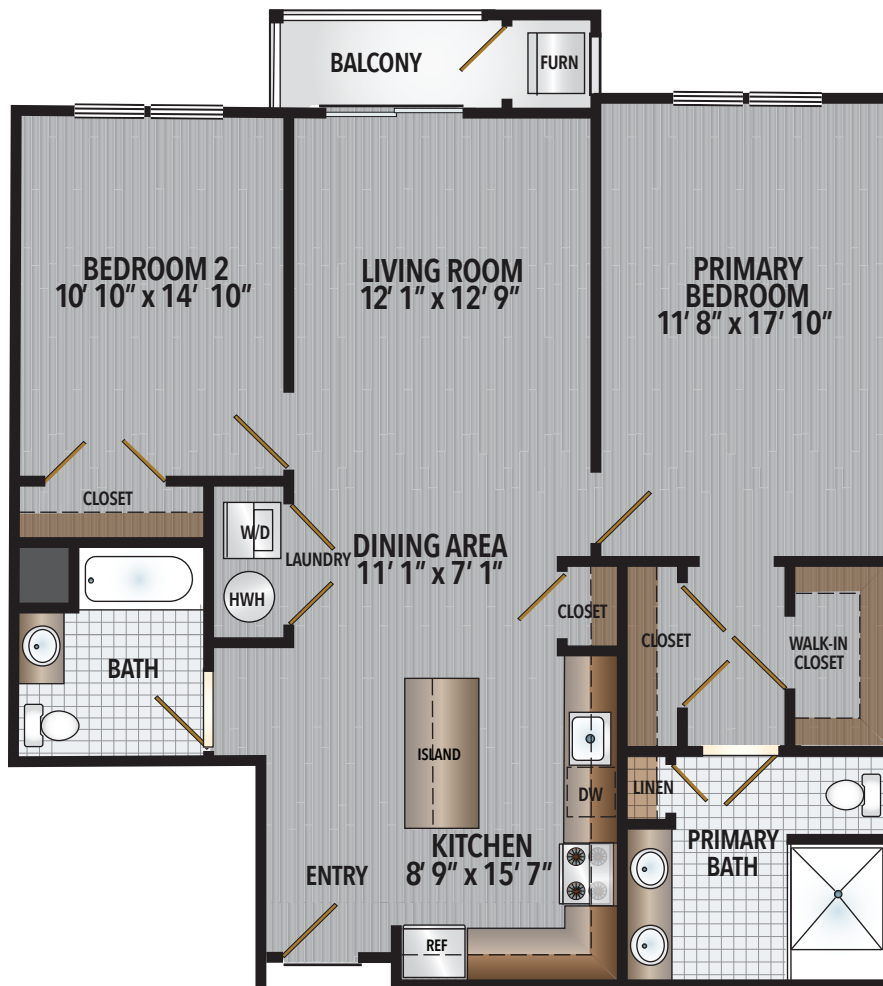
**2 BEDROOM CORNER
WITH DEN ALTERNATIVE**

APPROX. 1460-1540 SQ. FT.

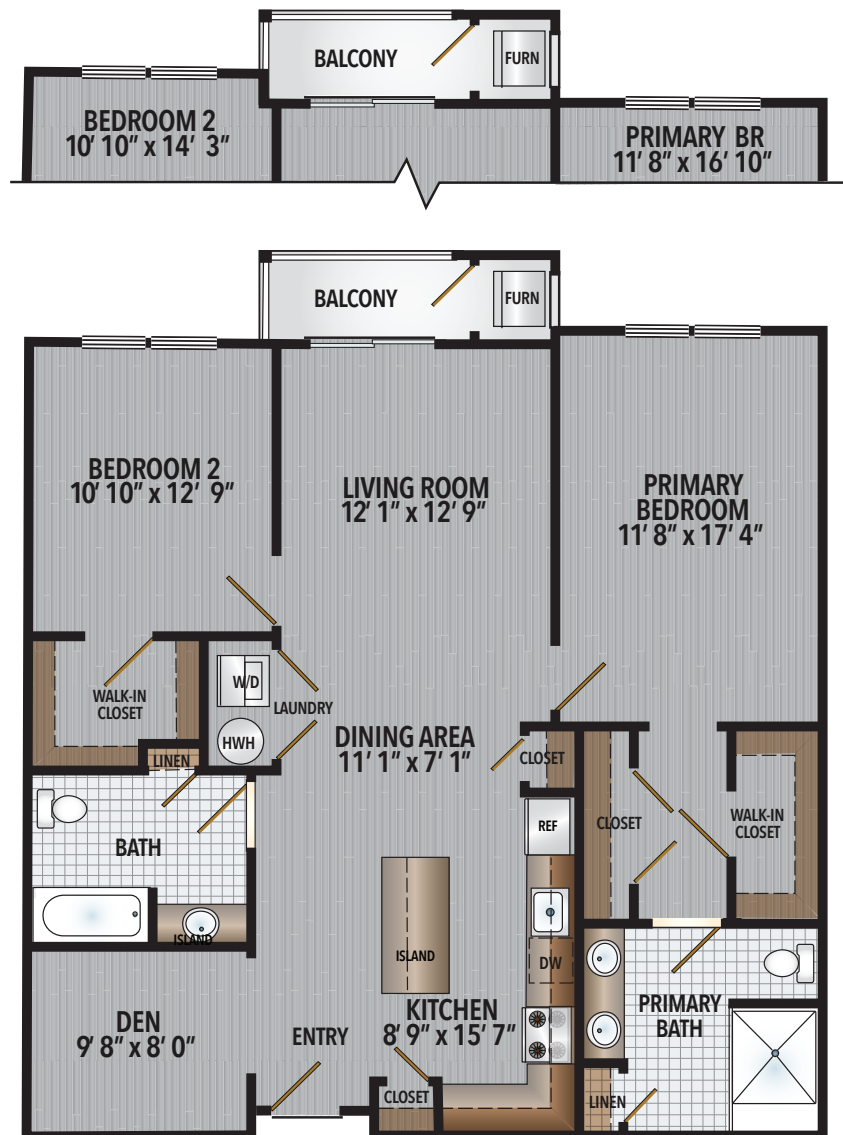


*Extended Living Room Available on Upper Levels

2 BEDROOM
APPROX. 1200 SQ. FT.

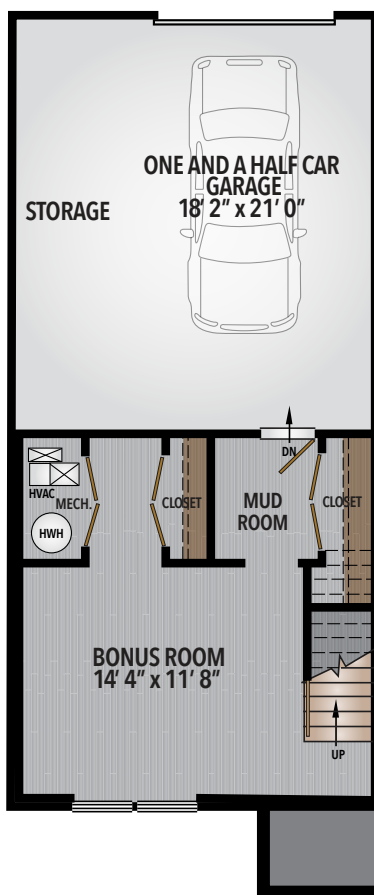


APPROX. 1300 SQ. FT.

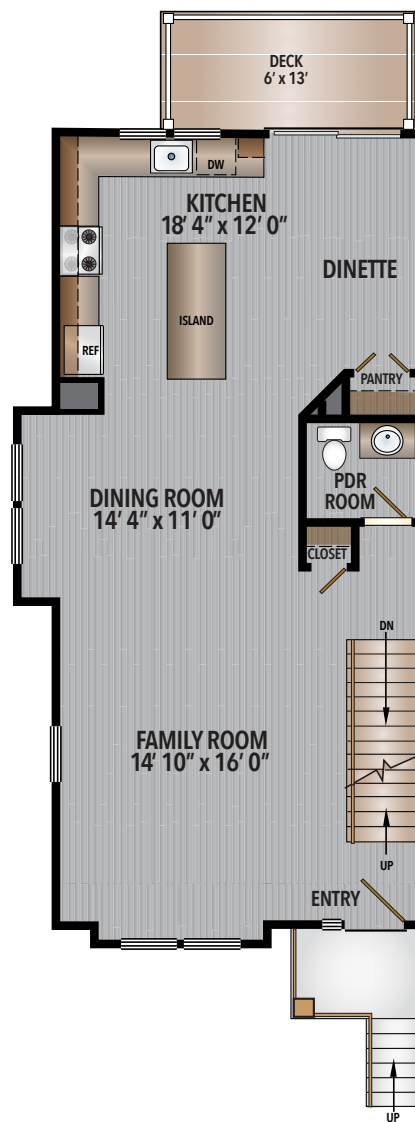


BROWNSTONE END
APPROX. 2,000 SQ. FT.

LOWER LEVEL



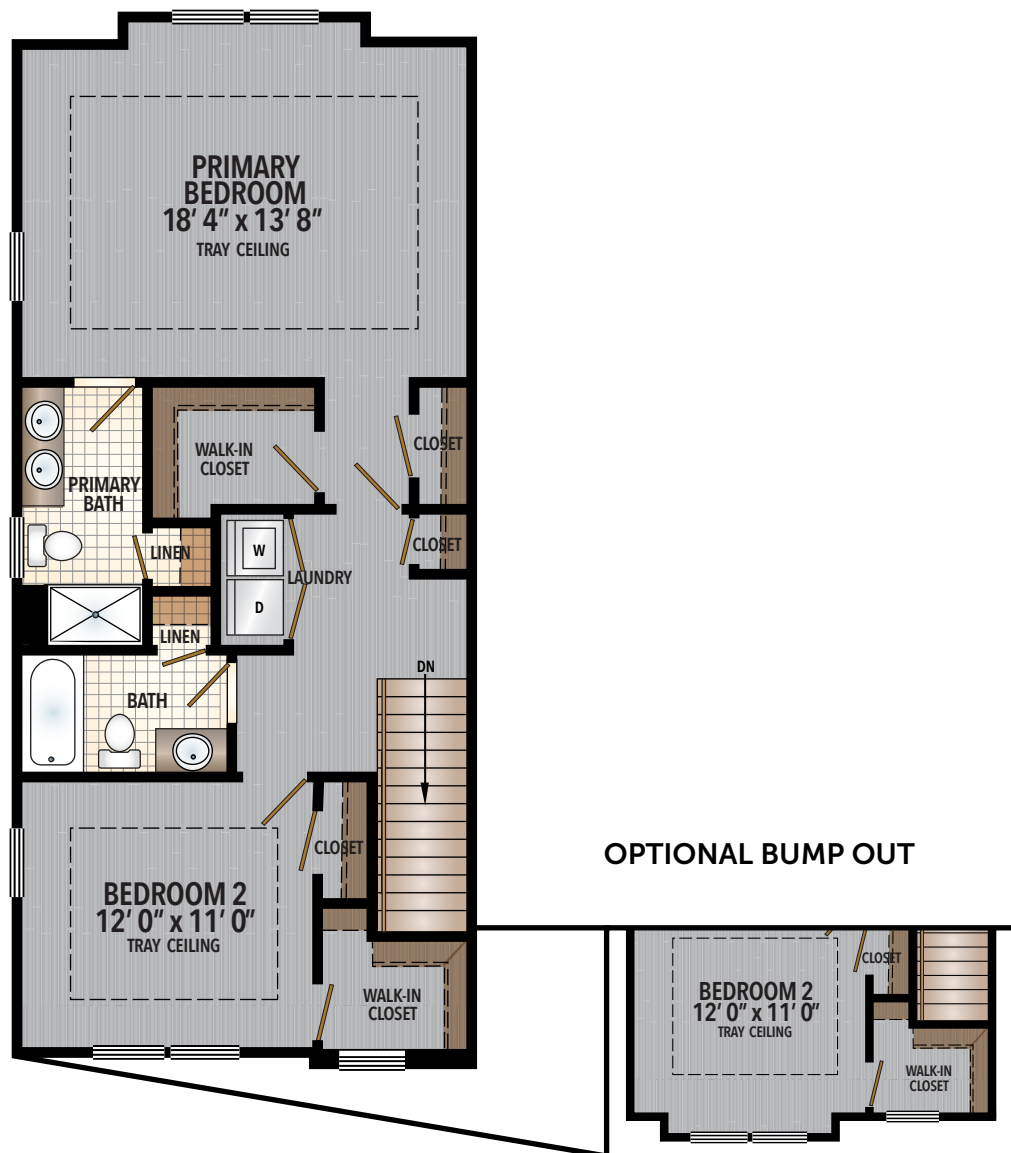
FIRST FLOOR



**OPTIONAL
BUMP OUT**

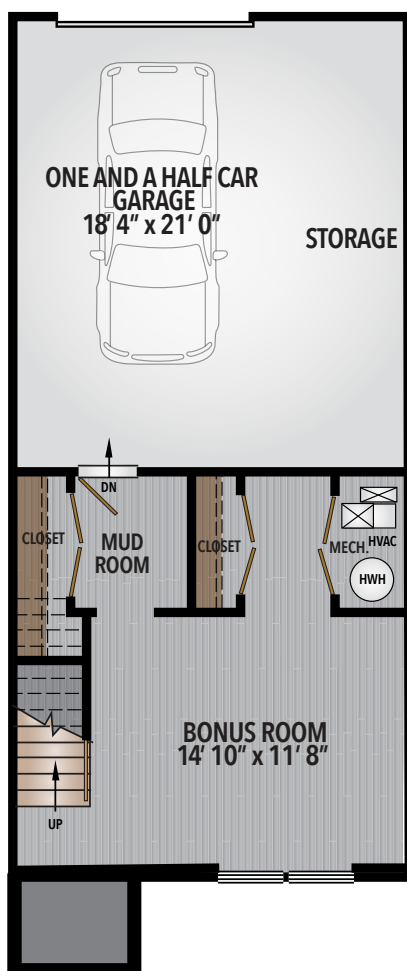
BROWNSTONE END
APPROX. 2,000 SQ. FT.

SECOND FLOOR

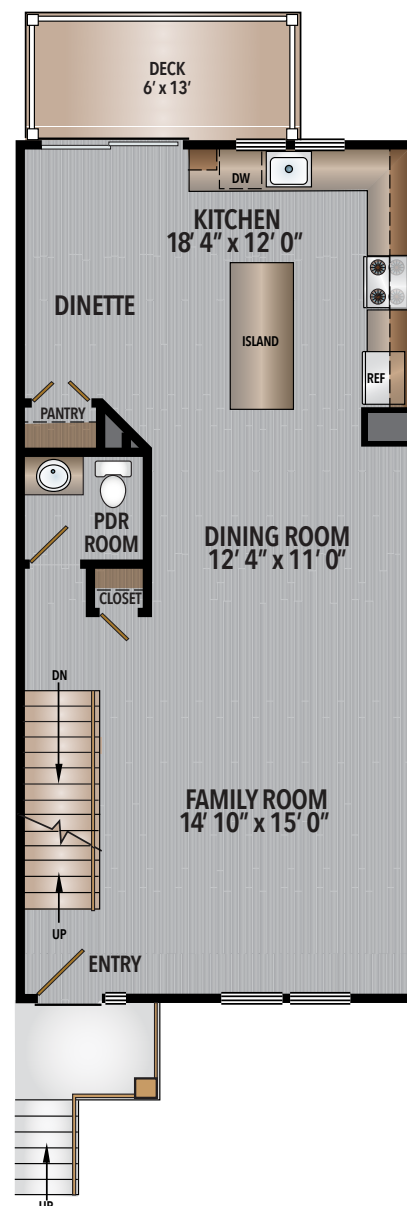


BROWNSTONE
APPROX. 2,000 SQ. FT.

LOWER LEVEL

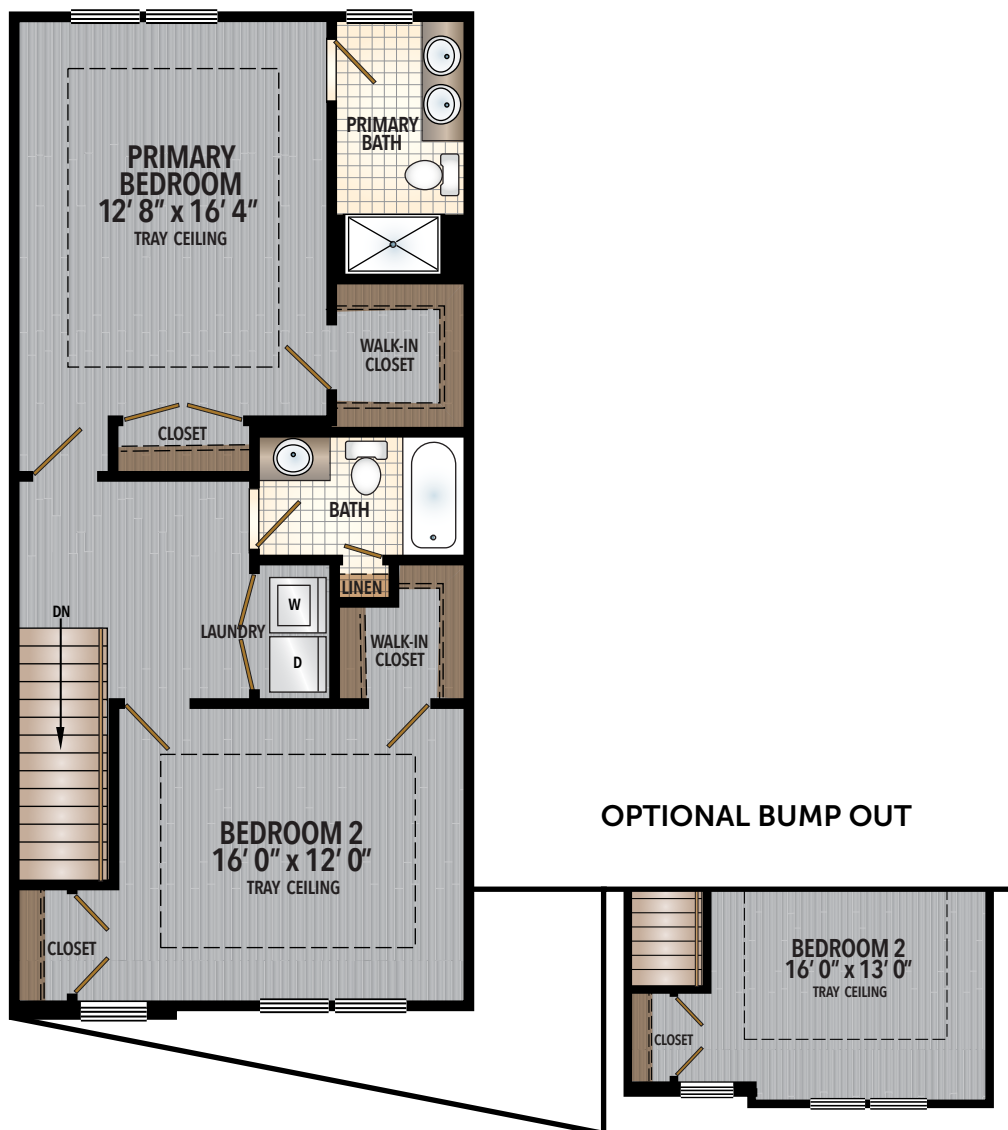


FIRST FLOOR



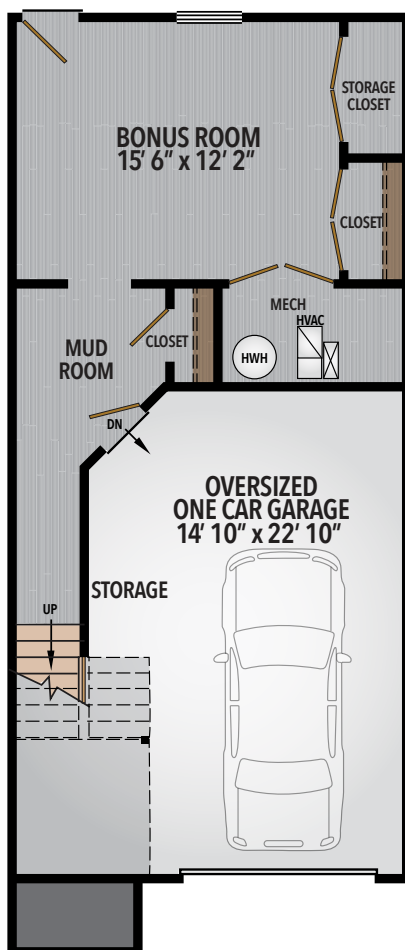
BROWNSTONE
APPROX. 2,000 SQ. FT.

SECOND FLOOR

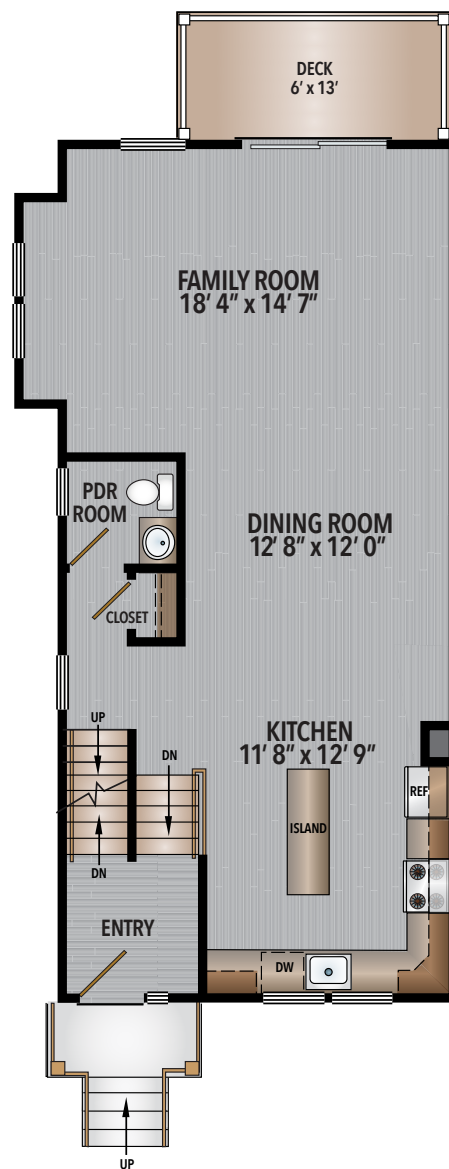


TOWNHOME END
APPROX. 2,000 SQ. FT.

LOWER LEVEL

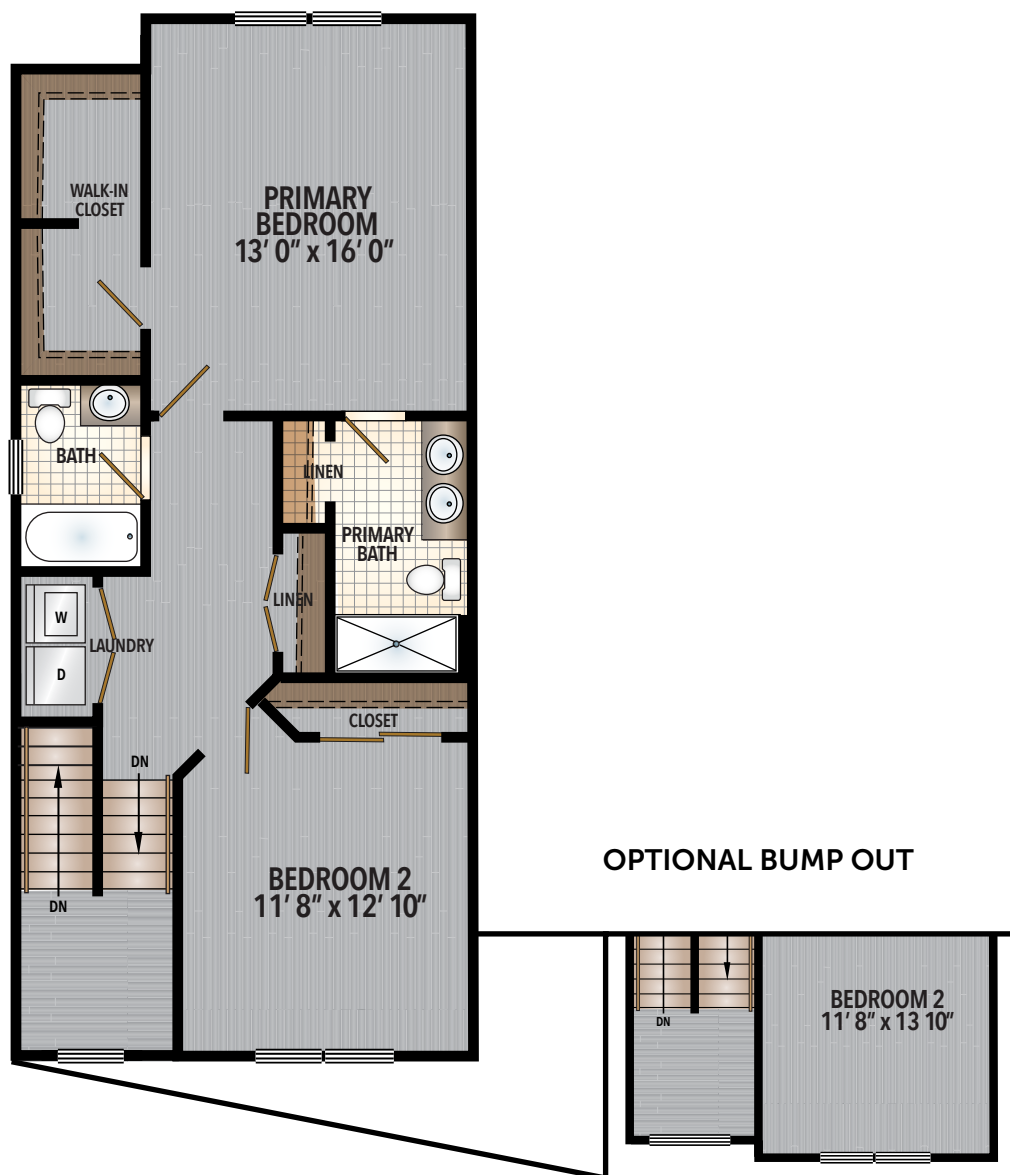


FIRST FLOOR



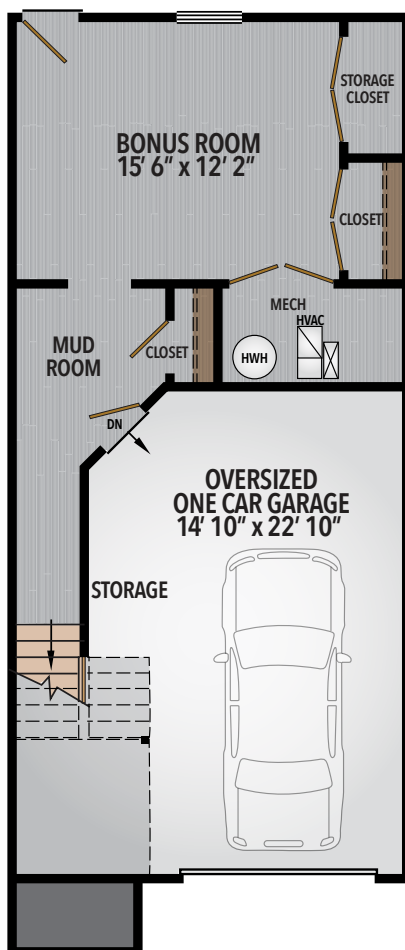
TOWNHOME END
APPROX. 2,000 SQ. FT.

SECOND FLOOR

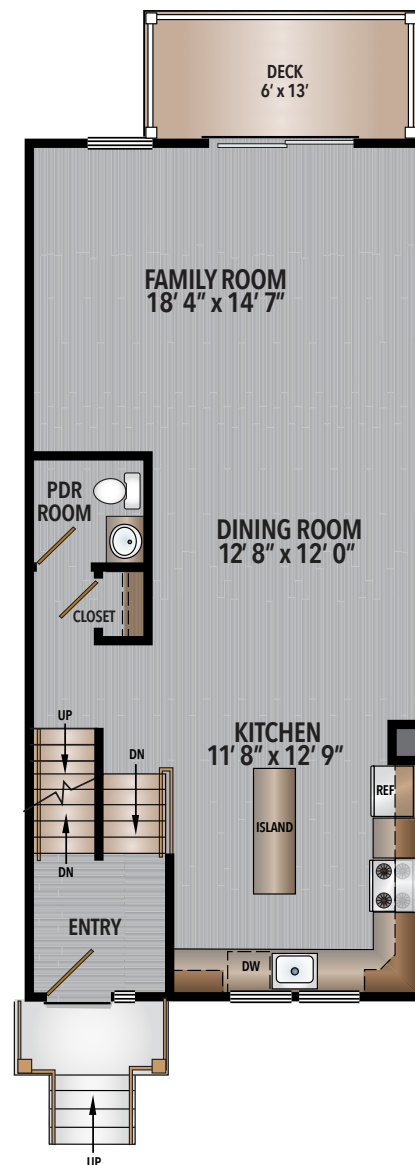


TOWNHOME
APPROX. 2,000 SQ. FT.

LOWER LEVEL



FIRST FLOOR



TOWNHOME
APPROX. 2,000 SQ. FT.

SECOND FLOOR

