

PARKSIDE
AT
WESTFIELD

LUXURY RESIDENCES

LEASING OFFICE

908.860.8116

RentParksideAtWestfieldNJ.com

524 Springfield Avenue
Westfield, NJ 07090



PARKSIDE AT WESTFIELD

SPACIOUS HOMES | UPSCALE AMENITIES | CONVENIENT LOCATION

Sophisticated and welcoming, Parkside at Westfield offers resort-style living to the quaint and historic town of Westfield, moments from the train. Immerse yourself in multi-seasonal amenity spaces that blur the boundaries between indoor and outdoor living, designed to meet your every need. With an elegant collection of one-, two- and three-bedroom residences — including layouts with fireplaces — Parkside is thoughtfully designed with a variety of lifestyles in mind. Discover a treasure trove of leisure areas, including our outdoor fire pit, our proximity to local parks, and a BBQ and lounge area. With proximity to downtown Westfield— not to mention effortless connectivity with New York City — Parkside at Westfield brings the best within reach.

Parkside at Westfield offers a stunning selection of spacious one-, two-, and three-bedroom rental residences. Find the perfect floor plan to fit your lifestyle.



All renderings, amenities, existing or future views and photos depicted or otherwise described herein are proposed and conceptual only, and are based upon preliminary development plans, which are subject to withdrawal, revisions, and other changes, without notice. Please inquire within for more details.

1.30.25

Parkside at Westfield

Bedrooms	Name	Baths	Area	Pricing
1	One Bedroom	1	985 sq. ft.	\$3,665 - \$3,895
2	Two Bedroom Den	2	1,478 sq. ft.	\$4,695 - \$5,195
2	Two Bedroom Corner	2	1,367 sq. ft.	\$4,395 - \$5,195
2	Two Bedroom Den XL	2	1,710 sq. ft.	\$4,995 - \$5,245
2	Two Bedroom Den Corner LUX	2	1,501 sq. ft.	\$5,295 - \$5,995
2	Two Bedroom Den XL Corner	2	1,944 sq. ft.	\$5,495 - \$5,695
3	Three Bedroom Corner Lux	2	1,781 sq. ft.	\$6,195 - \$6,795

*All prices are subject to change.

Apartment Amenities

- Balcony (Select Apartments)
- Quartz Kitchen Countertops
- TV Wall Mount Ready (Select Apartments)
- Dens in Select Residences
- Spacious Walk-In Closet
- Washer/Dryer in Every Home
- Fireplace (select models)
- Stainless Steel Appliances

Community Amenities

- Assigned Parking Spot with EV Charger (Select Apartments)
- Elevators
- Lounge/Kitchen
- Playground
- BBQ Area
- Fitness Center
- Outdoor Courtyards with Grills and Fire Pit
- Yoga Room
- Clubhouse
- Library
- Pet-Friendly

Appliances

- Dishwasher
- Refrigerator/Freezer
- Microwave
- Washer & Dryer in Apartment
- Oven/Range

Visit our Website - RentParksideAtWestfieldNJ.com

Rental Office Hours

Monday 10-6	Tuesday 10-6	Wednesday 10-6	Thursday 10-6	Friday 10-6	Saturday 10-5	Sunday 10-5
----------------	-----------------	-------------------	------------------	----------------	------------------	----------------

When you decide to rent with Garden Communities, the following items will be required when you submit your application:

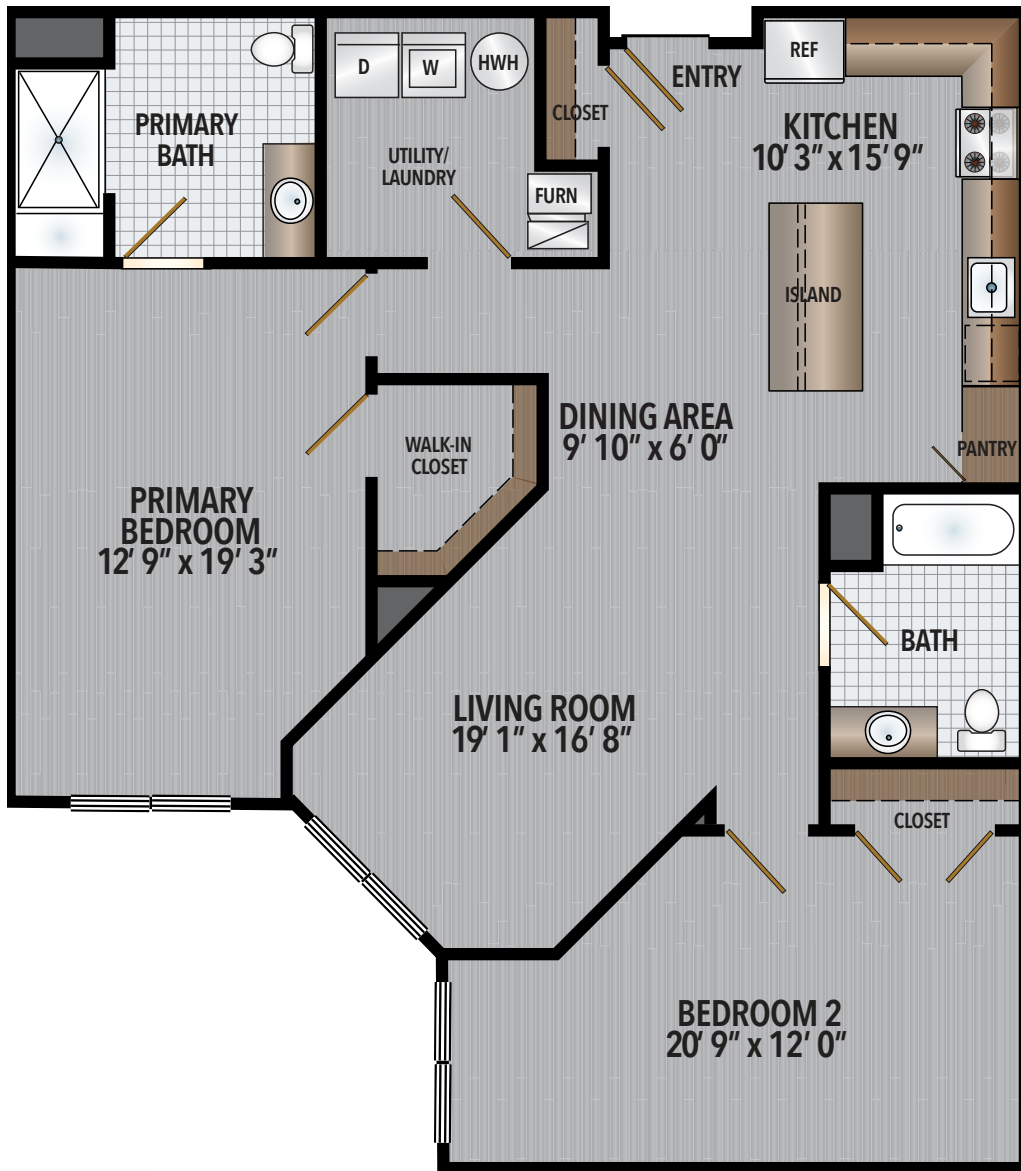
- Non-refundable online application processing Fee. \$50 per applicant
- An online deposit of \$200 in order to reserve an apartment. This amount will be applied to your first month's rent upon approval and ONLY refunded if your application is declined.
- A valid photo ID and social security card

We are an equal opportunity provider. We do not discriminate on the basis of race, color, sex, national origin, religion, handicap or familial status.

PARKSIDE
AT
WESTFIELD
LUXURY RESIDENCES

2 Bedroom Corner

Square footage range: Approx. 1370



Approximate calculations of square footages are deemed reliable, but not guaranteed.



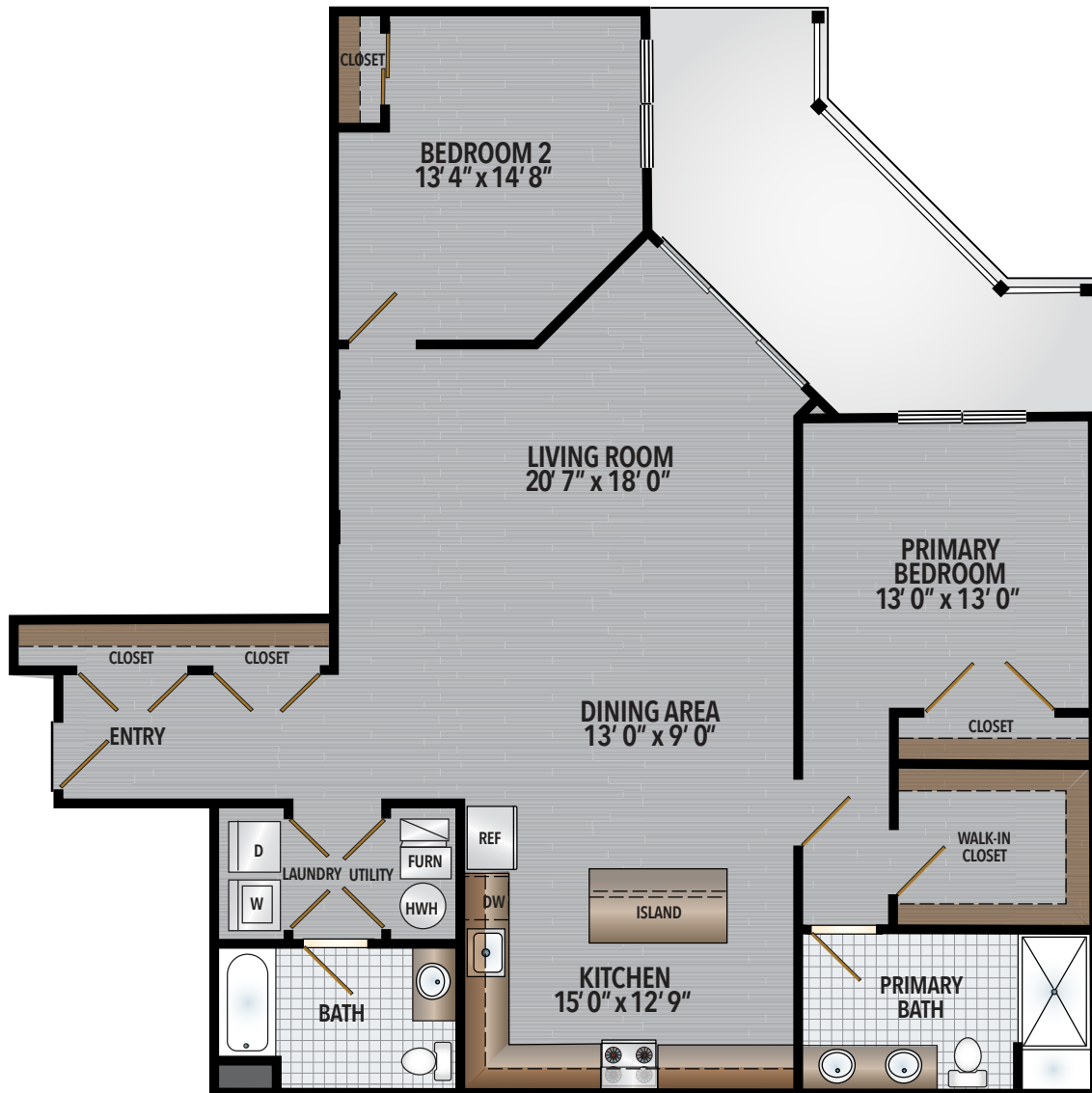
Leasing 908-379-3500
RentParksideAtWestfieldNJ.com



PARKSIDE
AT
WESTFIELD
LUXURY RESIDENCES

2 Bedroom Corner

Square footage range: Approx. 1575 • Balcony: 270 sq. ft.



Approximate calculations of square footages are deemed reliable, but not guaranteed.



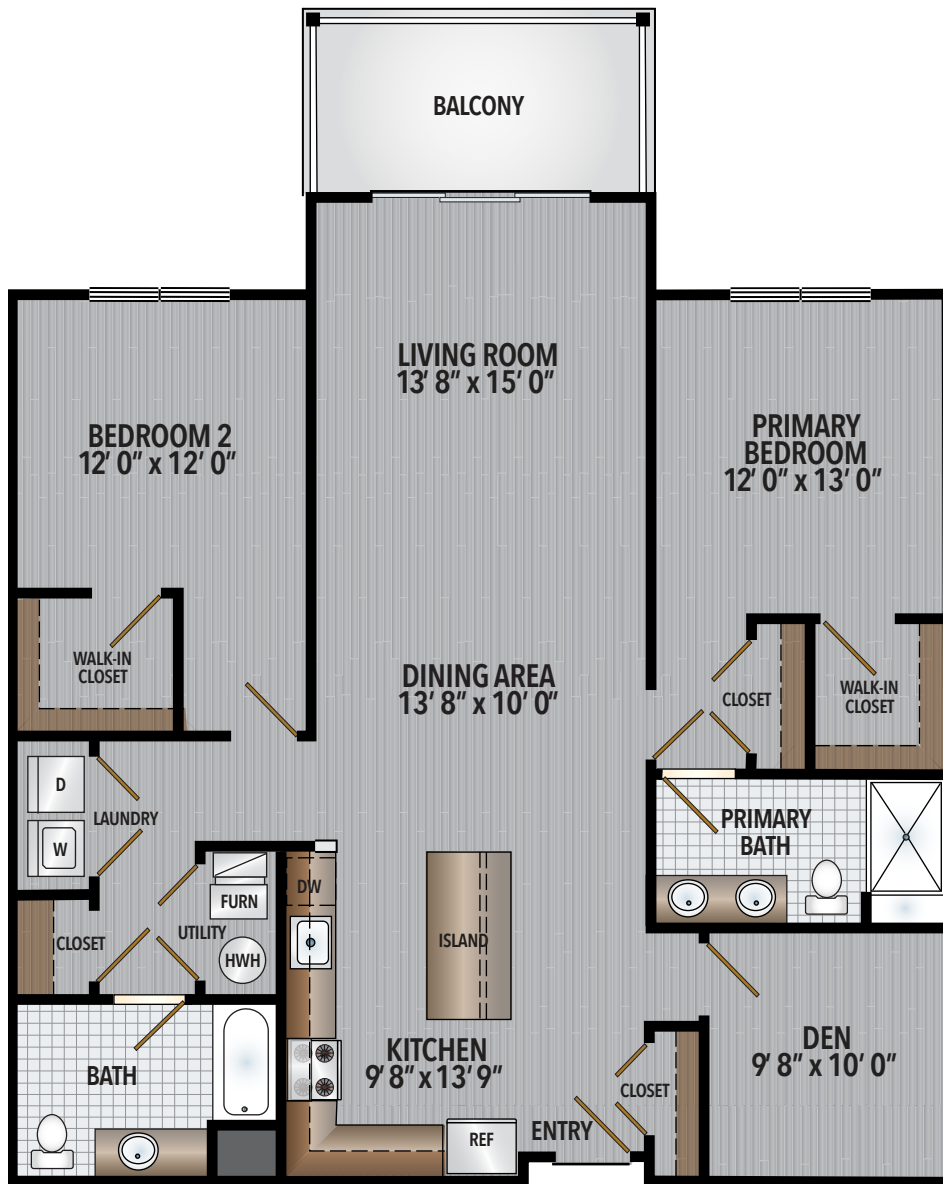
Leasing 908-379-3500
RentParksideAtWestfieldNJ.com



PARKSIDE
AT
WESTFIELD
LUXURY RESIDENCES

2 Bedroom Den

Square footage range: Approx. 1480-1500 • Balcony: 115 sq. ft.



Approximate calculations of square footages are deemed reliable, but not guaranteed.



Leasing 908-379-3500
RentParksideAtWestfieldNJ.com



PARKSIDE
AT
WESTFIELD
LUXURY RESIDENCES

2 Bedroom Den Corner LUX

Square footage range: Approx. 1520-1700 • Balcony: 150 sq. ft.
Upgraded Fireplace Unit



Approximate calculations of square footages are deemed reliable, but not guaranteed.



Leasing 908-379-3500
RentParksideAtWestfieldNJ.com



PARKSIDE
AT
WESTFIELD
LUXURY RESIDENCES

2 Bedroom Den XL

Square footage range: Approx. 1720 • Balcony: 130 sq. ft.



Approximate calculations of square footages are deemed reliable, but not guaranteed.



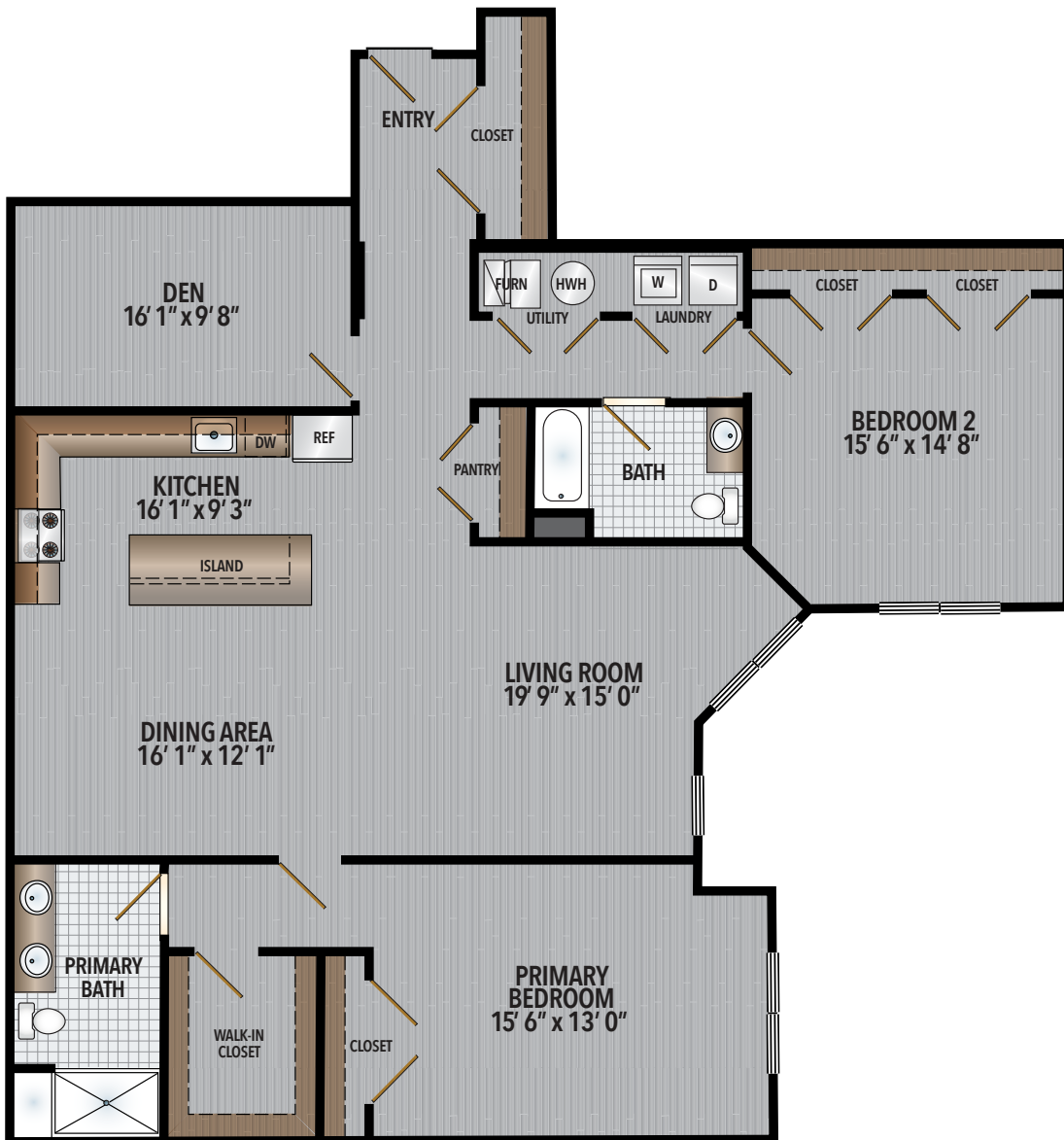
Leasing 908-379-3500
RentParksideAtWestfieldNJ.com



PARKSIDE
AT
WESTFIELD
LUXURY RESIDENCES

2 Bedroom Den XL Corner

Square footage range: Approx. 1945



Approximate calculations of square footages are deemed reliable, but not guaranteed.



Leasing 908-379-3500
RentParksideAtWestfieldNJ.com



PARKSIDE
AT
WESTFIELD
LUXURY RESIDENCES

3 Bedroom Corner LUX

Square footage range: Approx. 1800-1860 • Balcony: 130 sq. ft.
Upgraded Fireplace Unit



Approximate calculations of square footages are deemed reliable, but not guaranteed.



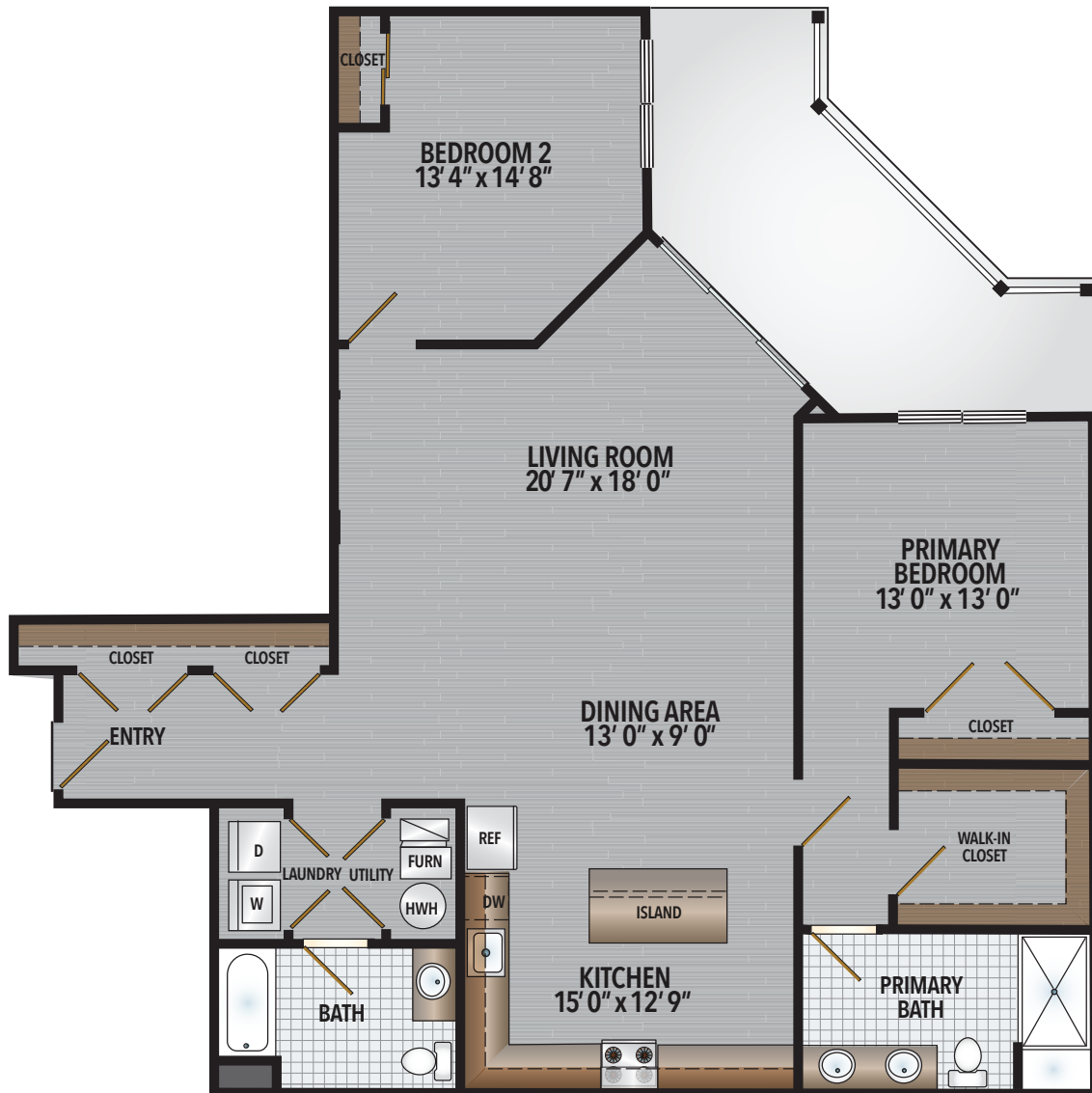
Leasing 908-379-3500
RentParksideAtWestfieldNJ.com



PARKSIDE
AT
WESTFIELD
LUXURY RESIDENCES

2 Bedroom Corner

Square footage range: Approx. 1575 • Balcony: 270 sq. ft.



Approximate calculations of square footages are deemed reliable, but not guaranteed.

Leasing 908-379-3500
premierdevelopment.com

