

# PARKWOOD VILLAGE

1 Parkwood Drive, South Amboy, NJ 08879 (732) 860-5308



Parkwood Village is conveniently located just off of Route 9 in the Middlesex County, Town of South Amboy. The complex features 500 spacious one, two bedroom apartments and two bedroom TownHome residences that range in size from 845 to 1820 square feet and boast a number of impressive amenities including air conditioning and balcony or patio. Community amenities include swimming pool, barbecue and picnic area, playgrounds, free parking, laundry facilities throughout the complex and 24-hour emergency maintenance. Residents also enjoy being steps from NJ Transit Old Bridge Park 'n Ride, and a number of major highways including Routes 9, 34 and 35 and the Garden State Parkway.

[www.ParkwoodVillageNJ.com](http://www.ParkwoodVillageNJ.com) (732) 860-5308



WE ARE AN EQUAL HOUSING OPPORTUNITY PROVIDER. WE DO NOT DISCRIMINATE ON THE BASIS OF RACE, COLOR, SEX, NATIONAL ORIGIN, RELIGION, HANDICAP OR FAMILIAL STATUS.

WF-ParkwoodVill06262020



# Parkwood Village

Bedrooms	Name	Baths	Area	Pricing
1	One Bedroom	1	845 sq. ft.	\$1,760 - \$1,960
1	One Bedroom with Rec Room	1	845 sq. ft.	\$2,155 - \$2,185
1	One Bedroom Den	1	945 sq. ft.	\$2,175
1	One Bedroom with Den and Rec Room	1	1,610 sq. ft.	\$2,265 - \$2,295
2	Two Bedroom with Rec Room	1.5	1,970 sq. ft.	\$2,570 - \$2,800
2	Two Bedroom Townhome with Rec Room	1.5	1,220 sq. ft.	\$2,885
2	Two Bedroom	1.5	1,160 sq. ft.	\$2,260 - \$2,610
2	Two Bedroom TownHome	1.5	1,220 sq. ft.	\$2,805

\*All prices are subject to change.

## Apartment Amenities

- Air Conditioning
- Private Patio or Balcony

## Community Amenities

- 24-Hour Emergency Maintenance
- Laundry Facilities
- Playground
- Tennis Court(s)
- Walking Distance to NJT Old Bridge Park n Ride
- Basketball Court(s)
- Natural Gas
- Security Lighting
- Verizon FIOS Available
- Cable Ready
- Picnic/Barbecue Area
- Swimming Pool
- Volleyball Court

## Appliances

- Dishwasher
- Refrigerator/Freezer
- Oven/Range
- Range Hood

**Visit our Website - [www.ParkwoodVillageNJ.com](http://www.ParkwoodVillageNJ.com)**

## Rental Office Hours

Monday 8:30-4:30	Tuesday 8:30-7:00	Wednesday 8:30-4:30	Thursday 8:30-4:30	Friday 8:30-4:00	Saturday 8:00-2:00	Sunday Closed
---------------------	----------------------	------------------------	-----------------------	---------------------	-----------------------	------------------

When you decide to rent with Garden Communities, the following items will be required when you submit your application:

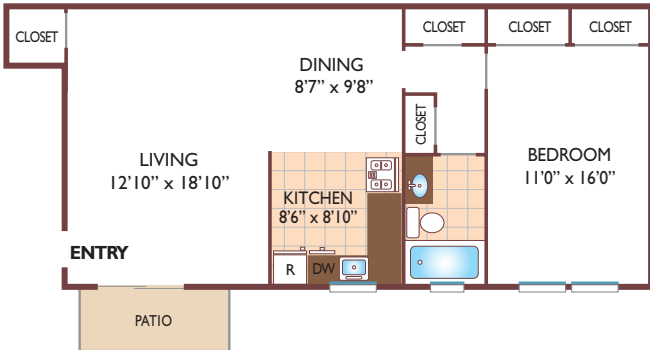
- Non-refundable online application processing Fee. \$50 per applicant
- An online deposit of \$200 in order to reserve an apartment. This amount will be applied to your first month's rent upon approval and ONLY refunded if your application is declined.
- A valid photo ID, social security card and two current pay stubs.

We are an equal opportunity provider. We do not discriminate on the basis of race, color, sex, national origin, religion, handicap or familial status.

# Parkwood Village

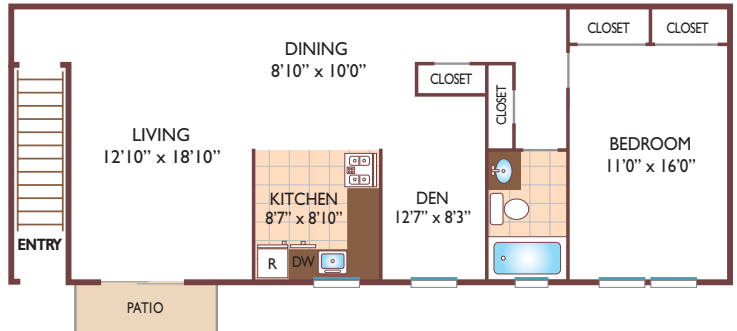
## One Bedroom Floor Plan

Ground Level Unit  
with 1 Bath, 845 sq. ft.



## One Bedroom Floor Plan

Upper Level, with Den  
with 1 Bath, 945 sq. ft.



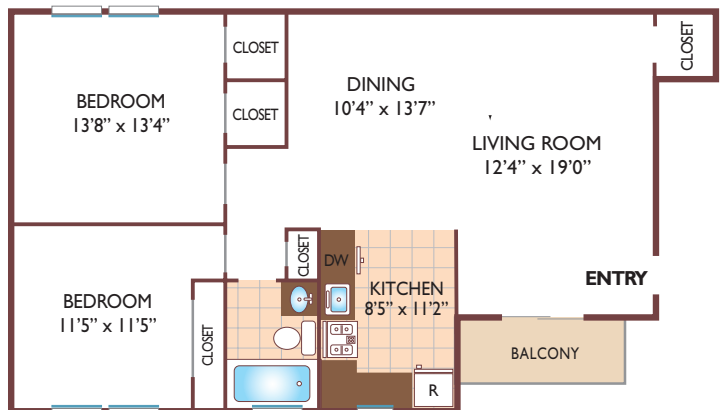
## Two Bedroom Floor Plan

Townhome  
with 1½ Baths, 1220 sq. ft.



## Two Bedroom Floor Plan

Ground Level Unit  
with 1.5 Bath, 1160 sq. ft.



All dimensions, positions, locations and details are approximate.

All rent prices and community information subject to change.

