

PONDVIEW ESTATES

LEASING OFFICE

973.264.9295
PondviewEstatesNJ.com

100 Julia Drive
Wharton, NJ 07885



PONDVIEW ESTATES

SPACIOUS HOMES | RESORT-STYLE AMENITIES | CONVENIENT LOCATION

Nestled amid 220 acres of majestic woodlands in Northwest Morris County, Pondview Estates in Rockaway Township offers a truly remarkable rental lifestyle that combines a stunning selection of townhome and apartment residences with unsurpassed lifestyle amenities and an incomparably convenient location. Meticulously planned, Pondview Estates is designed as a series of small, interconnected residential villages, each one offering vistas of the community's scenic natural beauty. Residents can choose from a variety of housing options including luxurious two and three-bedroom townhomes with center-island kitchens, balconies, basements and garages with EV chargers or incredibly open and spacious two-story apartment residences that feature light-filled interiors, soaring nine-foot ceilings, eat-in kitchens, washers and dryers, resident climate control and either a basement or loft. Living at Pondview Estates is almost like staying at a year-round resort!

Pondview Estates offers a stunning selection of spacious one-, two-, and three-bedroom rental residences. Find the perfect floor plan to fit your lifestyle.



2.8.24

All renderings, amenities, existing or future views and photos depicted or otherwise described herein are proposed and conceptual only, and are based upon preliminary development plans, which are subject to withdrawal, revisions, and other changes, without notice. Please inquire within for more details.



Pondview Estates

| Bedrooms | Name | Baths | Area | Pricing |
|----------|-------------------------------|-------|---------------------|-------------------|
| 1 | One Bedroom with Basement | 1.5 | 898-1,057 sq. ft. | \$2,850 |
| 1 | One Bedroom with Loft | 1.5 | 1,348-1,495 sq. ft. | \$2,850 |
| 1 | One Bedroom | 1 | 662-730 sq. ft. | \$2,450 |
| 1 | One Bedroom with Den and Loft | 1.5 | 1,644-1,751 sq. ft. | \$3,000 |
| 2 | Two Bedroom Townhome | 2.5 | 1,911-1,944 sq. ft. | \$3,850 - \$4,100 |
| 2 | Two Bedroom with Basement | 2 | 1,159-1,254 sq. ft. | \$3,100 |
| 2 | Two Bedroom with Loft | 2 | 1,639-1,751 sq. ft. | \$3,225 - \$3,300 |
| 3 | Three Bedroom with Basement | 2 | 1,425 sq. ft. | \$3,675 |
| 3 | Three Bedroom with Loft | 2 | 1,812 sq. ft. | \$3,775 |
| 3 | Three Bedroom Townhome | 2.5 | 2,220-2,300 sq. ft. | \$4,995 |

*All prices are subject to change.

Apartment Amenities

- Eat-In Kitchen
- LED Lighting
- Quartz Kitchen Countertops
- Voluminous 9' High Ceilings
- Generous Closet Space
- Living Room with Private Balcony/Patio
- Resident Controlled Central Air & Heat
- Internet Included
- Oversized 8' Glass Sliding Door
- USB Charging Ports

Community Amenities

- Accessible Jogging/Walking/Bike Trail
- Bowling Alley
- Cold Storage
- No Amenity Fees
- Tennis Court(s)
- Amazon Lockers
- Cable Ready
- Dog Run
- Playground
- Basketball Court(s)
- Clubhouse
- Guided Fitness Classes
- Swimming Pool

Appliances

- Dishwasher
- Range Hood
- Microwave
- Refrigerator/Freezer
- Oven/Range

Visit our Website - www.PondviewEstatesNJ.com

Rental Office Hours

| | | | | | | |
|---------------|----------------|------------------|-----------------|---------------|------------------|----------------|
| Monday 9-5 | Tuesday 9-5 | Wednesday 9-6 | Thursday 9-5 | Friday 9-5 | Saturday 10-5 | Sunday 10-5 |
|---------------|----------------|------------------|-----------------|---------------|------------------|----------------|

When you decide to rent with Garden Communities, the following items will be required when you submit your application:

- Non-refundable online application processing Fee. \$85 per applicant
- An online deposit of \$500 in order to reserve an apartment. This amount will be applied to your first month's rent upon approval and ONLY refunded if your application is declined.
- A valid photo ID and social security card.

We are an equal opportunity provider. We do not discriminate on the basis of race, color, sex, national origin, religion, handicap or familial status.

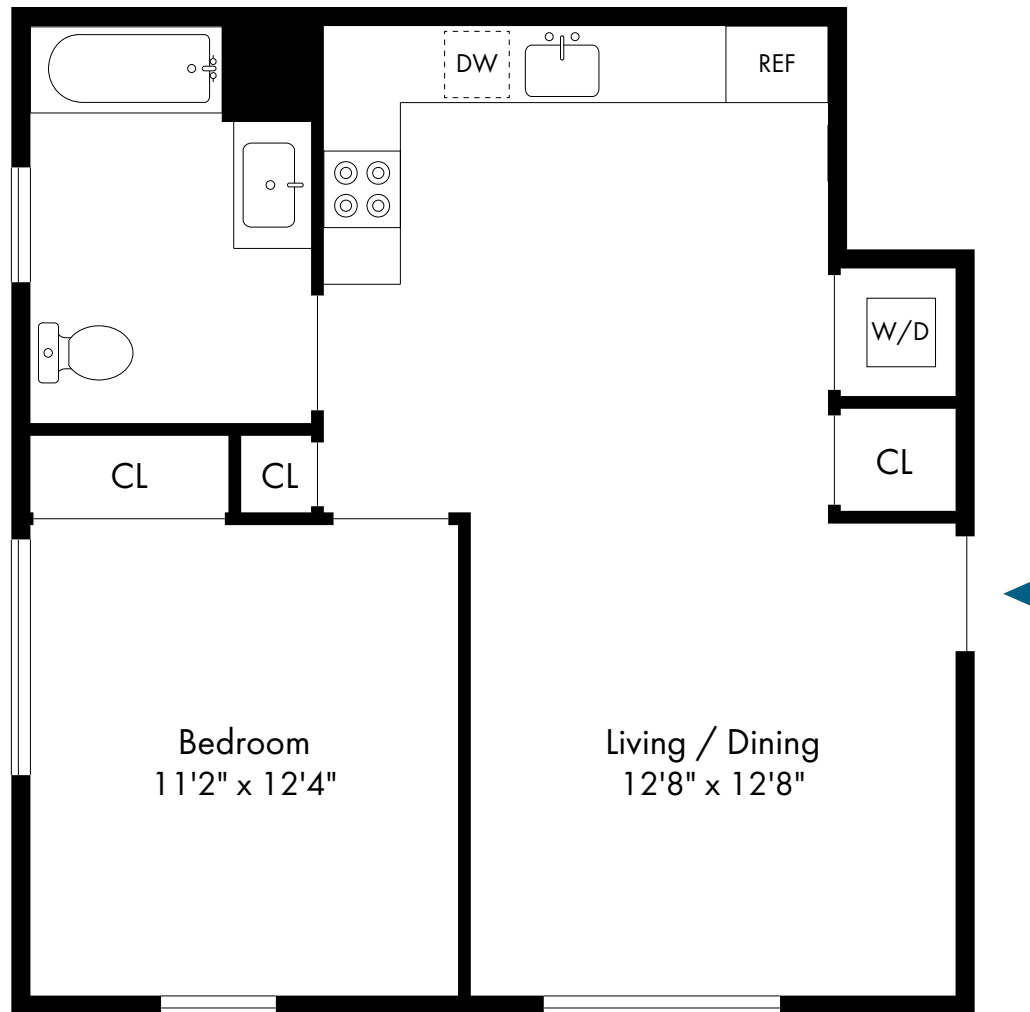


PONDVIEW
ESTATES

Rockaway Township, NJ

One Bedroom

1 Bed, 1 Bath | 662 - 730 SF



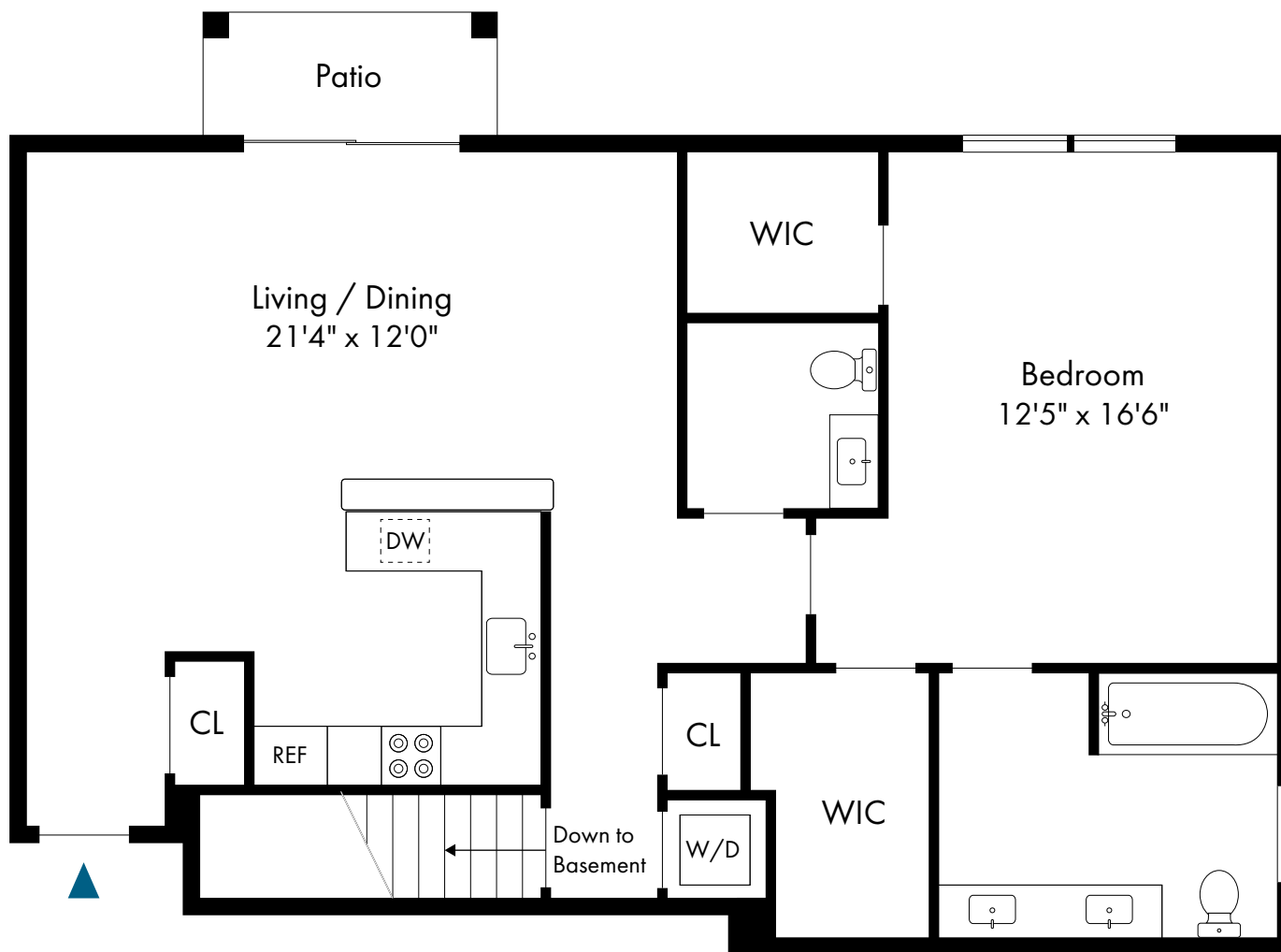


PONDVIEW
ESTATES

Rockaway Township, NJ

One Bedroom with Basement

1 Bed, 1.5 Bath | 898 - 1,057 SF



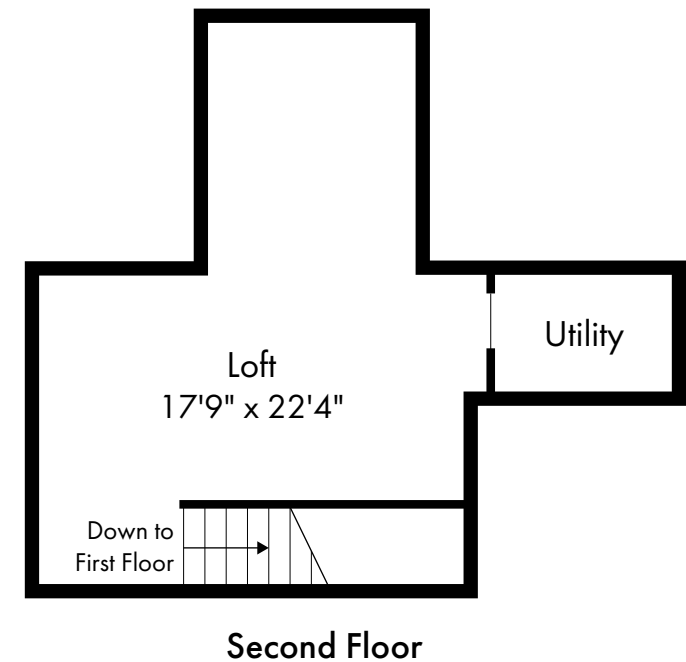
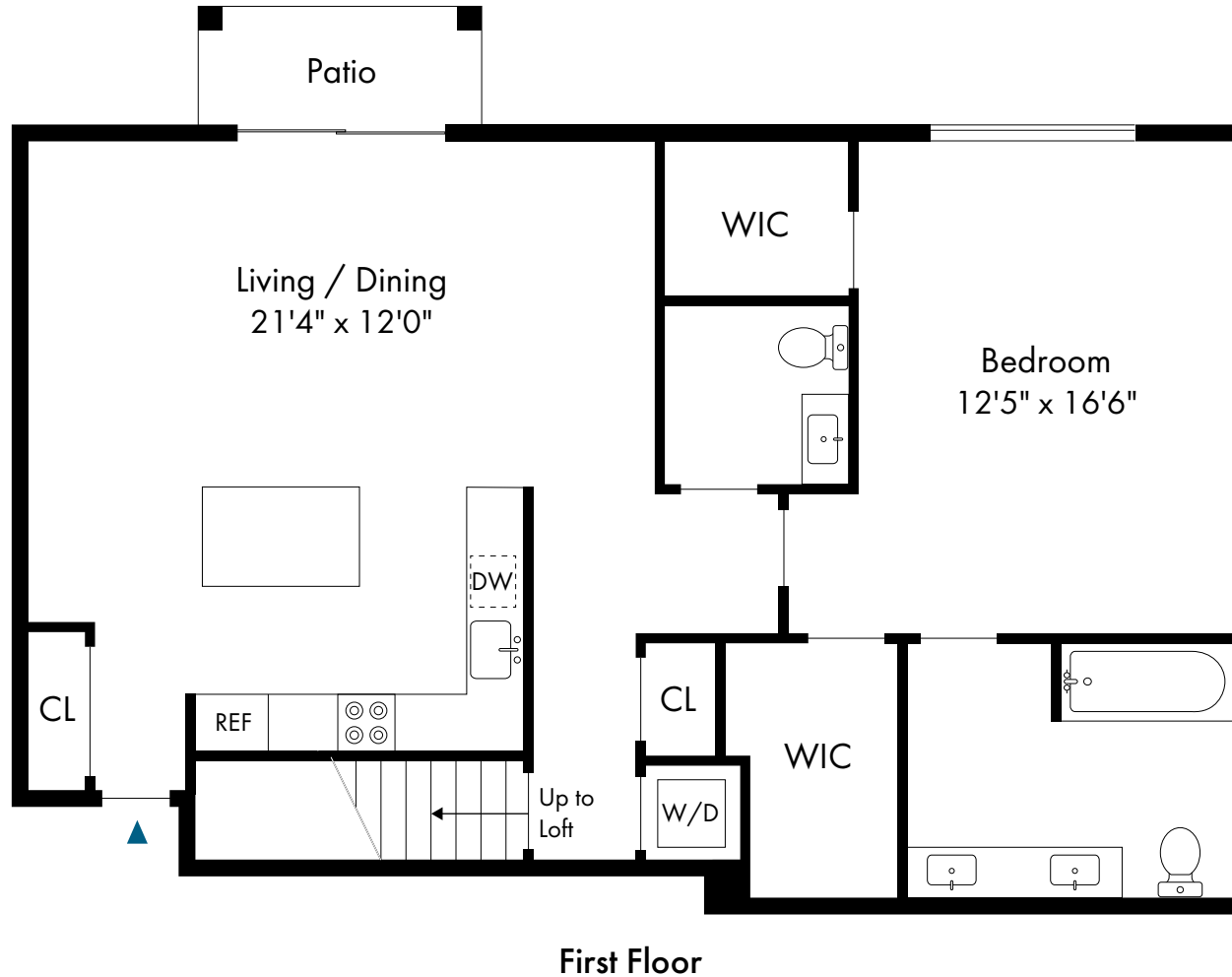


PONDVIEW
ESTATES

Rockaway Township, NJ

One Bedroom with Loft

1 Bed, 1.5 Bath | 1,348 - 1,495 SF



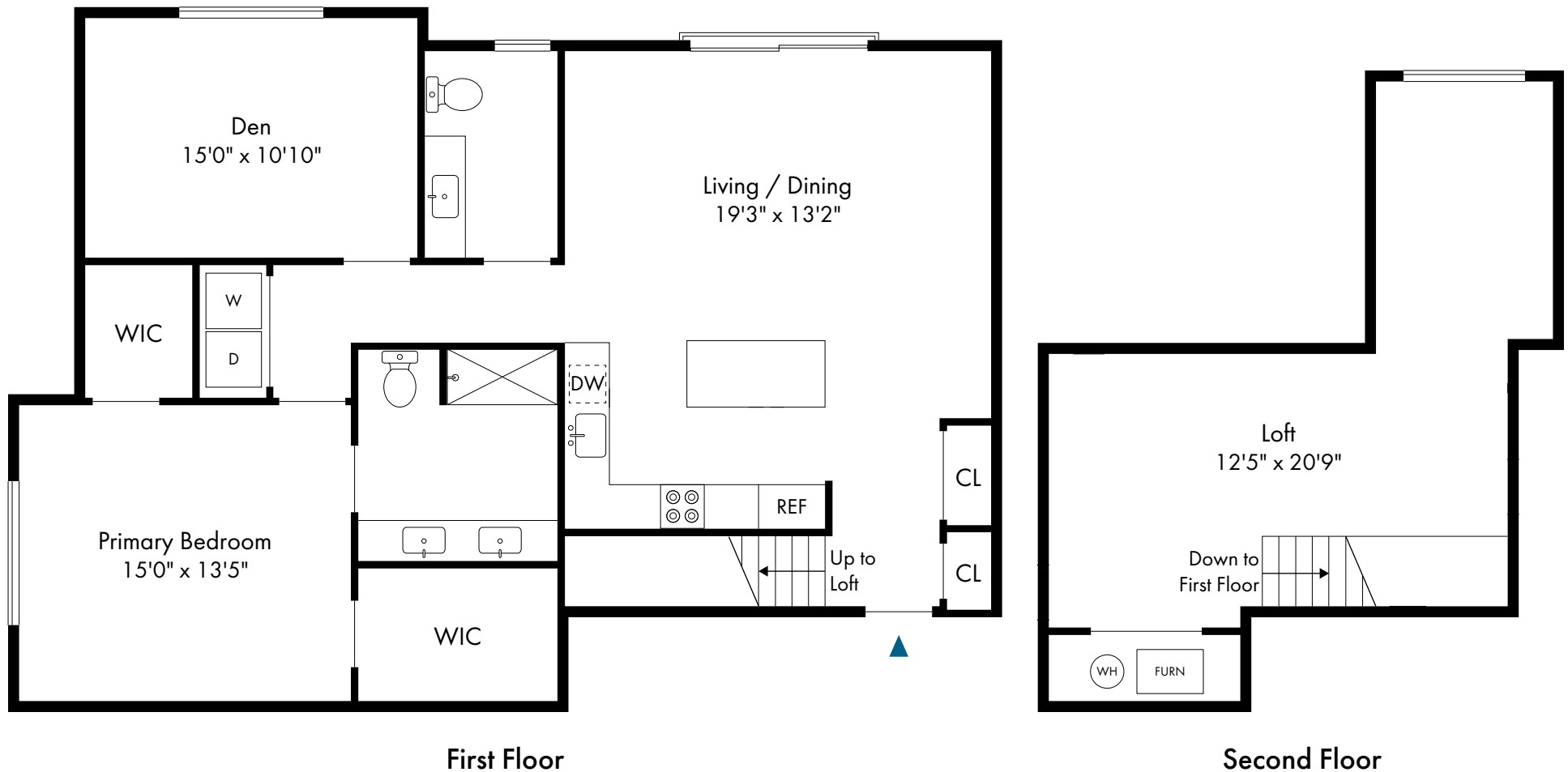


PONDVIEW
ESTATES

Rockaway Township, NJ

One Bedroom with Loft and Den

1 Bed, 1.5 Bath | 1,644 - 1,751 SF



First Floor

Second Floor

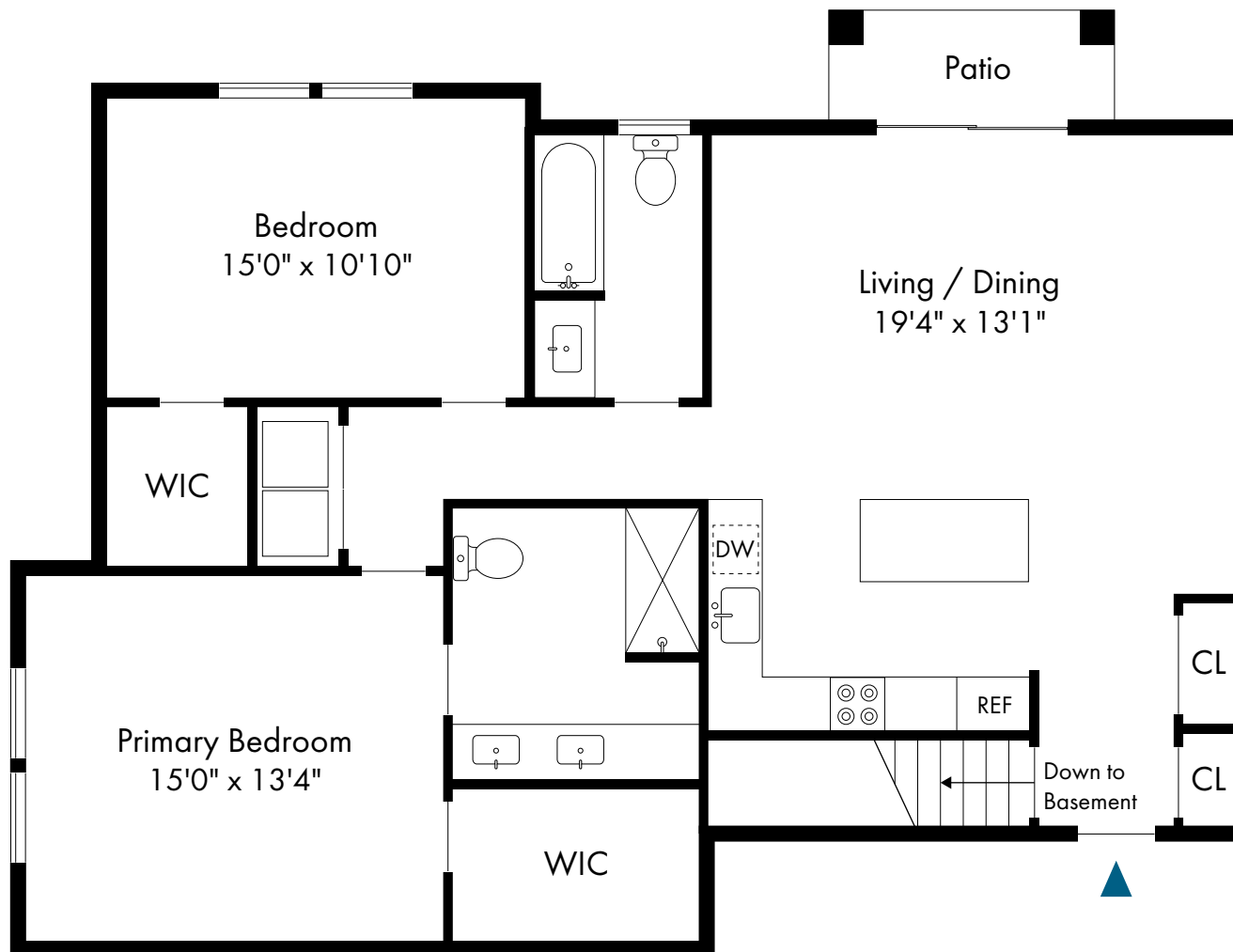


PONDVIEW
ESTATES

Rockaway Township, NJ

Two Bedroom with Basement

2 Bed, 2 Bath | 1,159 - 1,254 SF



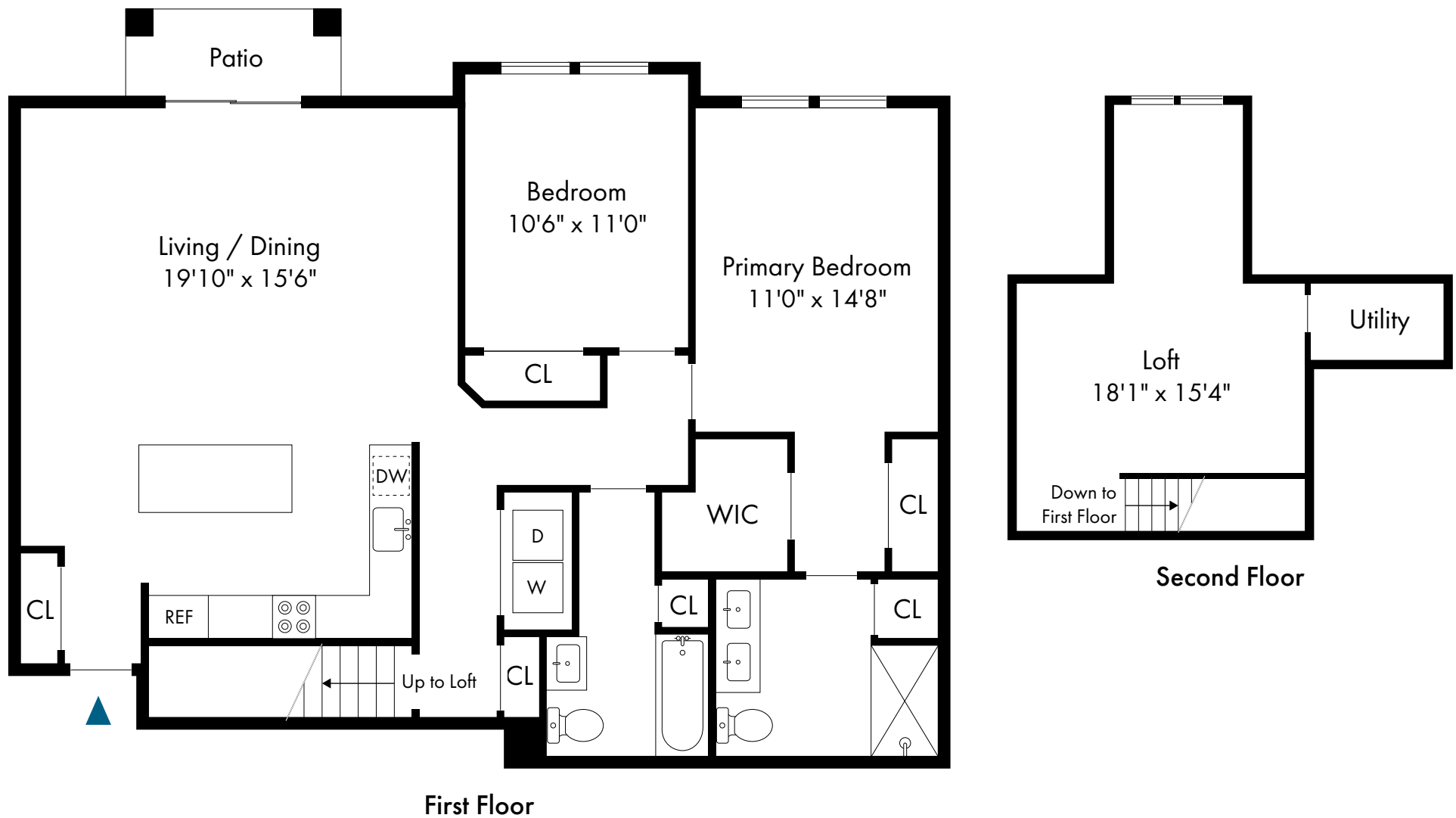


PONDVIEW
ESTATES

Rockaway Township, NJ

Two Bedroom with Loft

2 Bed, 2 Bath | 1,639 - 1,751 SF



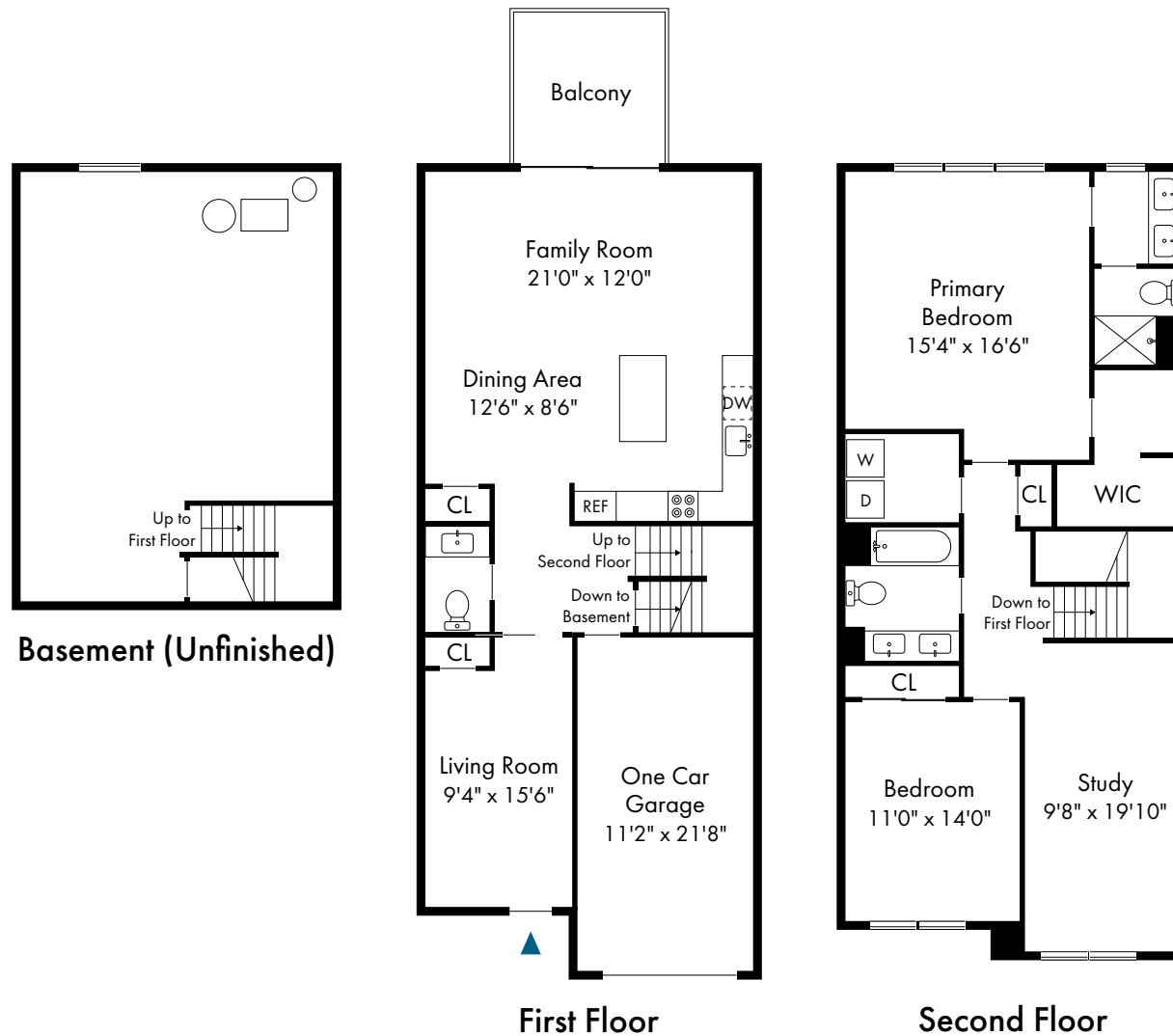


PONDVIEW
ESTATES

Rockaway Township, NJ

Two Bedroom Townhome

2 Bed, 2.5 Bath | 1,911 - 1,944 SF



973.664.7663

www.PondviewEstatesNJ.com

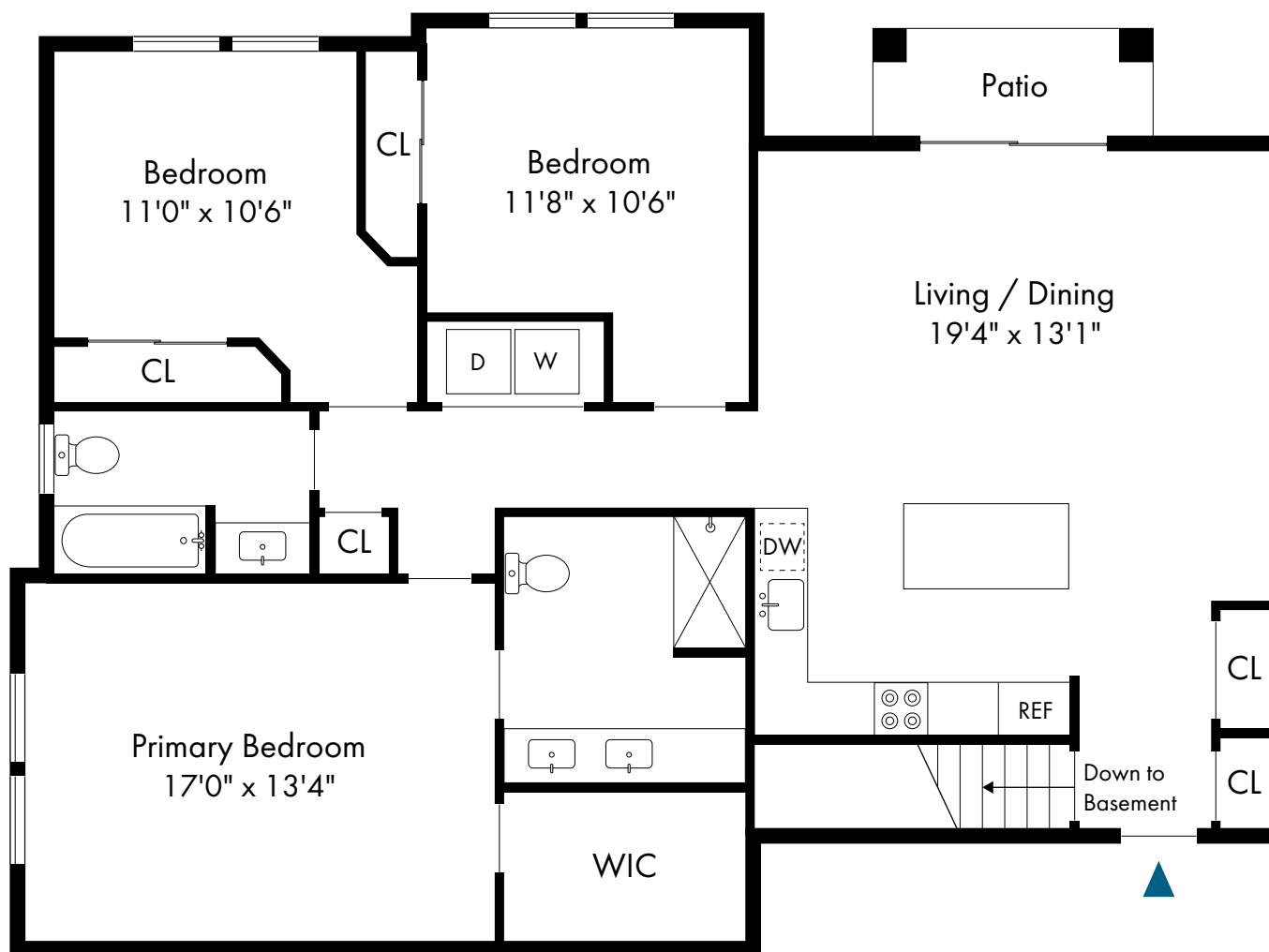


PONDVIEW
ESTATES

Rockaway Township, NJ

Three Bedroom with Basement

3 Bed, 2 Bath | 1,425 SF



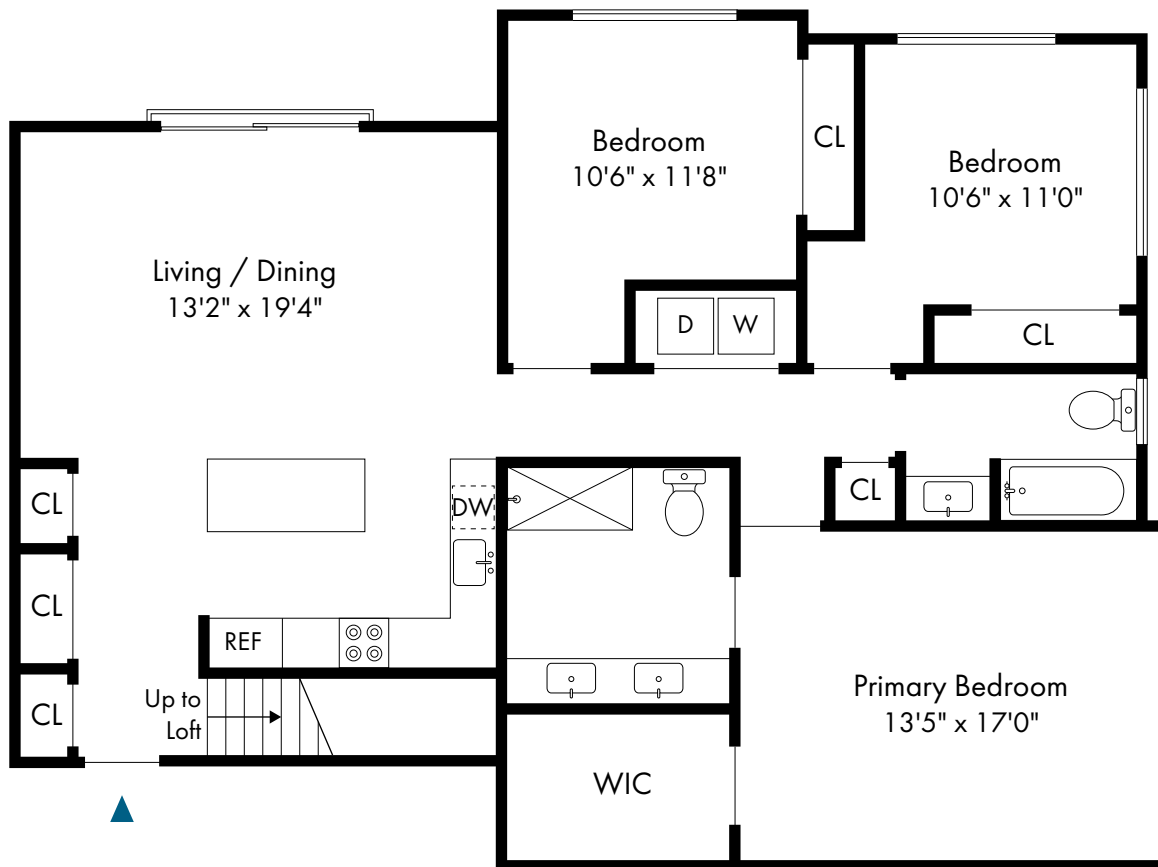


PONDVIEW
ESTATES

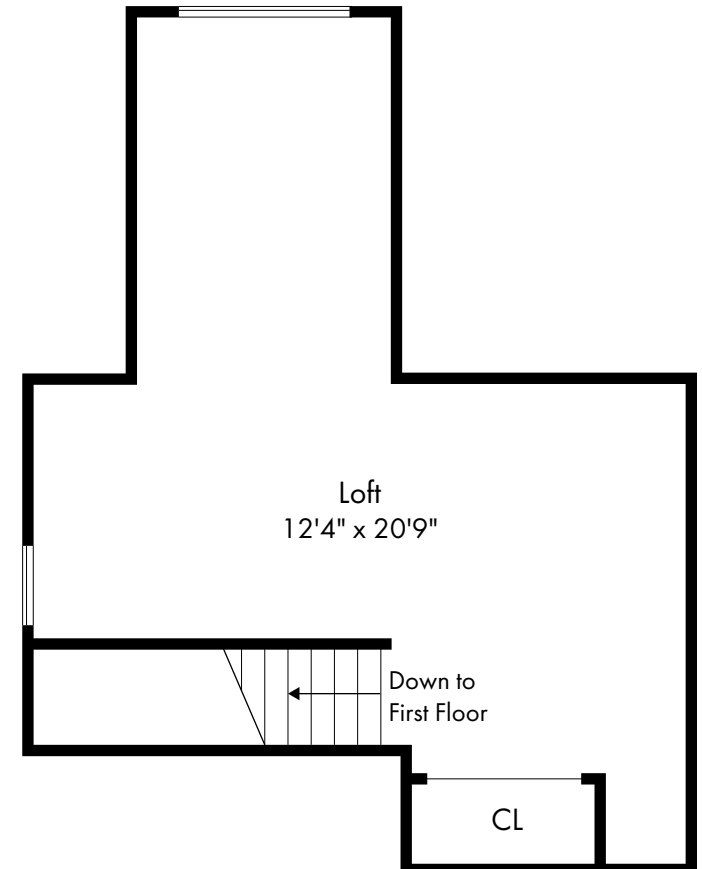
Rockaway Township, NJ

Three Bedroom with Loft

3 Bed, 2 Bath | 1,812 SF



First Floor



Second Floor

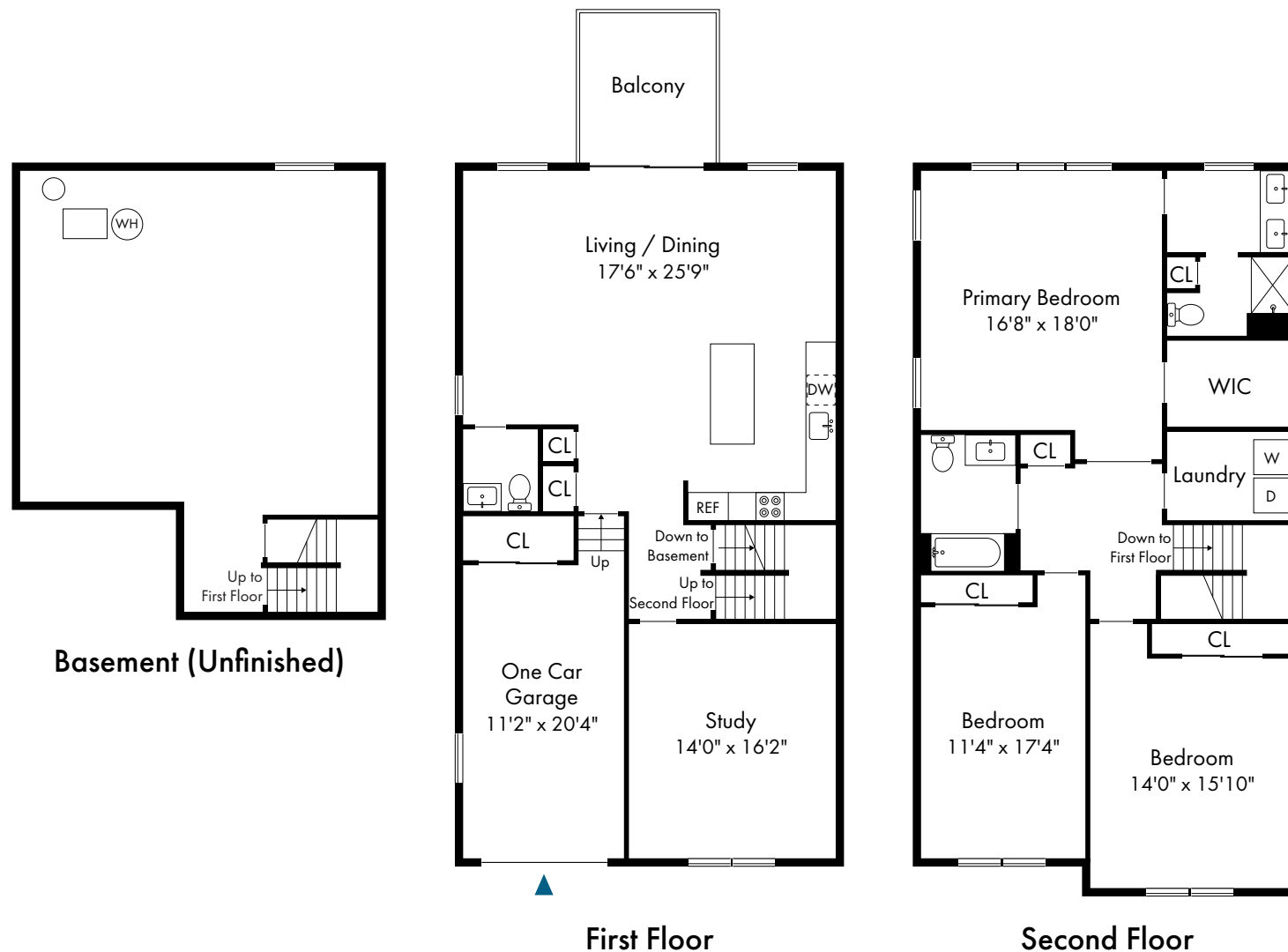


PONDVIEW
ESTATES

Rockaway Township, NJ

Three Bedroom Townhome

3 Bed, 2.5 Bath | 2,220 - 2,300 SF



973.664.7663

www.PondviewEstatesNJ.com