

POWDER MILL HEIGHTS

2110 Gates Court, Morris Plains NJ 07950 (973) 665-6406



Powder Mill Heights is nestled atop Parsippany's Watnong Mountain in Morris Plains, NJ. The 356 residence community boasts one and two story rental homes with one, two or three bedrooms that range in size from 1,100 to 2,660 square feet. Each apartment features plush wall-to-wall carpeting, color-coordinated ceramic tile baths, whirlpool tubs, Kohler fixtures, Moen faucets, laundry rooms equipped with washers and dryers and individually controlled heat and central air. Most residences also offer private balconies to maximize the panoramic views. Onsite recreational amenities include a clubhouse with indoor swimming pool, health club, meeting room and much more!

www.PowderMillHeightsNJ.com (973) 665-6406



WE ARE AN EQUAL HOUSING OPPORTUNITY PROVIDER. WE DO NOT DISCRIMINATE ON THE BASIS OF RACE, COLOR, SEX, NATIONAL ORIGIN, RELIGION, HANDICAP OR FAMILIAL STATUS.

WF-PowderMill110416



Powder Mill Heights

Bedrooms	Name	Baths	Area	Pricing
1	Model P1W/P1E	1	810 sq. ft.	\$2,525 - \$2,725
2	Model P2WB/P2EB	2	1,290 sq. ft.	\$3,025 - \$3,450
2	Model P2WSB/P2ESB	2	845 sq. ft.	\$2,975 - \$3,575
2	Model P2ED Duplex	2.5	2,100 sq. ft.	\$3,475
3	Model P3ED Duplex	2.5	2,170 sq. ft.	\$3,800 - \$4,000
3	Three Bedroom	2.5	1,160 sq. ft.	\$3,475 - \$3,800

*All prices are subject to change.

Apartment Amenities

- Eat-In Kitchen
- Private Patio or Balcony
- Jet Tub
- Townhomes with Garage Parking
- Plush Wall-To-Wall Carpet
- Underground Assigned Parking

Community Amenities

- 24-Hour Emergency Maintenance
- Daytime Concierge
- Natural Gas
- Security Guard
- Swimming Pool
- Assigned Parking
- Fitness Center
- Outdoor Plaza
- Security Lighting
- Verizon FIOS Available
- Cable Ready
- Meeting Room
- Sauna/Hot Tub
- Skyline Views

Appliances

- Dishwasher
- Refrigerator/Freezer
- Microwave
- Oven/Range

Visit our Website - www.PowderMillHeightsNJ.com

Rental Office Hours

Monday 9-5	Tuesday 9-5	Wednesday 9-5	Thursday 9-5	Friday 9-5	Saturday 11-5	Sunday Closed
---------------	----------------	------------------	-----------------	---------------	------------------	------------------

When you decide to rent with Garden Communities, the following items will be required when you submit your application:

- Non-refundable online application processing Fee. \$85 per applicant
- An online deposit of \$500 in order to reserve an apartment. This amount will be applied to your first month's rent upon approval and ONLY refunded if your application is declined.
- A valid photo ID, social security card and two current pay stubs.

We are an equal opportunity provider. We do not discriminate on the basis of race, color, sex, national origin, religion, handicap or familial status.

Powder Mill Heights

One Bedroom Floor Plan

with 1 Bath, 1120 sq. ft.

Model: P1W/P1E



Two Bedroom Floor Plan

with 2 Baths, 1625 sq. ft.

Model: P2W/P2E
with Balcony

Model: P2WB/P2EB
with Terrace



Two Bedroom Floor Plan

with 2 Baths, 2220 sq. ft.

Model: P2WSB/P2ESB



All dimensions, positions, locations and details are approximate.

All rent prices and community information subject to change.

Powder Mill Heights

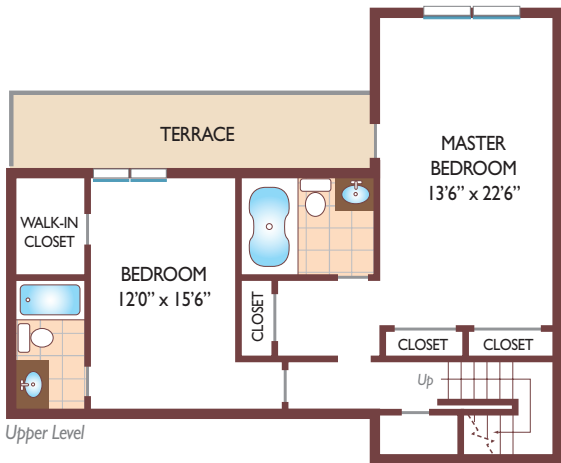
Two Bedroom Floor Plan

Duplex- with 2.5 Baths, 2100 sq. ft.

Model: P2ED



Lower Level

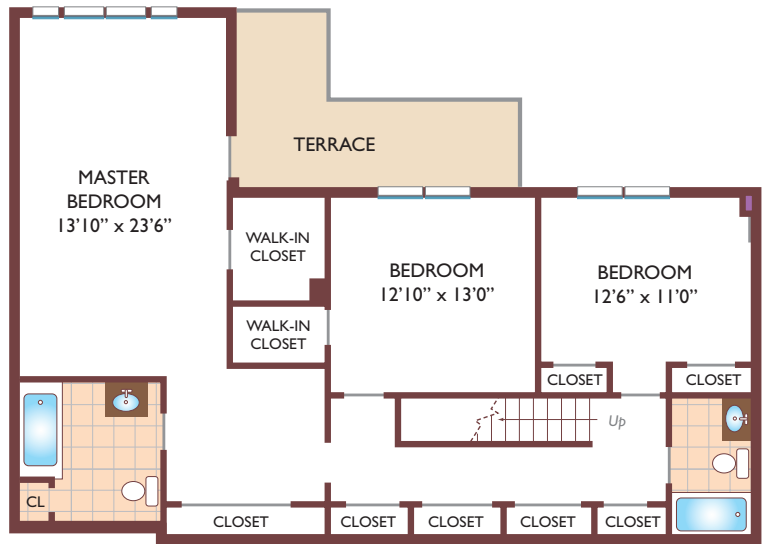


Upper Level

Three Bedroom Floor Plan

with 2.5 Baths, 2325 sq. ft.

Model: P3ED



Lower Level



Upper Level

All dimensions, positions, locations and details are approximate.

All rent prices and community information subject to change.

