

Providence Place

Bedrooms	Name	Baths	Area	Pricing
2	Townhome E	3	1,897 sq. ft.	\$4,800
3	Townhome A	2.5	2,412 sq. ft.	\$5,500
3	Townhome B	3	2,237 sq. ft.	\$6,000

*All prices are subject to change.

Apartment Amenities

- 1, 2, & 3 Bedroom Apartments
- Oversized Closets
- Townhomes with Garage Parking
- 2 & 3 Bedroom Townhomes
- Smoke-Free
- Washer/Dryer in Every Home
- Gourmet Center-Island Kitchens
- Spacious Floor Plans

Community Amenities

- 24-Hour Emergency Maintenance
- Easy Access To NYC Transportation
- Jogging Path/Walking Trail
- Residents Lounge
- Clubhouse
- Electric Vehicle Charging Stations
- No Amenity Fees
- Smoke-Free Community
- Covered Parking
- Fitness Center
- Pet-Friendly
- Swimming Pool

Appliances

- Dishwasher
- Refrigerator/Freezer
- Microwave
- Washer & Dryer in Apartment
- Oven/Range

Visit our Website - www.RentProvidencePlaceNJ.com

Rental Office Hours

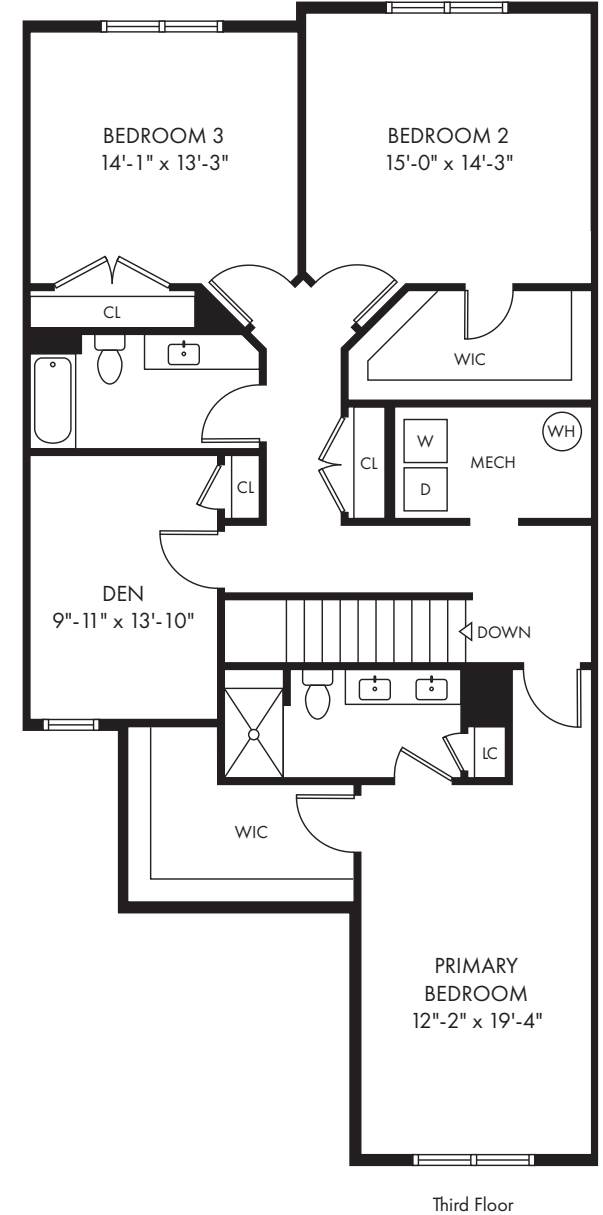
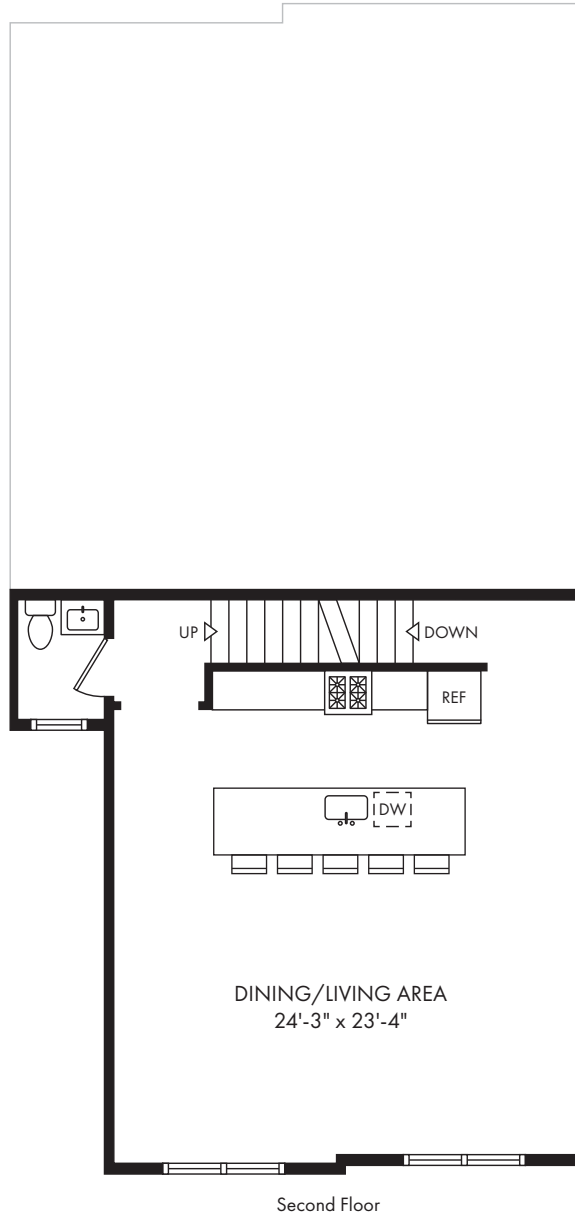
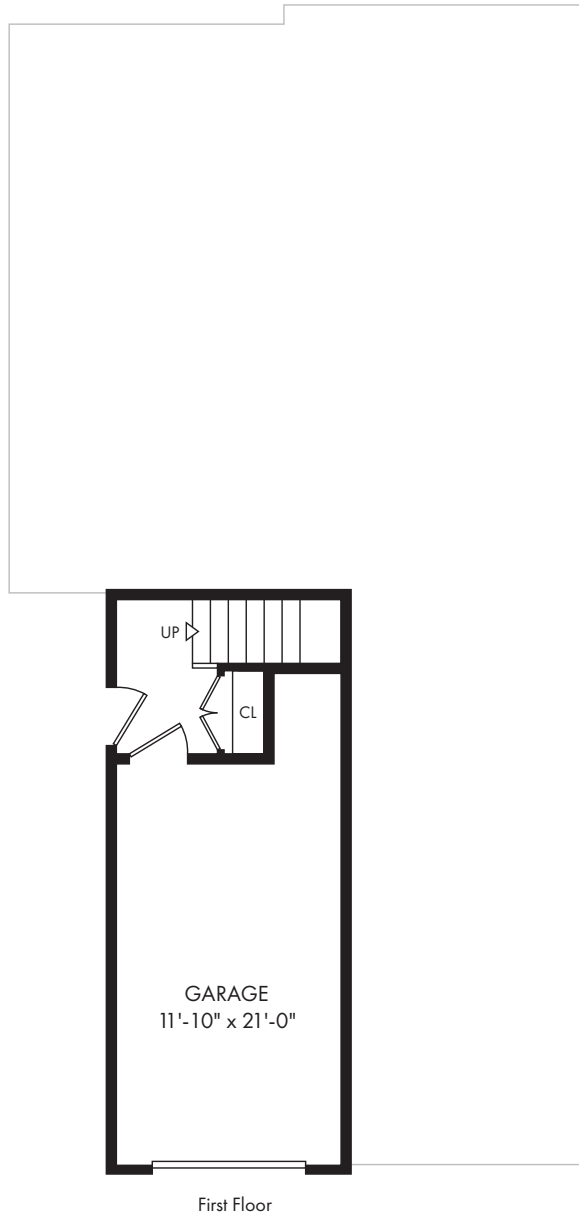
Monday TBD	Tuesday TBD	Wednesday TBD	Thursday TBD	Friday TBD	Saturday TBD	Sunday TBD
---------------	----------------	------------------	-----------------	---------------	-----------------	---------------

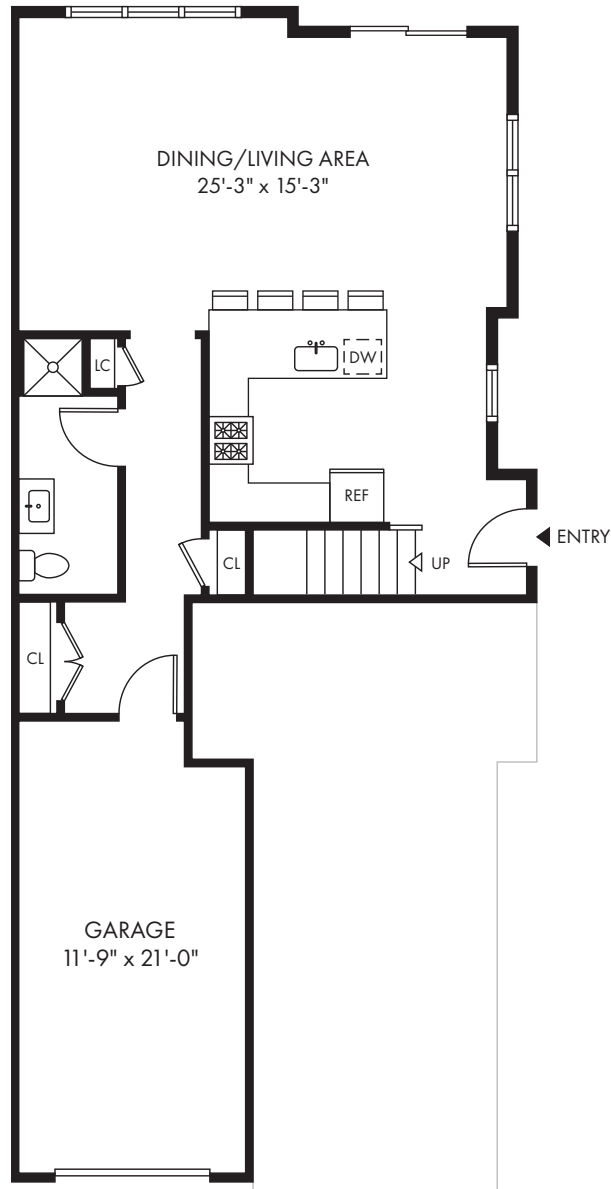
When you decide to rent with Garden Communities, the following items will be required when you submit your application:

- Non-refundable online application processing Fee. \$85 per applicant
- An online deposit of \$500 in order to reserve an apartment. This amount will be applied to your first month's rent upon approval and ONLY refunded if your application is declined.
- A valid photo ID and social security card

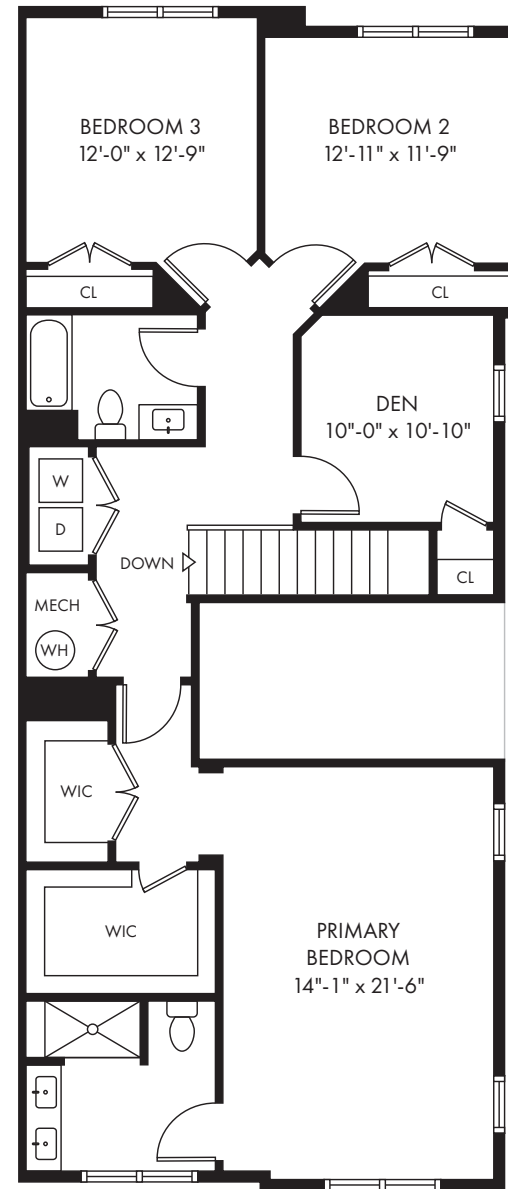
We are an equal opportunity provider. We do not discriminate on the basis of race, color, sex, national origin, religion, handicap or familial status.



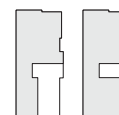


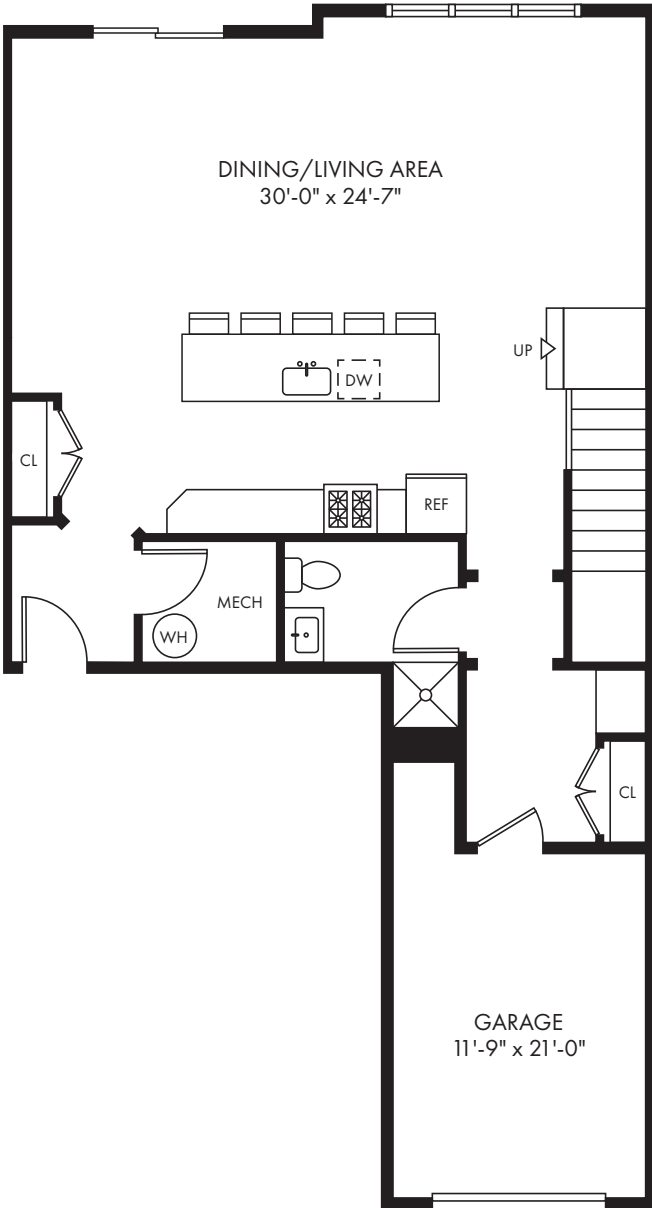


First Floor

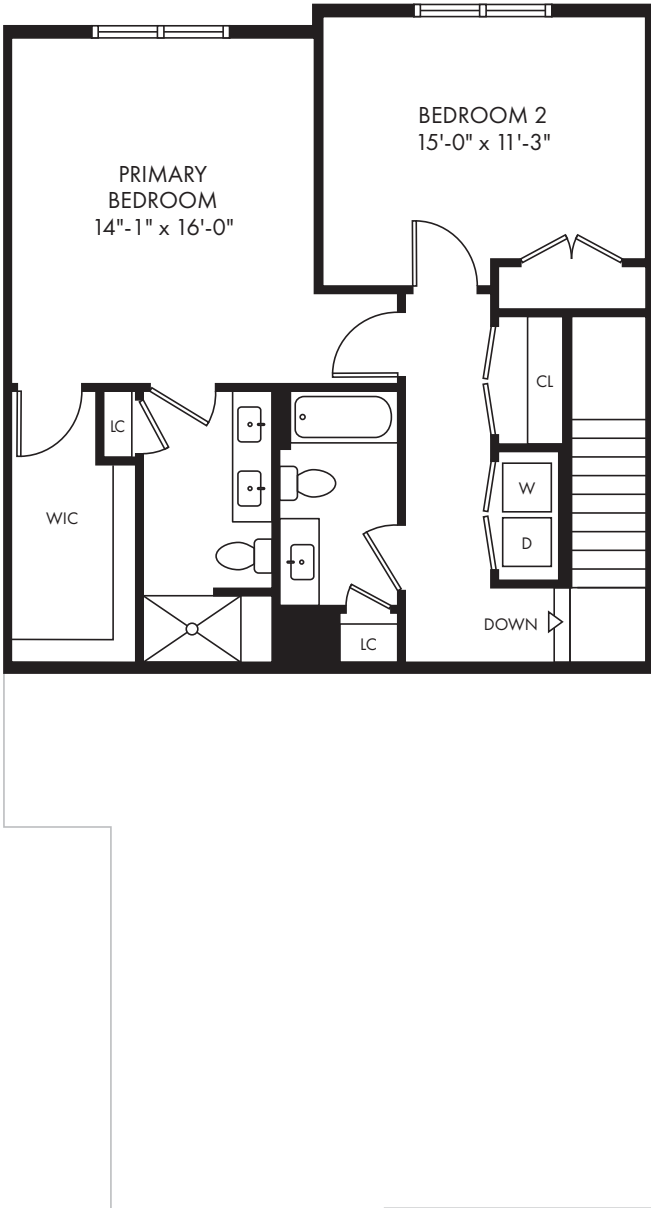


Second Floor





First Floor



Second Floor

