

# RIDGEVIEW COMMOMS

2467 Rt 10 East, Morris Plains, NJ 07950 (973) 457-4267



Ridgeview Commons sets the standard for upscale living. We are Morris County's most luxurious rental community. Our fabulous location provides all the charm and convenience of elegant suburban living. New Jersey's most prestigious shopping is only minutes away. Public transportation to New York City and major highways nearby make it a commuters dream. We are a great commute to New York City or anywhere in New Jersey.

[www.RidgeviewCommonsNJ.com](http://www.RidgeviewCommonsNJ.com) (973) 457-4267



WE ARE AN EQUAL HOUSING OPPORTUNITY PROVIDER. WE DO NOT DISCRIMINATE ON THE BASIS OF RACE, COLOR, SEX, NATIONAL ORIGIN, RELIGION, HANDICAP OR FAMILIAL STATUS.

WF-Ridgeview05042020



# Ridgeview Commons

Bedrooms	Name	Baths	Area	Pricing
2	Fern	2	1,200 sq. ft.	\$2,950
2	Birch	2.5	1,855 sq. ft.	\$3,375
2	Dogwood	2	1,200 sq. ft.	\$3,125
2	Garland	2	1,495 sq. ft.	\$3,125
2	Aspen	2.5	1,950 sq. ft.	\$3,375
2	Cedar	2	1,495-2,145 sq. ft.	\$3,425 - \$3,525
2	Elm	2	2,225 sq. ft.	\$3,575

\*All prices are subject to change.

## Apartment Amenities

- Garages Available
- Private Patio or Balcony
- Granite Kitchen Countertops (select models)
- Stainless Steel Appliances (Select Apartments)
- Plush Wall-To-Wall Carpet
- Washer/Dryer in Every Home

## Community Amenities

- 24-Hour Emergency Maintenance
- Garages Available
- Assigned Parking
- Security Lighting
- Cable Ready

## Appliances

- Dishwasher
- Refrigerator/Freezer
- Microwave
- Oven/Range

**Visit our Website - [www.RidgeviewCommonsNJ.com](http://www.RidgeviewCommonsNJ.com)**

## Rental Office Hours

Monday 8:30-4	Tuesday 8:30-4	Wednesday 8:30-4	Thursday 8:30-4	Friday 8:30-4	Saturday Closed	Sunday Closed
------------------	-------------------	---------------------	--------------------	------------------	--------------------	------------------

When you decide to rent with Garden Communities, the following items will be required when you submit your application:

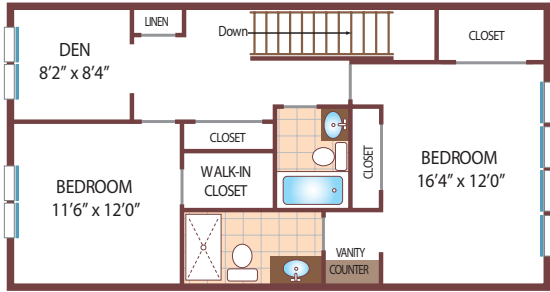
- Non-refundable online application processing Fee. \$85 per applicant
- An online deposit of \$500 in order to reserve an apartment. This amount will be applied to your first month's rent upon approval and ONLY refunded if your application is declined.
- A valid photo ID, social security card and two current pay stubs.

We are an equal opportunity provider. We do not discriminate on the basis of race, color, sex, national origin, religion, handicap or familial status.

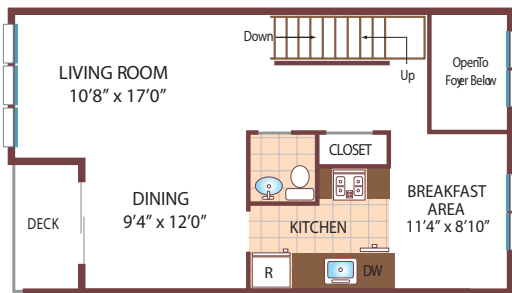
# Ridgeview Commons

## Two Bedroom Floor Plan

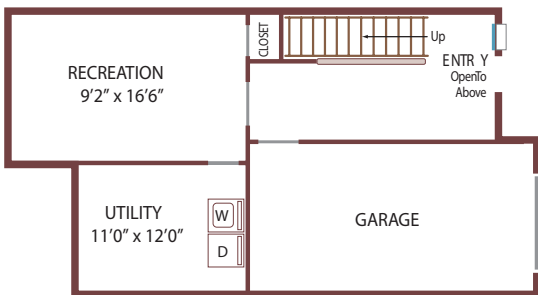
The Birch - Townhome  
w/ Den, RecRoom, Garage  
with 2 & 1/2 Baths, 1850 sq. ft.



Upper Level



Main Level



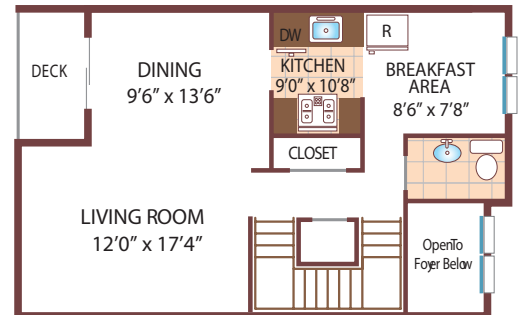
Ground Level

## Two Bedroom Floor Plan

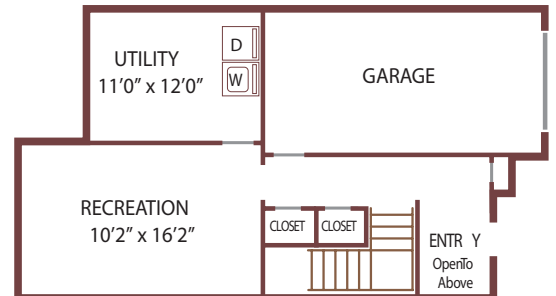
The Aspen - Townhome (End Unit)  
w/ Den, RecRoom, Garage  
with 2 & 1/2 Baths, 1930 sq. ft.



Upper Level



Main Level



Ground Level

All dimensions, positions, locations and details are approximate.

All rent prices and community information subject to change.



# Ridgeview Commons

## Two Bedroom Floor Plan

The Fern - Single Level / 1st Floor  
with Garage,  
with 2 Baths, 1200 sq. ft.



## Two Bedroom Floor Plan

The Garland/Dogwood - Single Level / 2nd Floor  
and 2 & 1/2 Baths, 1490 sq. ft.  
(Dogwood units have basement storage)



All dimensions, positions, locations and details are approximate.

All rent prices and community information subject to change.