

# RIVERFRONT AT CRANFORD STATION

## LEASING OFFICE

908.842.0805  
RiverfrontNJ.com

105 Chestnut Street  
Cranford, NJ 07016



# RIVERFRONT AT CRANFORD STATION

## SPACIOUS HOMES | CONVENIENT LOCATION

Discover Riverfront at Cranford Station, a luxury rental living destination nestled in Union County, NJ. Enjoy direct access to Cranford Station on the Raritan Valley Rail Line from our 1- and 2-bedroom residences, perfectly suited for commuters. Embrace proximity to major highways for seamless travel. Experience all-in-one living with dining and shopping options right outside your door. Community amenities include a fitness center, covered parking, community lounge, and a landscaped amenity deck. Inside each residence, modern features like generous closet space and an in-suite washer and dryer ensure comfort. Welcome home to Riverfront at Cranford Station – where convenience meets sophistication.

**Riverfront at Cranford Station offers a stunning selection of spacious one- and two-bedroom rental residences. Find the perfect floor plan to fit your lifestyle.**



All renderings, amenities, existing or future views and photos depicted or otherwise described herein are proposed and conceptual only, and are based upon preliminary development plans, which are subject to withdrawal, revisions, and other changes, without notice. Please inquire within for more details.

5.16.24

# Riverfront At Cranford Station

Bedrooms	Name	Baths	Area	Pricing
1	1A	1	950 sq. ft.	\$3,100
2	2A	2	1,380 sq. ft.	\$3,860 - \$4,080
2	2B	2	1,385 sq. ft.	\$4,080
2	2C	2	1,350 sq. ft.	\$4,080
2	2D	2	1,640 sq. ft.	\$4,550 - \$4,680

\*All prices are subject to change.

## Apartment Amenities

- 1- & 2-Bedroom Apartments
- Granite Kitchen Countertops
- Resident Controlled Central Air & Heat
- Eat-In Kitchen
- New Interiors
- Spacious Floor Plans
- Generous Closet Space
- Oversized Closets
- Stainless Steel Designer Appliances

## Community Amenities

- Celebration/Gathering Space
- Courtyard Terrace
- Elevator
- Landscaped Amenity Deck
- Walking Distance to NYC Transportation
- Clubhouse
- Covered Parking
- Fitness Center
- Public Transportation
- Walking distance to restaurants and shops
- Common Lounge
- Easy Access To NYC Transportation
- Jogging Path/Walking Trail
- Smoke-Free Community

## Appliances

- Dishwasher
- Range Hood
- Microwave
- Refrigerator/Freezer
- Oven/Range

Visit our Website - [www.RiverfrontNJ.com](http://www.RiverfrontNJ.com)

## Rental Office Hours

Monday Closed	Tuesday 9-5	Wednesday 9-5	Thursday By Appointment	Friday 9-5	Saturday 9-5	Sunday closed
------------------	----------------	------------------	----------------------------	---------------	-----------------	------------------

When you decide to rent with Garden Communities, the following items will be required when you submit your application:

- Non-refundable online application processing Fee. \$85 per applicant
- An online deposit of \$500 in order to reserve an apartment. This amount will be applied to your first month's rent upon approval and ONLY refunded if your application is declined.
- A valid photo ID and social security card

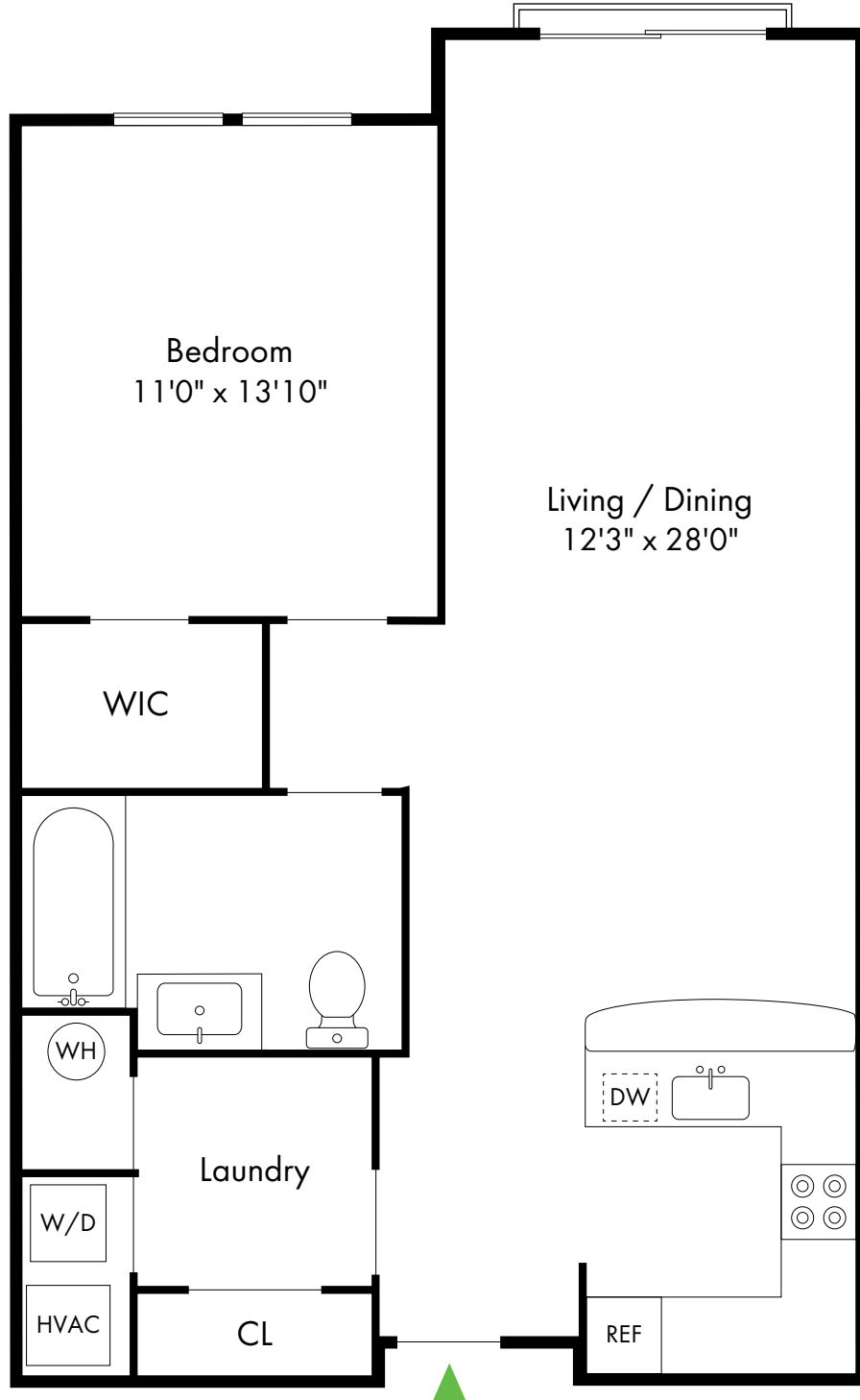
We are an equal opportunity provider. We do not discriminate on the basis of race, color, sex, national origin, religion, handicap or familial status.

# Riverfront at Cranford Station

1A

Cranford, NJ

1 Bed, 1 Bath | 950 SF



908.272.3111

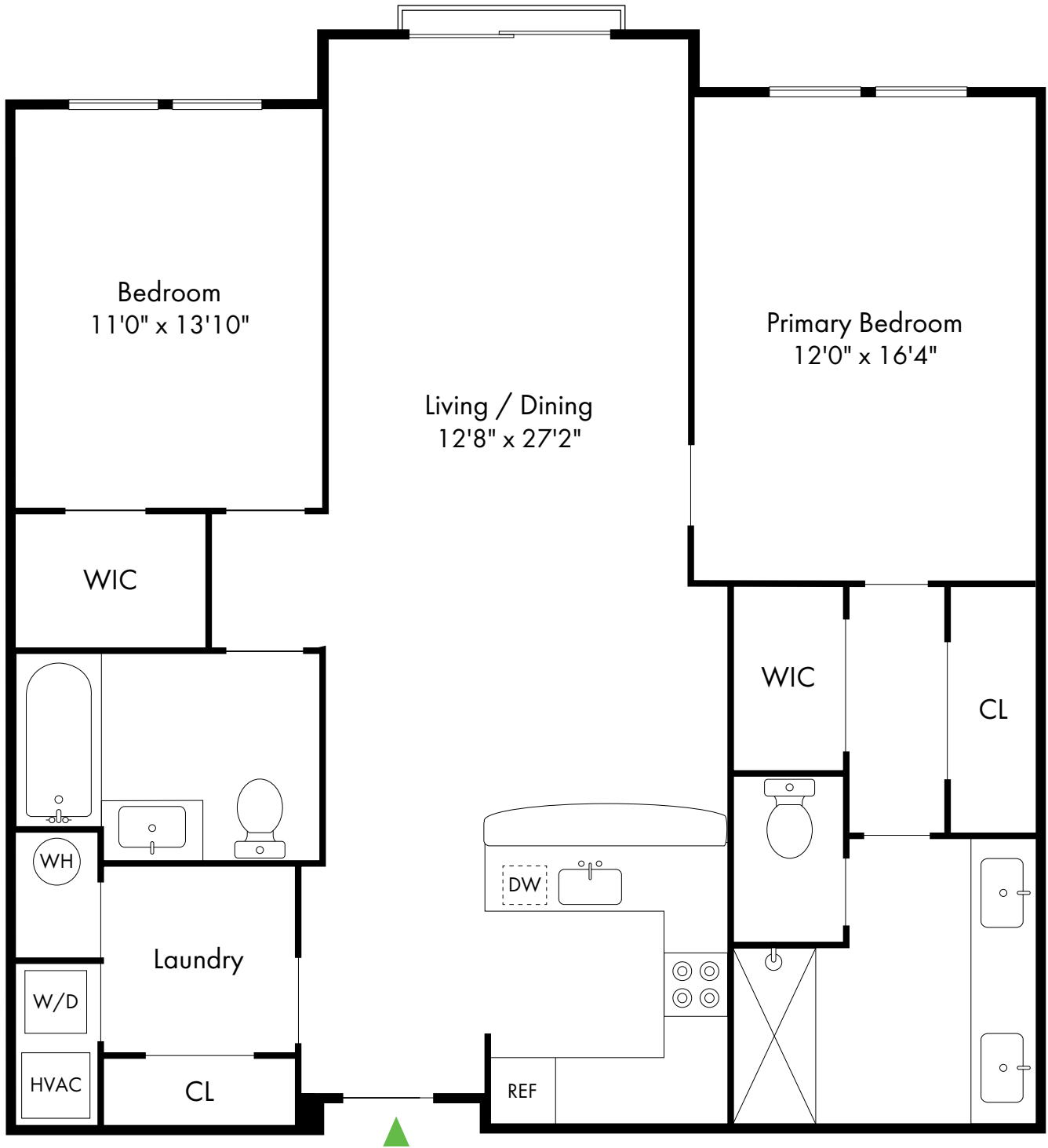
[www.RiverfrontNJ.com](http://www.RiverfrontNJ.com)

# Riverfront at Cranford Station

2A

Cranford, NJ

2 Bed, 2 Bath | 1,380 SF



908.272.3111

[www.RiverfrontNJ.com](http://www.RiverfrontNJ.com)

# Riverfront at Cranford Station

2B

Cranford, NJ

2 Bed, 2 Bath | 1,385 SF

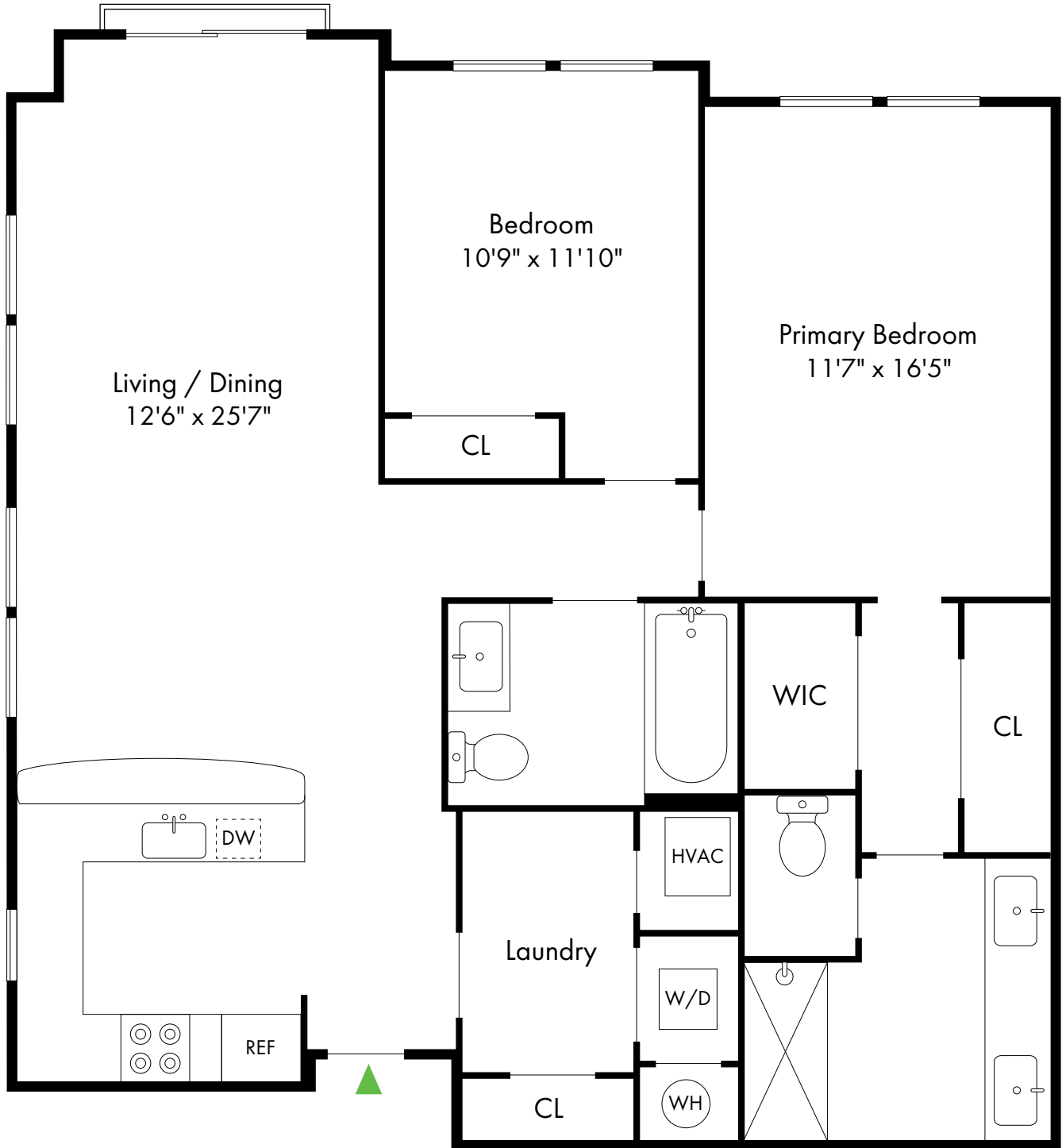


# Riverfront at Cranford Station

2C

Cranford, NJ

2 Bed, 2 Bath | 1,350 SF



# Riverfront at Cranford Station

2D

Cranford, NJ

2 Bed, 2 Bath | 1,640 SF

