

# RUTHERFORD HEIGHTS

## LEASING OFFICE

201.448.9003  
RutherfordHeightsNJ.com

666-1A Paterson Avenue  
East Rutherford, NJ 07073



# RUTHERFORD HEIGHTS

## SPACIOUS HOMES | CONVENIENT LOCATION

Located within the Bergen County suburb of East Rutherford, Rutherford Heights is a community with a collection of 256 spacious rental apartments. Residents can take advantage of the included utilities, such as heat, hot water, and cooking gas. Each 1- or 2-bedroom apartment is cable-ready, also boasting hardwood floors and resident-controlled air conditioning. Just 30 minutes from Manhattan, Rutherford Heights is a great choice for commuters. Residents also benefit from easy access to other major roadways, including Route 3, Route 17, Route 46, the Garden State Parkway and the New Jersey Turnpike.

**Rutherford Heights offers a stunning selection of spacious one- and two-bedroom rental residences. Find the perfect floor plan to fit your lifestyle.**



All renderings, amenities, existing or future views and photos depicted or otherwise described herein are proposed and conceptual only, and are based upon preliminary development plans, which are subject to withdrawal, revisions, and other changes, without notice. Please inquire within for more details.

2.12.24

# Rutherford Heights

| Bedrooms | Name        | Baths | Area        | Pricing           |
|----------|-------------|-------|-------------|-------------------|
| 1        | One Bedroom | 1     | 770 sq. ft. | \$2,040 - \$2,100 |
| 2        | Two Bedroom | 1     | 935 sq. ft. | \$2,685 - \$2,725 |

\*All prices are subject to change.

## Apartment Amenities

- Air Conditioning

## Community Amenities

- 24-Hour Emergency Maintenance
- Easy Access To NYC Transportation
- Natural Gas
- Verizon FIOS Available
- 30 Minutes to Midtown Manhattan
- Garages Available
- Public Transit Nearby
- Cable Ready
- Laundry Facilities
- Security Lighting

## Appliances

- Dishwasher
- Refrigerator/Freezer
- Oven/Range
- Range Hood

**Visit our Website - [www.RutherfordHeightsNJ.com](http://www.RutherfordHeightsNJ.com)**

## Rental Office Hours

|               |                |                  |                 |               |                      |                  |
|---------------|----------------|------------------|-----------------|---------------|----------------------|------------------|
| Monday<br>9-5 | Tuesday<br>9-5 | Wednesday<br>9-5 | Thursday<br>9-5 | Friday<br>9-5 | Saturday<br>by appt. | Sunday<br>Closed |
|---------------|----------------|------------------|-----------------|---------------|----------------------|------------------|

When you decide to rent with Garden Communities, the following items will be required when you submit your application:

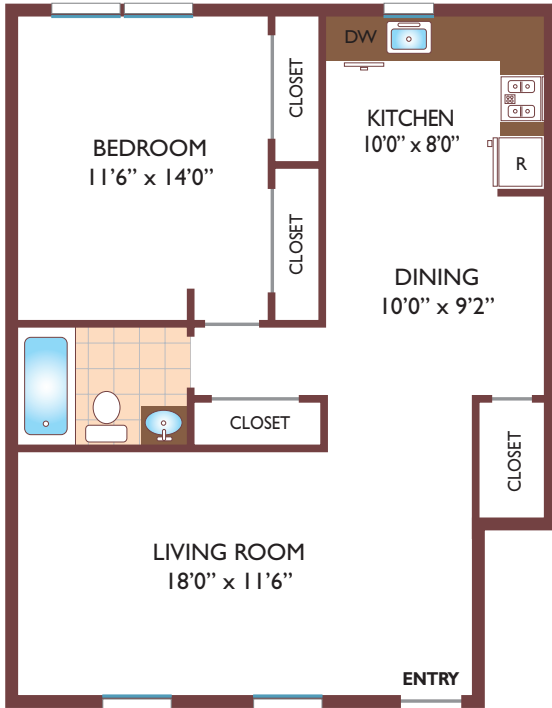
- Non-refundable online application processing Fee. \$85 per applicant
- An online deposit of \$500 in order to reserve an apartment. This amount will be applied to your first month's rent upon approval and ONLY refunded if your application is declined.
- A valid photo ID, social security card and two current pay stubs.

We are an equal opportunity provider. We do not discriminate on the basis of race, color, sex, national origin, religion, handicap or familial status.

# Rutherford Heights

## One Bedroom Floor Plan

with 1 Bath, 770 sq. ft.



## Two Bedroom Floor Plan

with 1 Bath, 935 sq. ft.



All dimensions, positions, locations and details are approximate.

All rent prices and community information subject to change.

