

SKYLINE RIDGE

LEASING OFFICE

973.821.7667
SkylineRidgeNJ.com

100 Wilson Road
Springfield, NJ 07081



SKYLINE RIDGE

SPACIOUS HOMES | UPSCALE AMENITIES | CONVENIENT LOCATION

Welcome to Skyline Ridge in Springfield, NJ, where luxury living meets breathtaking Manhattan skyline views. Our collection of 93 spacious rental residences spans from 1,440-2,220 square feet, catering to your every need. Each residence is meticulously designed with modern features, including an eat-in kitchen, jacuzzi tub, and a private patio or balcony perfect for soaking in the scenery. Indulge in community amenities including a state-of-the-art fitness center, expansive club room, reserved covered parking, and 24-hour concierge service. With easy access to I-78 and Route 22, Skyline Ridge offers unparalleled convenience and comfort, welcoming you to an elevated living experience.

**Skyline Ridge offers a stunning selection of spacious two-bedroom rental residences.
Find the perfect floor plan to fit your lifestyle.**



5.16.24

All renderings, amenities, existing or future views and photos depicted or otherwise described herein are proposed and conceptual only, and are based upon preliminary development plans, which are subject to withdrawal, revisions, and other changes, without notice. Please inquire within for more details.



Skyline Ridge

Bedrooms	Name	Baths	Area	Pricing
1	Plan E3	1.5	1,540 sq. ft.	\$4,550
2	Plan A	2.5	1,540 sq. ft.	\$4,650 - \$5,400
2	Plan F	2.5	1,440 sq. ft.	\$4,600 - \$4,900
2	Plan D	2.5	1,440 sq. ft.	\$4,650 - \$4,800
2	Plan B	2.5	1,800 sq. ft.	\$5,875 - \$6,300
2	Plan C	2.5	1,800 sq. ft.	\$6,300 - \$7,250
2	Plan E	2.5	1,890 sq. ft.	\$6,800

*All prices are subject to change.

Apartment Amenities

- Eat-In Kitchen
- Jet Tub
- Washer/Dryer in Every Home
- Extra Storage Space Available
- Kitchen Island
- Wet Bar
- Garages Available
- Private Patio or Balcony

Community Amenities

- 24-Hour Emergency Maintenance
- Fitness Center
- Reserved Covered Parking
- Cable Ready
- Jogging Path/Walking Trail
- Security Lighting
- Electric Vehicle Charging Stations
- Package Room
- Verizon FIOS Available

Appliances

- Cook Top
- Oven/Range
- Water Filter
- Dishwasher
- Range Hood
- Microwave
- Refrigerator/Freezer

Visit our Website - www.SkylineRidgeNJ.com

Rental Office Hours

Monday	Tuesday	Wednesday	Thursday	Friday	Saturday	Sunday
8:30 - 4:30	8:30 - 4:30	8:30 - 4:30	8:30 - 4:30	8:30 - 4:30	8:30 - 4:30	8:30 - 4:30

When you decide to rent with Garden Communities, the following items will be required when you submit your application:

- Non-refundable online application processing Fee. \$85 per applicant
- An online deposit of \$500 in order to reserve an apartment. This amount will be applied to your first month's rent upon approval and ONLY refunded if your application is declined.
- A valid photo ID, social security card and two current pay stubs.

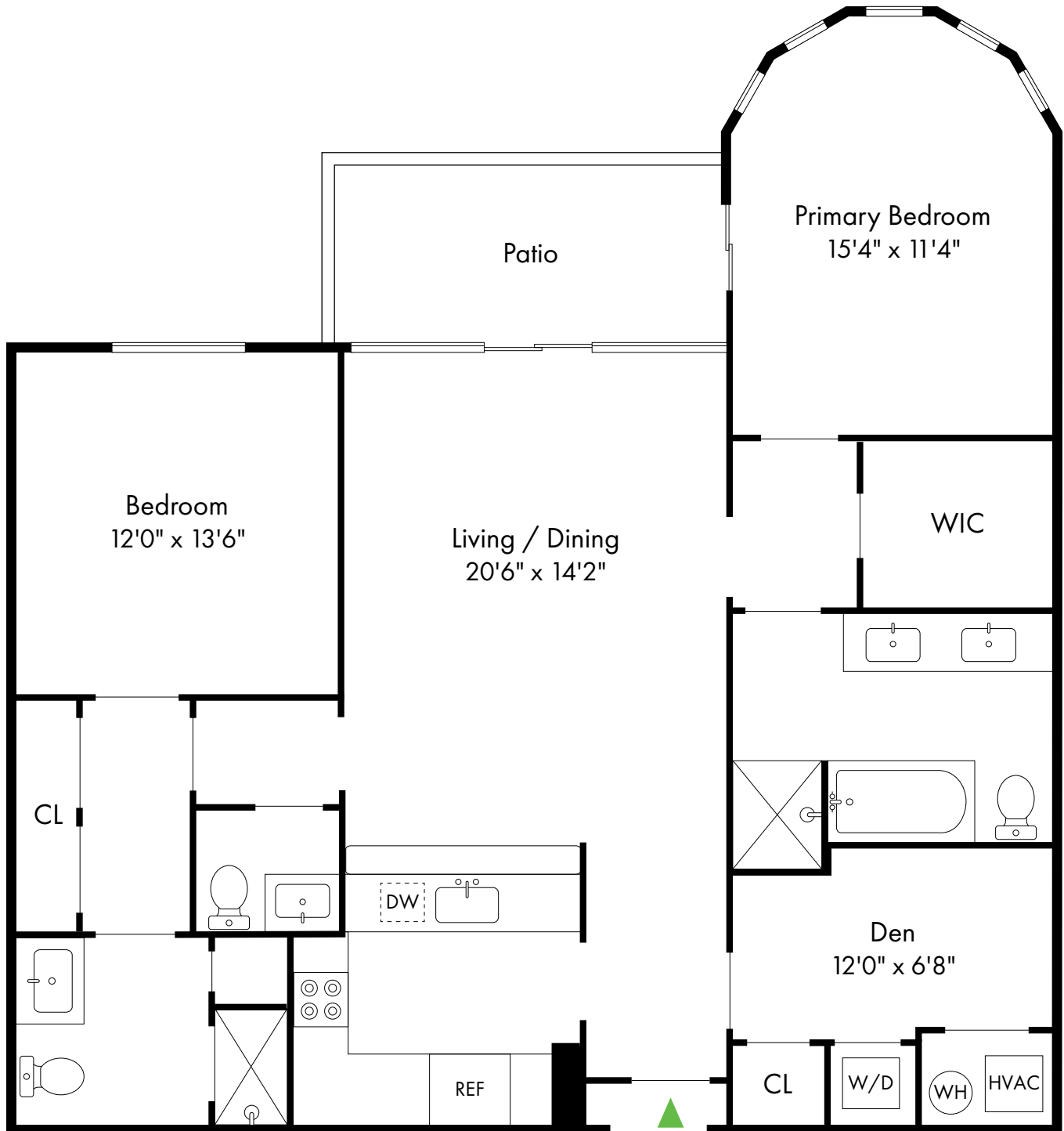
We are an equal opportunity provider. We do not discriminate on the basis of race, color, sex, national origin, religion, handicap or familial status.

Skyline Ridge

Springfield, NJ

Plan A

2 Bed, 2.5 Bath with Den | 1,540 SF

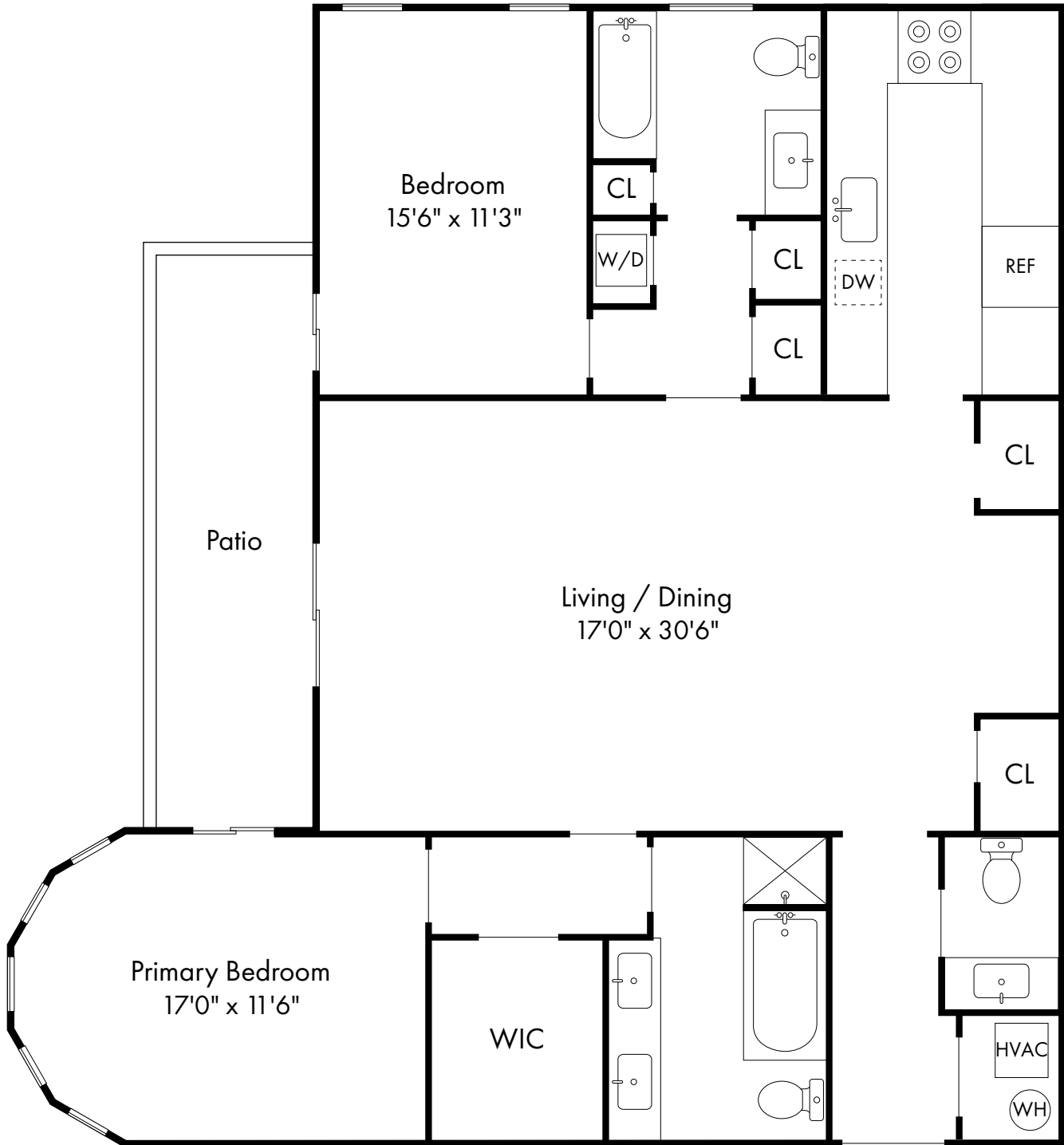


Skyline Ridge

Springfield, NJ

Plan B

2 Bed, 2.5 Bath | 1,800 SF

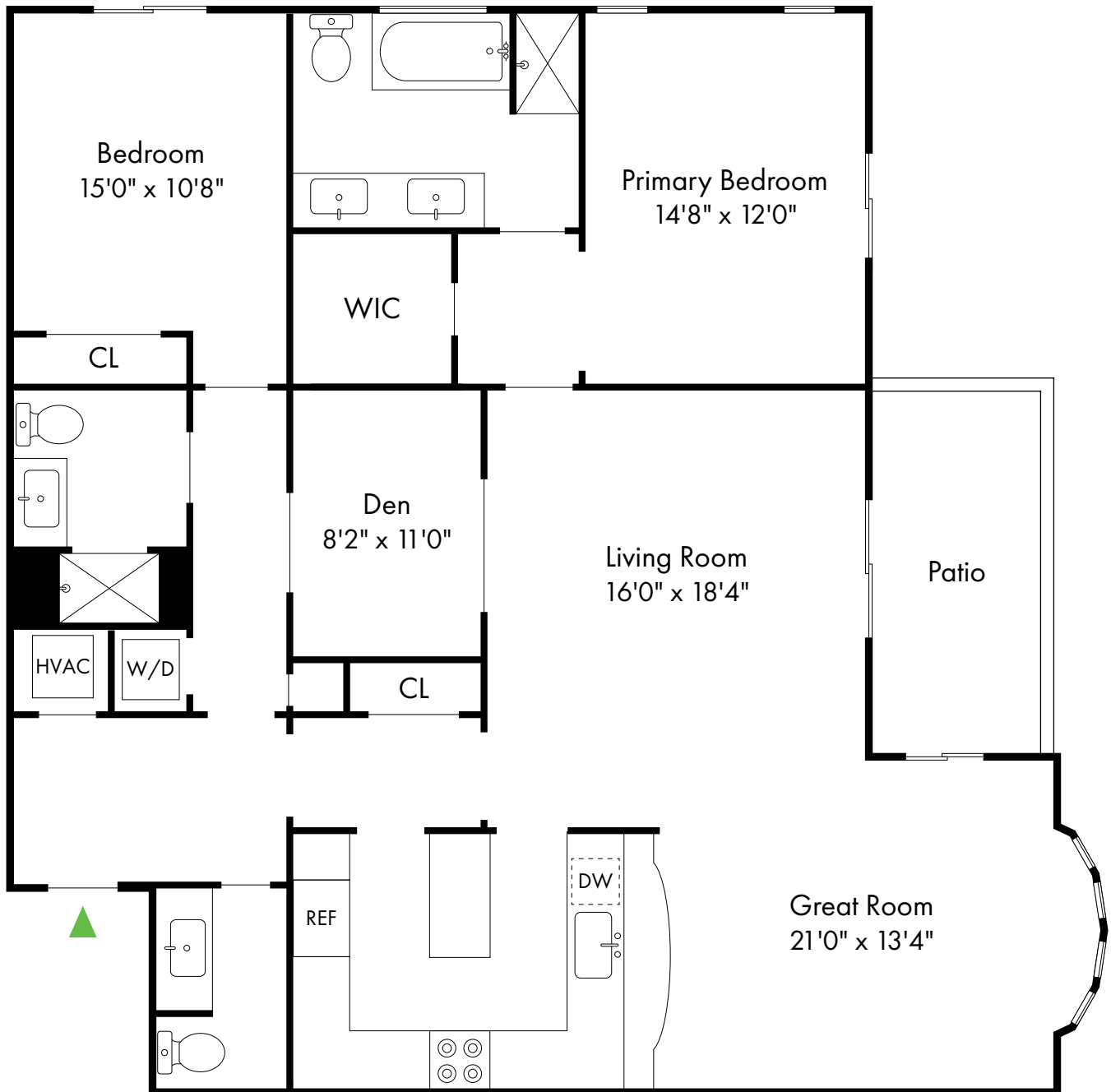


Skyline Ridge

Plan C

Springfield, NJ

2 Bed, 2.5 Bath with Den | 1,800 - 1,925 SF



973.564.6333

www.SkylineRidgeNJ.com