

SPRING MILL MANOR - 55+

LEASING OFFICE

973.947.8764
SpringMillManorNJ.com

32 Blacks Lane
Springfield, NJ 07081



SPRING MILL MANOR - 55+

SPACIOUS HOMES | CONVENIENT LOCATION

Welcome to Spring Mill Manor, a 55+ rental community in Springfield, NJ. Our spacious one- and two-bedroom apartments range in size from 784 to 1,489 square feet, accommodating all your lifestyle needs. Each residence features carpeted bedrooms, ceramic tile kitchens and bathrooms, hardwood flooring, quartz kitchen countertops, and GE stainless steel appliances. Our homes also boast an intercom system, resident-controlled air and heat, and in-suite washers/dryers. Community amenities include 24-hour emergency maintenance, controlled access with video security, a fitness center, clubhouse, covered parking, and a pet-friendly policy. Enjoy easy access to NYC transportation and major routes nearby.

Spring Mill Manor offers a stunning selection of spacious one- and two-bedroom rental residences. Find the perfect floor plan to fit your lifestyle.



All renderings, amenities, existing or future views and photos depicted or otherwise described herein are proposed and conceptual only, and are based upon preliminary development plans, which are subject to withdrawal, revisions, and other changes, without notice. Please inquire within for more details.

9.19.24

Spring Mill Manor

| Bedrooms | Name | Baths | Area | Pricing |
|----------|------|-------|---------------------|---------|
| 1 | E | 1 | 784-980 sq. ft. | \$2,535 |
| 2 | C | 2 | 1,064-1,222 sq. ft. | \$2,785 |
| 2 | A | 1 | 1,148 sq. ft. | \$2,755 |
| 2 | F | 2 | 1,489 sq. ft. | \$2,985 |

*All prices are subject to change.

Apartment Amenities

- Carpeted Bedrooms
- GE Stainless Steel Appliances
- Newly Renovated Interiors (select apartments)
- Walk-In Closet in Select Apartments
- Ceramic Tile Kitchen and Bathrooms
- Hardwood Flooring
- Quartz Kitchen Countertops
- Washer/Dryer in Every Home
- Extra Storage Space Available
- Individual Intercom System
- Resident Controlled Central Air & Heat

Community Amenities

- 24-Hour Emergency Maintenance
- Controlled Access at Building Entry
- Natural Gas
- Cable Ready
- Covered Parking
- Security Lighting
- Clubhouse
- Fitness Center
- Verizon FIOS Available

Appliances

- Dishwasher
- Refrigerator/Freezer
- Microwave
- Oven/Range

Visit our Website - www.SpringMillManorNJ.com

Rental Office Hours

| | | | | | | |
|---------------|----------------|------------------|-----------------|---------------|----------------------|--------------------|
| Monday 9-5 | Tuesday 9-5 | Wednesday 9-5 | Thursday 9-5 | Friday 9-5 | Saturday By Appt. | Sunday By Appt. |
|---------------|----------------|------------------|-----------------|---------------|----------------------|--------------------|

When you decide to rent with Garden Communities, the following items will be required when you submit your application:

- Non-refundable online application processing Fee. \$85 per applicant
- An online deposit of \$500 in order to reserve an apartment. This amount will be applied to your first month's rent upon approval and ONLY refunded if your application is declined.
- A valid photo ID, social security card and two current pay stubs.

We are an equal opportunity provider. We do not discriminate on the basis of race, color, sex, national origin, religion, handicap or familial status.

Spring Mill Manor

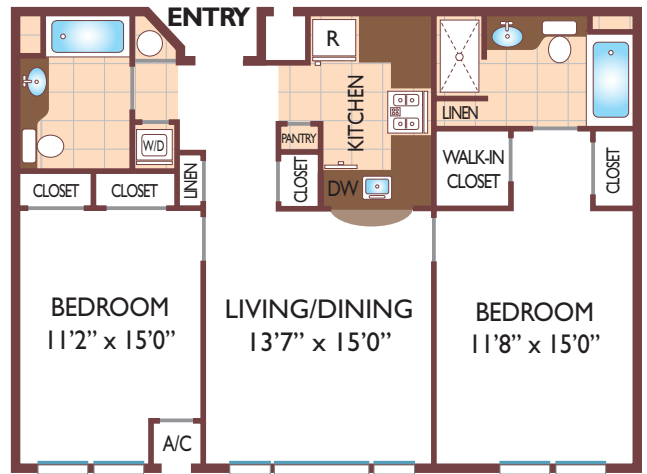
One Bedroom Floor Plan

Unit Style - E
with 1 Bath, 980 sq. ft.



Two Bedroom Floor Plan

Unit Style - C
with 2 Baths, 1065 sq. ft.



Two Bedroom Floor Plan

Unit Style - A
with 2 Baths, 1150 sq. ft.



All dimensions, positions, locations and details are approximate.
All rent prices and community information subject to change.