



Talmadge Village

5 Shetland Court • Edison, NJ 08817 • 732.549.7999

The Middlesex County Township of Edison is home to Talmadge Village, a collection of 330 apartments.

Layouts include one bedroom apartments, and three bedroom duplexes, that range in size up to 1020 square feet of living space. Each residence includes a washer and dryer, dishwasher, refrigerator, oven, carpeting, central air conditioning, walk-in closet, deck, garages (in most homes), and extra storage.

Residents enjoy having access to an onsite swimming pool and 24-hour emergency maintenance. Close public transportation options makes this an ideal location for commuters.



DIRECTIONS

Take 287 to exit 2A for NJ-27N towards Metuchen. Turn left onto Bridge St. Turn left onto New Durham Road for 1 mile. Turn right onto Reading Rd and continue straight. The Leasing Office is on your right.

SERVICED BY

Durham Woods Leasing Office
32-N Reading Road
Edison, NJ 08817
732.549.7999

Talmadge Village

Bedrooms	Name	Baths	Area	Pricing
1	The Douglas	1	480 sq. ft.	\$1,825 - \$2,085
3	The Elm	2	915 sq. ft.	\$3,015 - \$3,210

*All prices are subject to change.

Apartment Amenities

- Plush Wall-To-Wall Carpet
- Private Patio or Balcony
- Resident Controlled Central Air & Heat

Community Amenities

- 24-Hour Emergency Maintenance
- Cable Ready
- Easy Access To NYC Transportation
- Natural Gas
- Playground
- Public Transit Nearby
- Swimming Pool

Appliances

- Dishwasher
- Oven/Range
- Range Hood
- Refrigerator/Freezer

Visit our Website - www.TalmadgeVillageNJ.com

Rental Office Hours

Monday 9-5	Tuesday 9-7	Wednesday 9-5	Thursday 9-7	Friday 9-5	Saturday 11-5	Sunday 11-5
---------------	----------------	------------------	-----------------	---------------	------------------	----------------

When you decide to rent with Garden Communities, the following items will be required when you submit your application:

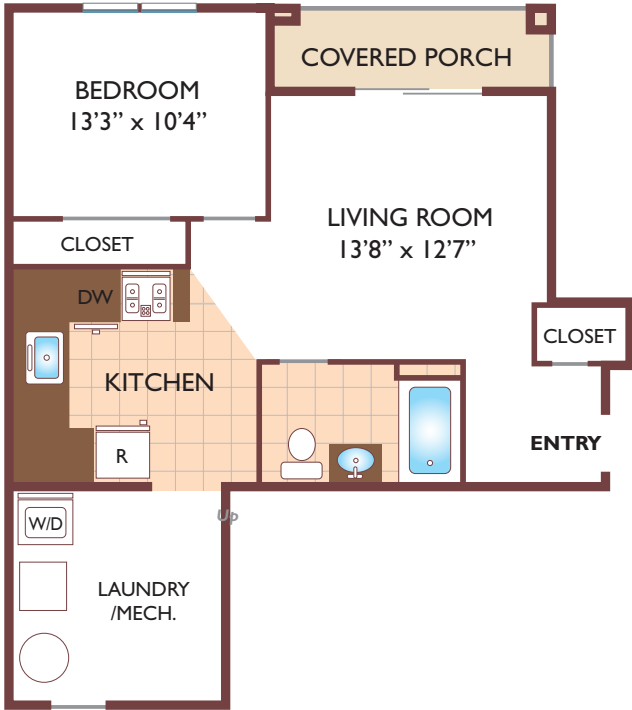
- Non-refundable online application processing Fee. \$75 per applicant
- An online deposit of \$500 in order to reserve an apartment. This amount will be applied to your first month's rent upon approval and ONLY refunded if your application is declined.
- A valid photo ID, social security card and two current pay stubs.

We are an equal opportunity provider. We do not discriminate on the basis of race, color, sex, national origin, religion, handicap or familial status.

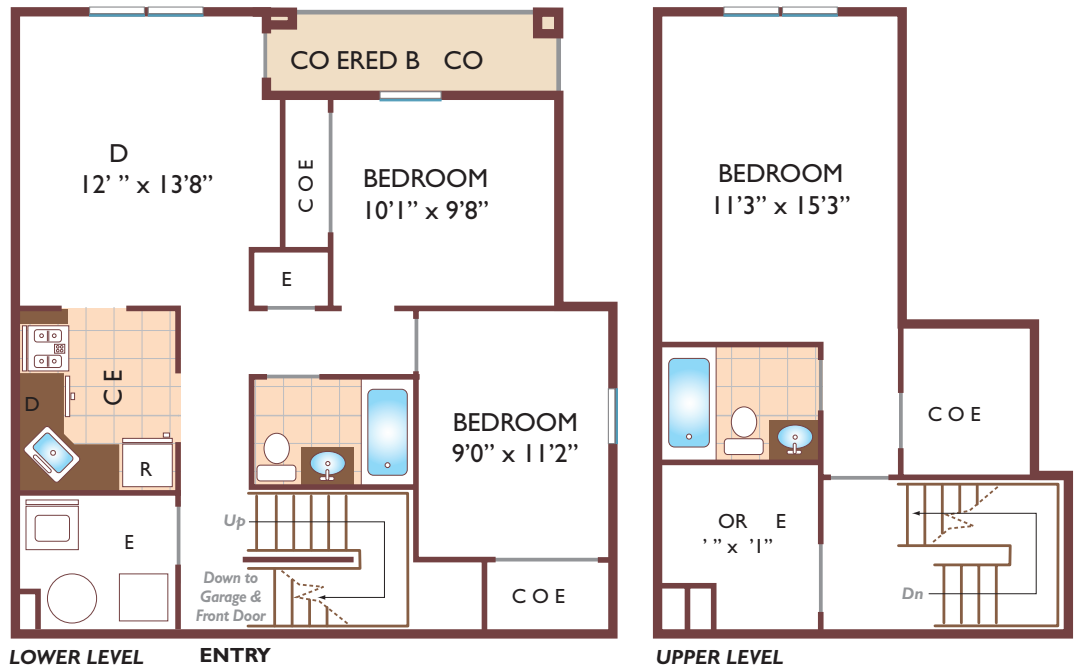


Talmadge Village

One Bedroom Floor Plan with 1 Bath, 659 sq. ft. / The Douglas



Three Bedroom Duplex Floor Plan with 2 Baths, 1319 sq. ft. / The Elm



All dimensions, positions, locations and details are approximate.
All rent prices and community information subject to change.

