

TERRACE VIEW GARDENS

LEASING OFFICE

908.378.8449
TerraceViewNJ.com

300-301 Maple Avenue
North Plainfield, NJ 07060



TERRACE VIEW GARDENS

SPACIOUS HOMES | CONVENIENT LOCATION

Welcome to Terrace View Gardens, a garden-style apartment community in the Somerset County town of North Plainfield, NJ. With 216 spacious one- and two-bedroom rentals ranging in size from 790 to 1,015 square feet, these homes are perfect for setting up a home office or creating a play area for little ones. Each apartment features hardwood floors, a refrigerator and oven/range, air conditioning, and a patio or balcony in select residences. Our pet-friendly community offers convenient amenities, including garages, on-site laundry, a playground, and 24-hour emergency maintenance. Experience comfort and convenience at Terrace View Gardens—schedule your tour today and make it your new home!

Terrace View Gardens offers a stunning selection of spacious one- and two-bedroom rental residences. Find the perfect floor plan to fit your lifestyle.



1.20.25

All renderings, amenities, existing or future views and photos depicted or otherwise described herein are proposed and conceptual only, and are based upon preliminary development plans, which are subject to withdrawal, revisions, and other changes, without notice. Please inquire within for more details.



Terrace View Gardens

Bedrooms	Name	Baths	Area	Pricing
1	One Bedroom	1	790-800 sq. ft.	\$1,885
1	One Bedroom w/ Large Kitchen	1	800 sq. ft.	\$1,895
2	Two Bedroom - Lower Level	1	1,015 sq. ft.	\$2,470

*All prices are subject to change.

Apartment Amenities

- Air Conditioning
- Private Patio or Balcony

Community Amenities

- 24-Hour Emergency Maintenance
- Cable Ready
- Laundry Facility
- Natural Gas
- Pet-Friendly
- Playground
- Security Lighting

Appliances

- Oven/Range
- Range Hood
- Refrigerator/Freezer

Visit our Website - www.TerraceViewNJ.com

Rental Office Hours

Monday 9-5	Tuesday 9-5	Wednesday 9-5	Thursday 9-5	Friday 9-5	Saturday 10-5	Sunday 9 - 3
---------------	----------------	------------------	-----------------	---------------	------------------	-----------------

When you decide to rent with Garden Communities, the following items will be required when you submit your application:

- Non-refundable online application processing Fee. \$75 per applicant
- An online deposit of \$200 in order to reserve an apartment. This amount will be applied to your first month's rent upon approval and ONLY refunded if your application is declined.
- A valid photo ID, social security card and two current pay stubs.

We are an equal opportunity provider. We do not discriminate on the basis of race, color, sex, national origin, religion, handicap or familial status.

Terrace View Garden

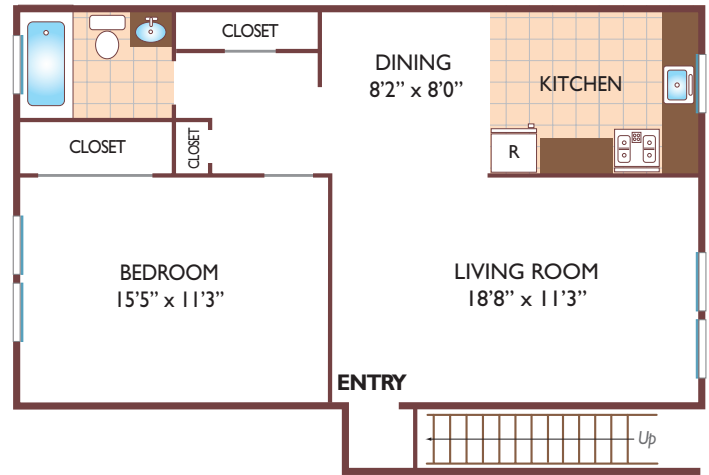
One Bedroom Floor Plan

Ground Level
with 1 Bath, 790 sq. ft.



One Bedroom Floor Plan

Upper Level
with 1 Bath, 800 sq. ft.



Two Bedroom Floor Plan

Lower Level
with 1 Bath, 1015 sq. ft.



All dimensions, positions, locations and details are approximate.

All rent prices and community information subject to change.