

# THE COMMONS

## LEASING OFFICE

201.995.6900

[TheCommonsAtUSRNJ.com](http://TheCommonsAtUSRNJ.com)

2 Silver Beech Court  
Upper Saddle River, NJ 07458



# THE COMMONS AT UPPER SADDLE RIVER

## SPACIOUS HOMES | CONVENIENT LOCATION

Nestled in Bergen County, The Commons at Upper Saddle River offers 154 two-bedroom rental apartments. Each spacious layouts includes an in-suite washer and dryer, plush wall-to-wall carpet, ample closet space and a private patio or balcony. Select residences even boast a finished basement! Enjoy proximity to excellent schools and convenient access to routes 17, 208, 287 and the Garden State Parkway, making living here a commuter's dream.

The Commons at Upper Saddle River offers a stunning selection of spacious two-bedroom rental residences. Find the perfect floor plan to fit your lifestyle.



2.23.24

All renderings, amenities, existing or future views and photos depicted or otherwise described herein are proposed and conceptual only, and are based upon preliminary development plans, which are subject to withdrawal, revisions, and other changes, without notice. Please inquire within for more details.



# The Commons

Bedrooms	Name	Baths	Area	Pricing
2	The Gibraltar	2	1,200-1,800 sq. ft.	\$3,550 - \$3,650
2	The Fairfax	2	1,400-2,000 sq. ft.	\$3,650 - \$3,800
2	The Essex	2	1,400-2,000 sq. ft.	\$3,650 - \$3,800

\*All prices are subject to change.

## Apartment Amenities

- Generous Closet Space
- Resident Controlled Central Air & Heat
- Wall-to-Wall carpet in bedrooms
- Large Dining Area
- Spacious Floor Plans
- Private Patio or Balcony
- Spacious Walk-In Closet

## Community Amenities

- 24-Hour Emergency Maintenance
- Lake/Pond
- Security Lighting
- Cable Ready
- Natural Gas
- Verizon FIOS Available
- Jogging Path/Walking Trail
- Public Transit Nearby

## Appliances

- Dishwasher
- Refrigerator/Freezer
- Microwave
- Oven/Range

**Visit our Website - [www.TheCommonsatUSRNJ.com](http://www.TheCommonsatUSRNJ.com)**

## Rental Office Hours

Monday 9-5	Tuesday 9-5	Wednesday 9-5	Thursday 10-6	Friday 9-5	Saturday Closed	Sunday Closed
---------------	----------------	------------------	------------------	---------------	--------------------	------------------

When you decide to rent with Garden Communities, the following items will be required when you submit your application:

- Non-refundable online application processing Fee. \$85 per applicant
- An online deposit of \$200 in order to reserve an apartment. This amount will be applied to your first month's rent upon approval and ONLY refunded if your application is declined.
- A valid photo ID and social security card

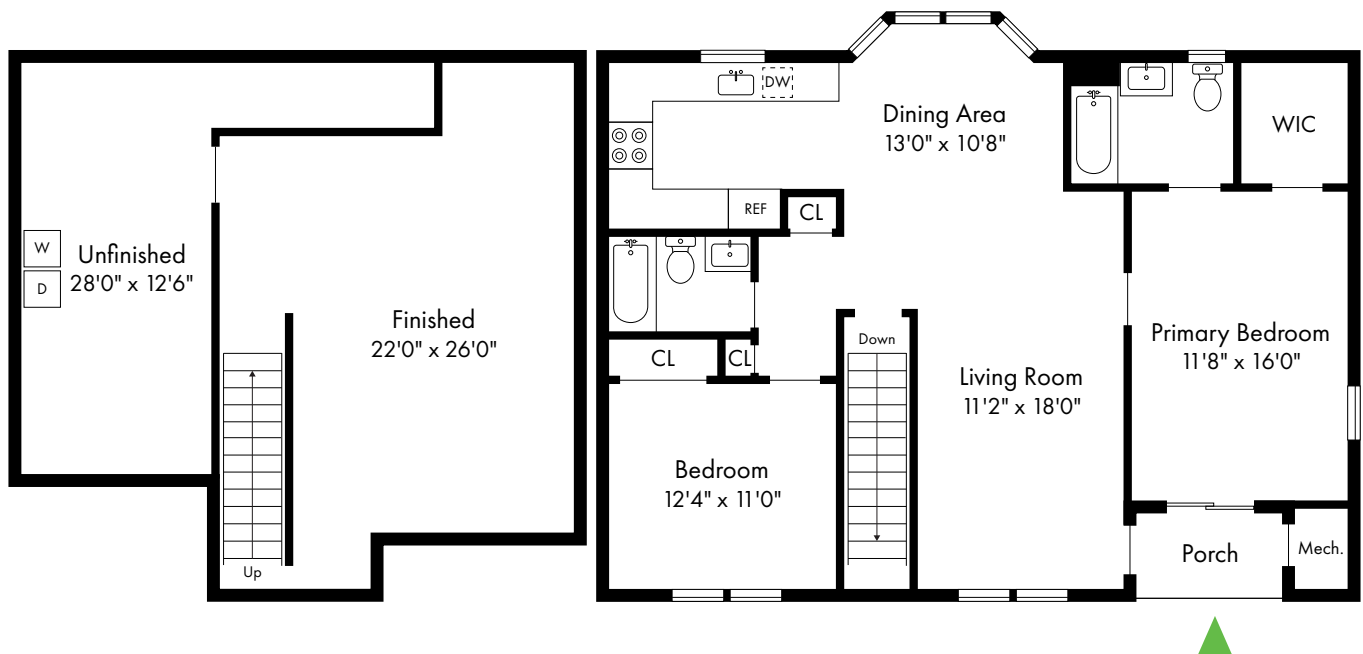
We are an equal opportunity provider. We do not discriminate on the basis of race, color, sex, national origin, religion, handicap or familial status.

# The Commons

Upper Saddle River, NJ

The Essex

2 Bed, 2 Bath | 1,400 - 2,000 SF



Basement\*

First Floor

201.825.8558

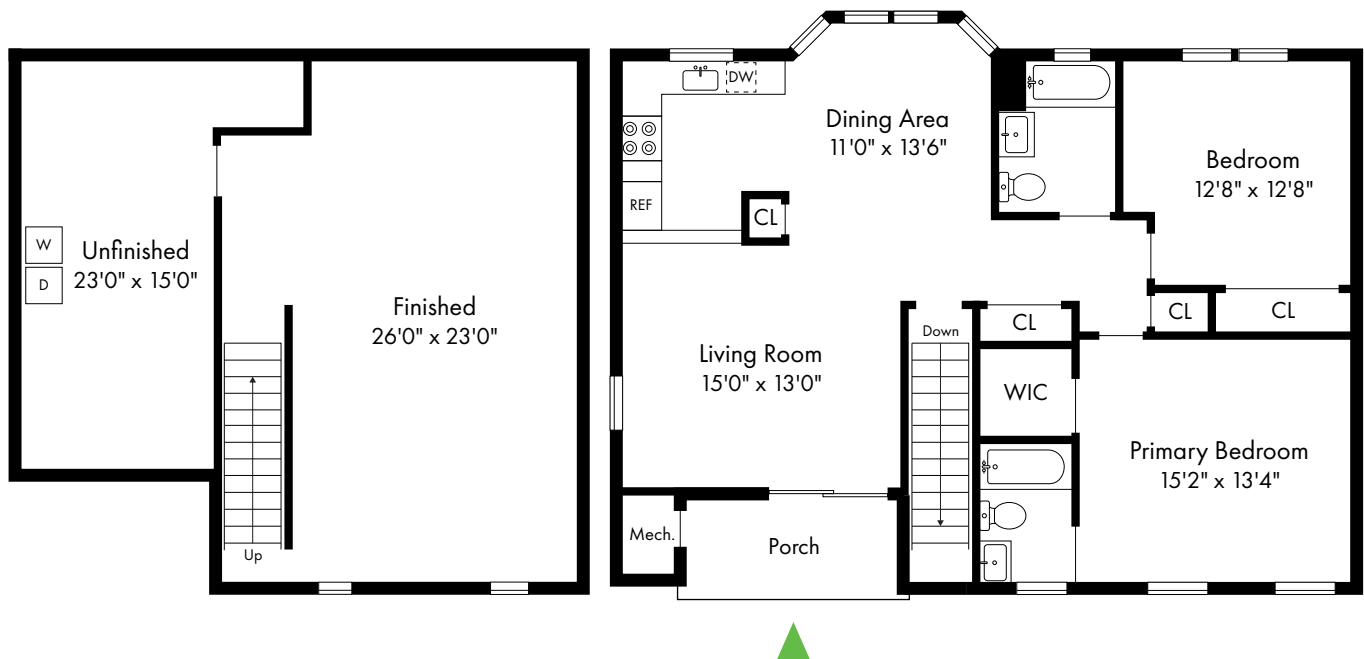
[www.TheCommonsAtUSRNJ.com](http://www.TheCommonsAtUSRNJ.com)

# The Commons

Upper Saddle River, NJ

The Fairfax

2 Bed, 2 Bath | 1,400 - 2,000 SF



Basement\*

First Floor

201.825.8558

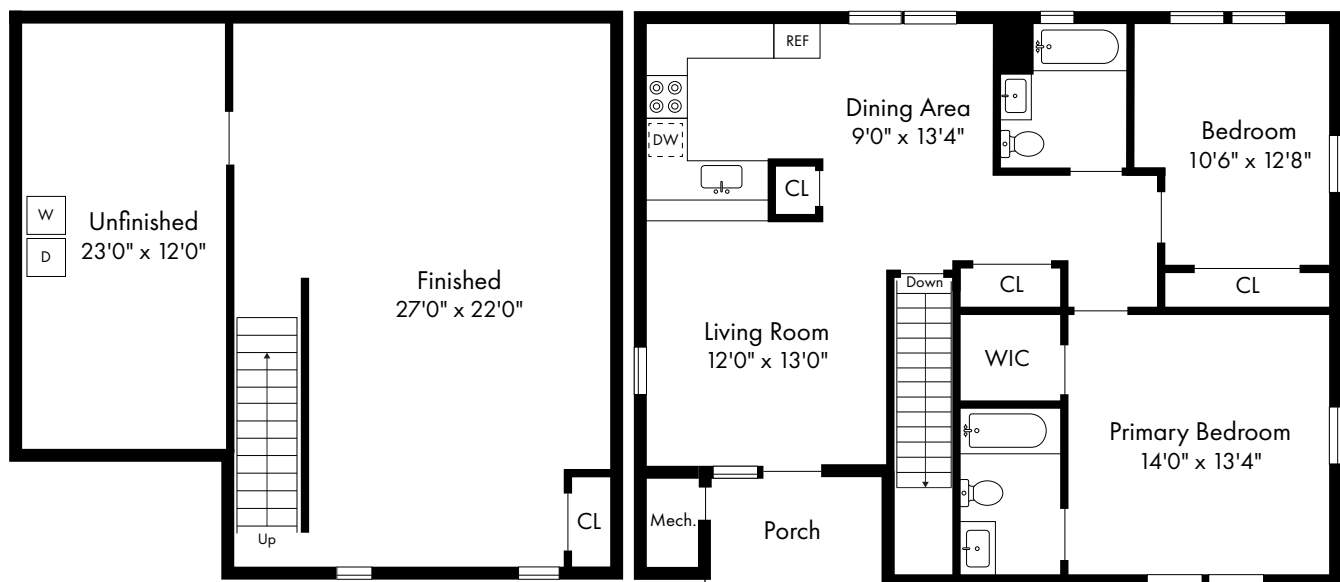
[www.TheCommonsAtUSRNJ.com](http://www.TheCommonsAtUSRNJ.com)

# The Commons

Upper Saddle River, NJ

The Gibraltar

2 Bed, 2 Bath | 1,200 - 1,800 SF



Basement\*

First Floor

201.825.8558

[www.TheCommonsAtUSRNJ.com](http://www.TheCommonsAtUSRNJ.com)