

# THE DAYTON

## LEASING OFFICE

201.581.7246  
DaytonRidgewoodNJ.com

150 South Broad Street  
Ridgewood, NJ 07450



# THE DAYTON

## SPACIOUS HOMES | UPSCALE AMENITIES | CONVENIENT LOCATION

Introducing The Dayton, a thoughtfully designed rental community in Ridgewood, NJ, offering modern features and luxurious amenities for elevated living. Each 1- and 2-bedroom residence boasts soaring 9-foot ceilings, chef-inspired gourmet kitchens with European quartz countertops, and in-suite washers and dryers. Residents enjoy a wealth of community amenities, including a fitness center, landscaped amenity deck, playground, library, rooftop terrace with BBQ and TV, and more. Nestled in the heart of charming downtown Ridgewood, The Dayton is conveniently located near great local shops and eateries, with easy access to major highways and public transportation, making it ideal for commuters.

**The Dayton offers a stunning selection of spacious one- and two-bedroom rental residences.  
Find the perfect floor plan to fit your lifestyle.**



2.23.24

All renderings, amenities, existing or future views and photos depicted or otherwise described herein are proposed and conceptual only, and are based upon preliminary development plans, which are subject to withdrawal, revisions, and other changes, without notice. Please inquire within for more details.



# The Dayton

Bedrooms	Name	Baths	Area	Pricing
1	1A	1	865 sq. ft.	\$3,975 - \$4,265
1	1D - Loft	2	1,472 sq. ft.	\$5,240
2	2A - Den	2	1,322 sq. ft.	\$5,460 - \$5,680
2	2E - Corner Unit	2	1,379 sq. ft.	\$5,535 - \$5,645
2	2H	2	1,331 sq. ft.	\$5,550 - \$5,660
2	2B	2	1,419 sq. ft.	\$5,625 - \$5,865
2	2C - Corner Unit	2	1,674 sq. ft.	\$6,155 - \$6,265
2	2D - Loft	2.5	1,949 sq. ft.	\$6,575
2	2A - Loft	2	1,987 sq. ft.	\$6,575 - \$6,625
2	2D.1	2.5	2,133 sq. ft.	\$6,830

\*All prices are subject to change.

## Apartment Amenities

- 9' Ceilings throughout each unit with Vaulted Ceiling (Select Units)
- European Quartz Kitchen Countertops
- LED Lighting
- Spacious Open Floor Plans
- Chef Inspired Gourmet Kitchens
- Fios Ready
- Private Patio or Balcony
- Spacious Walk-In Closets with Modular Closet System
- Contemporary Interior Architecture
- Imported Italian Custom Cabinetry
- Resident Controlled Central Air & Heat
- Stainless Steel Designer Appliances

## Community Amenities

- 24-Hour Emergency Maintenance
- Covered Reserved Parking and on-site Guest Parking
- Fitness Center with Cardio and Weight Training
- Playroom
- Various Courtyard Terraces
- Community Room
- Daytime Concierge
- Landscaped Amenity Deck
- Rooftop Terrace with BBQ and TV
- Controlled Access at Building Entry
- Elevator
- Library
- Smart Latch Access System

## Appliances

- Dishwasher
- Range Hood
- Microwave
- Refrigerator
- Oven
- Washer & Dryer in Apartment

**Visit our Website - [www.DaytonRidgewoodNJ.com](http://www.DaytonRidgewoodNJ.com)**

## Rental Office Hours

Monday 10-5	Tuesday 10-5	Wednesday 10-5	Thursday 10-5	Friday 10-5	Saturday Closed	Sunday Closed
----------------	-----------------	-------------------	------------------	----------------	--------------------	------------------

When you decide to rent with Garden Communities, the following items will be required when you submit your application:

- Non-refundable online application processing Fee. \$85 per applicant
- An online deposit of \$500 in order to reserve an apartment. This amount will be applied to your first month's rent upon approval and ONLY refunded if your application is declined.
- A valid photo ID and social security card

We are an equal opportunity provider. We do not discriminate on the basis of race, color, sex, national origin, religion, handicap or familial status.

# The Dayton

**One Bedroom Floor Plan**  
with 1 Bath, 769 sq. ft.

1C.A

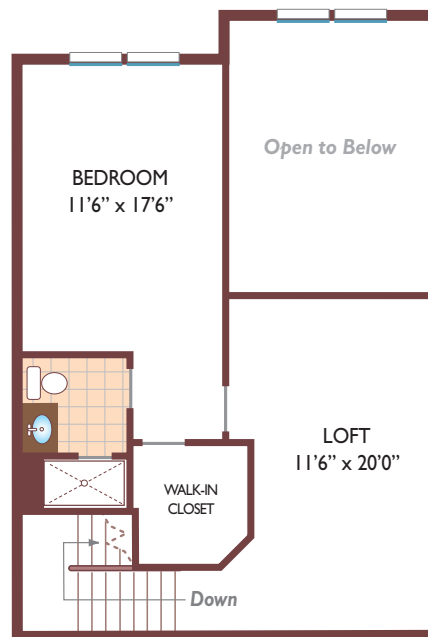
**One Bedroom Floor Plan**  
with 1 Bath, 865 - 900 sq. ft.

1A



**One Bedroom Floor Plan**  
with 2 Bath, 1472 sq. ft.

1D Loft



All dimensions, positions, locations and details are approximate.  
All rent prices and community information subject to change.



# The Dayton

**Two Bedroom Floor Plan**  
with 2 Bath, 1322 - 1350 sq. ft

2A

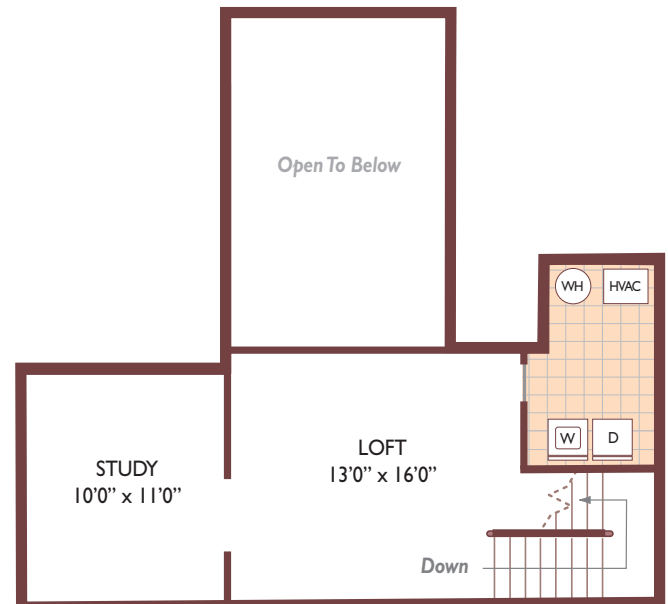
**Two Bedroom Floor Plan**  
with 2 Bath, 1674 sq. ft.

2C



**Two Bedroom Floor Plan**  
with 2 Bath, 1987 - 2026 sq. ft.

2A Loft



All dimensions, positions, locations and details are approximate.  
All rent prices and community information subject to change.



# The Dayton

**Two Bedroom Floor Plan**  
with 1 Bath, 995 sq. ft.

**2GA**



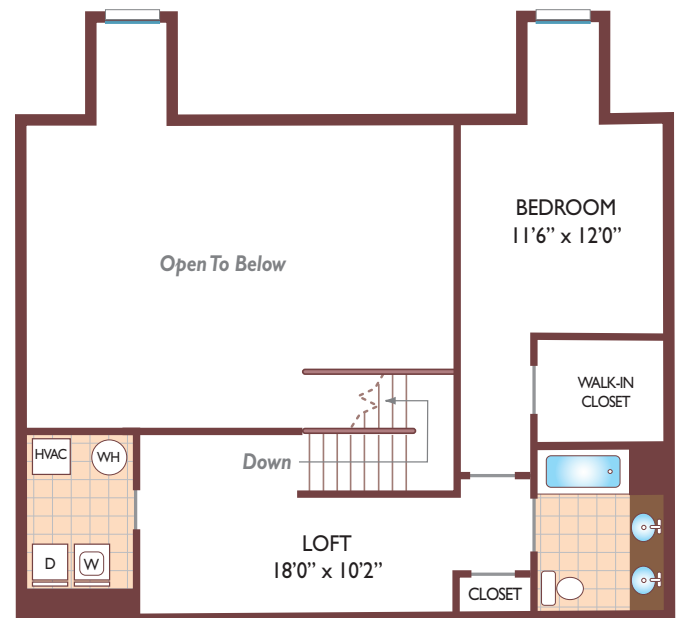
**Two Bedroom Floor Plan**  
with 2 Bath, 1379 sq. ft.

**2E**



**Two Bedroom Floor Plan with**  
2.5 Bath, 1949-2133 sq. ft.

**2D Loft**



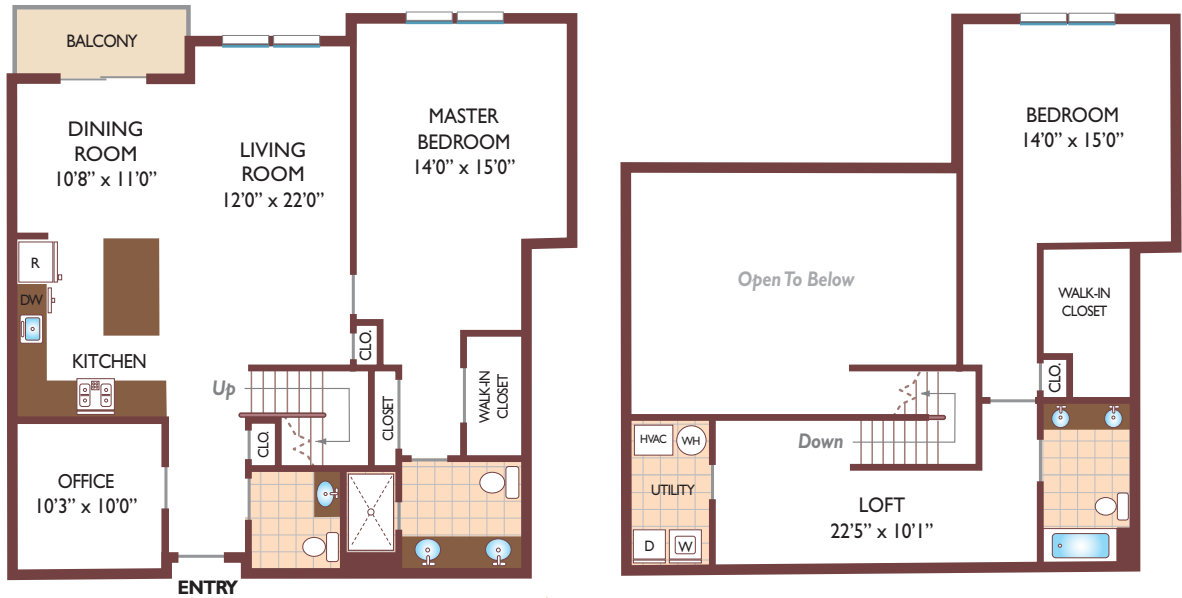
All dimensions, positions, locations and details are approximate.  
All rent prices and community information subject to change.



# The Dayton

**Two Bedroom Floor Plan**  
with 2.5 Baths, 2015 sq. ft.

2D.1



**Two Bedroom Floor Plan**  
with 2 Bath, 1419 sq. ft.

2B



**Three Bedroom Floor Plan**  
with 2 Bath, 1437 sq. ft.

3A.A



Davton3AA-2.1437

All dimensions, positions, locations and details are approximate.  
All rent prices and community information subject to change.

