

VAIL MANOR

186 Vail Road, Parsippany, NJ 07054 (973) 665-6312



Vail Manor is an age 55+ adult community of 130 rental units in the Morris County Township of Parsippany, N.J. Each residence boasts contemporary kitchens with dishwasher, refrigerator, oven and microwave, carpeting throughout, jet tub and central air conditioning. Apartments are available with either one or two bedrooms and range from 437 to 1,300 square feet of space. Vail Manor is also making upgrades to "Go Green". Vail Manor is conveniently located near public transportation. We offer onsite laundry facilities and 24-hour emergency maintenance.

www.VailManorNJ.com (973) 665-6312



WE ARE AN EQUAL HOUSING OPPORTUNITY PROVIDER. WE DO NOT DISCRIMINATE ON THE BASIS OF RACE, COLOR, SEX, NATIONAL ORIGIN, RELIGION, HANDICAP OR FAMILIAL STATUS.

WF-VailManor110416



Vail Manor - 55+

Bedrooms	Name	Baths	Area	Pricing
1	V1L	1	485 sq. ft.	\$1,990
1	V1S	1	370 sq. ft.	\$1,855 - \$1,890
2	V2B2b	2	370 sq. ft.	\$2,195 - \$2,680
2	V2B	1	510 sq. ft.	\$1,995 - \$2,605

*All prices are subject to change.

Apartment Amenities

- Jet Tub
- Plush Wall-To-Wall Carpet
- Resident Controlled Central Air & Heat

Community Amenities

- 24-Hour Emergency Maintenance
- Laundry Facility
- Security Lighting
- Cable Ready
- Natural Gas
- Community Room
- Public Transit Nearby

Appliances

- Dishwasher
- Refrigerator/Freezer
- Microwave
- Oven/Range

Visit our Website - www.VailManorNJ.com

Rental Office Hours

Monday By Appt	Tuesday By Appt	Wednesday 9-5	Thursday By Appt	Friday By Appt	Saturday By Appt	Sunday By Appt
-------------------	--------------------	------------------	---------------------	-------------------	---------------------	-------------------

When you decide to rent with Garden Communities, the following items will be required when you submit your application:

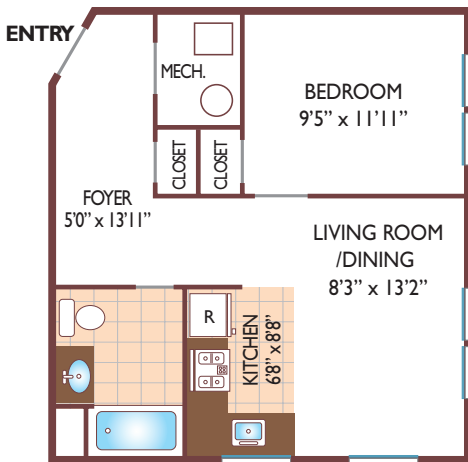
- Non-refundable online application processing Fee. \$50 per applicant
- An online deposit of \$500 in order to reserve an apartment. This amount will be applied to your first month's rent upon approval and ONLY refunded if your application is declined.
- A valid photo ID, social security card and two current pay stubs.

We are an equal opportunity provider. We do not discriminate on the basis of race, color, sex, national origin, religion, handicap or familial status.

Vail Manor

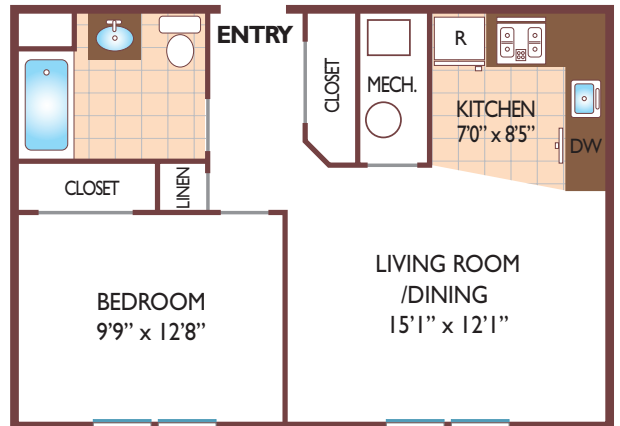
One Bedroom Floor Plan

Standard
with 1 Bath, 440 sq. ft.



One Bedroom Floor Plan

Deluxe
with 1 Bath, 510 sq. ft.



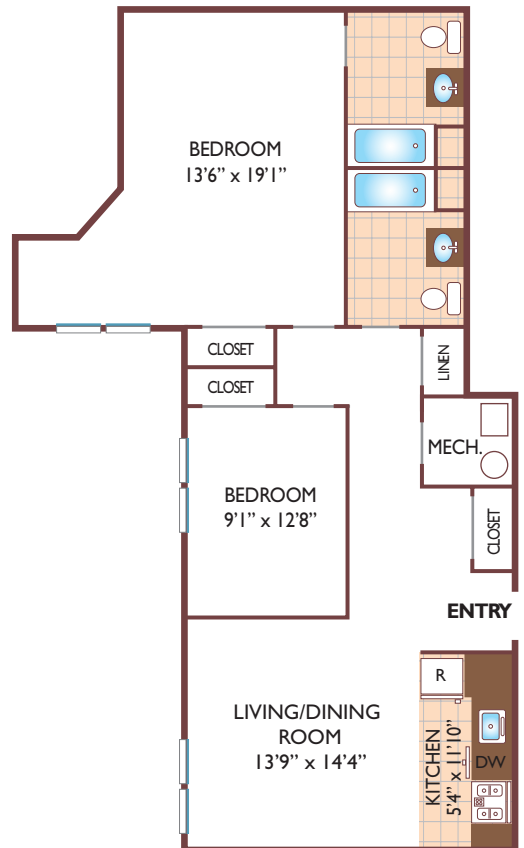
Two Bedroom Floor Plan

Standard
with 1 Bath, 850 sq. ft.



Two Bedroom Floor Plan

Luxury
with 2 Bath, 1005 sq. ft.



All dimensions, positions, locations and details are approximate.

All rent prices and community information subject to change.

