

WALNUT HILL

LEASING OFFICE

908.741.8743
RentWalnutHillNJ.com

35 Walnut Road
Clark, NJ 07066



WALNUT HILL

SPACIOUS HOMES | RESORT-STYLE AMENITIES | CONVENIENT LOCATION

Walnut Hill in Clark, NJ offers oversized, 1- and 2- bedroom apartments (up to 1,900+ square feet!) that are well-appointed with modern features. The residences at Walnut Hill feature private balconies or patios, wood laminate flooring, kitchens with stainless steel appliances and quartz countertops, and bathrooms with designer finishes. Each apartment also comes with a full-size washer and dryer for added convenience. Residents of Walnut Hill have access to a wide range of on-site amenities, including a fitness center, entertainment lounge and game room, and outdoor swimming pool. Walnut Hill has a pet-friendly policy that allows residents to bring their furry friends with them, too!

Walnut Hill offers a stunning selection of spacious one- and two- bedroom rental residences.
Find the perfect floor plan to fit your lifestyle.



All renderings, amenities, existing or future views and photos depicted or otherwise described herein are proposed and conceptual only, and are based upon preliminary development plans, which are subject to withdrawal, revisions, and other changes, without notice. Please inquire within for more details.

12.13.23

Walnut Hill

Bedrooms	Name	Baths	Area	Pricing
1	1a	1	942 sq. ft.	\$3,050 - \$3,150
2	2A	2	1,386 sq. ft.	\$3,350 - \$3,550
2	2D.1	2	1,508 sq. ft.	\$3,695 - \$3,750
2	2C	2	1,506 sq. ft.	\$3,950
2	2D	2	1,627 sq. ft.	\$3,950 - \$4,050
2	2B	2	1,777 sq. ft.	\$4,050 - \$4,250
2	2E	2	1,964 sq. ft.	\$4,150

*All prices are subject to change.

Apartment Amenities

- Breakfast Area
- Island Kitchens
- Smoke-Free
- Carpeted Bedrooms
- Oversized Closets
- Spacious Floor Plans
- Fireplace (select models)
- Private Patio or Balcony
- Voluminous 9' High Ceilings

Community Amenities

- 24-Hour Emergency Maintenance
- Elevator
- Clubhouse
- Residents Lounge
- Covered Parking
- Swimming Pool

Appliances

- Dishwasher
- Refrigerator/Freezer
- Microwave
- Washer & Dryer in Apartment
- Oven/Range

Visit our Website - www.RentWalnutHillNJ.com

Rental Office Hours

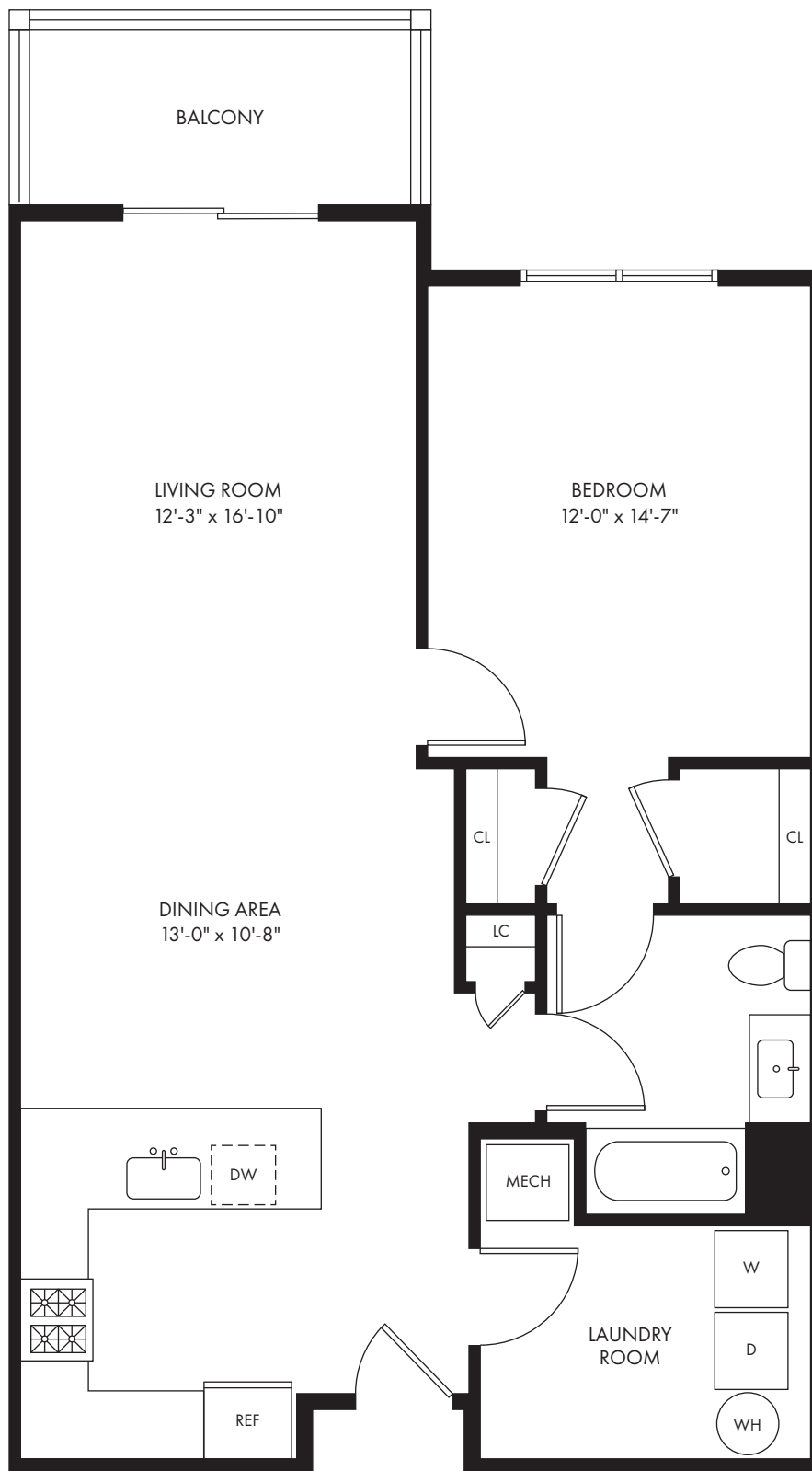
Monday 8:30 - 4:30	Tuesday 8:30 - 4:30	Wednesday 8:30 - 4:30	Thursday 8:30 - 4:30	Friday 8:30 - 4:30	Saturday 10 - 4	Sunday Closed
-----------------------	------------------------	--------------------------	-------------------------	-----------------------	--------------------	------------------

When you decide to rent with Garden Communities, the following items will be required when you submit your application:

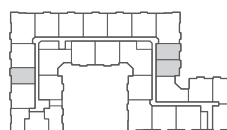
- Non-refundable online application processing Fee. \$85 per applicant
- An online deposit of \$500 in order to reserve an apartment. This amount will be applied to your first month's rent upon approval and ONLY refunded if your application is declined.
- A valid photo ID and social security card

We are an equal opportunity provider. We do not discriminate on the basis of race, color, sex, national origin, religion, handicap or familial status.

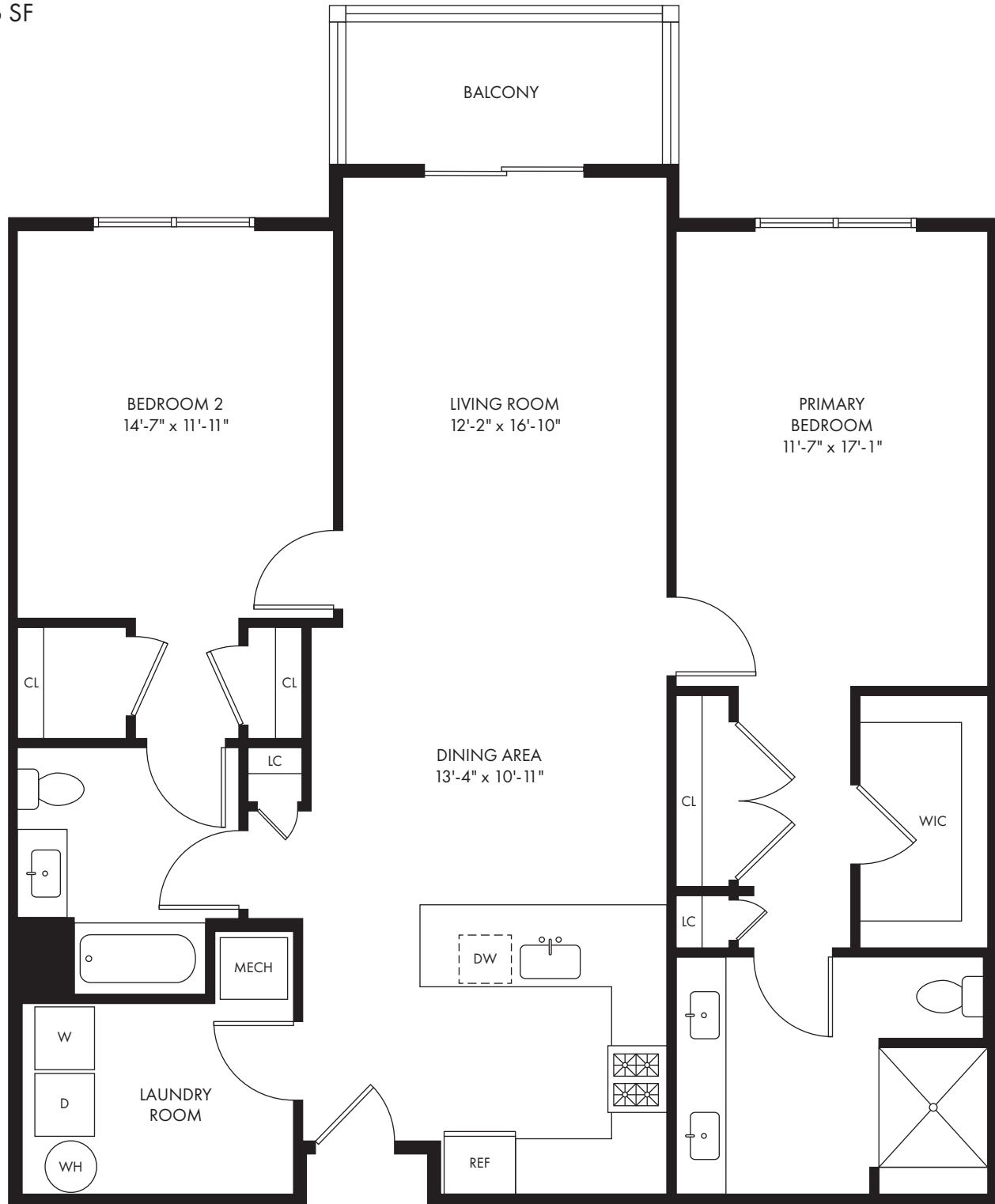
1 BEDROOM | 1 BATH
WITH BALCONY
942 SF



908.215.4020
RentWalnutHillNJ.com



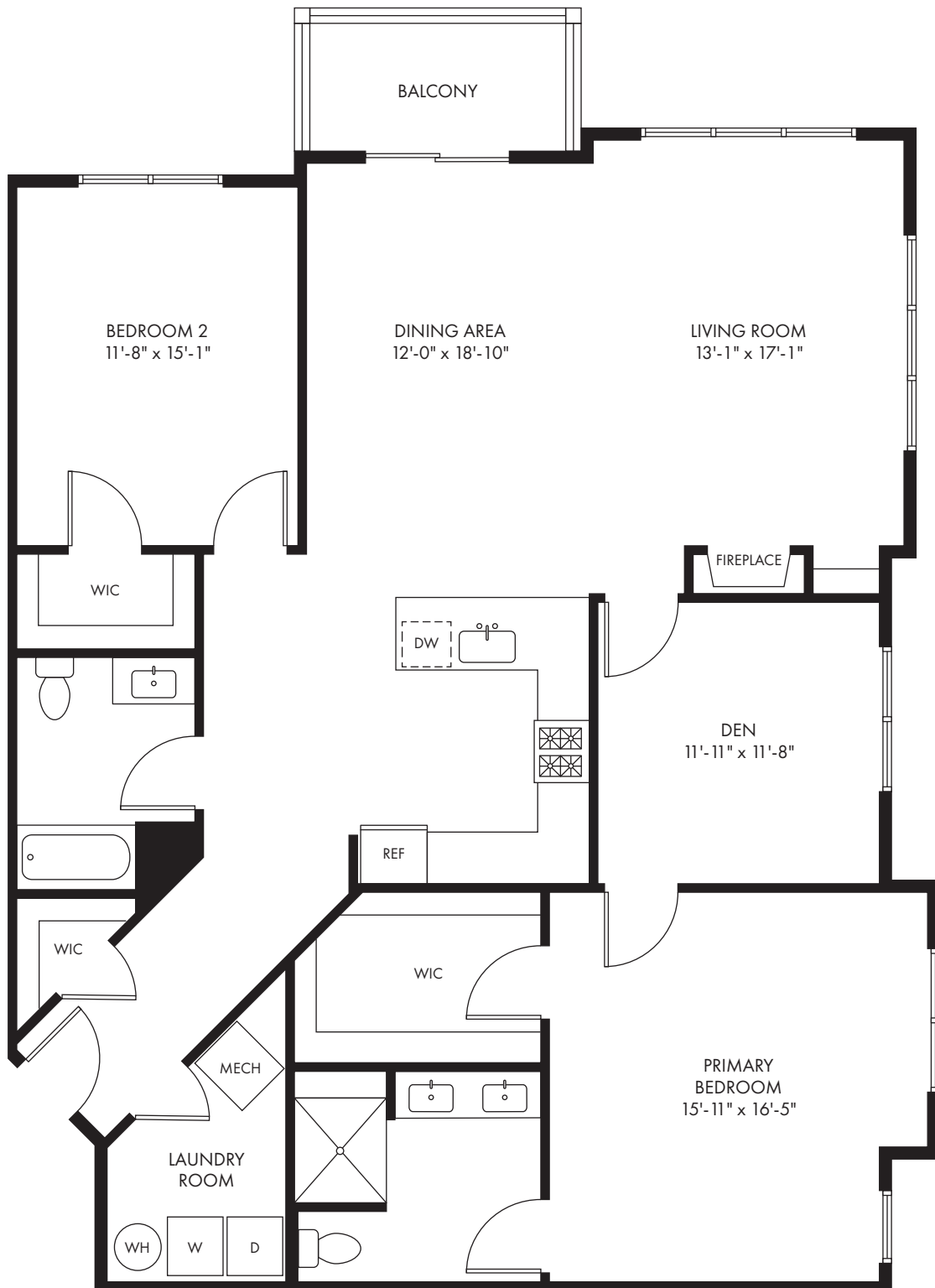
2 BEDROOM | 2 BATHS
WITH BALCONY
1386 SF



908.215.4020
RentWalnutHillNJ.com



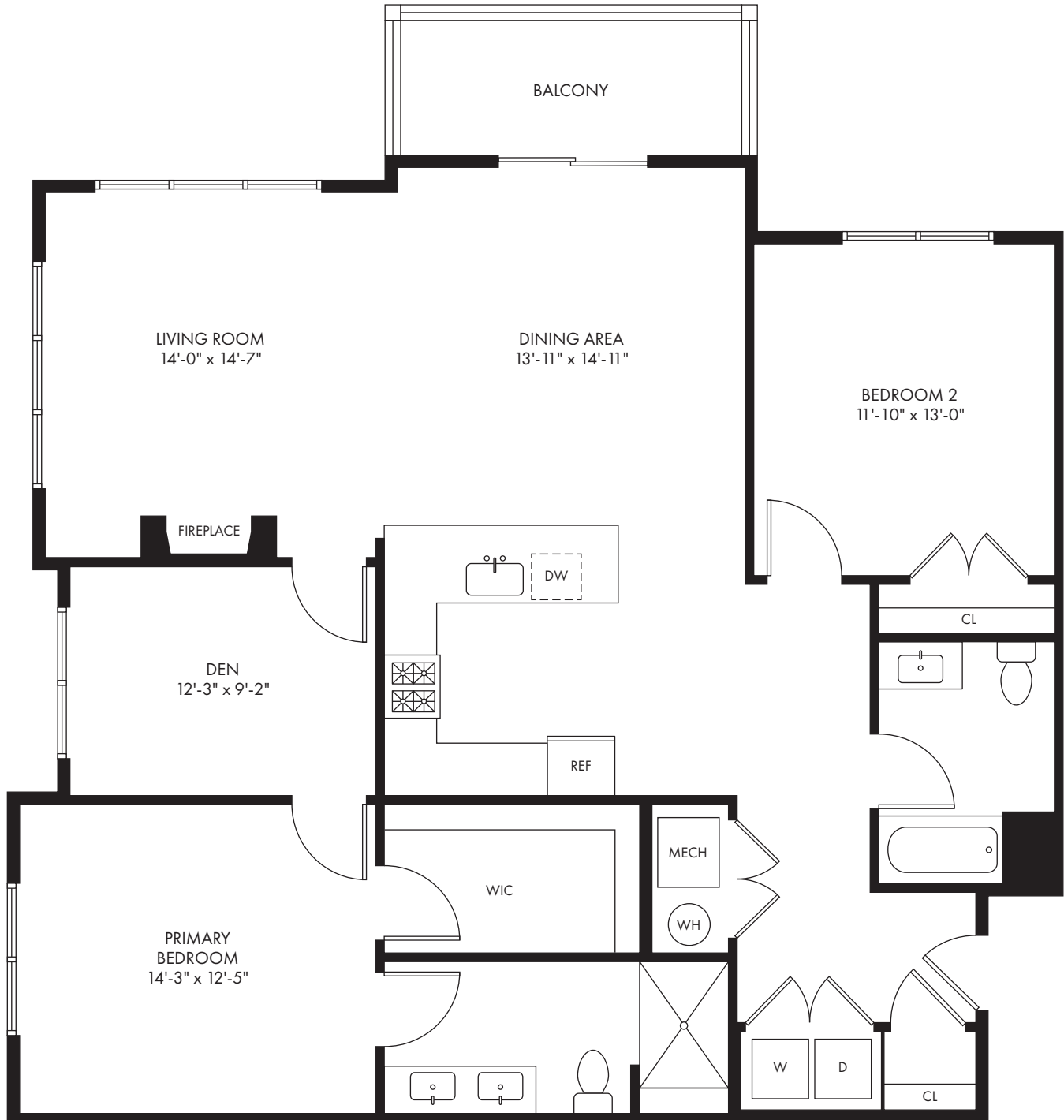
CORNER 2 BEDROOM | 2 BATHS | DEN
WITH BALCONY
1777 SF



908.215.4020
RentWalnutHillNJ.com




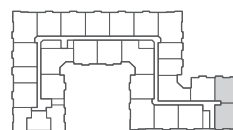
CORNER 2 BEDROOM | 2 BATHS | DEN
WITH BALCONY
1506 SF



908.215.4020

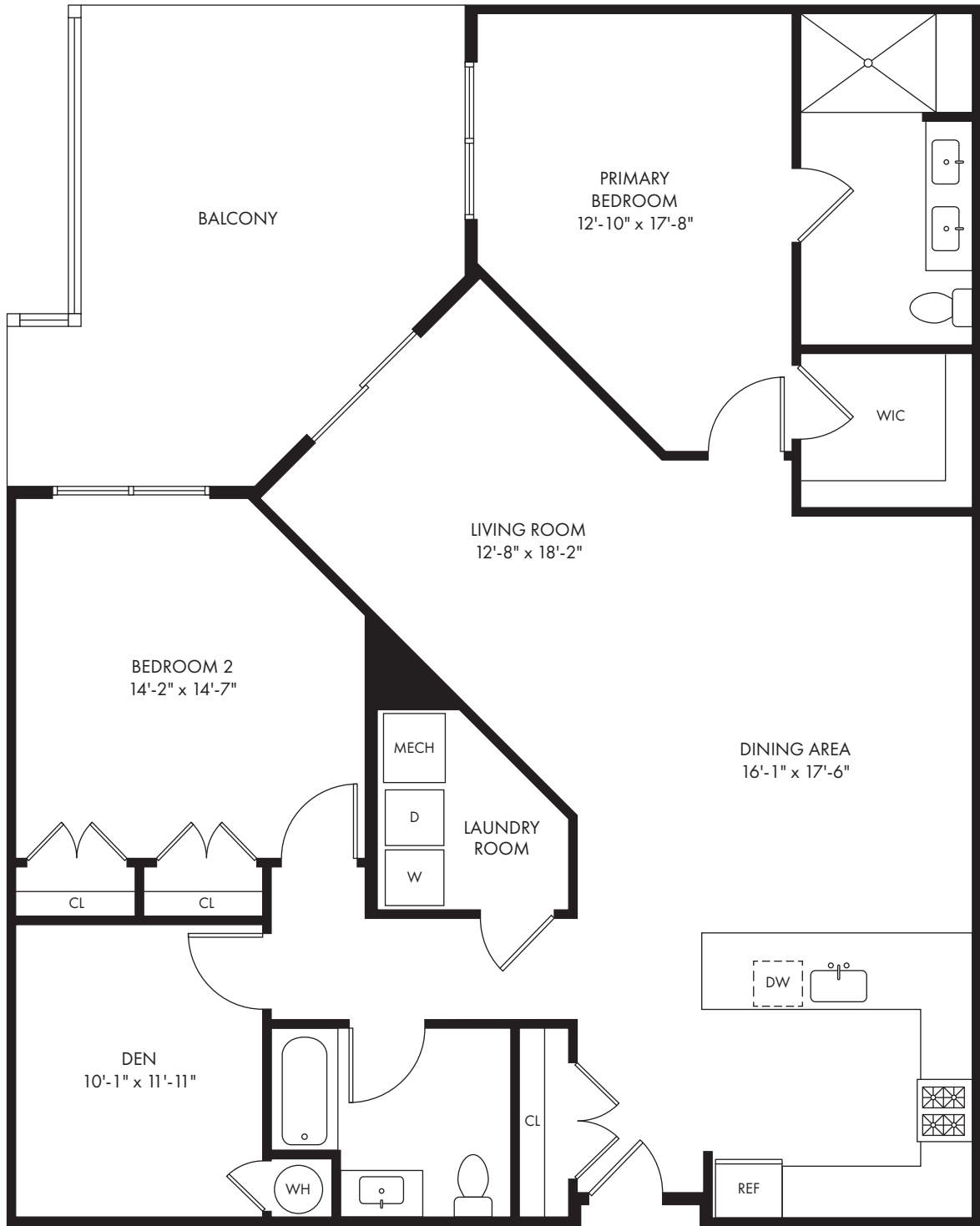
RentWalnutHillNJ.com

 All dimensions, positions, locations and details are approximate.



 Garden Communities

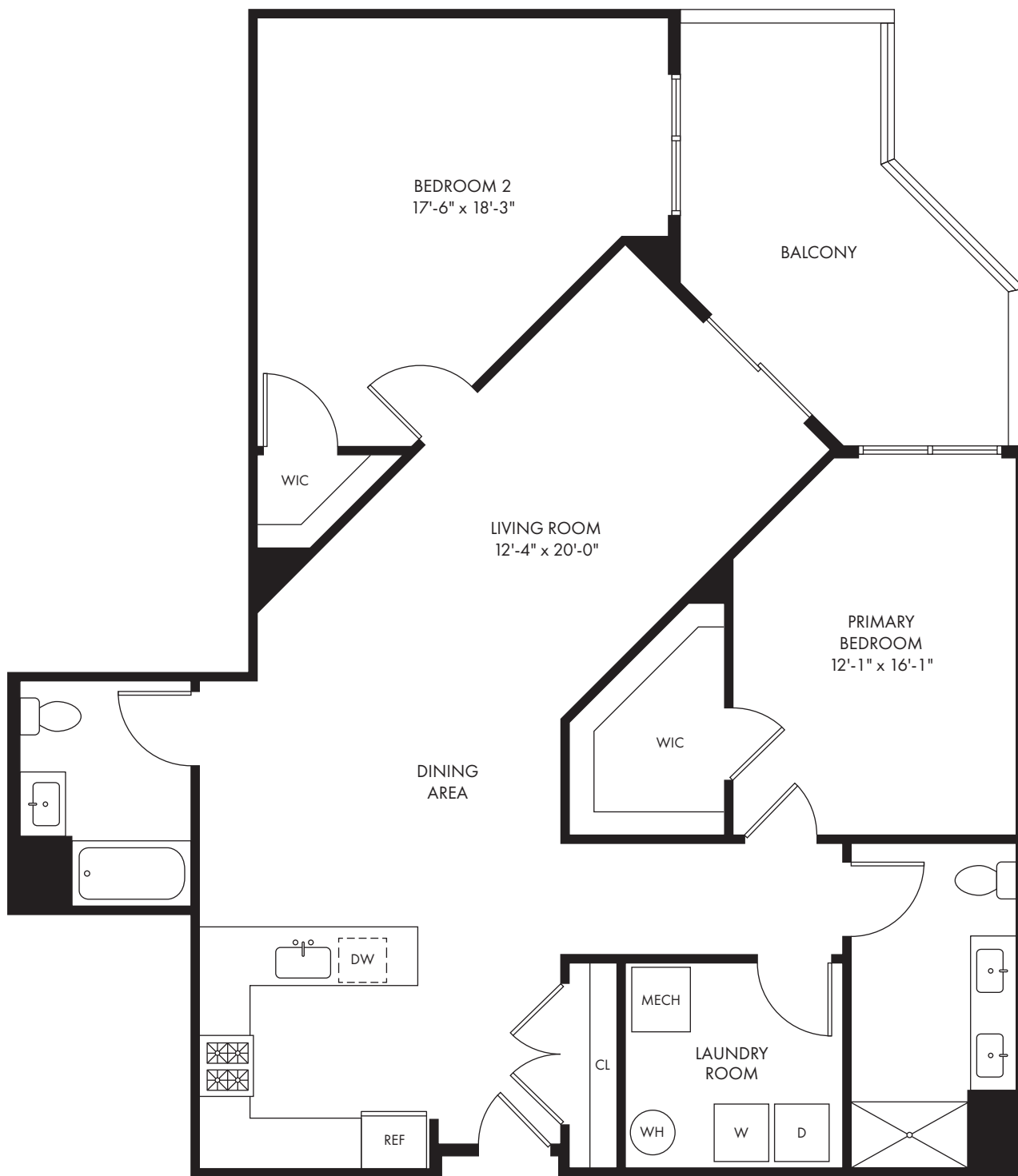
2 BEDROOM | 2 BATHS | DEN
WITH BALCONY
1626 SF



908.215.4020
RentWalnutHillNJ.com



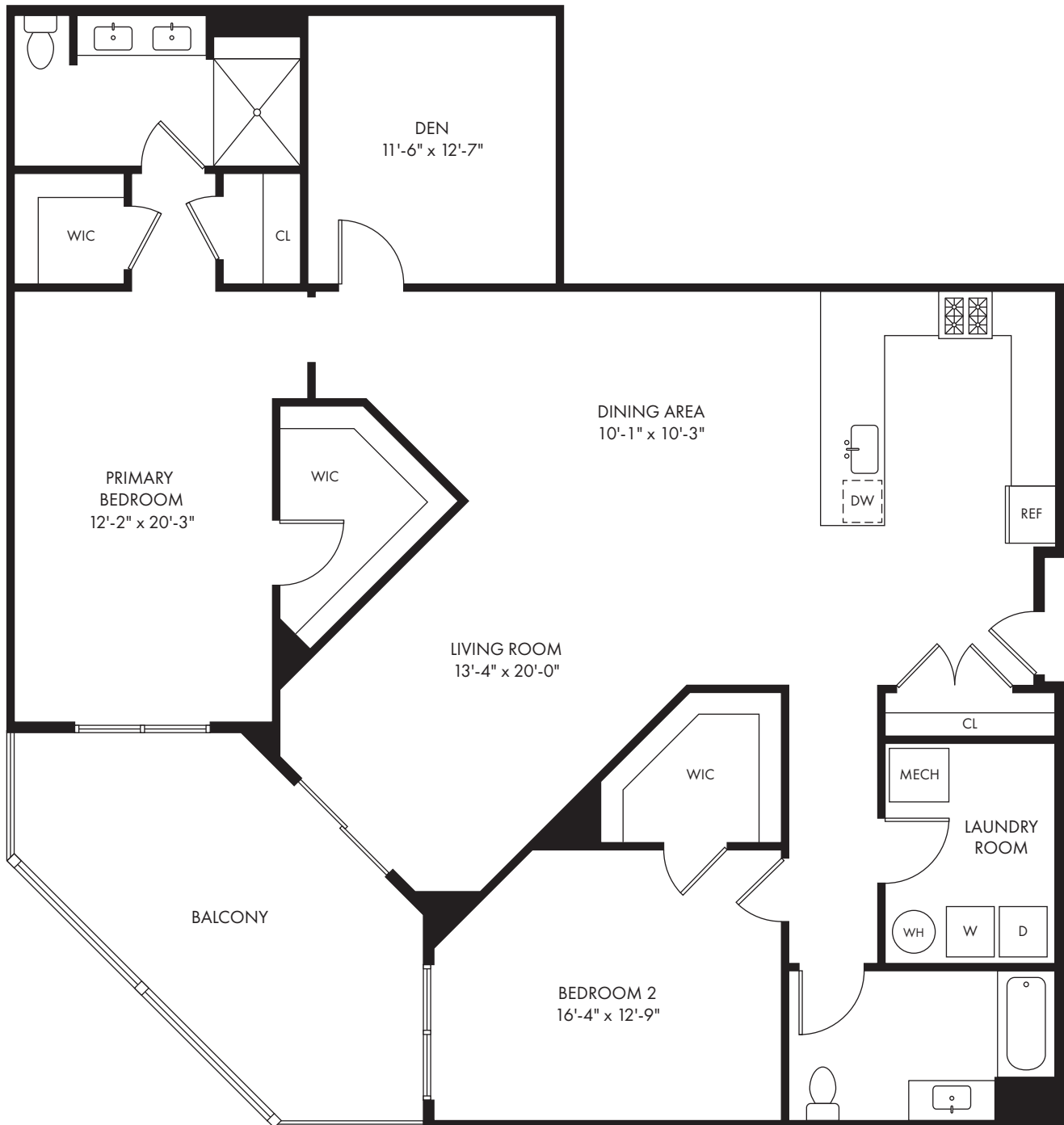
2 BEDROOM | 2 BATH
WITH BALCONY
1508 SF



908.215.4020

RentWalnutHillNJ.com

2 BEDROOM | 2 BATHS | DEN
WITH BALCONY
1964 SF



908.215.4020
RentWalnutHillNJ.com

