

# WASHINGTON PROMENADE

## LEASING OFFICE

201.740.2930  
WashingtonPromenadeNJ.com

546 Washington Avenue  
Dumont, NJ 07628



# WASHINGTON PROMENADE

## SPACIOUS HOMES | UPSCALE AMENITIES | CONVENIENT LOCATION

Located in the peaceful Bergen County suburb of Dumont, Washington Promenade is a charming rental community featuring 146 luxury apartments. These well-appointed 1- and 2- bedroom residences offer spacious layouts, complete with an in-suite washer and dryer, quartz countertops, and a balcony or patio in select homes. Residents can indulge in an array of community amenities, including a swimming pool with BBQ area, community room, fitness center, and the convenience of available storage rooms and garages. Just moments from Manhattan, Washington Promenade is a commuter's dream and a perfect place to call home.

Washington Promenade offers a stunning selection of spacious one- and two-bedroom rental residences. Find the perfect floor plan to fit your lifestyle.



2.26.24

All renderings, amenities, existing or future views and photos depicted or otherwise described herein are proposed and conceptual only, and are based upon preliminary development plans, which are subject to withdrawal, revisions, and other changes, without notice. Please inquire within for more details.

# Washington Promenade

Bedrooms	Name	Baths	Area	Pricing
1	One Bedroom - A-01	1	751-860 sq. ft.	\$2,735
1	One Bedroom - A-02	1	816 sq. ft.	\$2,735 - \$2,835
1	One Bedroom - A-04	1.5	1,014 sq. ft.	\$2,810 - \$2,860
1	One Bedroom with Den - A-03	1	961 sq. ft.	\$3,185 - \$3,235
1	One Bedroom with Den A-05	1.5	1,152 sq. ft.	\$3,310
2	Two Bedroom - B-03	2	1,190-1,268 sq. ft.	\$3,795
2	Two Bedroom - B-01	2	1,207 sq. ft.	\$3,820
2	Two Bedroom - B-02	2	1,231-1,245 sq. ft.	\$3,820 - \$3,970
2	Two Bedroom with Den B-04	2	1,322-1,347 sq. ft.	\$3,950 - \$4,050

\*All prices are subject to change.

## Apartment Amenities

- 1- & 2-Bedroom Apartments
- Eat-In Kitchen
- Quartz Kitchen Countertops
- Spacious Walk-In Closet
- Air Conditioning
- Primary Suite with Double Sink (Select Apartments)
- Smoke-Free
- Tiled Bathrooms
- Carpeted Bedrooms (select apartments)
- Private Balcony or Patio (select apartments)
- Spacious Floor Plans

## Community Amenities

- 24-Hour Emergency Maintenance
- Cable Ready
- Elevator
- Garages Available
- Security Lighting
- Swimming Pool with Picnic/Barbecue Area
- Amazon Lockers
- Clubhouse
- Extra Storage
- Package Room
- Smart Latch Access System
- Walking distance to restaurants and shops
- Bike Racks
- Community Room
- Fitness Center
- Public Transportation
- Smoke-Free Community

## Appliances

- Dishwasher
- In-Suite Washers and Dryers
- Microwave
- Oven/Range
- Range Hood
- Refrigerator/Freezer

**Visit our Website - [www.WashingtonPromenadeNJ.com](http://www.WashingtonPromenadeNJ.com)**

## Rental Office Hours

Monday 10-5	Tuesday 10-5	Wednesday 10-5	Thursday 10-5	Friday 10-5	Saturday By Appt	Sunday By Appt
----------------	-----------------	-------------------	------------------	----------------	---------------------	-------------------

When you decide to rent with Garden Communities, the following items will be required when you submit your application:

- Non-refundable online application processing Fee. \$85 per applicant
- An online deposit of \$500 in order to reserve an apartment. This amount will be applied to your first month's rent upon approval and ONLY refunded if your application is declined.
- A valid photo ID and social security card

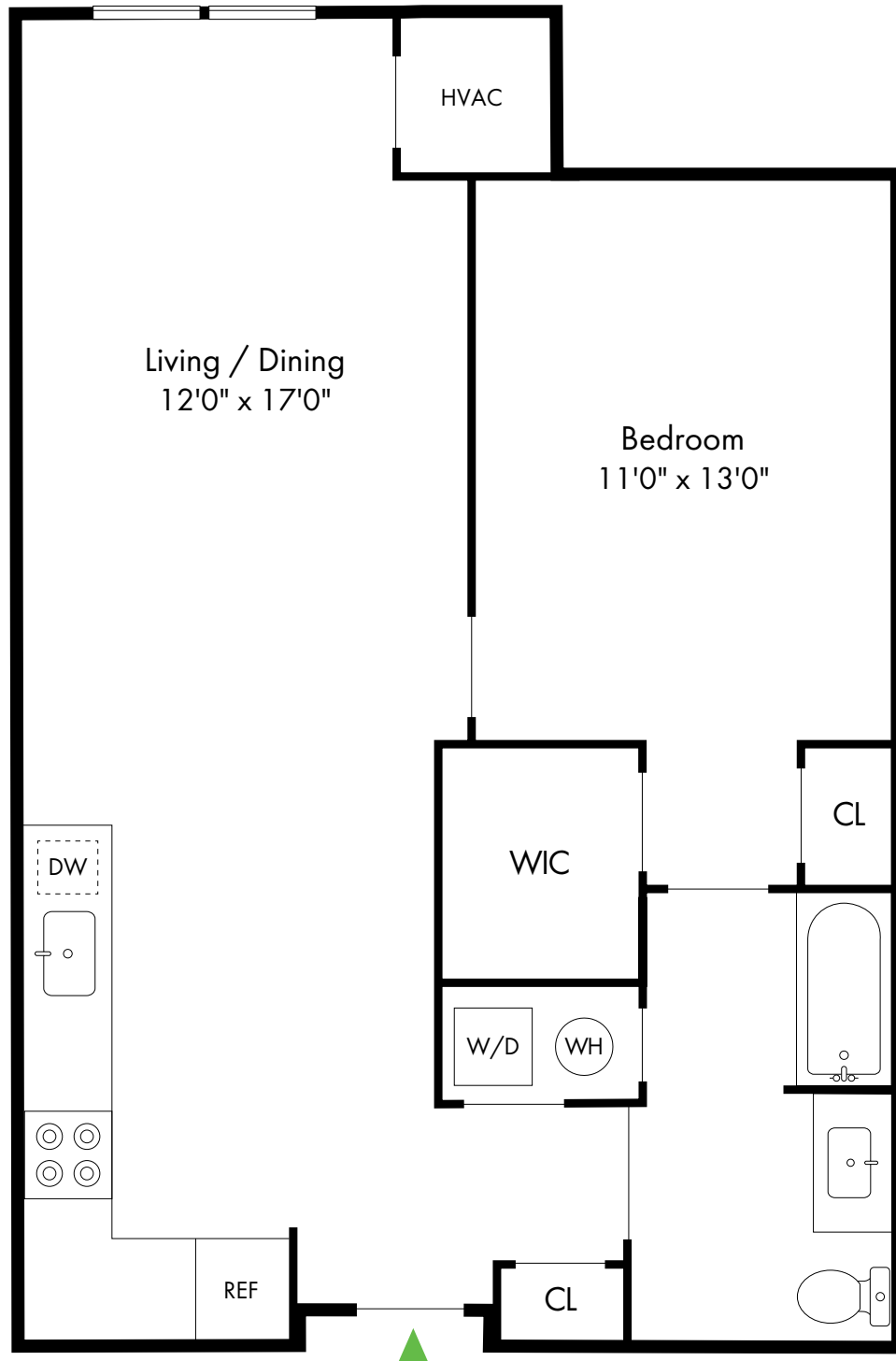
We are an equal opportunity provider. We do not discriminate on the basis of race, color, sex, national origin, religion, handicap or familial status.

# Washington Promenade

Dumont, NJ

One Bedroom – A-01

1 Bed, 1 Bath | 751 - 860 SF

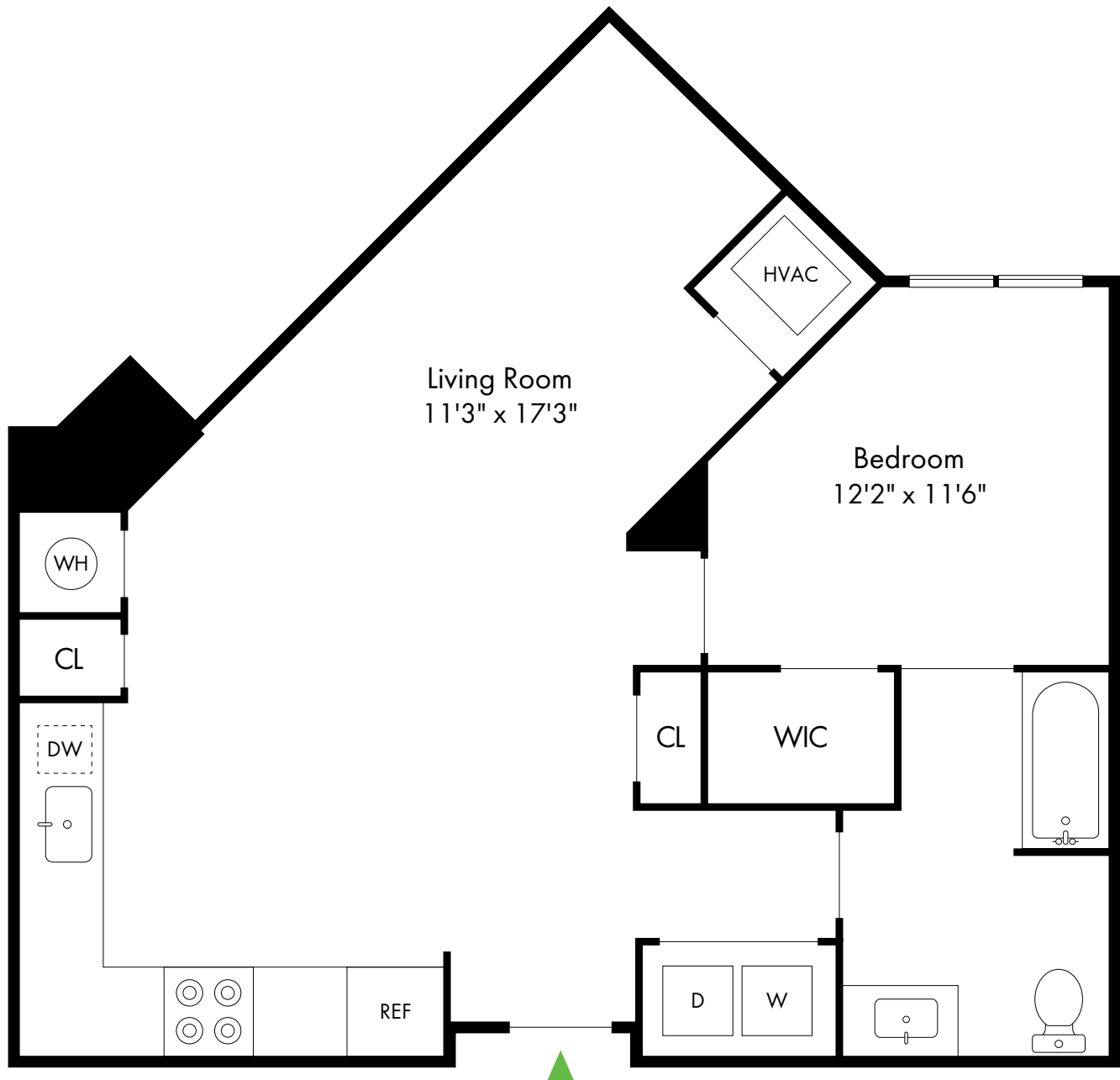


# Washington Promenade

Dumont, NJ

One Bedroom – A-02

1 Bed, 1 Bath | 816 SF

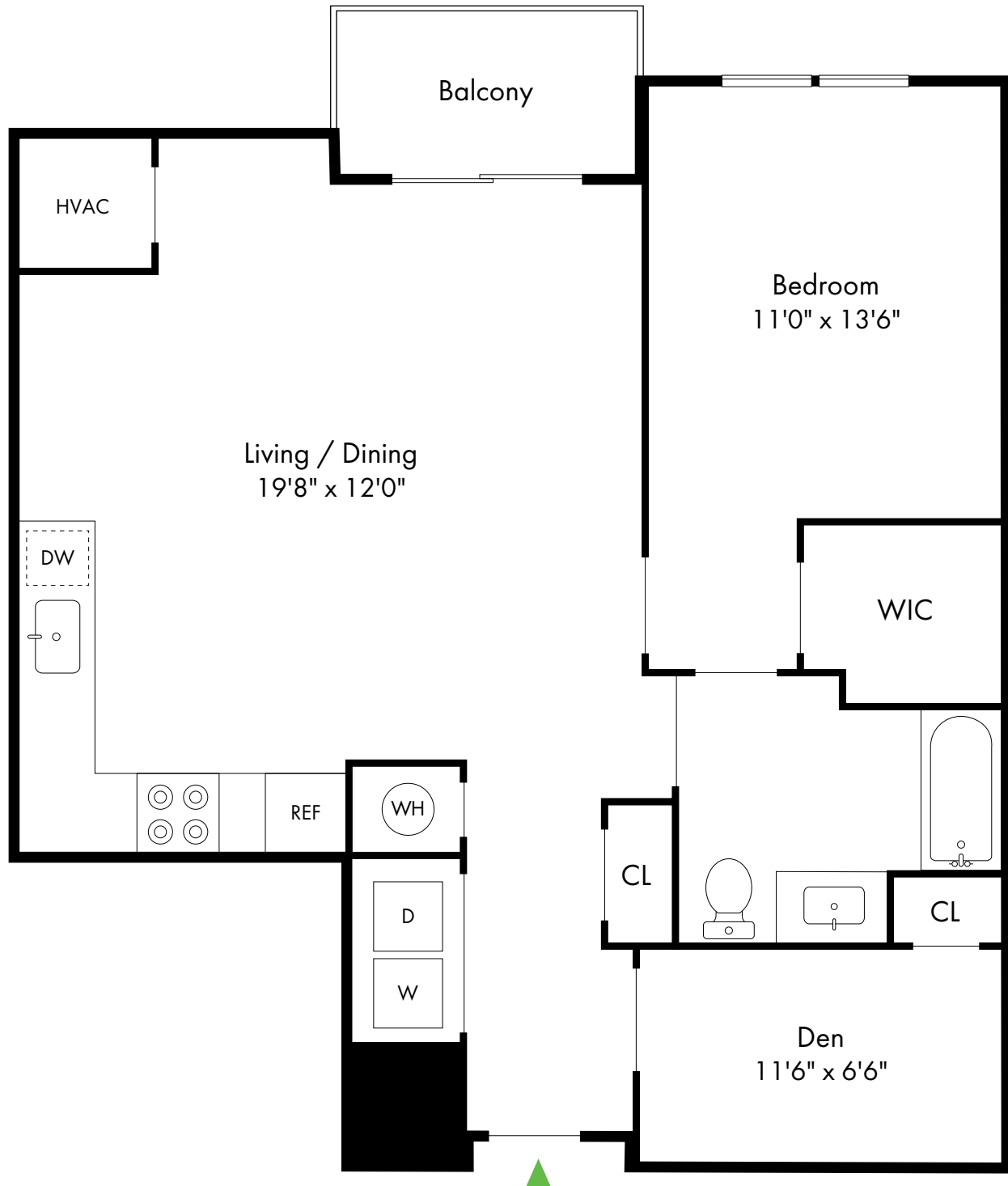


# Washington Promenade

Dumont, NJ

One Bedroom with Den – A-03

1 Bed, 1 Bath | 961 SF



201.285.4493

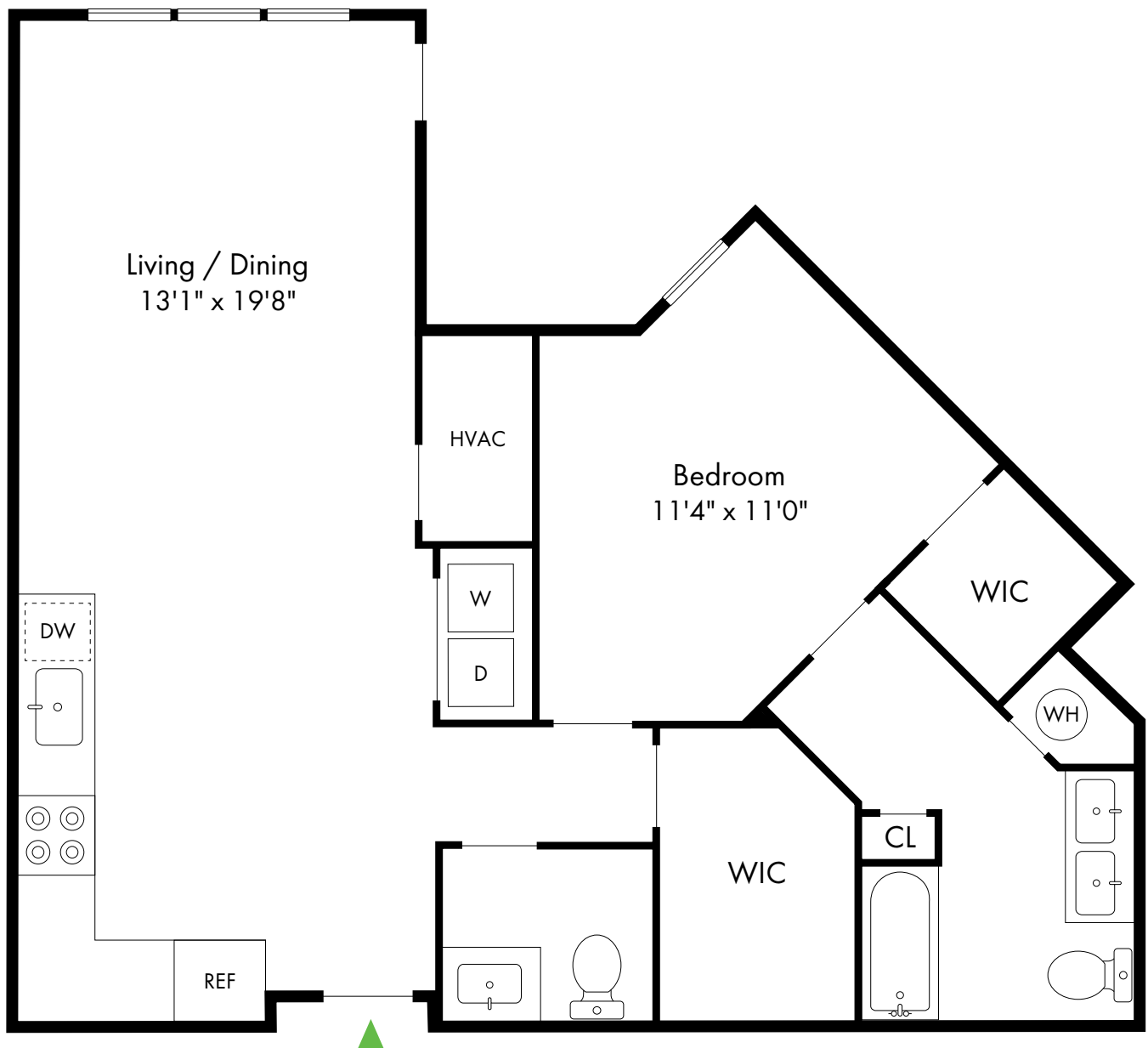
[www.WashingtonPromenadeNJ.com](http://www.WashingtonPromenadeNJ.com)

# Washington Promenade

Dumont, NJ

One Bedroom – A-04

1 Bed, 1.5 Bath | 1,014 SF

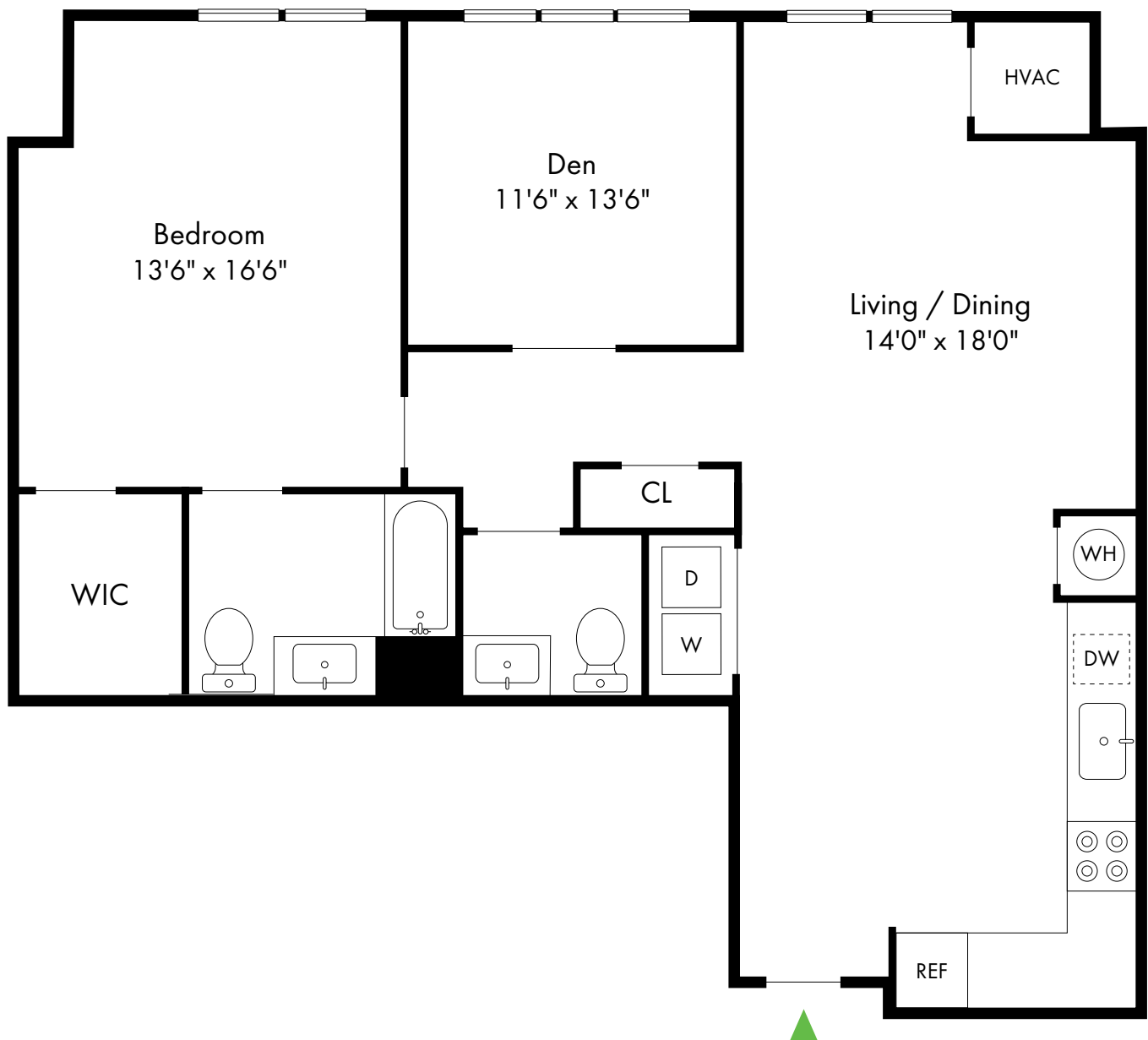


# Washington Promenade

Dumont, NJ

One Bedroom with Den – A-05

1 Bed, 1.5 Bath | 1,152 SF

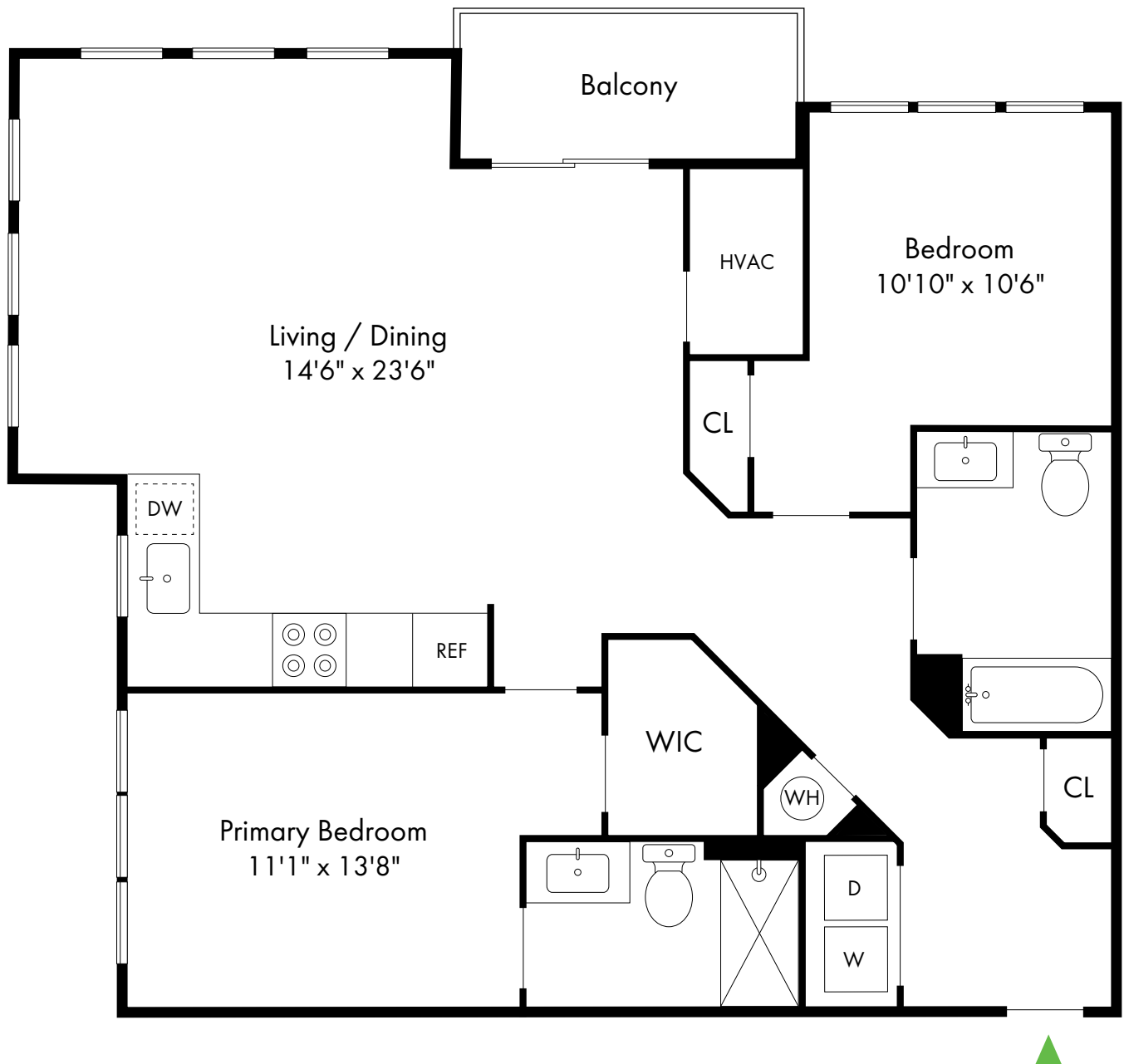


# Washington Promenade

Dumont, NJ

Two Bedroom – B-01

2 Bed, 2 Bath | 1,207 SF



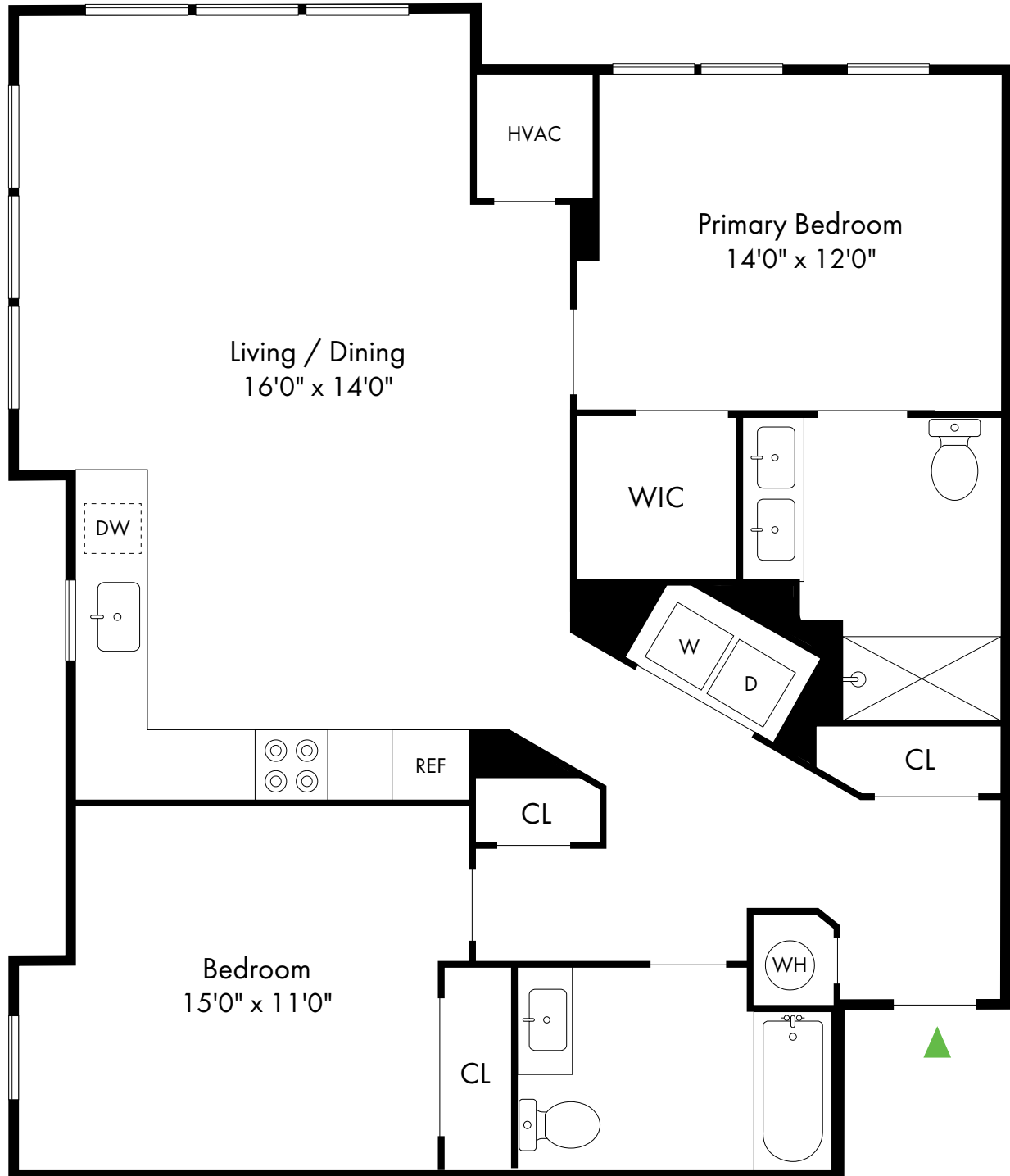


# Washington Promenade

Dumont, NJ

Two Bedroom – B-02

2 Bed, 2 Bath | 1,231 - 1,245 SF

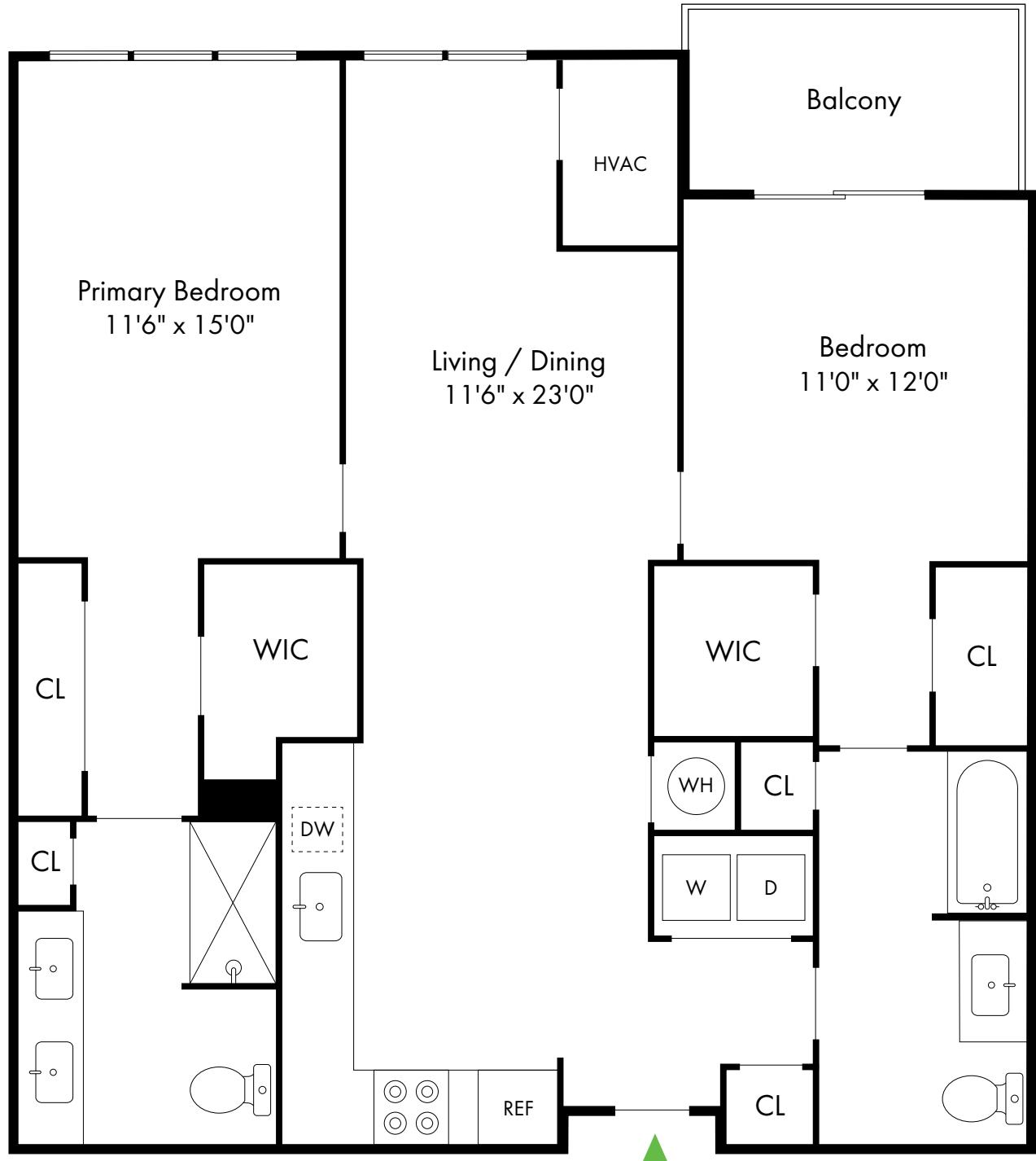


# Washington Promenade

Dumont, NJ

Two Bedroom – B-03

2 Bed, 2 Bath | 1,190 - 1,268 SF



201.285.4493

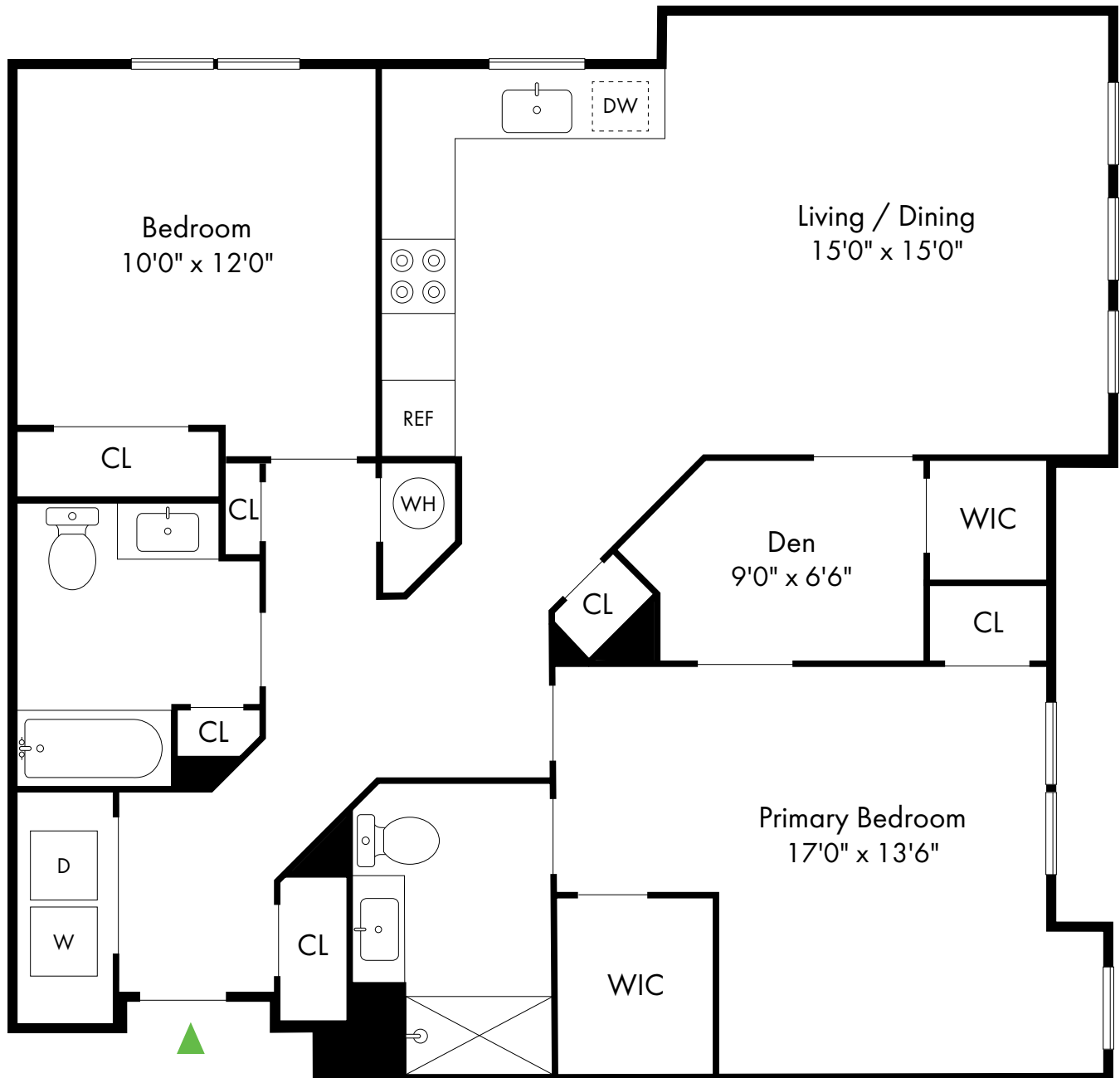
[www.WashingtonPromenadeNJ.com](http://www.WashingtonPromenadeNJ.com)

# Washington Promenade

Dumont, NJ

Two Bedroom with Den – B-04

2 Bed, 2 Bath | 1,322 - 1,347 SF



201.285.4493

[www.WashingtonPromenadeNJ.com](http://www.WashingtonPromenadeNJ.com)