

# WEST END GARDENS

450 West End Avenue, North Plainfield, NJ 07060 (908) 375-6346



West End Gardens is located in the Somerset County Borough of North Plainfield, N.J. and features just 86 garden-style apartments with one or two bedroom layouts ranging from 830 to 1,045 square feet of space. Residence comes with a number of standard appointments including a refrigerator, oven, hardwood flooring and air conditioning. Residents enjoy the added luxury of the community's swimming pool, laundry facility and 24-hour Emergency Maintenance.

[www.WestEndGardensNJ.com](http://www.WestEndGardensNJ.com) (908) 375-6346



WE ARE AN EQUAL HOUSING OPPORTUNITY PROVIDER. WE DO NOT DISCRIMINATE ON THE BASIS OF RACE, COLOR, SEX, NATIONAL ORIGIN, RELIGION, HANDICAP OR FAMILIAL STATUS.

WF-WestEndGar071317



# West End Gardens

Bedrooms	Name	Baths	Area	Pricing
1	One Bedroom	1	830 sq. ft.	\$1,645 - \$1,695
2	Two Bedroom	1	1,045 sq. ft.	\$1,935 - \$1,985

\*All prices are subject to change.

## Apartment Amenities

- Air Conditioning

## Community Amenities

- 24-Hour Emergency Maintenance
- Natural Gas
- Swimming Pool
- Cable Ready
- Pet-Friendly
- Laundry Facility
- Security Lighting

## Appliances

- Oven/Range
- Range Hood
- Refrigerator/Freezer

**Visit our Website - [www.WestEndGardensNJ.com](http://www.WestEndGardensNJ.com)**

## Rental Office Hours

Monday 9-5	Tuesday 9-5	Wednesday 9-5	Thursday 9-5	Friday 9-5	Saturday 10-5	Sunday 9 - 3
---------------	----------------	------------------	-----------------	---------------	------------------	-----------------

When you decide to rent with Garden Communities, the following items will be required when you submit your application:

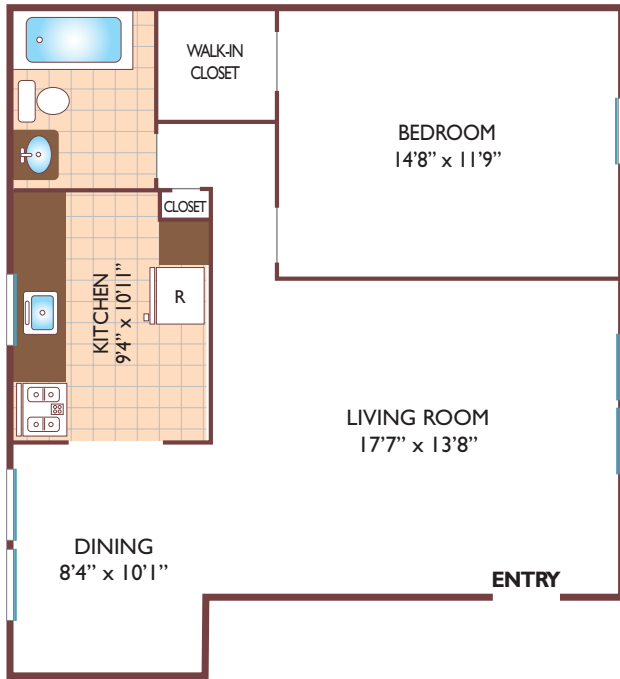
- Non-refundable online application processing Fee. \$75 per applicant
- An online deposit of \$200 in order to reserve an apartment. This amount will be applied to your first month's rent upon approval and ONLY refunded if your application is declined.
- A valid photo ID, social security card and two current pay stubs.

We are an equal opportunity provider. We do not discriminate on the basis of race, color, sex, national origin, religion, handicap or familial status.

# West End Gardens

## One Bedroom Floor Plan

Ground Level Unit  
with 1 Bath, 830 sq. ft.



## Two Bedroom Floor Plan

Upper Level Unit  
with 1 Bath, 1045 sq. ft.



All dimensions, positions, locations and details are approximate.

All rent prices and community information subject to change.