

WEST MILL GARDENS

LEASING OFFICE

973.298.1255

WestMillGardensNJ.com

115 Old Short Hills Road
West Orange, NJ 07052



WEST MILL GARDENS

SPACIOUS HOMES | CONVENIENT LOCATION

Welcome to West Mill Gardens, an exceptional rental community in West Orange, NJ. Our 635 garden-style apartments and townhomes offer 1-, 2-, and 3-bedroom layouts ranging from 775 to 1,190 square feet. Each residence features spacious interiors, semi-private entrances, air conditioning, and eat-in kitchens, with select homes boasting stainless steel appliances. Enjoy community amenities like a swimming pool, tennis courts, playground, and onsite laundry. With 24-hour emergency maintenance, ample parking, and proximity to Routes 280, 287, and the Garden State Parkway, convenience is paramount. We are also ideally located across from Cooperman Barnabas Medical Center. Schedule a tour today.

West Mill Gardens offers a stunning selection of spacious one-, two-, and three-bedroom rental residences. Find the perfect floor plan to fit your lifestyle.



All renderings, amenities, existing or future views and photos depicted or otherwise described herein are proposed and conceptual only, and are based upon preliminary development plans, which are subject to withdrawal, revisions, and other changes, without notice. Please inquire within for more details.

7.19.24

West Mill Gardens

Bedrooms	Name	Baths	Area	Pricing
1	The Astor	1	755 sq. ft.	\$1,920 - \$2,120
1	The Belvedere	1	790 sq. ft.	\$2,170 - \$2,270
2	The Devonshire	1	1,120 sq. ft.	\$2,745 - \$2,770
2	The Chelsea	1.5	1,120 sq. ft.	\$2,770 - \$2,970
3	The Excelsior-TownHome	1.5	1,190 sq. ft.	\$3,410

*All prices are subject to change.

Apartment Amenities

- Air Conditioning
- Eat-In Kitchen
- Garages Available

Community Amenities

- 24-Hour Emergency Maintenance
- Laundry Facilities
- Security Lighting
- Verizon FIOS Available
- Cable Ready
- Playground
- Swimming Pool
- Easy Access To NYC Transportation
- Public Transit Nearby
- Tennis Court(s)

Appliances

- Dishwasher
- Refrigerator/Freezer
- Oven/Range
- Range Hood

Visit our Website - www.WestMillGardensNJ.com

Rental Office Hours

Monday 9-5	Tuesday 9-5	Wednesday 9-5	Thursday 9-5	Friday 9-5	Saturday 9-4	Sunday 10-4
---------------	----------------	------------------	-----------------	---------------	-----------------	----------------

When you decide to rent with Garden Communities, the following items will be required when you submit your application:

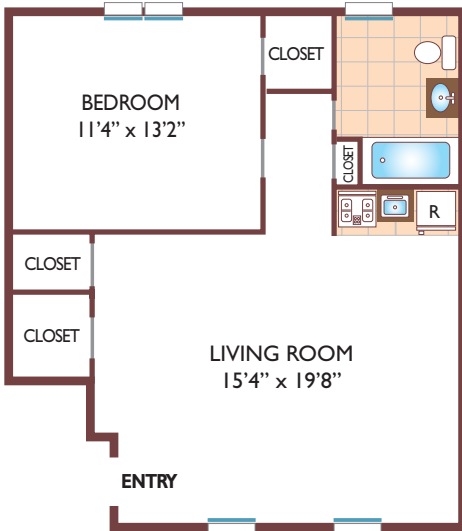
- Non-refundable online application processing Fee. \$85 per applicant
- An online deposit of \$200 in order to reserve an apartment. This amount will be applied to your first month's rent upon approval and ONLY refunded if your application is declined.
- A valid photo ID and social security card.

We are an equal opportunity provider. We do not discriminate on the basis of race, color, sex, national origin, religion, handicap or familial status.

West Mill Gardens

One Bedroom Floor Plan

The Astor - Ground Level Unit
with 1 Bath, 755 sq. ft.



One Bedroom Floor Plan

The Belvedere - Ground Level Unit
with 1 Bath, 790 sq. ft.



Two Bedroom Floor Plan

The Devonshire - Ground Level Unit
with 1 Bath, 1120 sq. ft.



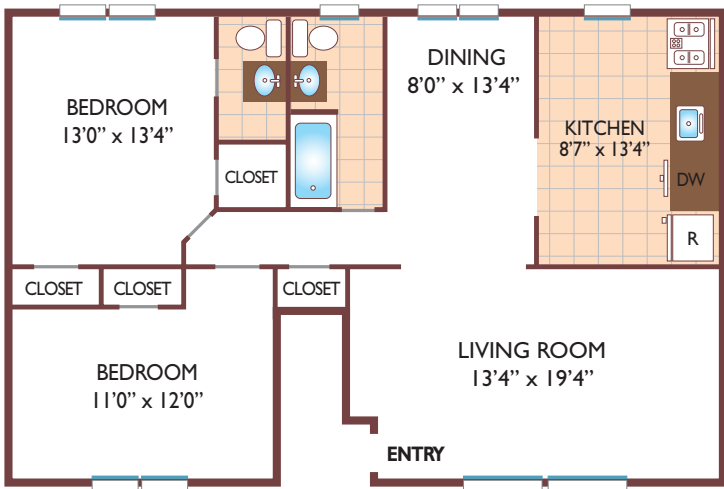
All dimensions, positions, locations and details are approximate.

All rent prices and community information subject to change.

West Mill Gardens

Two Bedroom Floor Plan

The Chelsea - Ground Level Unit
with 1 & 1/2 Baths, 1120 sq. ft.



Three Bedroom Floor Plan

The Excelsior - TownHome
with 1 & 1/2 Baths, 1190 sq. ft.



Second Floor



First Floor

All dimensions, positions, locations and details are approximate.

All rent prices and community information subject to change.

