

WOODCREST AT FAIRFIELD

LEASING OFFICE

973.947.8873

WoodcrestAtFairfieldNJ.com

29 Greenbrook Road
Fairfield, NJ 07004



WOODCREST AT FAIRFIELD - 55+

SPACIOUS HOMES | CONVENIENT LOCATION

Discover the exceptional lifestyle at Woodcrest at Fairfield, a vibrant 55+ community nestled in the heart of Fairfield, NJ. This community features 122 beautifully designed rental residences with a variety of one- and two-bedroom layouts ranging from 880 to 1,425 square feet. Each home includes wall-to-wall carpeting, a kitchen island, resident-controlled central air and heat, and a private patio or balcony. Residents enjoy a resort-inspired lifestyle with access to a clubhouse that offers a community room and fitness center. This wheelchair-accessible community ensures convenience and security with 24-hour emergency maintenance, controlled access at building entry, and easy access to public transportation. Embrace the perfect blend of comfort and convenience at Woodcrest at Fairfield.

Woodcrest at Fairfield offers a stunning selection of spacious one- and two-bedroom rental residences. Find the perfect floor plan to fit your lifestyle.



All renderings, amenities, existing or future views and photos depicted or otherwise described herein are proposed and conceptual only, and are based upon preliminary development plans, which are subject to withdrawal, revisions, and other changes, without notice. Please inquire within for more details.

6.27.24

Woodcrest At Fairfield- 55+

Bedrooms	Name	Baths	Area	Pricing
1	Birch	1	880 sq. ft.	\$2,560
1	Aspen	1	950 sq. ft.	\$2,460 - \$2,610
2	Elm	2	1,240 sq. ft.	\$3,280 - \$3,395
2	Cedar	2	1,425 sq. ft.	\$3,355 - \$3,505
2	Dogwood	2	1,270 sq. ft.	\$3,430

*All prices are subject to change.

Apartment Amenities

- Kitchen Island
- Private Patio or Balcony
- Washer/Dryer in Every Home
- Luxury Vinyl Plank Flooring (Select Apartments)
- Resident Controlled Central Air & Heat
- Plush Wall-To-Wall Carpet
- Underground Assigned Parking

Community Amenities

- 24-Hour Emergency Maintenance
- Controlled Access at Building Entry
- Security Lighting
- Cable Ready
- Fitness Center
- Shuttle Service for Shopping and Dining
- Clubhouse
- Public Transit Nearby
- Verizon FIOS Available

Appliances

- Dishwasher
- Range Hood
- Microwave
- Refrigerator/Freezer
- Oven/Range

Visit our Website - www.WoodcrestatFairfieldNJ.com

Rental Office Hours

Monday 8:30 - 4	Tuesday 8:30 - 4	Wednesday 8:30 - 4	Thursday 8:30 - 4	Friday 8:30 - 4	Saturday Closed	Sunday Closed
--------------------	---------------------	-----------------------	----------------------	--------------------	--------------------	------------------

When you decide to rent with Garden Communities, the following items will be required when you submit your application:

- Non-refundable online application processing Fee. \$75 per applicant
- An online deposit of \$500 in order to reserve an apartment. This amount will be applied to your first month's rent upon approval and ONLY refunded if your application is declined.
- A valid photo ID, social security card and two current pay stubs.

We are an equal opportunity provider. We do not discriminate on the basis of race, color, sex, national origin, religion, handicap or familial status.

Woodcrest at Fairfield

One Bedroom Floor Plan

The Birch
with 1 Bath, 880 sq. ft.



One Bedroom Floor Plan

The Aspen
with 1 Bath, 950 sq. ft.



Two Bedroom Floor Plan

The Elm
with 2 Baths, 1240 sq. ft.



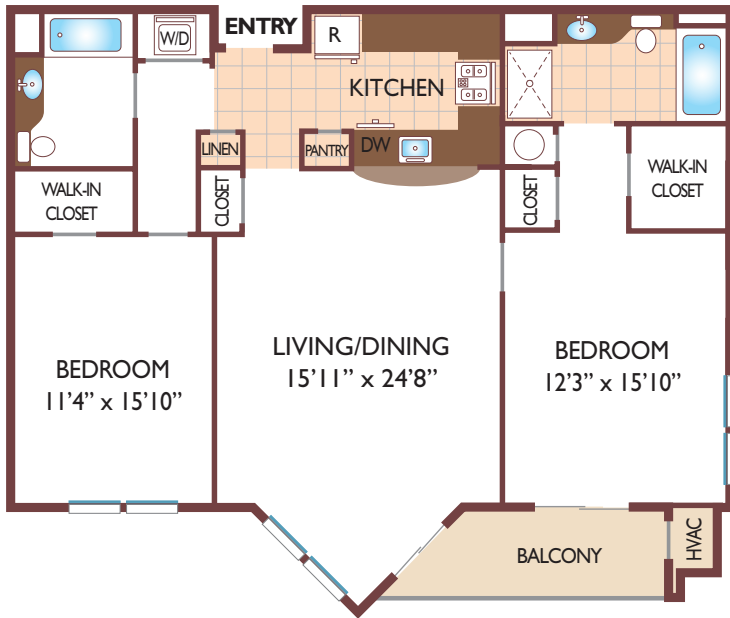
All dimensions, positions, locations and details are approximate.
All rent prices and community information subject to change.



Woodcrest at Fairfield

Two Bedroom Floor Plan

The Dogwood
with 2 Bath, 1270 sq. ft.



Two Bedroom Floor Plan

The Cedar
with 2 Bath, 1425 sq. ft.



All dimensions, positions, locations and details are approximate.

All rent prices and community information subject to change.

