

# WOODCREST AT CLARK

## LEASING OFFICE

732.860.5430  
WoodcrestAtClarkNJ.com

1500 Westfield Avenue  
Clark, NJ 07066



# WOODCREST AT CLARK

## SPACIOUS HOMES | CONVENIENT LOCATION

Experience comfort and convenience at Woodcrest at Clark, Union County's premier 55+ rental community. Nestled beside Union County Parkland, our spacious one- and two-bedroom residences offer a tranquil setting. Enjoy upscale features like granite countertops, stainless steel appliances, and luxurious soaking tubs. Each residence also features an in-suite washer and dryer and a private balcony. Dive into community amenities including a clubhouse with a card room, TV room, and fitness center. With easy access to transportation and entertainment options, residents can take advantage of a vibrant and elevated lifestyle.

Woodcrest at Clark offers a stunning selection of spacious one- and two-bedroom rental residences. Find the perfect floor plan to fit your lifestyle.



All renderings, amenities, existing or future views and photos depicted or otherwise described herein are proposed and conceptual only, and are based upon preliminary development plans, which are subject to withdrawal, revisions, and other changes, without notice. Please inquire within for more details.

7.8.24

# Woodcrest at Clark - 55+

Bedrooms	Name	Baths	Area	Pricing
1	1A2	1	830-1,050 sq. ft.	\$3,120
1	1D2 - with Den	1	1,000-1,270 sq. ft.	\$3,170 - \$3,270
2	2A2	2	1,340 sq. ft.	\$3,200 - \$3,450
2	2B1	1	935 sq. ft.	\$3,030
2	2E2 - End Layout	2	1,380-1,460 sq. ft.	\$3,700
2	2F1	2	1,695 sq. ft.	\$3,950
2	2D1 - Corner	2	1,630 sq. ft.	\$3,950

\*All prices are subject to change.

## Apartment Amenities

- Carpeted Bedrooms
- Private Patio or Balcony
- Granite Kitchen Countertops
- Voluminous 9' High Ceilings
- Large Soaking Tub

## Community Amenities

- 24-Hour Emergency Maintenance
- Clubhouse
- TV Lounge
- Cable Ready
- Community Room
- Verizon FIOS Available
- Card Room
- Covered Parking

## Appliances

- Dishwasher
- Refrigerator/Freezer
- Microwave
- Oven/Range

**Visit our Website - [www.WoodcrestAtClarkNJ.com](http://www.WoodcrestAtClarkNJ.com)**

## Rental Office Hours

Monday 8:30-4:30	Tuesday 8:30-4:30	Wednesday 8:30-4:30	Thursday 8:30-4:30	Friday 8:30-4:30	Saturday Closed	Sunday Closed
---------------------	----------------------	------------------------	-----------------------	---------------------	--------------------	------------------

When you decide to rent with Garden Communities, the following items will be required when you submit your application:

- Non-refundable online application processing Fee. \$85 per applicant
- An online deposit of \$500 in order to reserve an apartment. This amount will be applied to your first month's rent upon approval and ONLY refunded if your application is declined.
- A valid photo ID and social security card.

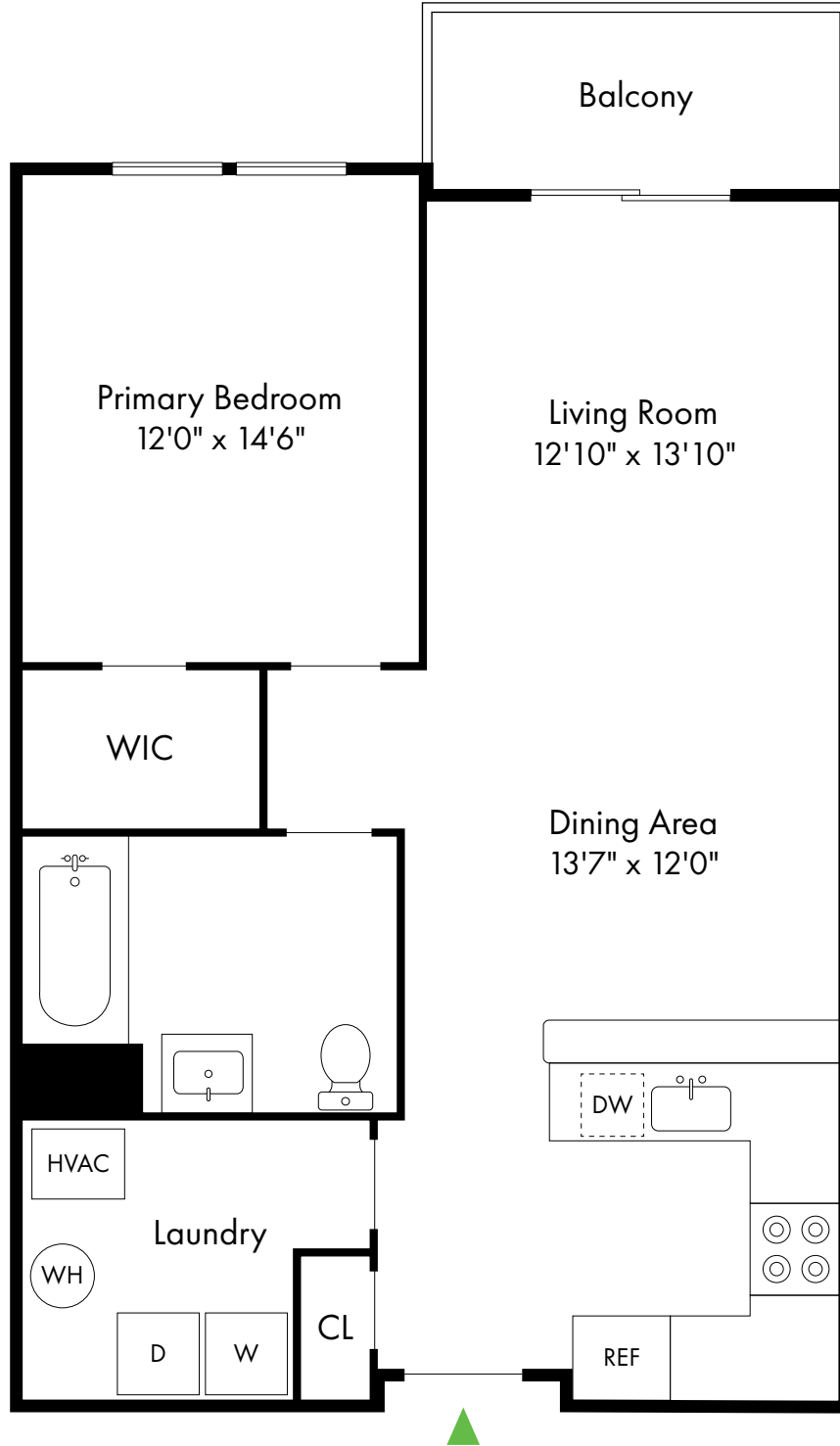
We are an equal opportunity provider. We do not discriminate on the basis of race, color, sex, national origin, religion, handicap or familial status.

# Woodcrest at Clark

1A2

Clark, NJ

1 Bed, 1 Bath | 830 - 1,050 SF



732.340.0069

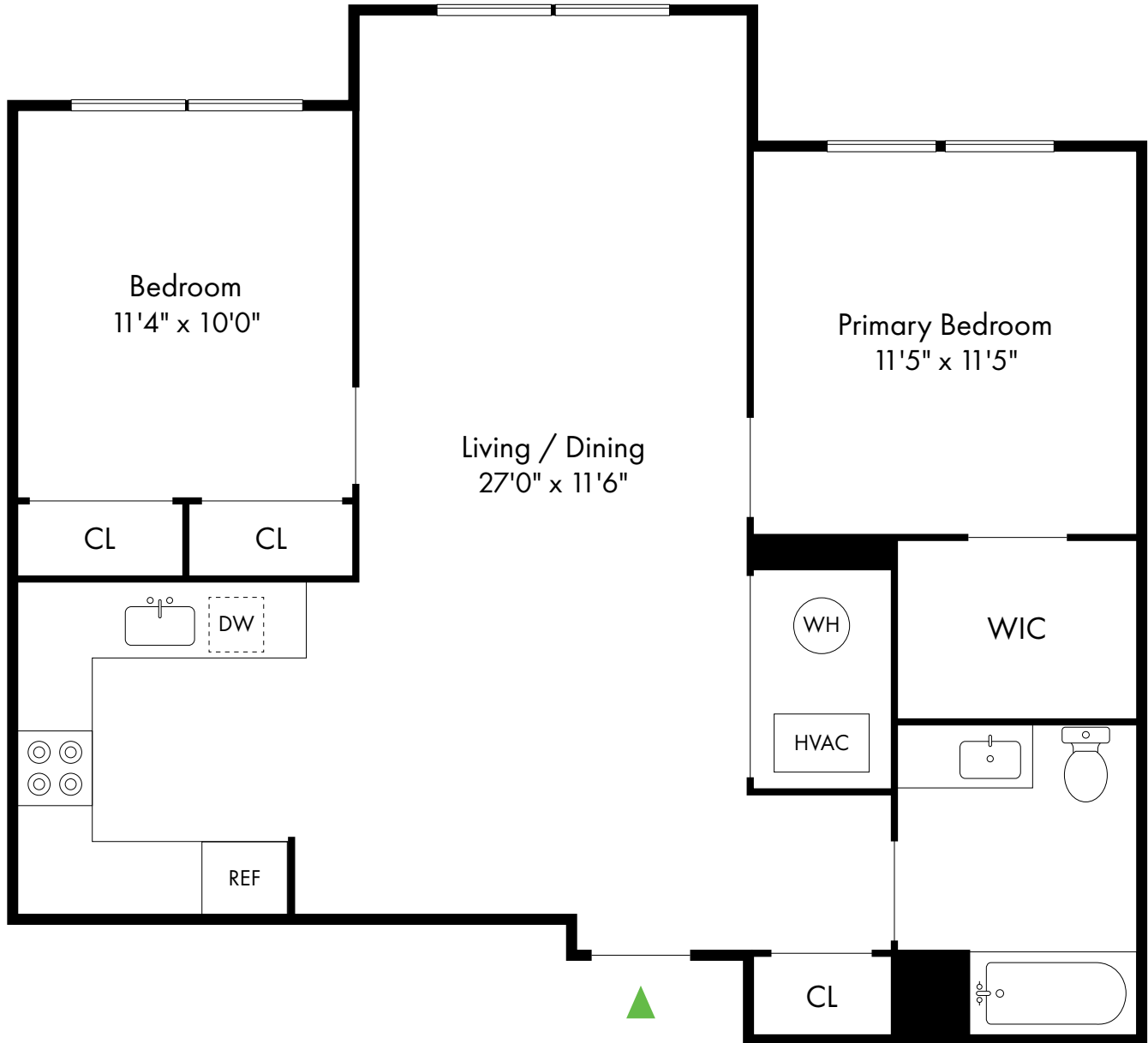
[www.WoodcrestAtClarkNJ.com](http://www.WoodcrestAtClarkNJ.com)

# Woodcrest at Clark

2B1

Clark, NJ

2 Bed, 1 Bath | 935 SF



732.340.0069

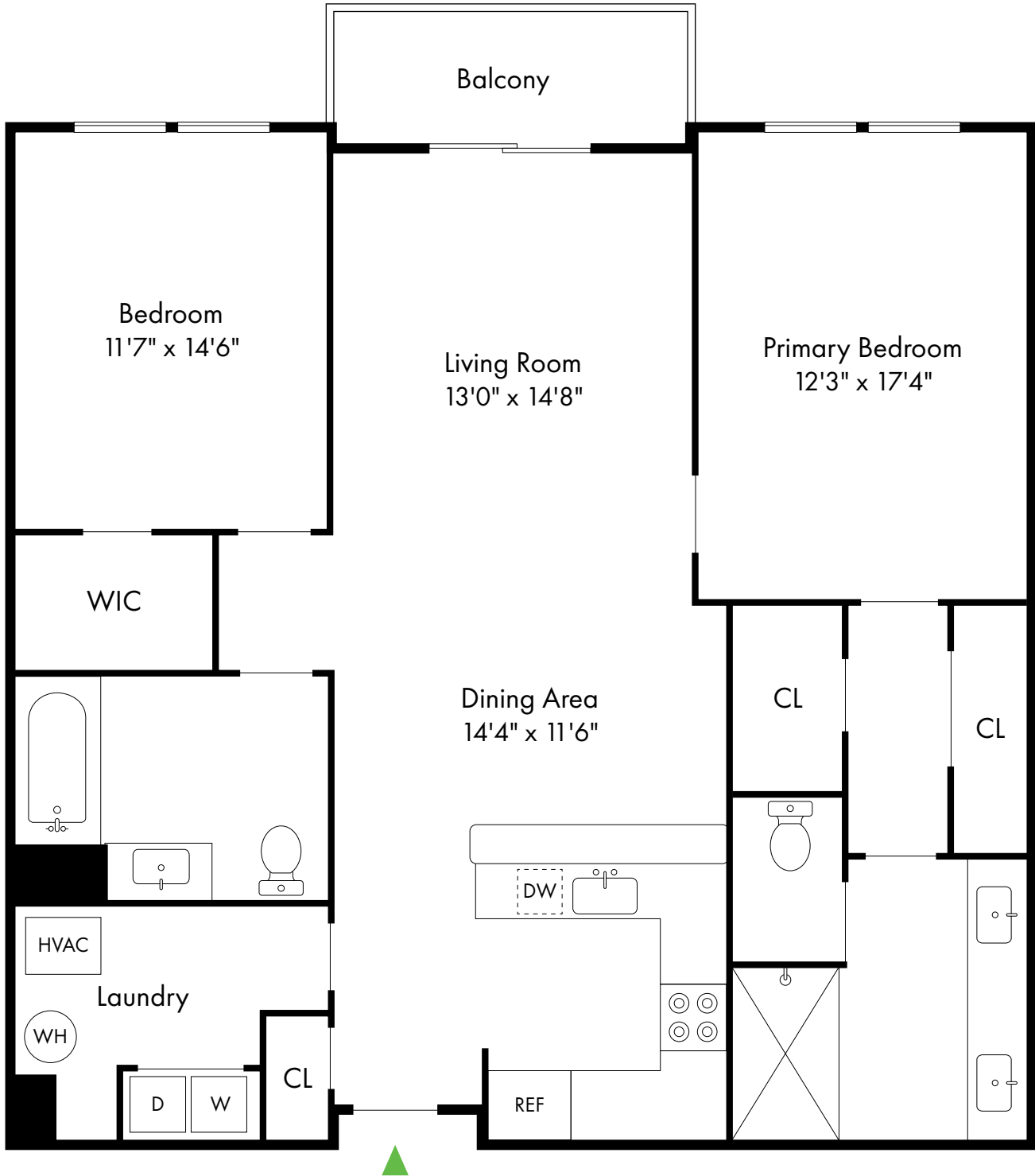
[www.WoodcrestAtClarkNJ.com](http://www.WoodcrestAtClarkNJ.com)

# Woodcrest at Clark

2A2

Clark, NJ

2 Bed, 2 Bath | 1,340 SF



732.340.0069

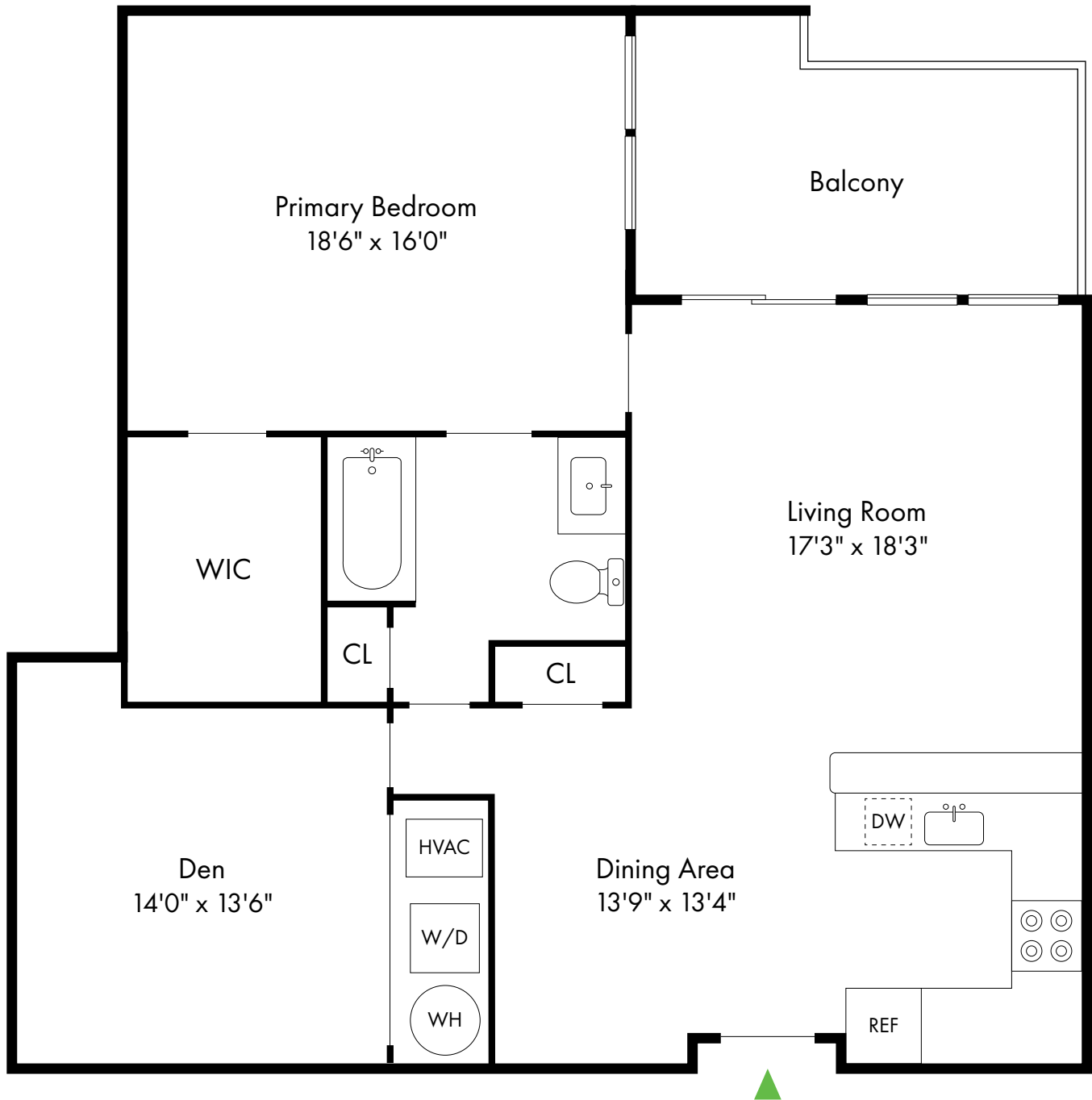
[www.WoodcrestAtClarkNJ.com](http://www.WoodcrestAtClarkNJ.com)

# Woodcrest at Clark

Clark, NJ

1D2 - with Den

1 Bed, 1 Bath | 1,270 SF



732.340.0069

[www.WoodcrestAtClarkNJ.com](http://www.WoodcrestAtClarkNJ.com)

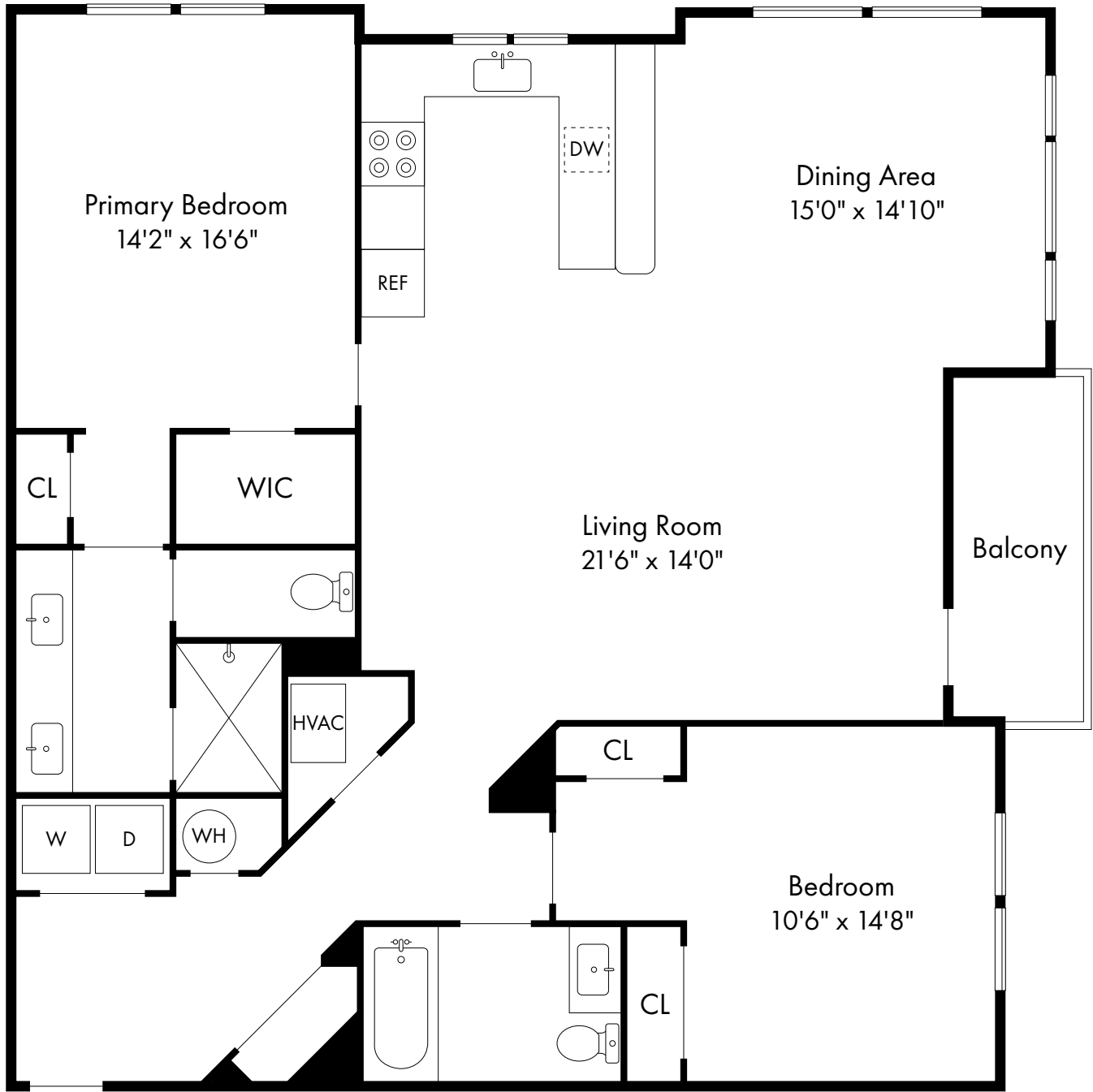


# Woodcrest at Clark

2F1

Clark, NJ

2 Bed, 2 Bath | 1,695 SF



732.340.0069

[www.WoodcrestAtClarkNJ.com](http://www.WoodcrestAtClarkNJ.com)



# Woodcrest at Clark

Clark, NJ

2D1 - Corner

2 Bed, 2 Bath | 1,630 SF

